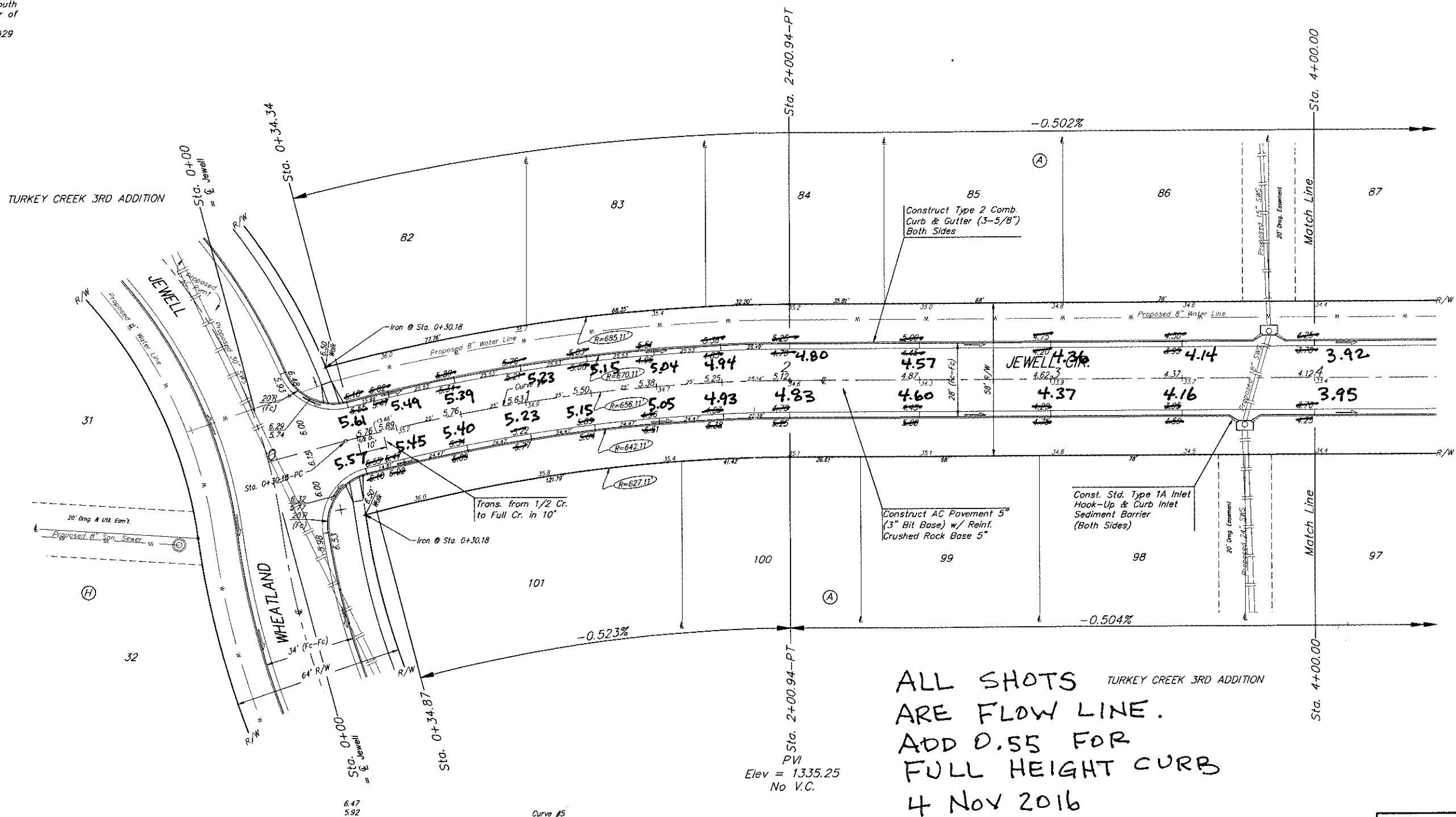
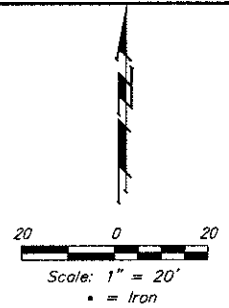


**BENCHMARKS.**  
 BM #1: "□" Cut in top of curb, north of NW corner of Lot 44, Block H, Turkey Creek 3rd Addition. Elev. = 1333.17 NGVD29  
 BM #2: "□" Cut in top of curb, south end of south curb return SW corner of Grant & Wheatland. Elev. = 1335.13 NGVD29



ALL SHOTS TURKEY CREEK 3RD ADDITION  
 ARE FLOW LINE.  
 ADD 0.55 FOR  
 FULL HEIGHT CURB  
 4 Nov 2016  
 Ron Coonce

Curve #5  
 Curve Data Based on Centerline  
 Rad. = 656.11' Delta = 145°44' Tangent = 85.87'  
 Arc = 170.76' L.C. = 170.28' Def./Pt. = 2.61986 Min.

Station	Arc	Face Chord Lengths		Defl.	Total Defl.
		8' Left	8' Right		
0+30.18	-	-	-	0°00'00"	0°00'00"
0+50.00	19.82'	20.48'	19.16'	0°51'56"	0°51'56"
0+75.00	25.00'	25.84'	24.16'	1°05'29"	1°57'25"
1+00.00	25.00'	25.84'	24.16'	1°05'30"	3°02'55"
1+25.00	25.00'	25.84'	24.16'	1°05'30"	4°08'25"
1+50.00	25.00'	25.84'	24.16'	1°05'30"	5°13'55"
1+75.00	25.00'	25.84'	24.16'	1°05'29"	6°19'24"
2+00.94	25.94'	26.81'	25.07'	1°07'58"	7°27'22"



**Baughman** Turkey Creek 3rd Addition - Phase 3A  
**JEWELL CIR.**  
 Sta. 0+34.34 to Sta. 4+00.00

Reigelman Company, P.A. 315 E. 5th St., Wichita, KS 67211 P 316-262-7771 F 316-262-5049  
 ENGINEERING | SURVEYING | PLANNING | LANDSCAPE ARCHITECTURE

PROJECT NUMBER 47284488	DESIGN AEG	DRAWN JAK
REVISIONS	APPROVED	DATE 1/25/16
SCALE Noted		SHEET <b>11 OF 38</b>

E:\Projects\Turkey Creek 3rd\Engineering\Phase 3A\Sta\_150524915v-Plan.dwg

Roll type curb & gutter to be constructed on the pavement on this sheet.  
 Top of curb elevation are given for full height curb.