

BENCHMARKS:

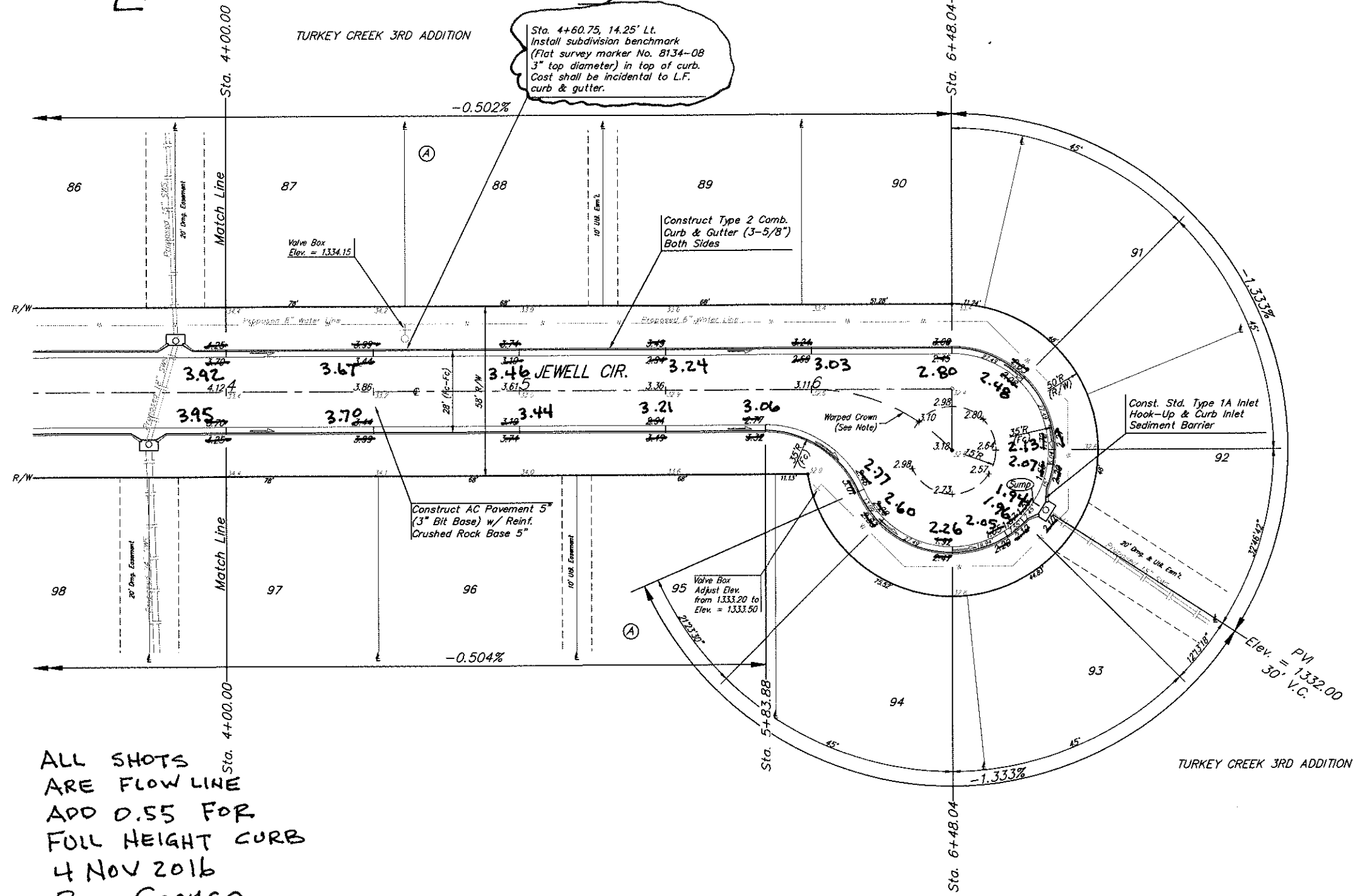
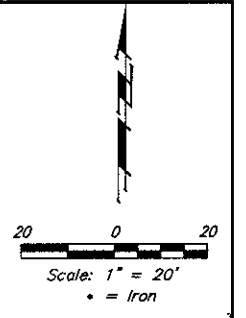
BM #1: "□" Cut in top of curb, north of NW corner of Lot 44, Block H, Turkey Creek 3rd Addition.
Elev. = 1333.17 NGVD29

BM #2: "□" Cut in top of curb, south end of south curb return SW corner of Grant & Wheatland.
Elev. = 1333.13 NGVD29

[SUB-DIVISION BRASS BM DISK]
1333.85 NGVD 29

Sta. 4+60.75, 14.25' Lt.
Install subdivision benchmark
(Flat survey marker No. 8134-08
3" top diameter) in top of curb.
Cost shall be incidental to L.F.
curb & gutter.

PVI
Elev. = 1333.00
No V.C.



ALL SHOTS
ARE FLOW LINE
ADD 0.55 FOR
FULL HEIGHT CURB
4 NOV 2016
Ron Coonce

NOTE: Warp Crown to Conform to the Approx. Center of Proposed Pavement.

SUBDIVISION BENCH MARKS

Street & Station	Location Description	Elevation
Wheatland 4+03.03, 17.25' Lt.	Adjacent to Fire Hydrant at East end of South Return Wheatland and Wheatland Ct.	1335.54
Jewell Cir. 4+60.75, 14.25' Lt.	Adjacent to Fire Hydrant at SE Corner of Lot 87, Block A.	1333.87



Roll type curb & gutter to be constructed on the pavement on this sheet.
Top of curb elevation are given for full height curb.

		Turkey Creek 3rd Addition - Phase 3A JEWELL CIR. Sta. 4+00.00 to Sta. 6+48.04	
Baughman Company, P.A. 315 23rd St. Walnut, KS 67311 P 316-262-7271 F 316-262-0149 ENGINEERING SURVEYING PLANNING LANDSCAPE ARCHITECTURE			
PROJECT NUMBER 472-84488	DESIGN AEG	DRAWN JAK	DATE 1/25/16
REVISIONS:	APPROVED	SCALE Noted	SHEET 12 OF 38