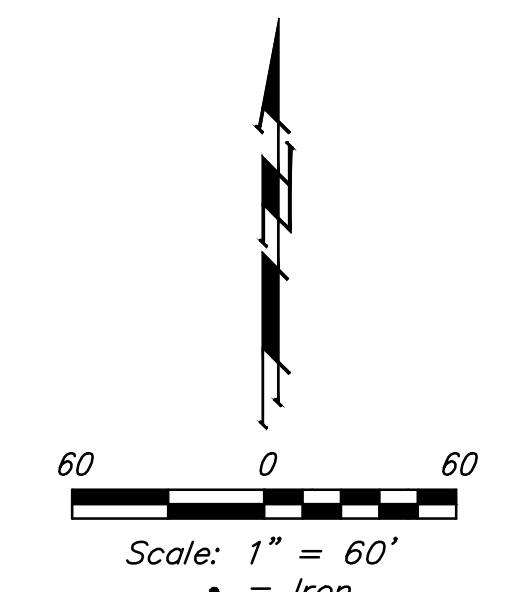
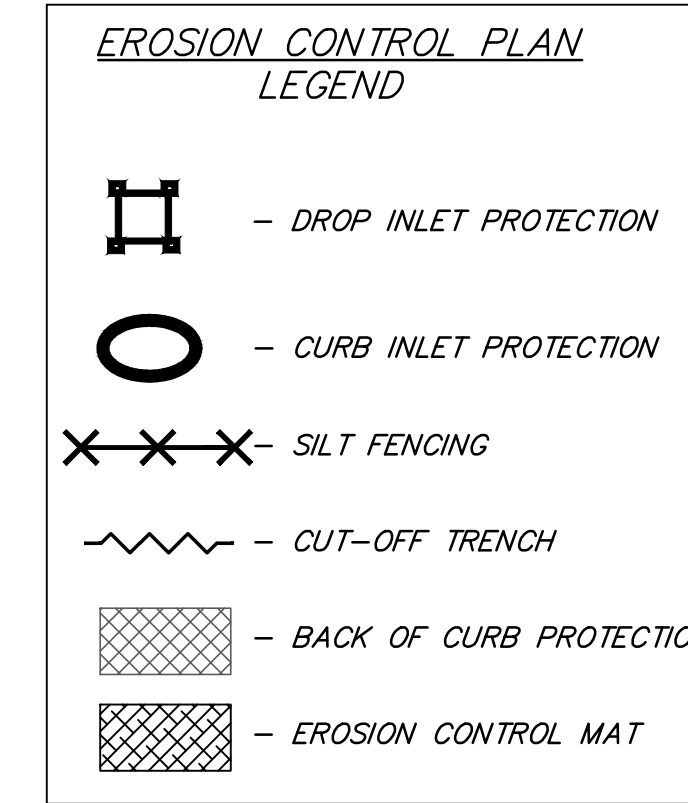
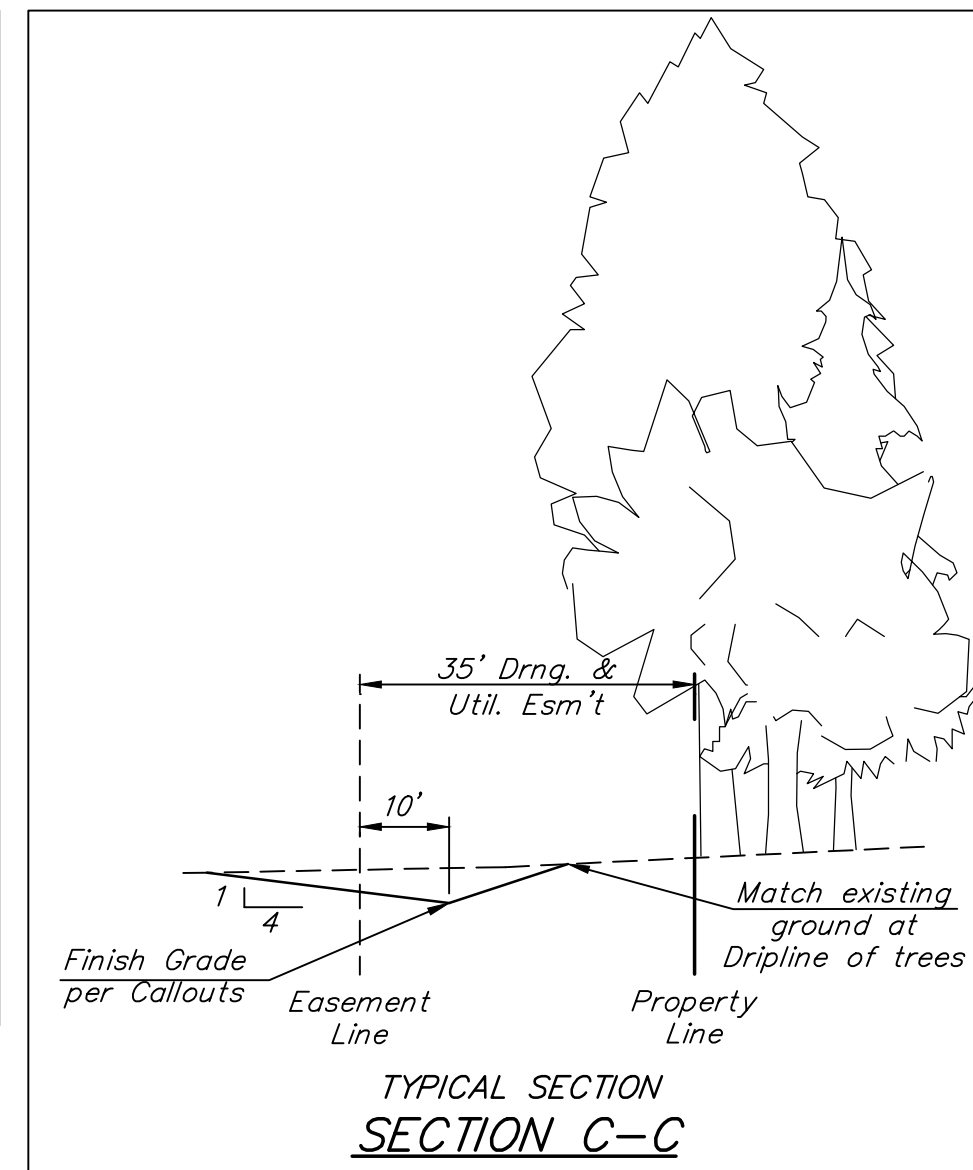
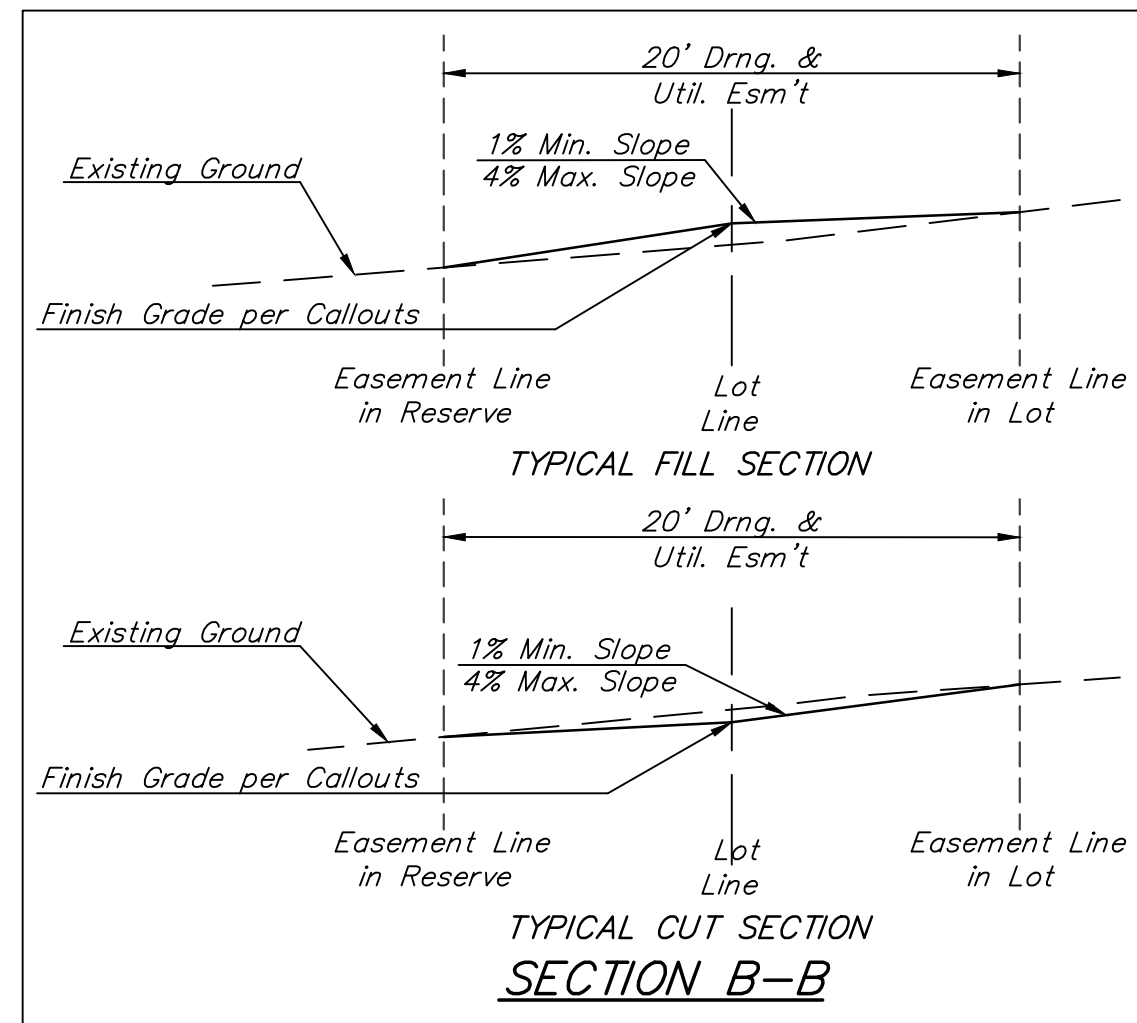
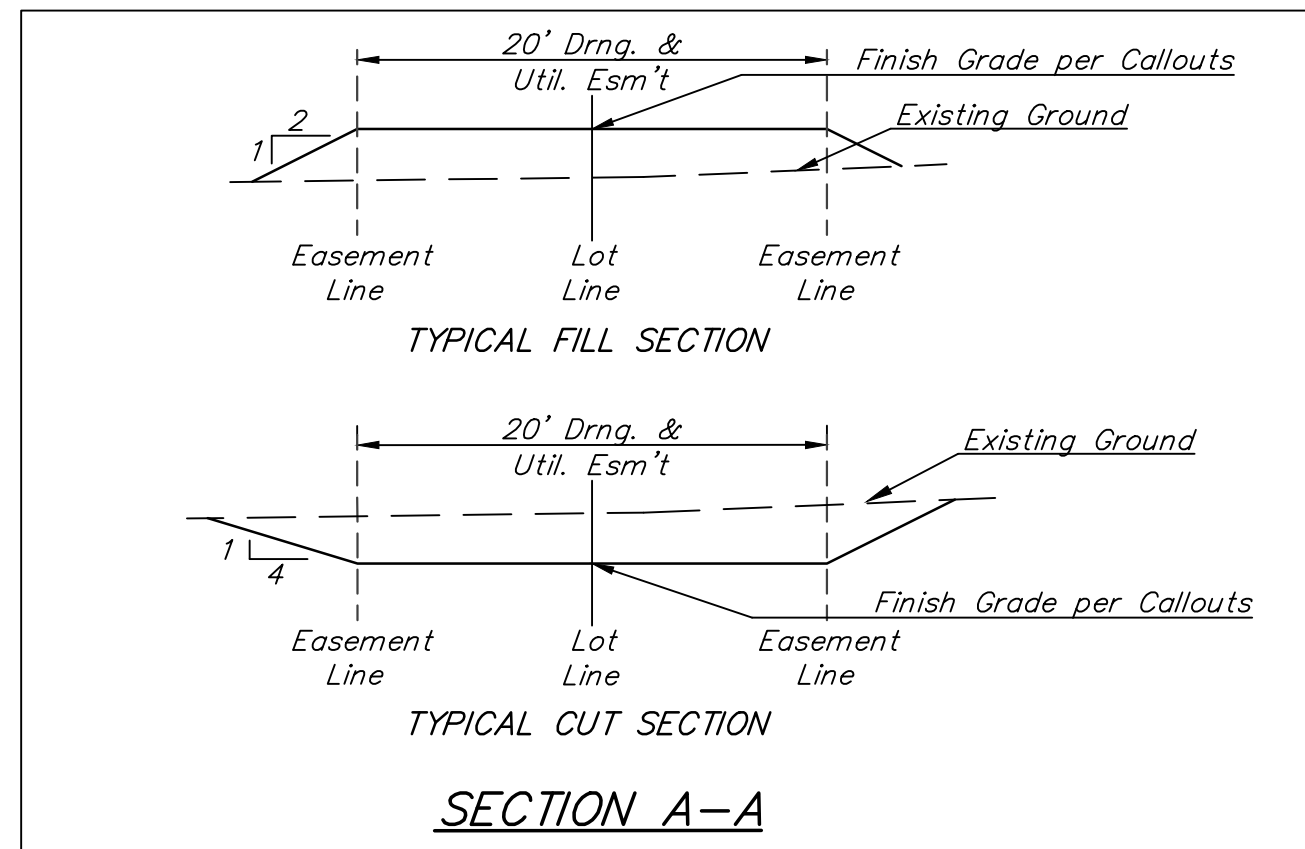


**BENCHMARKS:**

BM #1: "□" Cut in top of curb, north of NW corner of Lot 44, Block H, Turkey Creek 3rd Addition. Elev. = 1333.17 NAVD29

BM #2: "□" Cut in top of curb, south end of south curb return SW corner of Grant & Wheatland. Elev. = 1335.13 NAVD29



**NOTE: 6' WIDE BACK OF CURB PROTECTION TO BE USED ON THIS PROJECT**

= Easements To Be Graded

Approximate Easement Grading Quantities:  
 (For Information Only)  
 Excavation: 169 C.Y.  
 Fill: 395 C.Y.

The Contractor shall grade the easements as shown to the elevations given on the easement grading plan.

The Contractor shall 'straight' grade the easements between the elevations given. Where a callout designates 'Match', the Contractor will grade to the existing ground elevation.

Excess excavation from easement grading and from sanitary sewer construction shall be placed on the lots as indicated to the elevations shown.

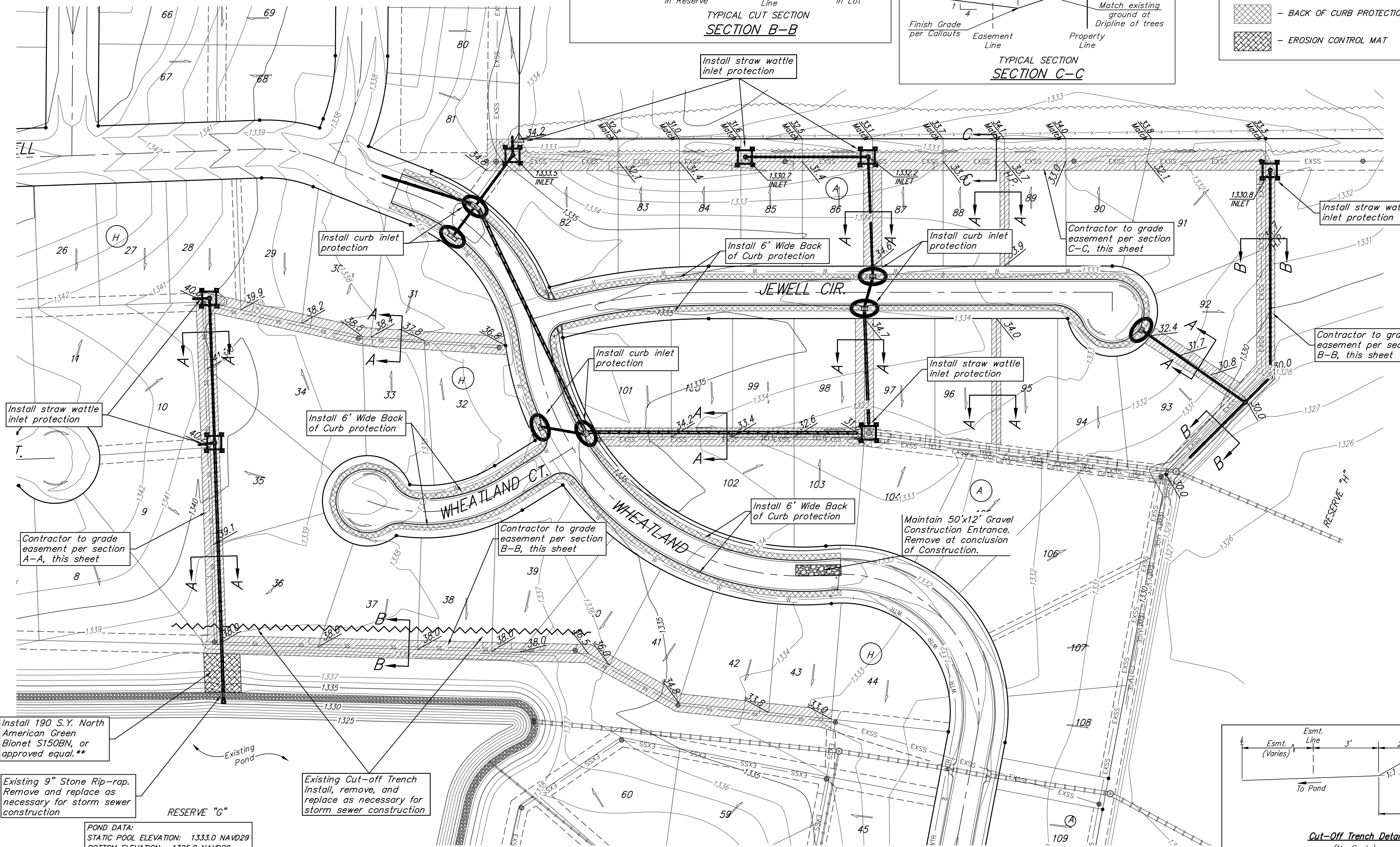
All cost to be included in the Lump Sum bid item "Easement Grading"

**NOTES:**  
 Contractor shall make sure all erosion control is in place before project is accepted. This plan represents the minimum standard. Any additional erosion control measures shall be installed by the Contractor as needed.

All areas disturbed during construction shall be seeded at 300 lbs./acre with Rye Grass immediately following construction in that area. Contractor shall prepare ground per City Specifications.

EROSION CONTROL MEASURE	INSTALL	MAINTAIN
BACK OF CURB PROTECTION (LF)	3,315	
CUT-OFF TRENCH (LF)		480
CONSTRUCTION ENTRANCE (EA)		1
CURB INLET BARRIER (EA)	7	
DROP INLET PROTECTION (EA)	7	
EROSION CONTROL MAT (SY)	190	
MAINTAIN EROSION CONTROL BMP's (LS)	1	

\* ALL EXISTING BMP's INCLUDING CONSTRUCTION ENTRANCE, SEDIMENT BARRIERS, SILT FENCE, CUT-OFF TRENCH, AND EROSION CONTROL MAT SHALL BE MAINTAINED AND REPAIRED IF NECESSARY.



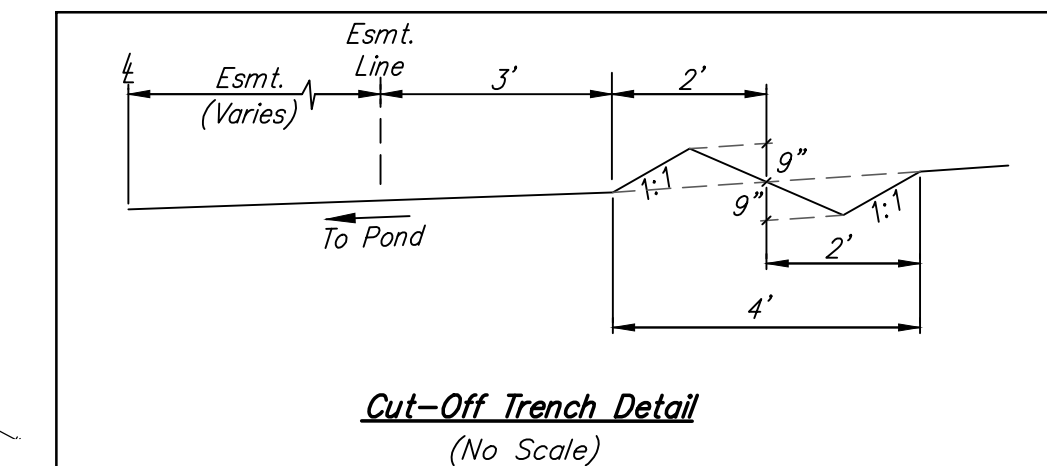
Install 190 S.Y. North American Green Bionet S150BN, or approved equal.\*\*

Existing 9" Stone Rip-rap. Remove and replace as necessary for storm sewer construction

Existing Cut-off Trench. Install, remove, and replace as necessary for storm sewer construction

**POND DATA:**  
 STATIC POOL ELEVATION: 1333.0 NAVD29  
 BOTTOM ELEVATION: 1325.0 NAVD29  
 100 YEAR DWS: 1337.8 NAVD29

**\*\*NOTE: ONLY BIODEGRADABLE EROSION CONTROL MAT SHALL BE USED ON THIS PROJECT**



**Baughman** Turkey Creek 3rd Addition - Phase 3A  
**EROSION CONTROL / EASEMENT GRADING**  
 Street / SWS Improvements

Baughman Company, P.A. 315 Ellis St. Wichita, KS 67211 P 316-262-7271 F 316-262-0149  
 ENGINEERING | SURVEYING | PLANNING | LANDSCAPE ARCHITECTURE

PROJECT NUMBER: 472-84488 DESIGN: AEG DRAWN: JAK  
 APPROVED: DATE: 1/25/16  
 REVISIONS: SCALE: Noted SHEET: 21 OF 38

E:\Projects\Turkey Creek 3rd\Engineering\Phase 3A\Str\_1505E149\Str Plans.dwg