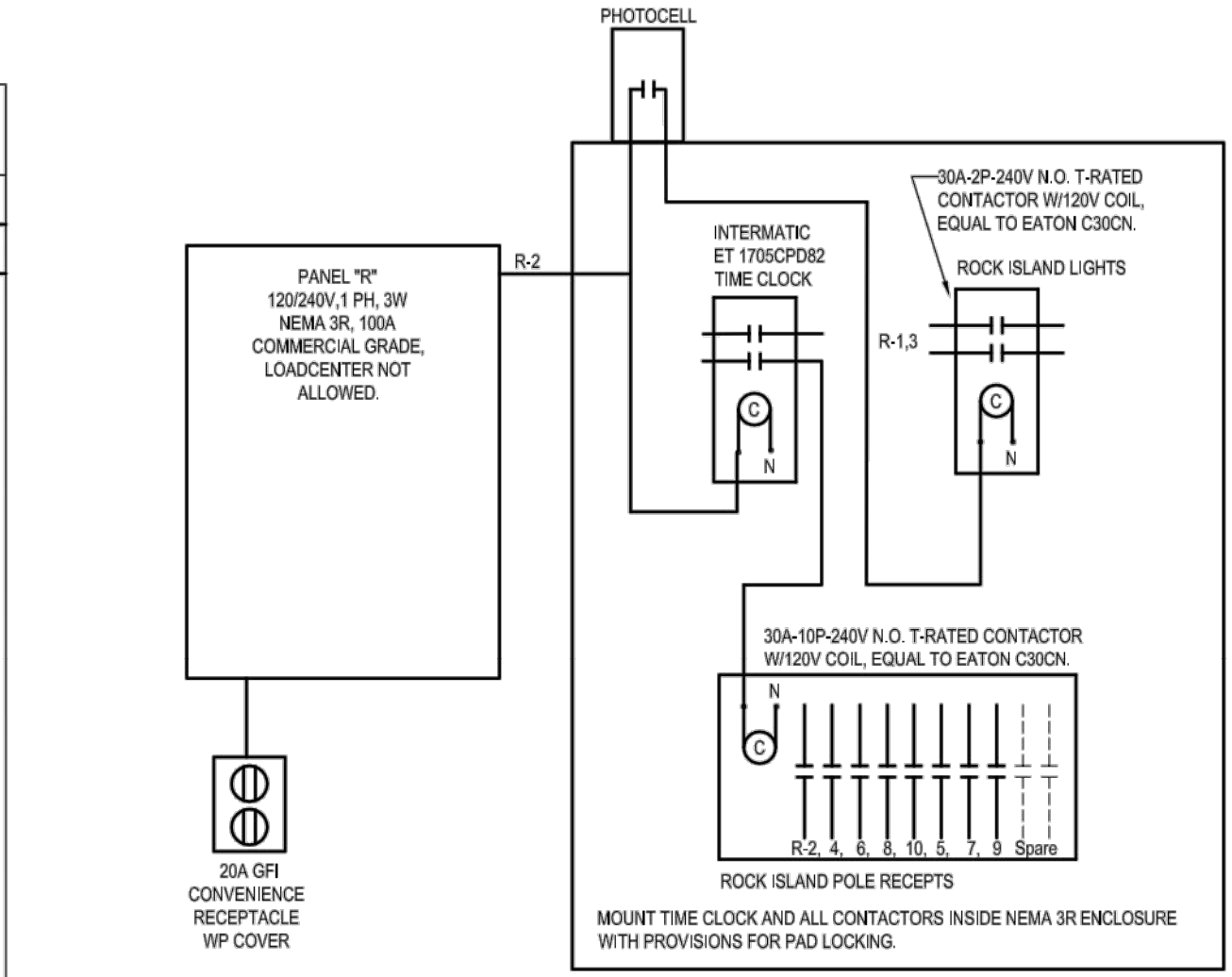
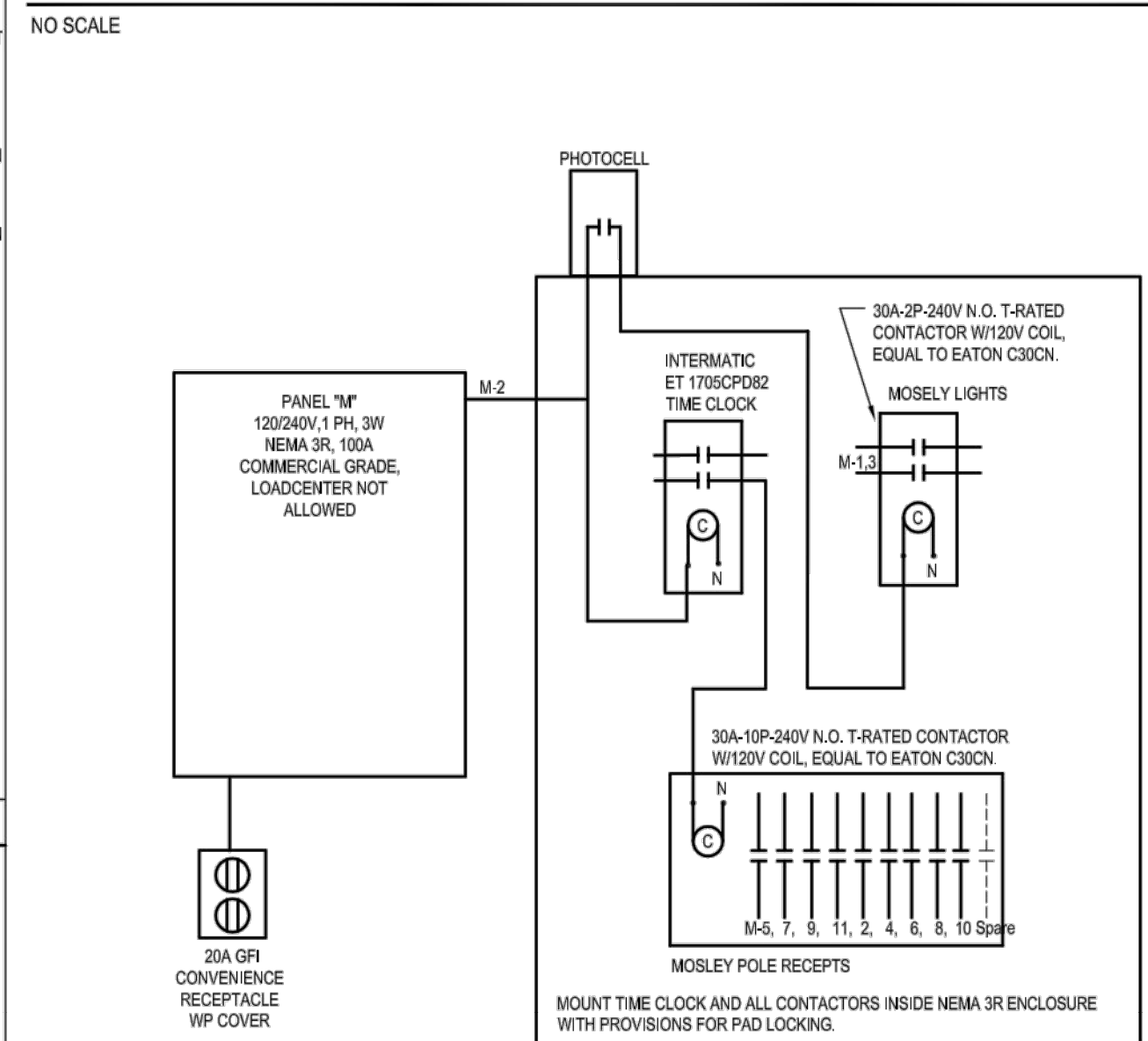


ELECTRICAL SYMBOL LIST (NOTE: NOT ALL SYMBOLS SHOWN ARE USED ON THESE DRAWINGS)						
ABBREVIATIONS		POWER		LIGHTING (REFER TO LIGHT FIXTURE SCHEDULE)		
SYMBOL	DESCRIPTION	SYMBOL	DESCRIPTION	SYMBOL	DESCRIPTION	
AFF	ABOVE FINISHED FLOOR	[Symbol]	20A-125V GFCI GROUNDED RECEPTACLE	[Symbol]	2x4' FLUORESCENT LIGHT & FIXTURE LETTER (ACRYLIC)	
AFG	ABOVE FINISHED GRADE	[Symbol]	20A-125V DUPLEX GROUNDED RECEPTACLE	[Symbol]	2x4' FLUORESCENT LIGHT & FIXTURE LETTER (INDIRECT / PERF)	
AC	AMPS INTERRUPTING CAPACITY	[Symbol]	20A-125V 4-POLE GROUNDED RECEPTACLE	[Symbol]	2x2' FLUORESCENT LIGHT & FIXTURE LETTER (INDIRECT / PERF)	
A	AMPS	[Symbol]	SPECIAL OUTLET, SEE SCHEDULE OR AS NOTED	[Symbol]	2x4' FLUORESCENT LIGHT & FIXTURE LETTER (INDIRECT / LOUVER)	
C	CONDUIT	[Symbol]	BUSS BSSY BOX COVER UNIT & FUSISTAT - MOUNT ON HOUSING OF EQUIPMENT SERVED, PROVIDE FUSE SIZED AT 125% OF MOTOR FLA OR PER MANUFACTURERS RECOMMENDATION	[Symbol]	2x4' FLUORESCENT LIGHT & FIXTURE LETTER (DIRECT / LENS)	
CB	CIRCUIT BREAKER	[Symbol]	2-POLE MOTOR CONTROL SWITCH (HUBBELL #HBL78320)	[Symbol]	2x2' FLUORESCENT LIGHT & FIXTURE LETTER (DIRECT / LENS)	
CCTV	CLOSED CIRCUIT TELEVISION	[Symbol]	HEAVY DUTY SAFETY SWITCH (FUSE)	[Symbol]	2x4' EMERGENCY FLUORESCENT LIGHT & FIXTURE LETTER	
CKT	CIRCUIT	[Symbol]	HEAVY DUTY SAFETY SWITCH (NON FUSE)	[Symbol]	20'x4' FLUORESCENT HIGH BAY LIGHT & FIXTURE LETTER	
CLG	CEILING	[Symbol]	COMBINATION SOLID STATE STARTER/SAFETY SWITCH (FUSE)	[Symbol]	1'x4' FLUORESCENT LIGHT & FIXTURE LETTER (ACRYLIC)	
CT	MOUNTED ABOVE COUNTER TOP (ELEVATION MAY VARY)	[Symbol]	VARIABLE FREQUENCY DRIVE	[Symbol]	1'x4' FLUORESCENT WRAPAROUND LIGHT & FIXTURE LETTER	
CUH	CABINET UNIT HEATER	[Symbol]	ELECTRICAL DISTRIBUTION PANELBOARD	[Symbol]	LARGE SCALE PENDANT LIGHT & FIXTURE LETTER	
EF	EXHAUST FAN	[Symbol]	SURFACE MOUNTED ELECTRICAL PANELBOARD	[Symbol]	STAGGERED FLUORESCENT STRIP LIGHT & FIXTURE LETTER	
ELEC	ELECTRIC	[Symbol]	RECESSED MOUNTED ELECTRICAL PANELBOARD	[Symbol]	FLUORESCENT STRIP LIGHT & FIXTURE LETTER	
EM	EMERGENCY	[Symbol]	JUNCTION BOX	[Symbol]	ROUND FLUOR, LED OR HID DOWN LIGHT & FIXTURE LETTER	
EMS	ENERGY MANAGEMENT SYSTEM	[Symbol]	JUNCTION BOX	[Symbol]	UNDER CABINET LIGHT & FIXTURE LETTER	
EMT	ELECTRICAL METALLIC TUBING	[Symbol]	POLE POWER	[Symbol]	FLUOR, LED OR H.I.D. LIGHT & FIXTURE LETTER	
EWC	ELECTRIC WATER COOLER	[Symbol]	CIRCUIT BREAKER	[Symbol]	TRACK LIGHT & FIXTURE LETTER	
F	FUSE	[Symbol]	SPECIAL SYSTEM DEVICES		[Symbol]	WALL LIGHT & FIXTURE LETTER
FA	FIRE ALARM	[Symbol]	[Symbol]	TELEPHONE OUTLET (W-WALL, MOUNT AT 54" AFF)	[Symbol]	H.I.D. OR LED AREA LIGHT & FIXTURE LETTER
FAFP	FIRE ALARM ANNUNCIATOR PANEL	[Symbol]	[Symbol]	DATA NETWORK OUTLET (UP TO FOUR DATA CABLES)	[Symbol]	LED LANDSCAPE LIGHT & FIXTURE LETTER
FACP	FIRE ALARM CONTROL PANEL	[Symbol]	[Symbol]	COMBINATION DATA / TELEPHONE OUTLET (SAME BOX)	[Symbol]	H.I.D. OR LED BOLLARD LIGHT & FIXTURE LETTER
FCU	FAN COIL UNIT	[Symbol]	[Symbol]	DATA DROP (ONE DATA CABLE ONLY)	[Symbol]	BATTERY POWERED EMERGENCY LIGHT
FXT	FIXTURE	[Symbol]	[Symbol]	MICROPHONE OUTLET	[Symbol]	BATTERY POWERED EMERGENCY LIGHT
FLA	FULL LOAD AMPS	[Symbol]	[Symbol]	WIRELESS ACCESS POINT DROP (ONE DATA CABLE)	[Symbol]	BATTERY POWERED LED EMERGENCY & EXIT LIGHT
FLR	FLOOR	[Symbol]	[Symbol]	SMARTBOARD VIDEO DROP	[Symbol]	SWITCHES (1-POLE, 3-WAY, 4-WAY, PIVOT)
FLUOR	FLUORESCENT	[Symbol]	[Symbol]	CABLE TV OUTLET	[Symbol]	INDICATES SWITCHING SCHEME
FMC	FLEXIBLE METALLIC CONDUIT	[Symbol]	[Symbol]	INTERCOM CALL BUTTON	[Symbol]	OCCUPANCY SENSOR - DUAL TECHNOLOGY TYPE FOR LIGHTING
FTU	FAN TERMINAL UNIT	[Symbol]	[Symbol]	VOLUME CONTROL	[Symbol]	OCCUPANCY SENSOR - P.I.R. TYPE FOR LIGHTING
G	GROUND	[Symbol]	[Symbol]	GENERATOR ANNUNCIATOR PANEL	[Symbol]	DIMMER SWITCH (VERIFY COMPATIBILITY WITH LOAD SERVED)
GAP	GENERATOR ANNUNCIATOR PANEL	[Symbol]	[Symbol]	GROUND FAULT CIRCUIT INTERRUPTER	[Symbol]	LOW VOLTAGE LIGHTING SWITCH
GFCI	GROUND FAULT CIRCUIT INTERRUPTER	[Symbol]	[Symbol]	GENERATOR TRANSFER DEVICE	[Symbol]	ROOM LIGHTING CONTROLLER
GRS	GALVANIZED RIGID STEEL	[Symbol]	[Symbol]	HORSEPOWER	[Symbol]	DAYLIGHT SENSOR
GTD	GENERATOR TRANSFER DEVICE	[Symbol]	[Symbol]	HEAT TRACE	[Symbol]	CEILING FAN
HP	HORSEPOWER	[Symbol]	[Symbol]	HIGH VOLTAGE	[Symbol]	
HT	HEAT TRACE	[Symbol]	[Symbol]	ISOLATED GROUND	[Symbol]	
HV	HIGH VOLTAGE	[Symbol]	[Symbol]	INCANDESCENT	[Symbol]	
IG	ISOLATED GROUND	[Symbol]	[Symbol]	JUNCTION BOX	[Symbol]	
INCAND	INCANDESCENT	[Symbol]	[Symbol]	THOUSAND	[Symbol]	
JB	JUNCTION BOX	[Symbol]	[Symbol]	MAIN CIRCUIT BREAKER	[Symbol]	
K	THOUSAND	[Symbol]	[Symbol]	MAIN DISTRIBUTION PANEL	[Symbol]	
MCB	MAIN CIRCUIT BREAKER	[Symbol]	[Symbol]	MAIN HOLE	[Symbol]	
MDP	MAIN DISTRIBUTION PANEL	[Symbol]	[Symbol]	MAIN LUGS ONLY	[Symbol]	
MH	MAIN HOLE	[Symbol]	[Symbol]	MOUNTED	[Symbol]	
MLO	MAIN LUGS ONLY	[Symbol]	[Symbol]	NEUTRAL	[Symbol]	
MTD	MOUNTED	[Symbol]	[Symbol]	NORMALLY CLOSED	[Symbol]	
N	NEUTRAL	[Symbol]	[Symbol]	NATIONAL ELECTRIC CODE	[Symbol]	
NC	NORMALLY CLOSED	[Symbol]	[Symbol]	NOM FUSED	[Symbol]	
NEC	NATIONAL ELECTRIC CODE	[Symbol]	[Symbol]	NOT IN CONTRACT	[Symbol]	
NF	NOM FUSED	[Symbol]	[Symbol]	NIGHT LIGHT	[Symbol]	
NIC	NOT IN CONTRACT	[Symbol]	[Symbol]	NORMALLY OPEN	[Symbol]	
NL	NIGHT LIGHT	[Symbol]	[Symbol]	POLE	[Symbol]	
NO	NORMALLY OPEN	[Symbol]	[Symbol]	PULL BOX	[Symbol]	
P	POLE	[Symbol]	[Symbol]	PANEL	[Symbol]	
PB	PULL BOX	[Symbol]	[Symbol]	POWER	[Symbol]	
PNL	PANEL	[Symbol]	[Symbol]	STUNT TRIP	[Symbol]	
PWR	POWER	[Symbol]	[Symbol]	SWITCH	[Symbol]	
ST	STUNT TRIP	[Symbol]	[Symbol]	TRANSFORMER	[Symbol]	
SW	SWITCH	[Symbol]	[Symbol]	TELEPHONE TERMINAL BOARD	[Symbol]	
T	TRANSFORMER	[Symbol]	[Symbol]	TELEVISION	[Symbol]	
TTB	TELEPHONE TERMINAL BOARD	[Symbol]	[Symbol]	TRANSIENT VOLTAGE SURGE SUPPRESSOR	[Symbol]	
TV	TELEVISION	[Symbol]	[Symbol]	UCT	[Symbol]	
TVSS	TRANSIENT VOLTAGE SURGE SUPPRESSOR	[Symbol]	[Symbol]	UG	[Symbol]	
UCT	MOUNTED UNDER COUNTER TOP (ELEVATION MAY VARY)	[Symbol]	[Symbol]	UH	[Symbol]	
UG	UNDER GROUND	[Symbol]	[Symbol]	UNO	[Symbol]	
UH	UNIT HEATER	[Symbol]	[Symbol]	UPS	[Symbol]	
UNO	UNLESS NOTED OTHERWISE	[Symbol]	[Symbol]	V	[Symbol]	
UPS	UNINTERRUPTIBLE POWER SUPPLY	[Symbol]	[Symbol]	VFD	[Symbol]	
V	VOLTAGE	[Symbol]	[Symbol]	W	[Symbol]	
VFD	VARIABLE FREQUENCY DRIVE	[Symbol]	[Symbol]	WG	[Symbol]	
W	WIRE	[Symbol]	[Symbol]	WP	[Symbol]	
WG	WIRE GUARD	[Symbol]	[Symbol]	XFMR	[Symbol]	
WP	WEATHER PROOF	[Symbol]	[Symbol]			
XFMR	TRANSFORMER	[Symbol]	[Symbol]			

1) SEE GENERAL NOTE #6.



LIGHTING CONTROL-ROCK ISLAND STREET LIGHTING
NO SCALE

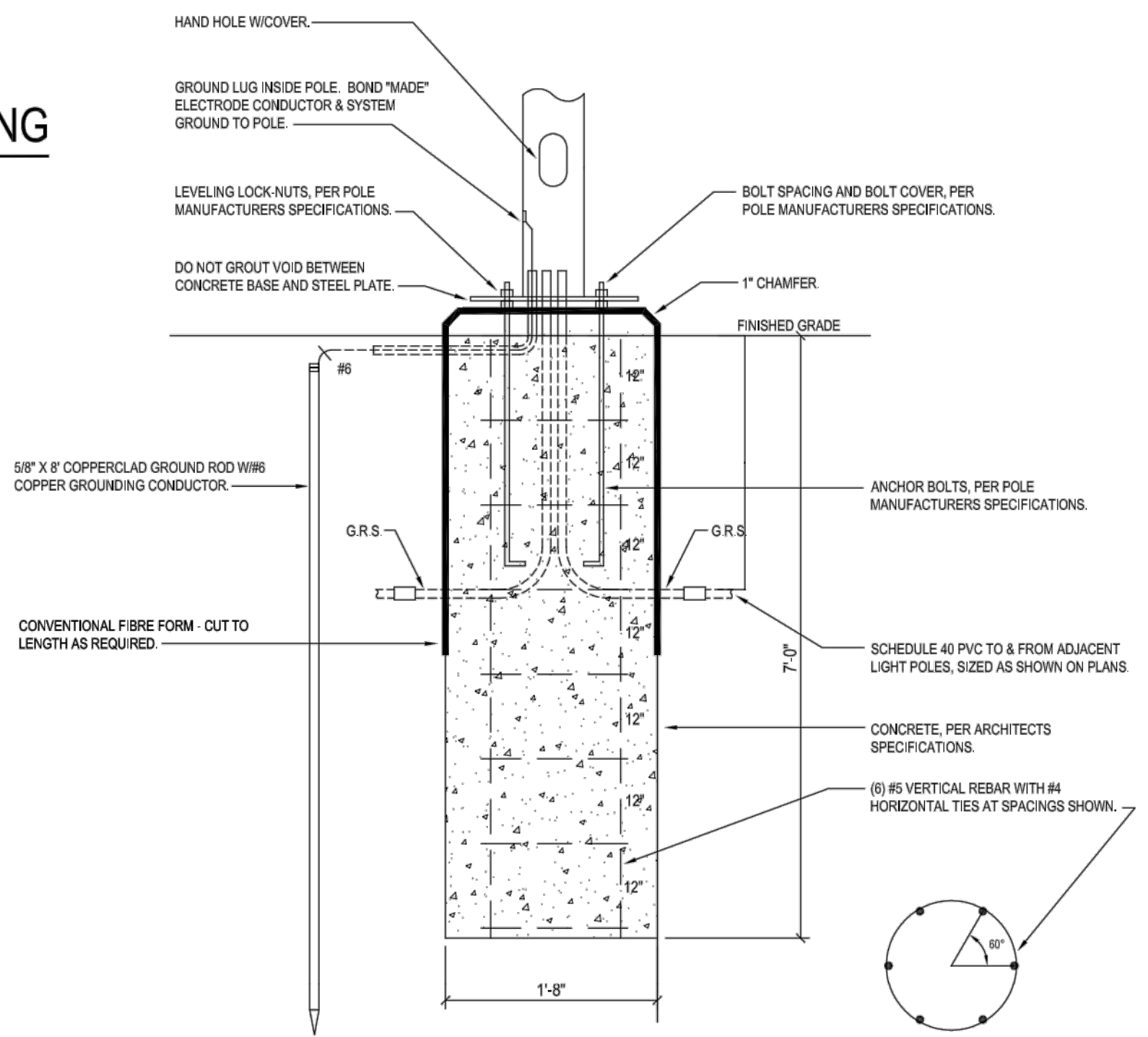


LIGHTING CONTROL-MOSELY STREET LIGHTING
NO SCALE

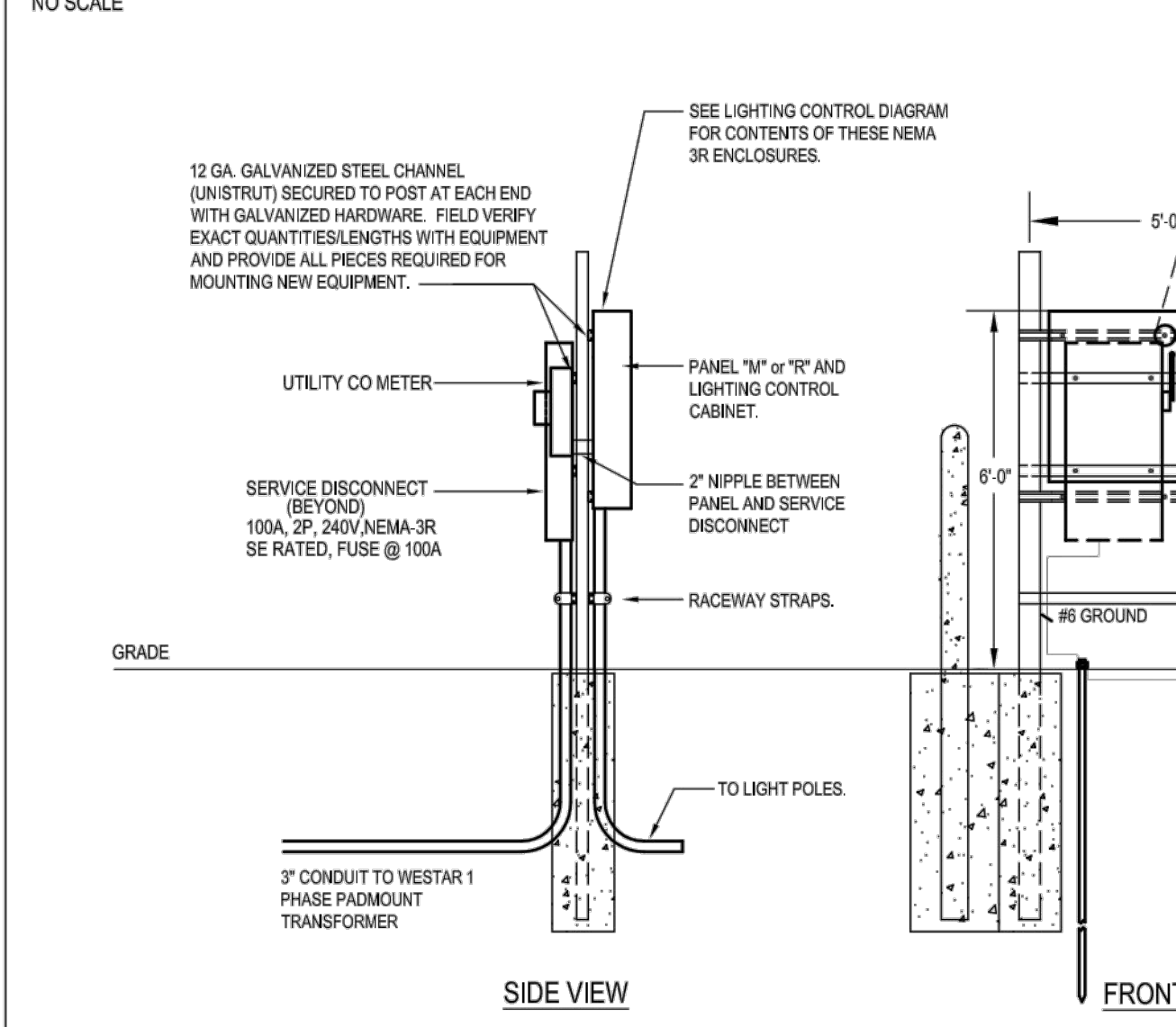
LIGHT FIXTURE SCHEDULE					
TYPE	DESCRIPTION	MANUFACTURER	MODEL NO.	LAMPS	VOLT.
F	PEMCO LED POLE LIGHT	PEMCO	CORO-AC PRIS-64W120K-II-AUTO-BK	LED W/UNT	240

GENERAL NOTES:
- REFER TO ALL PLAN SHEETS AND SPECIFICATIONS FOR LIGHT FIXTURE REQUIREMENTS. DO NOT RELY SOLELY ON THE LIGHT FIXTURE SCHEDULE.
LIGHT FIXTURE SCHEDULE NOTES:
① PROVIDE 20' TAPERED POLE. PEMCO # PLB 416-5-20-PCR-SMOOTH WITH GFI RECEPTACLE MOUNTED AT 10' AFG. SEE POLE BASE DETAIL.
② PROVIDE PEMCO # PLA-83201 ARM. SEE DETAIL DRAWING FOR PLACEMENT.
③ SEE LIGHT FIXTURE AND POLE DETAIL FOR FIXTURE MOUNTING HEIGHT AND LOCATION.

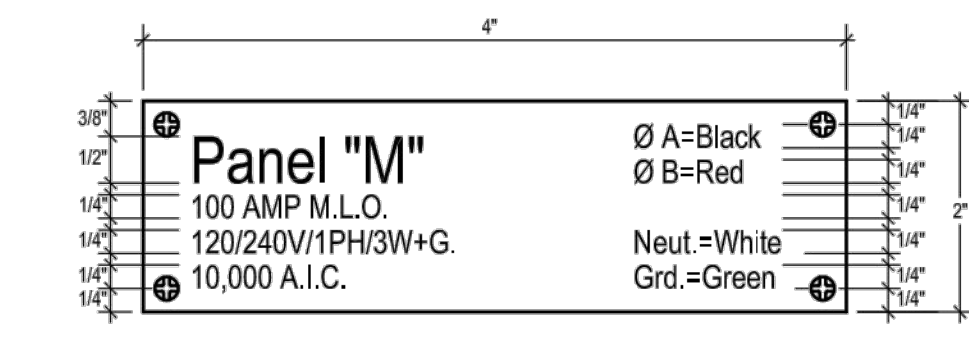
DISCONNECT SWITCH SCHEDULE (SWITCHES TO BE MOUNTED AT UNIT SERVED)		
LOAD SERVED	DISC. SWITCH SIZE (FUSE)	WIRE/CONDUIT SIZE FROM SOURCE TO EQUIPMENT
PANEL M	100A-3P-240V-3R (100A) SERVICE ENTRANCE RATED	3/8" & 18G. IN 2" N/PFLE
PANEL R	100A-3P-240V-3R (100A) SERVICE ENTRANCE RATED	3/8" & 18G. IN 2" N/PFLE



LIGHTING POLE BASE DETAIL - DETAIL
NO SCALE



NEW ELECTRICAL PANEL(S) MOUNTING DETAIL - STREET LIGHTING
NO SCALE



PANEL NAMEPLATES
NO SCALE TYPICAL ALL PANELBOARDS

MOSLEY & ROCK ISLAND PAVING ELECTRICAL PLAN

DATE: OCT. 2015
DESIGN: SAM
DRAWN: RCS
REVIEW: 9-25-2015

RUGGLES & BOHM
ENGINEERING | SURVEYING | LANDSCAPE ARCHITECTURE | GOVERNMENT
924 NORTH MAIN WICHITA, KANSAS 67203 P (316) 264-8000 F (316) 264-4821 WWW.RUGGLESANDBOHM.COM

PROJECT NUMBER: 472-85915
DRAWING FILE: 4531T NTS

DATE: OCT. 2015
DESIGN: SAM
DRAWN: RCS
REVIEW: 9-25-2015

SHEET: 41 OF 59