

PANEL M											
VOLTAGE (L-N):		120		ENCLOSURE TYPE:		NO					
VOLTAGE (L-L):		240		MOUNTING:		SURFACE					
PHASES, WIRES:		1 ϕ , 3 W		AIC RATING:		10000					
MINIMUM BUS CAPACITY (A):		100 A		FED FROM:		---					
MAIN SIZE & TYPE:		100 A MLD		NOTES:		NEMA 3R, COMMERCIAL GRADE					
CKT NO	DESCRIPTION	TRIP AMPS	POLE	PHASE LOADS (VA)		POLE	TRIP AMPS	DESCRIPTION	CKT NO		
1,3	Lights	20	2	450	180		1	20 Pole Receptacle	2		
1,3	Lights	20	2			450	180	1	20 Pole Receptacle	4	
5	Pole Receptacle	20	1	180	180		1	20 Pole Receptacle	6		
7	Pole Receptacle	20	1			180	180	1	20 Pole Receptacle	8	
9	Pole Receptacle	20	1	180	180		1	20 Pole Receptacle	10		
11	Pole Receptacle	20	1			180	180	1	20 Convenience Receptacle	12	
13	Pole Receptacle	20	1	180	180		1	15 Irrigation control	14		
15	Spare	20	1			0	0	1	20 Spare	16	
17	Spare	20	1	0	0			1	20 Spare	18	
19	Spare	20	1			0	0	1	20 Spare	20	
				CONNECTED LOAD PHASE TOTALS (kVA)							
				1710		1350					
		CONNECTED LOAD (kVA)	DEMAND FACTOR	DEMAND LOAD (kVA)	DEMAND LOAD SPARE CAPACITY		31 kVA				
Lighting		0.9	1.00	0.9	16.1 kVA		67.3 AMPS				
Receptacles		2.2	1.00	2.2	67.3 AMPS		84%				
TOTAL LOAD (AMPS)		3.1		3.1							
		12.8		12.8							

PANEL R											
VOLTAGE (L-N):		120		ENCLOSURE TYPE:		NO					
VOLTAGE (L-L):		240		MOUNTING:		SURFACE					
PHASES, WIRES:		1 ϕ , 3 W		AIC RATING:		10000					
MINIMUM BUS CAPACITY (A):		100 A		FED FROM:		---					
MAIN SIZE & TYPE:		100 A MLD		NOTES:		NEMA 3R, COMMERCIAL GRADE					
CKT NO	DESCRIPTION	TRIP AMPS	POLE	PHASE LOADS (VA)		POLE	TRIP AMPS	DESCRIPTION	CKT NO		
1,3	Lights	20	2	400	180		1	20 Pole Receptacle	2		
1,3	Lights	20	2			400	180	1	20 Pole Receptacle	4	
5	Pole Receptacle	20	1	180	180		1	20 Pole Receptacle	6		
7	Pole Receptacle	20	1			180	180	1	20 Pole Receptacle	8	
9	Pole Receptacle	20	1	180	180		1	20 Pole Receptacle	10		
11	Pole Receptacle	20	1			180	180	1	20 Convenience Receptacle	12	
13	Spare	20	1	0	0			1	20 Spare	14	
15	Spare	20	1			0	0	1	20 Spare	16	
17	Spare	20	1	0	0			1	20 Spare	18	
19	Spare	20	1			0	0	1	20 Spare	20	
				CONNECTED LOAD PHASE TOTALS (kVA)							
				1300		1300					
		CONNECTED LOAD (kVA)	DEMAND FACTOR	DEMAND LOAD (kVA)	DEMAND LOAD SPARE CAPACITY		2.6 kVA				
Lighting		0.8	1.00	0.8	16.6 kVA		69.2 AMPS				
Receptacles		1.8	1.00	1.8	69.2 AMPS		86%				
TOTAL LOAD (AMPS)		2.6		2.6							
		10.8		10.8							

Aluminum

DECORATIVE POLES AND BASES

PLB 416 DECORATIVE ALUMINUM POLE 4-BOLT ANCHOR BASE

- 4" - 8" to 14" standard heights
- 5" - 8" to 20" standard heights
- Straight or tapered, smooth or fluted poles
- For single or multiple luminaire mounting

SPECIFICATIONS
All aluminum alloys comply with metallurgical and mechanical properties set forth in the Aluminum Association Standards.

SHAFT
The shaft is extruded from all new 6061 aluminum alloy tubing, and has a fluted or smooth, straight upper section on a cast decorative base.

ANCHOR BASE
Each standard includes an A356 alloy cast aluminum four bolt base. The shaft is inserted and joined by a continuous circumferential weld at the outside top and inside bottom of the anchor base. A grounding lug is welded opposite the handhole.

ACCESS DOOR
An extra large access cover is included. A grounding lug is also provided.

ANCHOR BOLTS
Each standard includes four 3/4" x 2 1/2" steel hot dip galvanized anchor bolts each with two nuts, two flat washers and one lock washer.

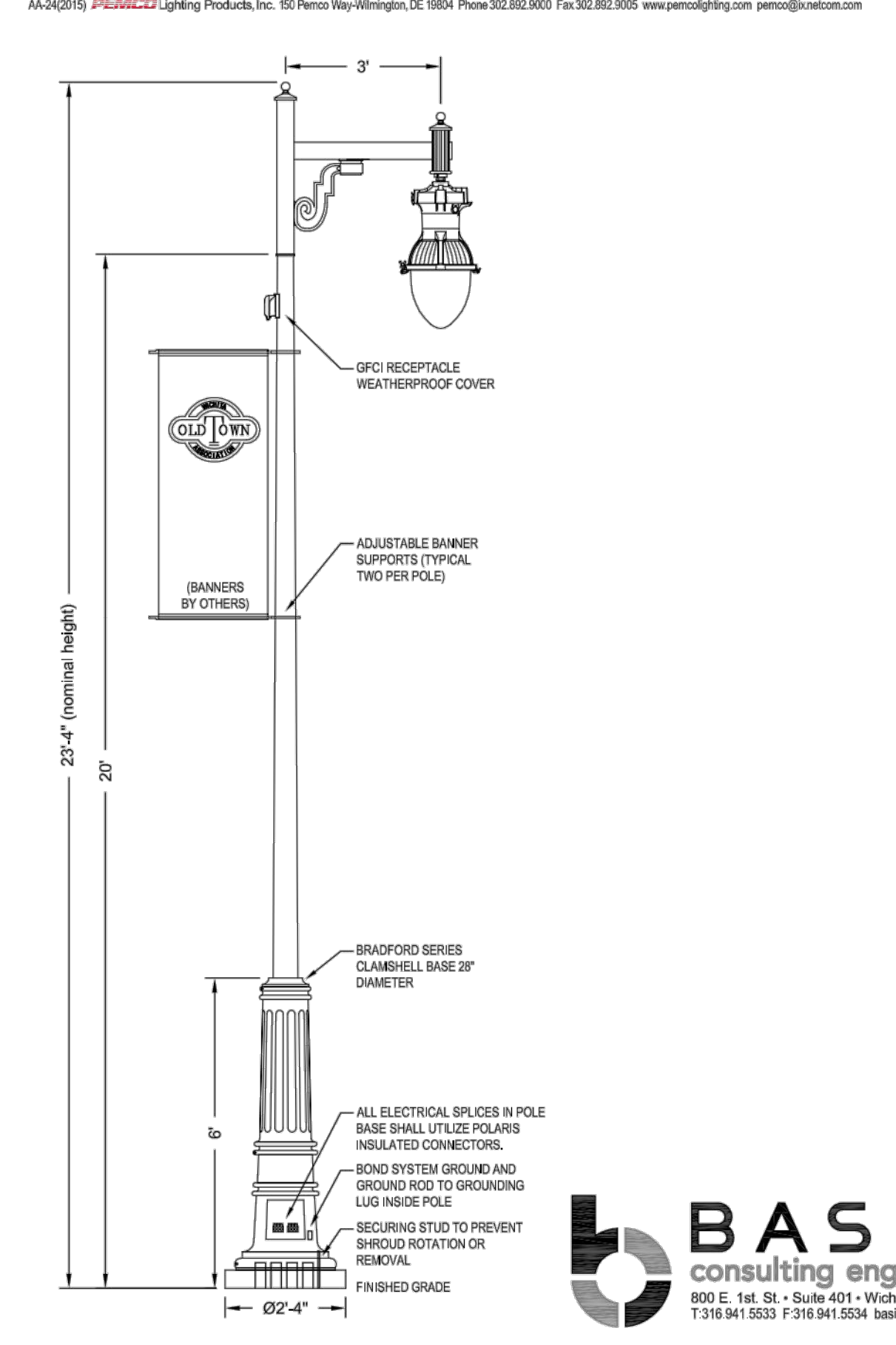
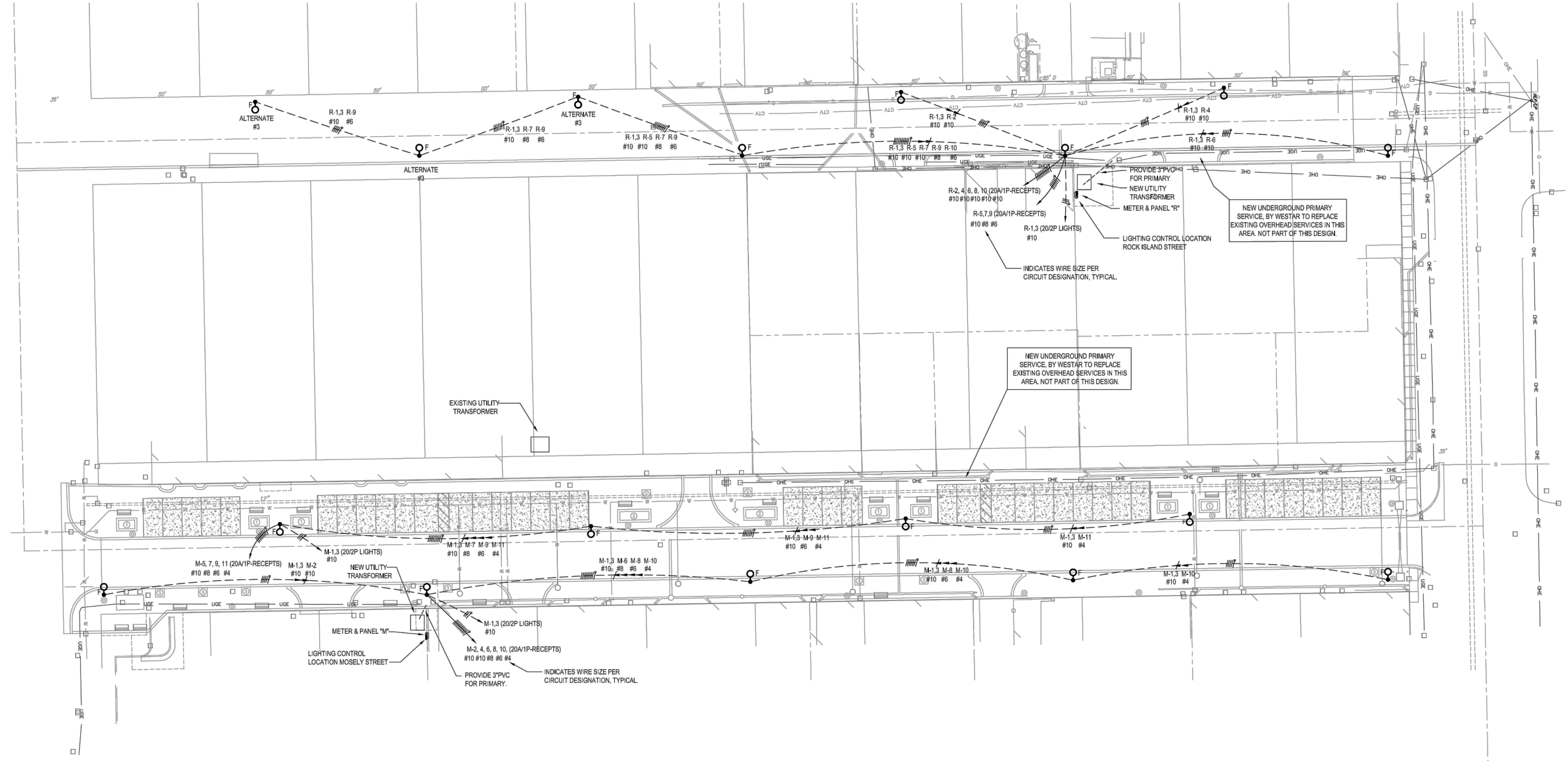
FINISH
Standard colors are: black, medium bronze, dark bronze, white, green, beige or silver metallic. Premium colors are: Venetian Bronze, Pewter Bronze, Silver Sparkle or custom colors. All RAL colors are available to match poles or fixtures. Contact PEMCO for details.

OPTIONS
Smooth tapered shaft 4" to 3" or 5" to 3".
Fluted tapered shaft 5" to 3".

ORDERING EXAMPLE
PLB 416-4-14 4" x 3.25 x 14" Straight 4" BK

ORDERING CHART

MODEL NUMBER	SIZE	BASE HT - DIA	POLE TYPE	SHAFT DIAMETER	FINISH
PLB 416-4	4" x 3.25 x 8"	30" - 10"	Straight Smooth or Fluted, Enduro	4"	Standard colors are: Black, Medium Bronze, Dark Bronze, White, Green, Beige or Silver Metallic. Premium colors are: Venetian Bronze, Pewter Bronze, Silver Sparkle or custom colors. All RAL colors are available to match poles or fixtures. Contact PEMCO for details.
PLB 416-12	4" x 3.25 x 12"	30" - 10"	Straight Smooth or Fluted, Enduro	4"	
PLB 416-14	4" x 3.25 x 14"	30" - 10"	Straight Smooth or Fluted, Enduro	4"	
PLB 416-5	5" x 3.88 x 8"	30" - 10"	Straight Smooth or Fluted, Enduro	5"	
PLB 416-12	5" x 3.88 x 12"	30" - 10"	Straight Smooth or Fluted, Enduro	5"	
PLB 416-14	5" x 3.88 x 14"	30" - 10"	Straight Smooth or Fluted, Enduro	5"	
PLB 416-6	6" x 4.51 x 8"	30" - 10"	Straight Smooth or Fluted, Enduro	6"	
PLB 416-12	6" x 4.51 x 12"	30" - 10"	Straight Smooth or Fluted, Enduro	6"	
PLB 416-14	6" x 4.51 x 14"	30" - 10"	Straight Smooth or Fluted, Enduro	6"	
PLB 416-8	8" x 5.14 x 8"	30" - 10"	Straight Smooth or Fluted, Enduro	8"	
PLB 416-12	8" x 5.14 x 12"	30" - 10"	Straight Smooth or Fluted, Enduro	8"	
PLB 416-14	8" x 5.14 x 14"	30" - 10"	Straight Smooth or Fluted, Enduro	8"	
PLB 416-10	10" x 5.77 x 8"	30" - 10"	Straight Smooth or Fluted, Enduro	10"	
PLB 416-12	10" x 5.77 x 12"	30" - 10"	Straight Smooth or Fluted, Enduro	10"	
PLB 416-14	10" x 5.77 x 14"	30" - 10"	Straight Smooth or Fluted, Enduro	10"	



ELECTRICAL SITE PLAN

1" = 30'-0"

MOSLEY & ROCK ISLAND PAVING ELECTRICAL PLAN

RUGGLES & BOHM
ENGINEERING | SURVEYING | LANDSCAPE ARCHITECTURE | GOVERNMENT

924 NORTH MARK WICHITA, KANSAS 67203 P 316 264-8008 F 316 264-8621 WWW.RBANSAL.COM

PROJECT NUMBER: 474-25-5915
RB JOB NO.: 4531T
DWG. SCALE: 1" = 30'-0"

DATE: OCT. 2015
DESIGN: SAM
DRAWN: RCS
REVIEW: 9-25-2015
SHEET: 42 OF 59