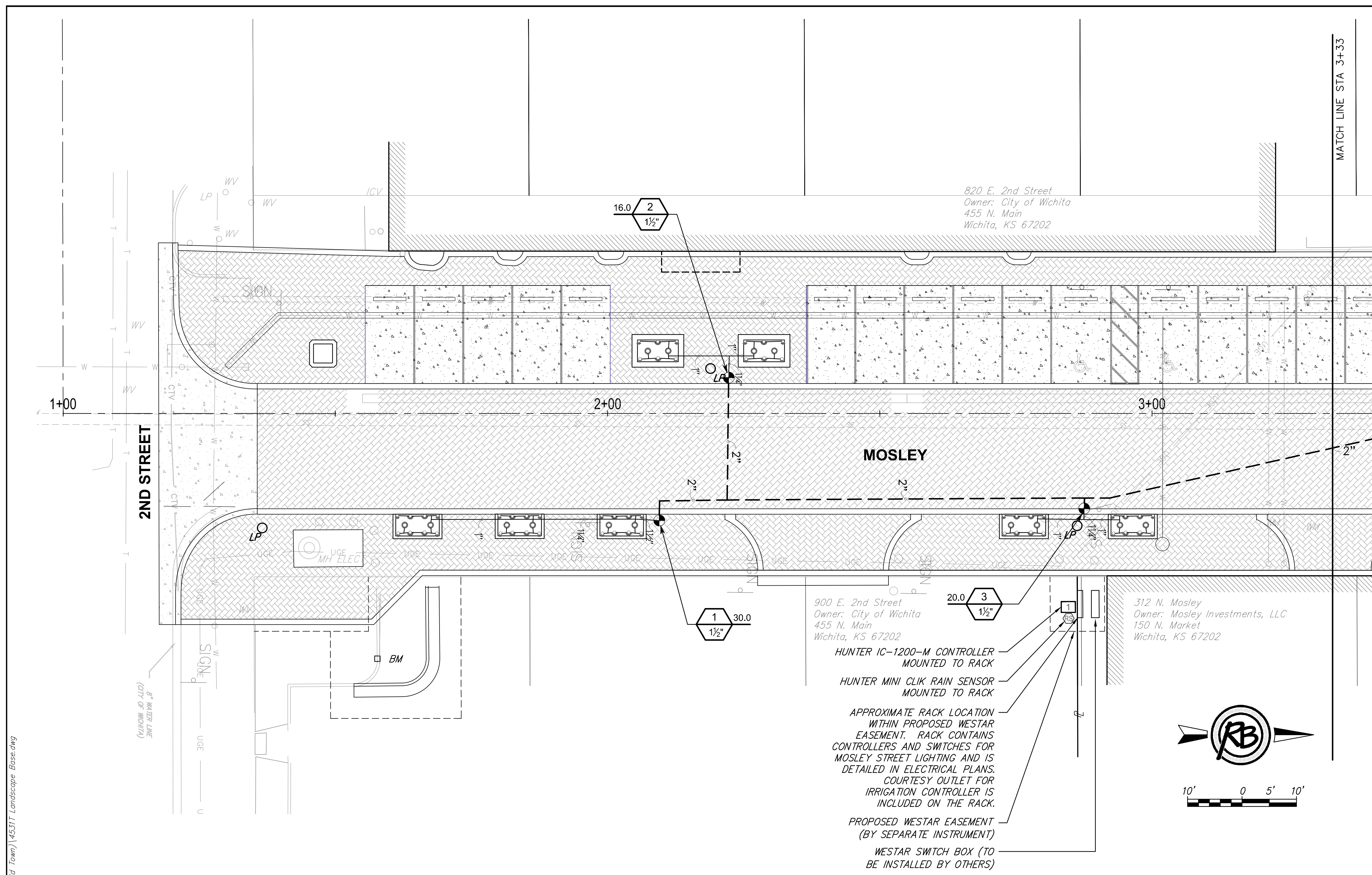


IRRIGATION NOTES

1. LATERAL AND MAIN LINE SHOWN SCHEMATICALLY FOR CLARITY.
2. ALL WORK SHALL BE DONE IN ACCORDANCE WITH SECTION 900 (LANDSCAPE AND IRRIGATION) OF THE CITY OF WICHITA'S STANDARD SPECIFICATIONS.
3. ALL IRRIGATION PIPES SHALL BE 1" UNLESS OTHERWISE NOTED.
4. VALVES SHALL BE PLACED IN PLANTERS, WITH PREFERENCE TO GROUND-LEVEL PLANTERS.
5. IRRIGATION EQUIPMENT SHALL NOT BE LOCATED IN CENTER OF PLANTERS. PRIORITY SHALL BE GIVEN TO THE LOCATION OF TREES IN THE CENTER OF THOSE PLANTERS. REMAINING PLANT MATERIALS MAY BE ADJUSTED ACCORDINGLY TO ACCOMMODATE VALVES AND OTHER EQUIPMENT.
6. OTHER THAN STREET CROSSINGS WHERE NECESSARY, MAINLINE AND LATERALS SHALL BE LOCATED UNDER PARKING AND SIDEWALK, WHERE POSSIBLE.
7. ELECTRICAL CONTRACTOR SHALL COORDINATE WITH WESTAR FOR LOCATION OF RACK WITHIN EASEMENT.
8. IRRIGATION CONTRACTOR SHALL PLACE CONTROLLER'S POWER CABLE IN CONDUIT BETWEEN THE CONTROLLER AND OUTLET ON THE RACK TO PREVENT DAMAGE.



IRRIGATION PLAN - STA 1+00 TO STA 3+33
SCALE: 1" = 10'

F:\Projects\Projects 4500-4599\45317 (Mosley and Rock Island - Old Town)\45317 Landscape Base.dwg

(c) Copyright 2015, Ruggles & Bohm, P.A.

MOSLEY & ROCK ISLAND Irrigation Plan			
	RUGGLES & BOHM		DATE Dec. 2, 2015
	ENGINEERING SURVEYING LANDSCAPE ARCHITECTURE GOVERNMENT 924 NORTH MAIN WICHITA, KANSAS 67203 P (316) 264-8008 F (316) 264-4621 WWW.RUGGLESANDBOHM.COM		DESIGN BT/DK
PROJECT NUMBER 472-85915	RIB JOB NO. 4531T	DWG. SCALE 1" = 10' - 0"	DRAWN DK
DRAWING FILE 4531T Landscape Base [Irrigation Plan]			REVIEW 9-25-2015
			SHEET 49
			OF 59