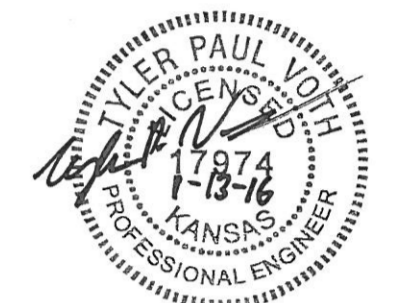
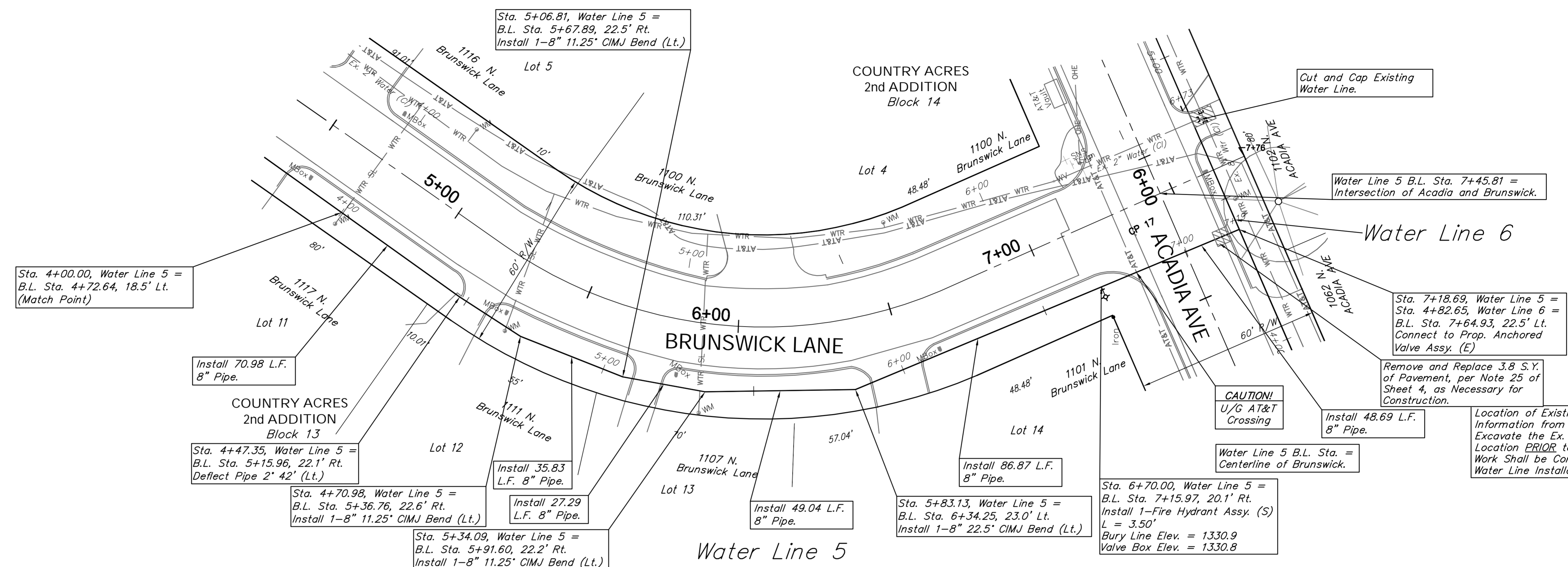
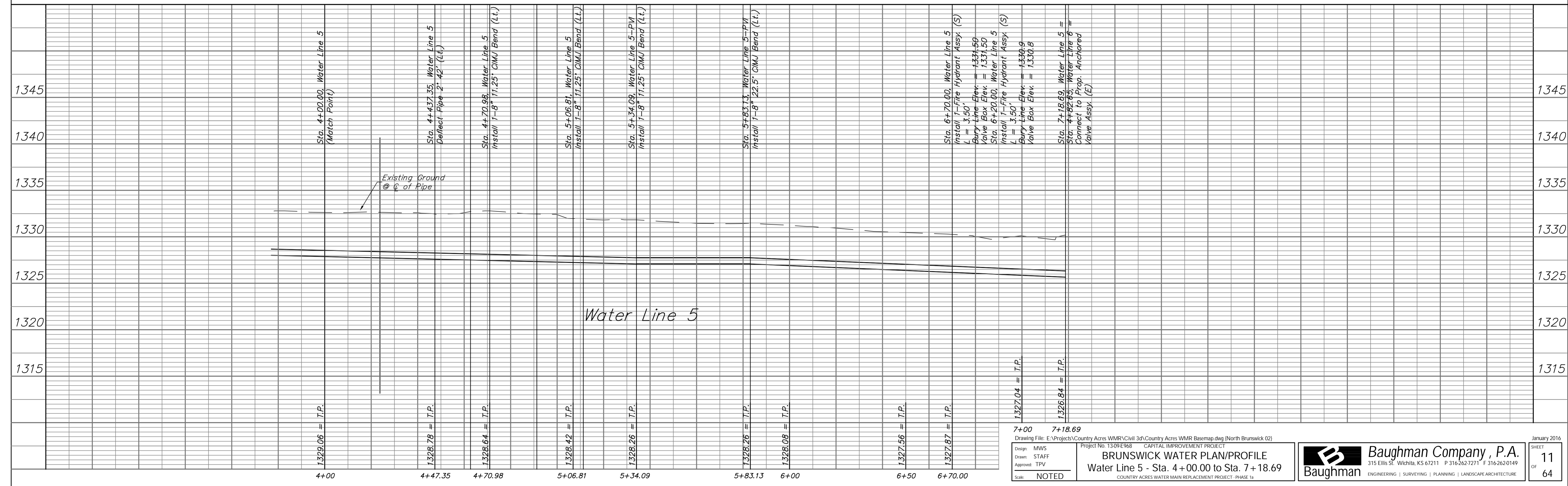


SCALE:  
 HORIZONTAL: 1" = 20'  
 VERTICAL: 1" = 5'



Location of Existing Line is Based on Record Information from the City. The Contractor Shall Excavate the Ex. Water and to Verify Size and Location PRIOR to Beginning Construction. This Work Shall be Considered SUBSIDIARY to the Water Line Installation.



6+70.00 7+18.69  
 Drawing File: E:\Projects\Country Acres WMR\Civil 3d\Country Acres WMR Baseplan.dwg (North Brunswick 02)  
 Design: MWS  
 Drawn: STAFF  
 Approved: TPV  
 Scale: NOTED  
 Project No. 1309E968 CAPITAL IMPROVEMENT PROJECT  
**BRUNSWICK WATER PLAN/PROFILE**  
 Water Line 5 - Sta. 4+00.00 to Sta. 7+18.69  
 COUNTRY ACRES WATER MAIN REPLACEMENT PROJECT - PHASE 1a

**Baughman Company, P.A.**  
 315 Ellis St., Wichita, KS 67211 P 316.262.7271 F 316.262.0149  
 ENGINEERING | SURVEYING | PLANNING | LANDSCAPE ARCHITECTURE

January 2016  
 SHEET  
 11  
 OF  
 64