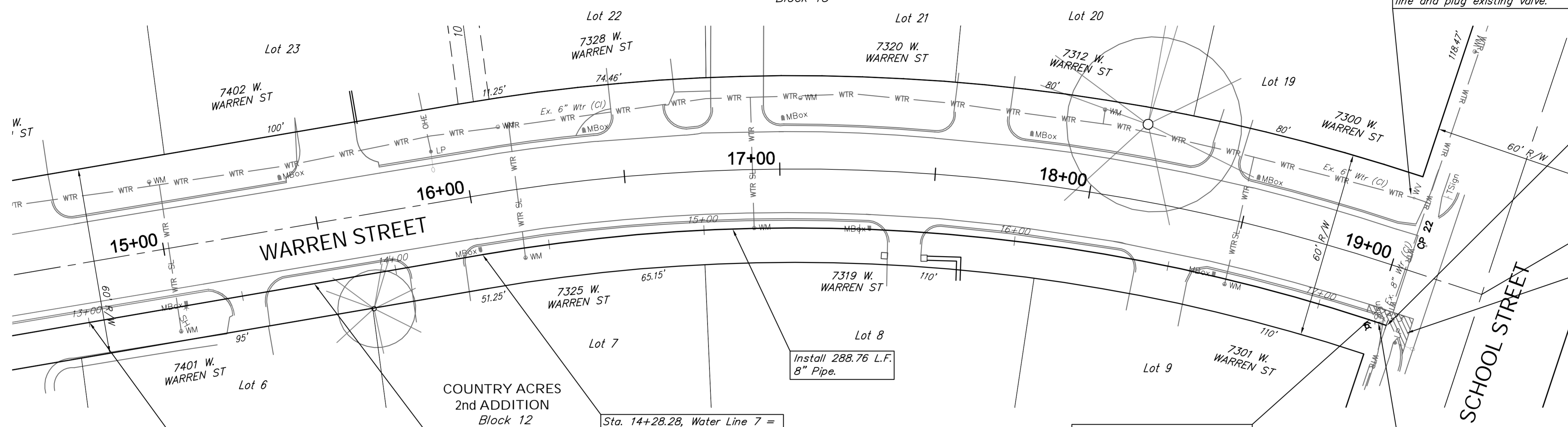


SCALE:
HORIZONTAL: 1" = 20'
VERTICAL: 1" = 5'

Water Line 7 B.L. Sta. =
Centerline of Wilbur/Warren

COUNTRY ACRES
2nd ADDITION
Block 13



Sta. 17+22.72, Water Line 7 =
B.L. Sta. 19+04.39, 19.0' Rt.
Tap Ex. 8" Water Line.
Install 1-8" X 8" Tapping Sleeve (N) & 8"
Tapping Valve with Valve Box, to be
Furnished & Installed by the City of Wichita.
Valve Box Elev. = 1325.5

Water Line 7 B.L. Sta. 19+30.46 =
Intersection of School & Warren

Remove and Replace 8.4 S.Y.
of Pavement, per Note 25 of
Sheet 4, as Necessary for
Construction.



Location of Existing Line is Based on Record
Information from the City. The Contractor Shall
Excavate the Ex. Water and to Verify Size and
Location PRIOR to Beginning Construction. This
Work Shall be Considered SUBSIDIARY to the
Water Line Installation.

Sta. 13+00.00, Water Line 7 =
B.L. Sta. 14+72.41, 19.1' Rt.
(Match Point)

Install 132.90 L.F.
8" Pipe.

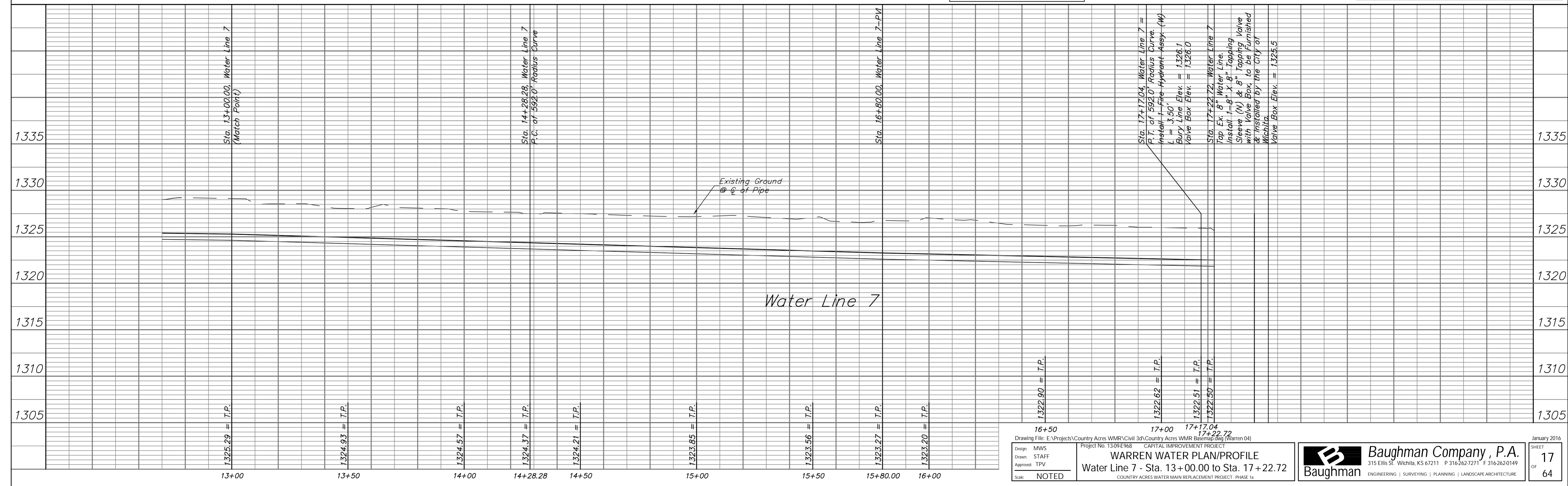
Sta. 14+28.28, Water Line 7 =
B.L. Sta. 16+00.70, 19.0' Rt.
P.C. of 592.0' Radius Curve.

Install 288.76 L.F.
8" Pipe.

Sta. 17+17.04, Water Line 7 =
B.L. Sta. 18+98.65, 19.0' Rt.
P.T. of 592.0' Radius Curve.
Install 1-Fire Hydrant Assy. (W)
L = 3.50'
Bury Line Elev. = 1326.1
Valve Box Elev. = 1326.0

Install 5.68 L.F.
8" DICL Pipe.

Water Line 7



16+50
17+00
17+17.04
17+22.72
Drawing File: E:\Projects\Country Acres WMR\Civil 3d\Country Acres WMR Basin\Maping\Warren 04
Project No. 1309E968 CAPITAL IMPROVEMENT PROJECT
WARREN WATER PLAN/PROFILE
Water Line 7 - Sta. 13+00.00 to Sta. 17+22.72
COUNTRY ACRES WATER MAIN REPLACEMENT PROJECT - PHASE 1a

Baughman Company, P.A.
315 Ellis St., Wichita, KS 67211 P 316.262.7271 F 316.262.0149
ENGINEERING | SURVEYING | PLANNING | LANDSCAPE ARCHITECTURE

January 2016
SHEET
17
OF
64