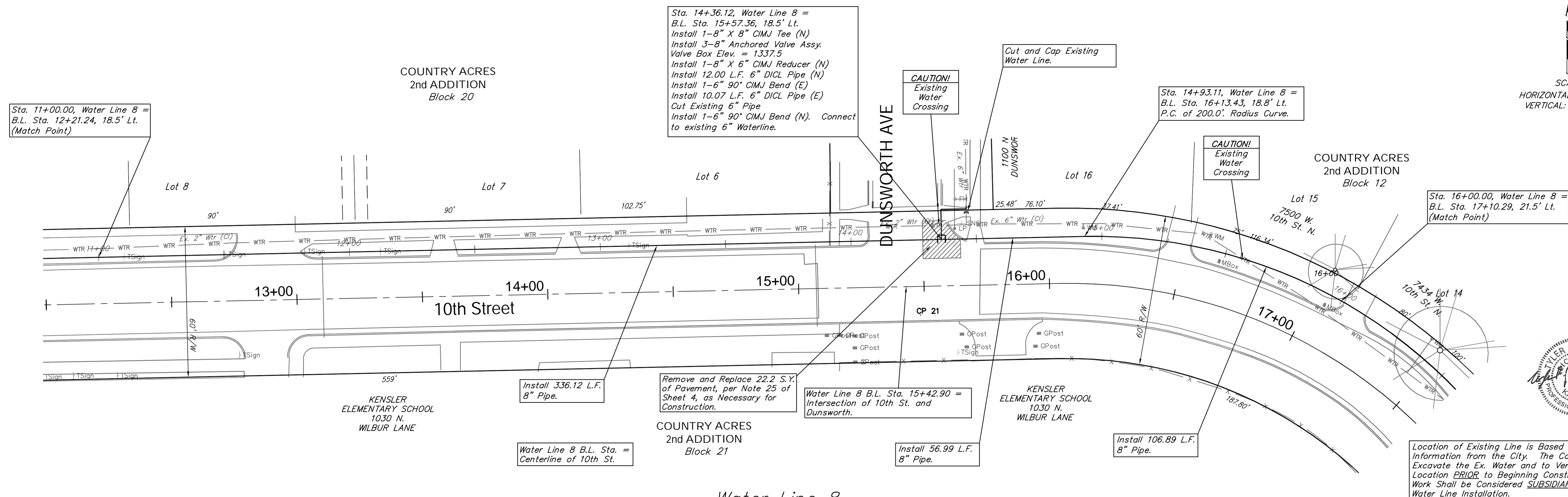
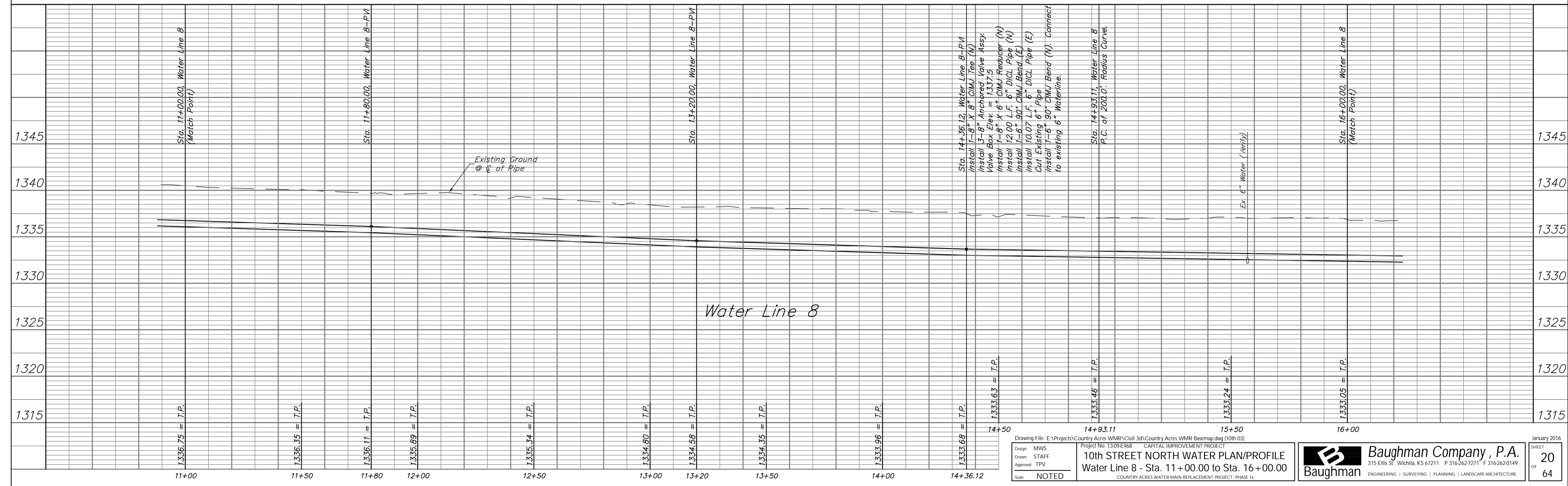


SCALE:  
HORIZONTAL: 1" = 20'  
VERTICAL: 1" = 5'



Water Line 8



Water Line 8

Sta. 11+00.00, Water Line 8 =  
B.L. Sta. 12+21.24, 18.5' Lt.  
(Match Point)

Sta. 14+36.12, Water Line 8 =  
B.L. Sta. 15+57.36, 18.5' Lt.  
Install 1-8" X 8" CIMJ Tee (N)  
Install 3-8" Anchored Valve Assy.  
Valve Box Elev. = 1337.5  
Install 1-8" X 6" CIMJ Reducer (N)  
Install 12.00 L.F. 6" DI CL Pipe (N)  
Install 1-6" 90° CIMJ Bend (E)  
Install 10.07 L.F. 6" DI CL Pipe (E)  
Cut Existing 6" Pipe  
Install 1-6" 90° CIMJ Bend (N). Connect  
to existing 6" Waterline.

Sta. 14+93.11, Water Line 8 =  
B.L. Sta. 16+13.43, 18.8' Lt.  
P.C. of 200.0' Radius Curve.

Sta. 16+00.00, Water Line 8 =  
B.L. Sta. 17+10.29, 21.5' Lt.  
(Match Point)

Install 336.12 L.F.  
8" Pipe.

Remove and Replace 22.2 S.Y.  
of Pavement, per Note 25 of  
Sheet 4, as Necessary for  
Construction.

Water Line 8 B.L. Sta. 15+42.90 =  
Intersection of 10th St. and  
Dunsworth.

Install 56.99 L.F.  
8" Pipe.

Install 106.89 L.F.  
8" Pipe.

Location of Existing Line is Based on Record  
Information from the City. The Contractor Shall  
Excavate the Ex. Water and to Verify Size and  
Location PRIOR to Beginning Construction. This  
Work Shall be Considered SUBSIDIARY to the  
Water Line Installation.

Drawing File: E:\Projects\Country Acres WMR\Civil 3d\Country Acres WMR Basemap.dwg (10th 03)  
Project No. 1309E968 CAPITAL IMPROVEMENT PROJECT  
10th STREET NORTH WATER PLAN/PROFILE  
Water Line 8 - Sta. 11+00.00 to Sta. 16+00.00  
COUNTRY ACRES WATER MAIN REPLACEMENT PROJECT - PHASE 1a

**Baughman Company, P.A.**  
315 Ellis St. Wichita, KS 67211 P 316-262-7271 F 316-262-0149  
ENGINEERING | SURVEYING | PLANNING | LANDSCAPE ARCHITECTURE

January 2016  
SHEET 20 OF 64