

Sta. 20+20.94, Water Line 9B =
B.L. Sta. 20+95.68, 20.0' Lt.
Install 1-8" 22.50' CIMJ Bend (Lt.)
Defect Pipe 0'38'30" (Lt.)
(Match Point)

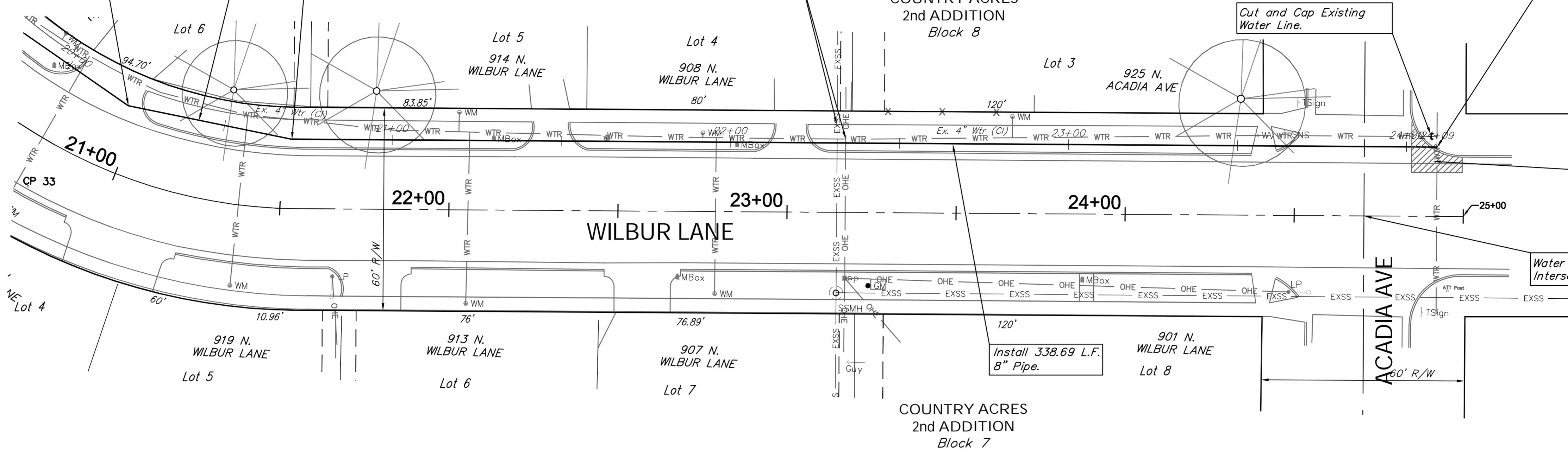
Install 49.37 L.F.
8" Pipe.

Sta. 20+70.31, Water Line 9B =
B.L. Sta. 21+53.13, 20.5' Lt.
Install 1-8" 11.25' CIMJ Bend (Lt.)

CAUTION!
Existing
San. Sewer,
OHE
Crossing

Sta. 24+09.00, Water Line 9B =
B.L. Sta. 24+92.11, 20.5' Lt.
Tap Ex. 8" Water Line.
Install 1-8" X 8" Tapping Sleeve (W) & 8"
Tapping Valve with Valve Box, to be
Furnished & Installed by the City of Wichita.
Valve Box Elev. = 1315.4

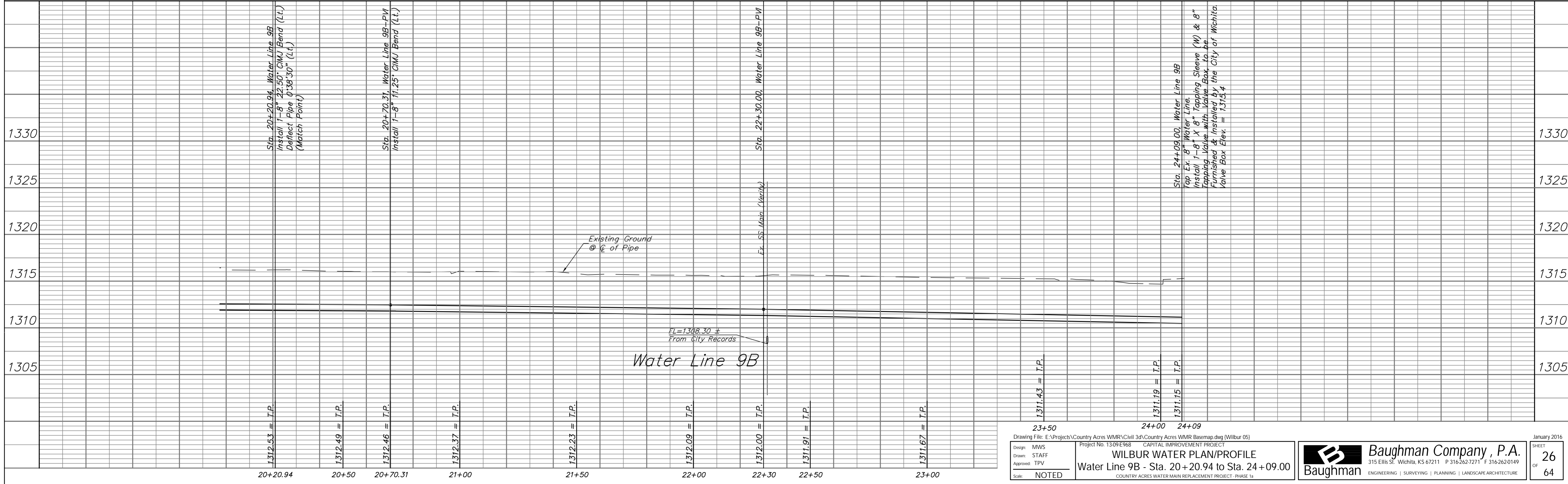
SCALE:
HORIZONTAL: 1" = 20'
VERTICAL: 1" = 5'



Water Line 9A & 9B B.L. Sta. =
Centerline of Wilbur.

Location of Existing Line is Based on Record
Information from the City. The Contractor Shall
Excavate the Ex. Water and to Verify Size and
Location PRIOR to Beginning Construction. This
Work Shall be Considered SUBSIDIARY to the
Water Line Installation.

Water Line 9B



Drawing File: E:\Projects\Country Acres WMR\Civil 3d\Country Acres WMR Basemap.dwg (Wilbur 05)
Project No. 1309E968 CAPITAL IMPROVEMENT PROJECT
Design: MWS
Drawn: STAFF
Approved: TPV
Scale: NOTED

WILBUR WATER PLAN/PROFILE
Water Line 9B - Sta. 20+20.94 to Sta. 24+09.00
COUNTRY ACRES WATER MAIN REPLACEMENT PROJECT - PHASE 1a

Baughman Company, P.A.
315 Ellis St., Wichita, KS 67211 P 316.262.7271 F 316.262.0149
ENGINEERING | SURVEYING | PLANNING | LANDSCAPE ARCHITECTURE