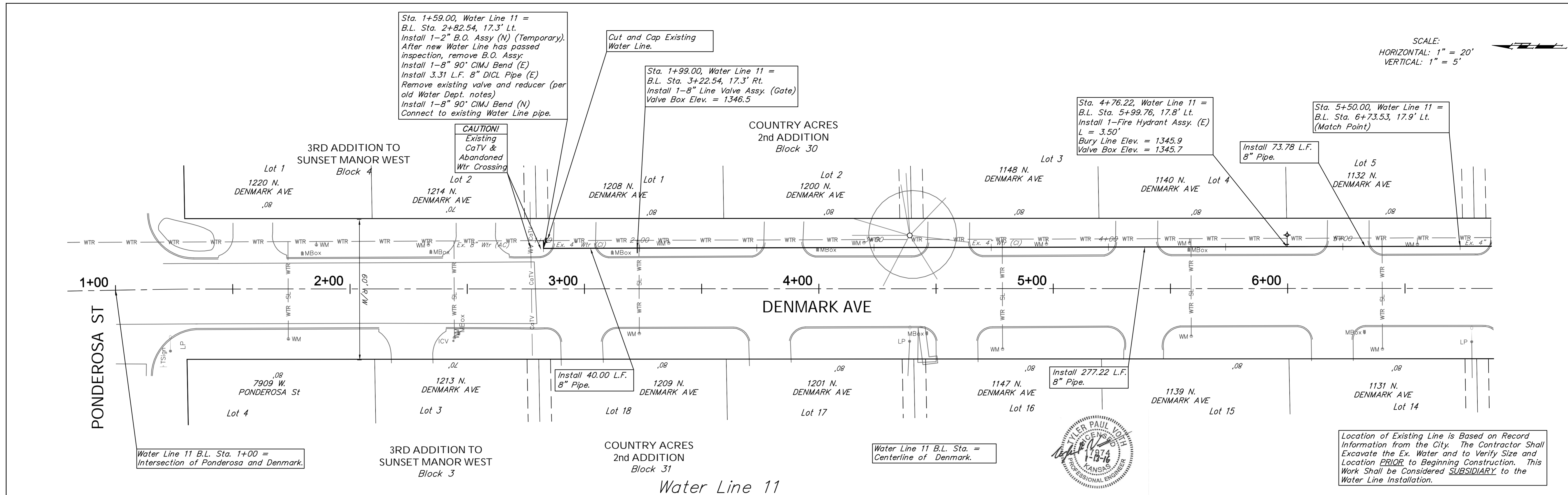


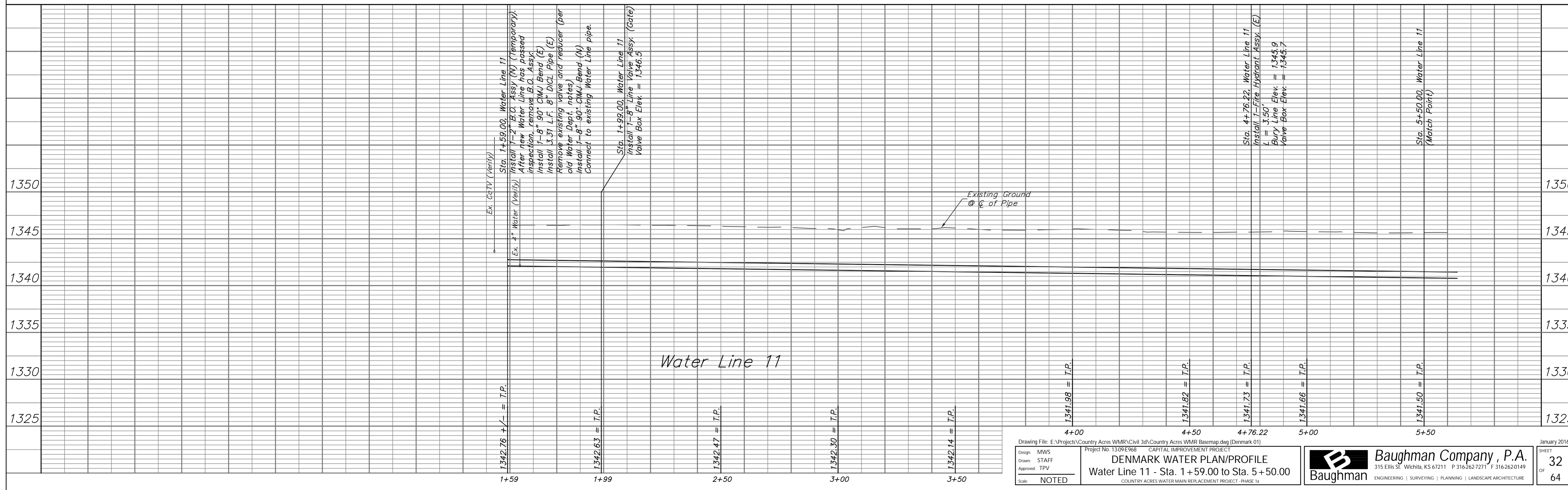
SCALE:
HORIZONTAL: 1" = 20'
VERTICAL: 1" = 5'



Water Line 11 B.L. Sta. 1+00 = Intersection of Ponderosa and Denmark.

Water Line 11 B.L. Sta. = Centerline of Denmark.

Location of Existing Line is Based on Record Information from the City. The Contractor Shall Excavate the Ex. Water and to Verify Size and Location PRIOR to Beginning Construction. This Work Shall be Considered SUBSIDIARY to the Water Line Installation.



Drawing File: E:\Projects\Country Acres WMR\Civil 3d\Country Acres WMR Basemap.dwg (Denmark 01)
Design: MWS
Drawn: STAFF
Approved: TPV
Scale: NOTED
Project No: 1309E968 CAPITAL IMPROVEMENT PROJECT
DENMARK WATER PLAN/PROFILE
Water Line 11 - Sta. 1+59.00 to Sta. 5+50.00
COUNTRY ACRES WATER MAIN REPLACEMENT PROJECT - PHASE 1a

Baughman Company, P.A.
315 Ellis St., Wichita, KS 67211 P 316-262-7271 F 316-262-0149
ENGINEERING | SURVEYING | PLANNING | LANDSCAPE ARCHITECTURE

January 2016
SHEET 32 OF 64