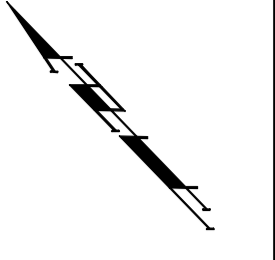
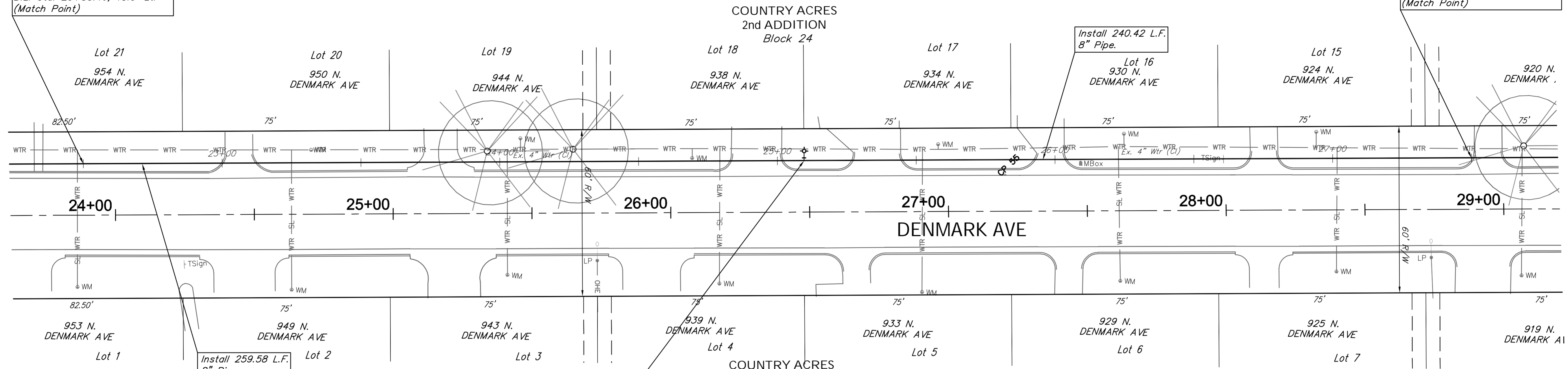


SCALE:
 HORIZONTAL: 1" = 20'
 VERTICAL: 1" = 5'



Sta. 22+50.00, Water Line 11 =
 B.L. Sta. 23+88.46, 18.5' Lt.
 (Match Point)

Sta. 27+50.00, Water Line 11 =
 B.L. Sta. 28+88.46, 18.5' Lt.
 (Match Point)



Sta. 25+09.58, Water Line 11 =
 B.L. Sta. 26+48.03, 18.5' Lt.
 Install 1-Fire Hydrant Assy. (N)
 L = 3.50'
 Bury Line Elev. = 1339.6
 Valve Box Elev. = 1339.5

Water Line 11 B.L. Sta. =
 Centerline of Denmark.

Location of Existing Line is Based on Record Information from the City. The Contractor Shall Excavate the Ex. Water and to Verify Size and Location PRIOR to Beginning Construction. This Work Shall be Considered SUBSIDIARY to the Water Line Installation.



Water Line 11

