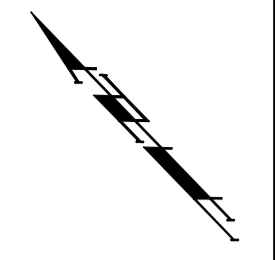


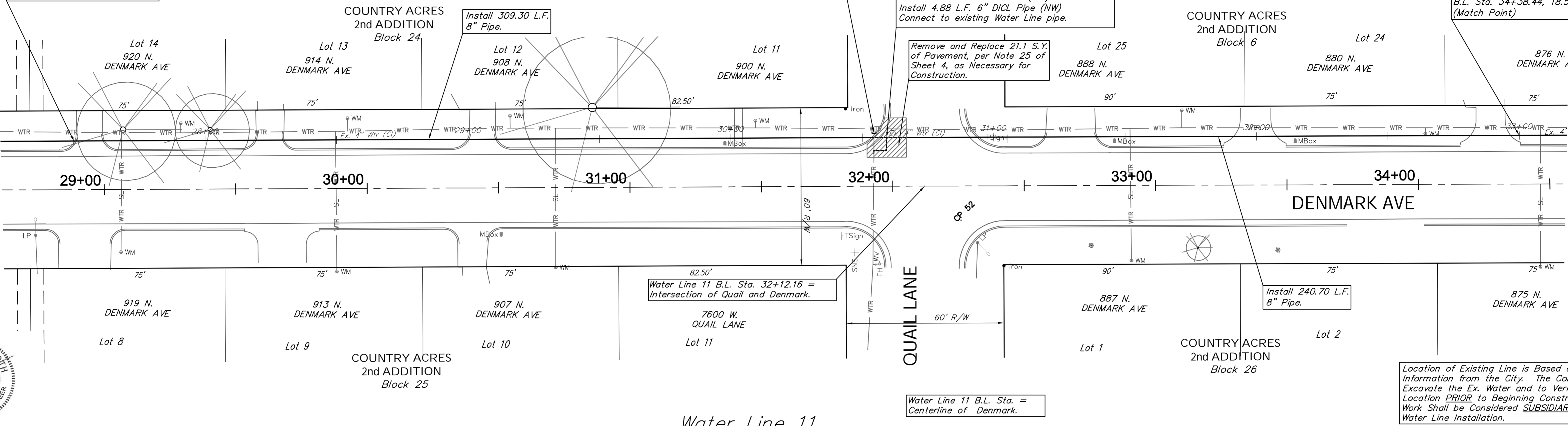
SCALE:  
 HORIZONTAL: 1" = 20'  
 VERTICAL: 1" = 5'



Sta. 27+50.00, Water Line 11 =  
 B.L. Sta. 28+88.46, 18.5' Lt.  
 (Match Point)

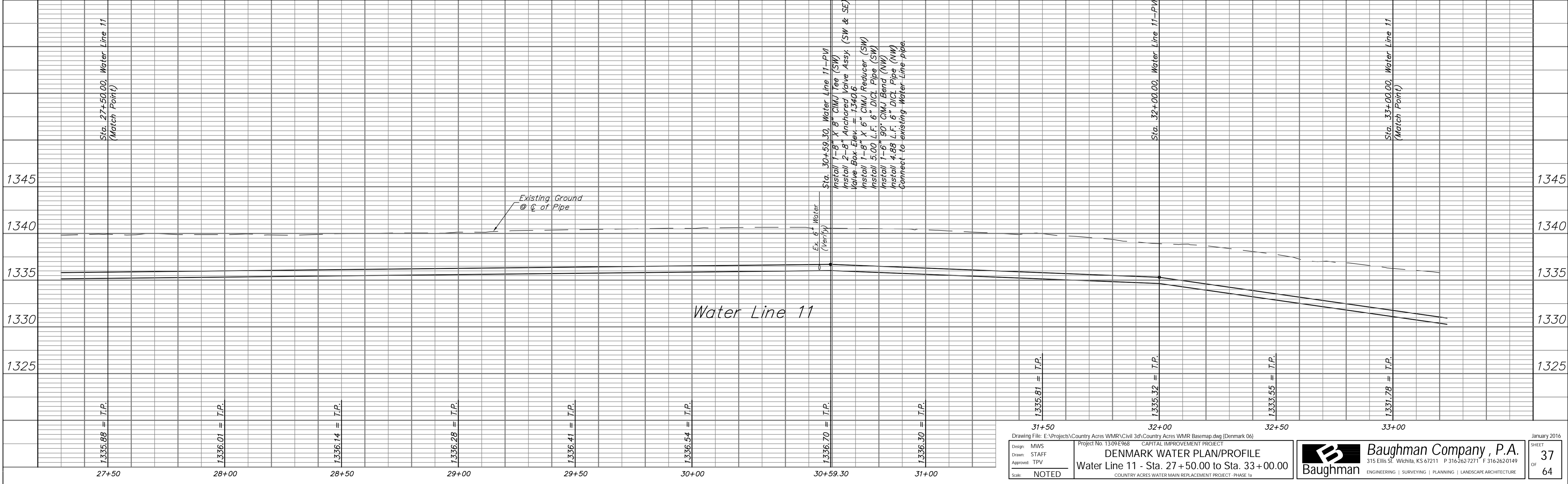
Sta. 30+59.30, Water Line 11 =  
 B.L. Sta. 31+97.74, 18.5' Lt.  
 Install 1-8" X 8" CIMJ Tee (SW)  
 Install 2-8" Anchored Valve Assy. (SW & SE)  
 Valve Box Elev. = 1340.6  
 Install 1-8" X 6" CIMJ Reducer (SW)  
 Install 5.00 L.F. 6" DI CL Pipe (SW)  
 Install 1-6" 90° CIMJ Bend (NW)  
 Install 4.88 L.F. 6" DI CL Pipe (NW)  
 Connect to existing Water Line pipe.

Sta. 33+00.00, Water Line 11 =  
 B.L. Sta. 34+38.44, 18.5' Lt.  
 (Match Point)



Location of Existing Line is Based on Record Information from the City. The Contractor Shall Excavate the Ex. Water and to Verify Size and Location PRIOR to Beginning Construction. This Work Shall be Considered SUBSIDIARY to the Water Line Installation.

Water Line 11



Drawing File: E:\Projects\Country Acres WMR\Civil 3d\Country Acres WMR Basemap.dwg (Denmark 06)  
 Design: MWS  
 Drawn: STAFF  
 Approved: TPV  
 Scale: NOTED  
**DENMARK WATER PLAN/PROFILE**  
 Water Line 11 - Sta. 27 + 50.00 to Sta. 33 + 00.00  
 COUNTRY ACRES WATER MAIN REPLACEMENT PROJECT - PHASE 1a

**Baughman Company, P.A.**  
 315 Ellis St., Wichita, KS 67211 P 316.262.7271 F 316.262.0149  
 ENGINEERING | SURVEYING | PLANNING | LANDSCAPE ARCHITECTURE

January 2016  
 SHEET 37 OF 64