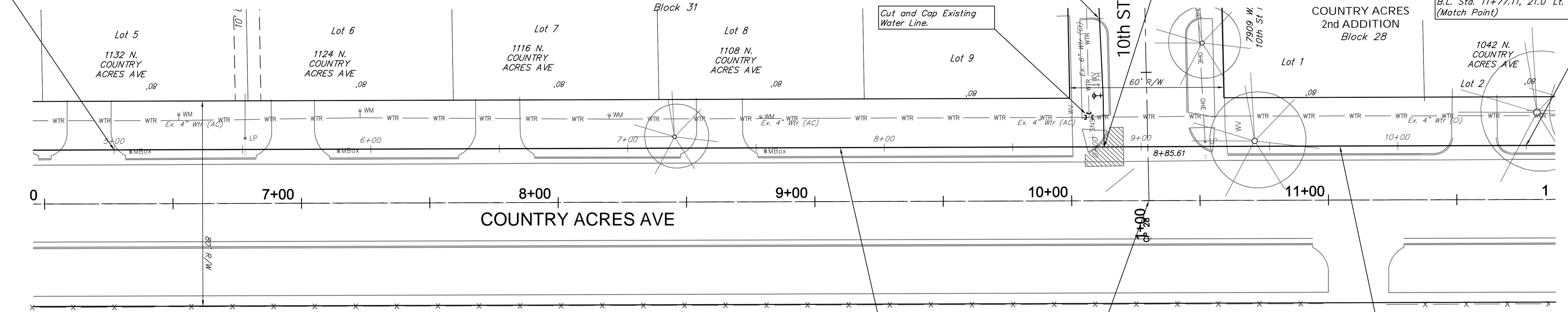


SCALE:
 HORIZONTAL: 1" = 20'
 VERTICAL: 1" = 5'

Sta. 5+00.00, Water Line 12A =
 B.L. Sta. 6+27.11, 21.0' Lt.
 (Match Point)

Sta. 8+85.61, Water Line 12A =
 Sta. 0+00.00, Water Line 8 =
 B.L. Sta. 10+12.73, 21.0' Lt.
 Install 1-8" X 8" CIMJ Tee (E)
 Install 3-8" Anchored Valve Assy.
 Valve Box Elev. = 1345.4

Sta. 10+50.00, Water Line 12A =
 B.L. Sta. 11+77.11, 21.0' Lt.
 (Match Point)



TYLER POINTE
 ADDITION
 NORTHWEST
 HIGH SCHOOL
 ADDITION

Install 385.61 L.F.
 8" Pipe.

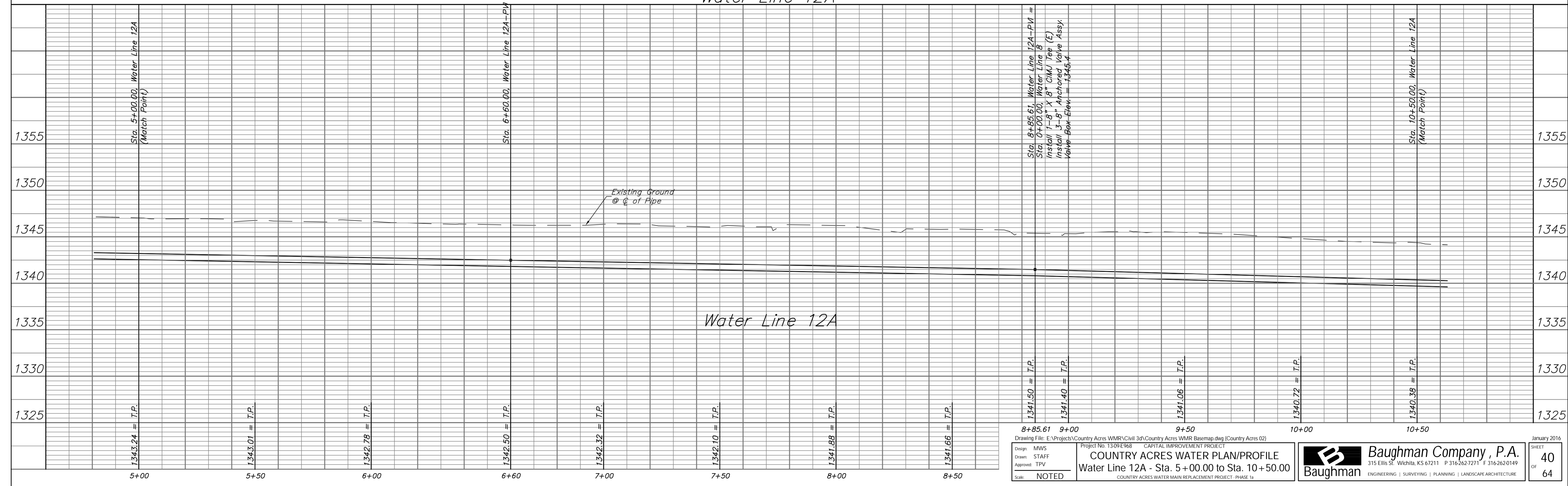
Water Line 12A & 12B B.L. Sta. 10+30.10 =
 Intersection of 10th St. and Country Acres.

Install 164.39 L.F.
 8" Pipe.

Location of Existing Line is Based on Record Information from the City. The Contractor Shall Excavate the Ex. Water and to Verify Size and Location PRIOR to Beginning Construction. This Work Shall be Considered SUBSIDIARY to the Water Line Installation.

Water Line 12A & 12B B.L. Sta. =
 Centerline of Country Acres.

Water Line 12A



Sta. 8+85.61, Water Line 12A-PVI =
 Sta. 0+00.00, Water Line 8
 Install 1-8" X 8" CIMJ Tee (E)
 Install 3-8" Anchored Valve Assy.
 Valve Box Elev. = 1345.4

Sta. 10+50.00, Water Line 12A
 (Match Point)