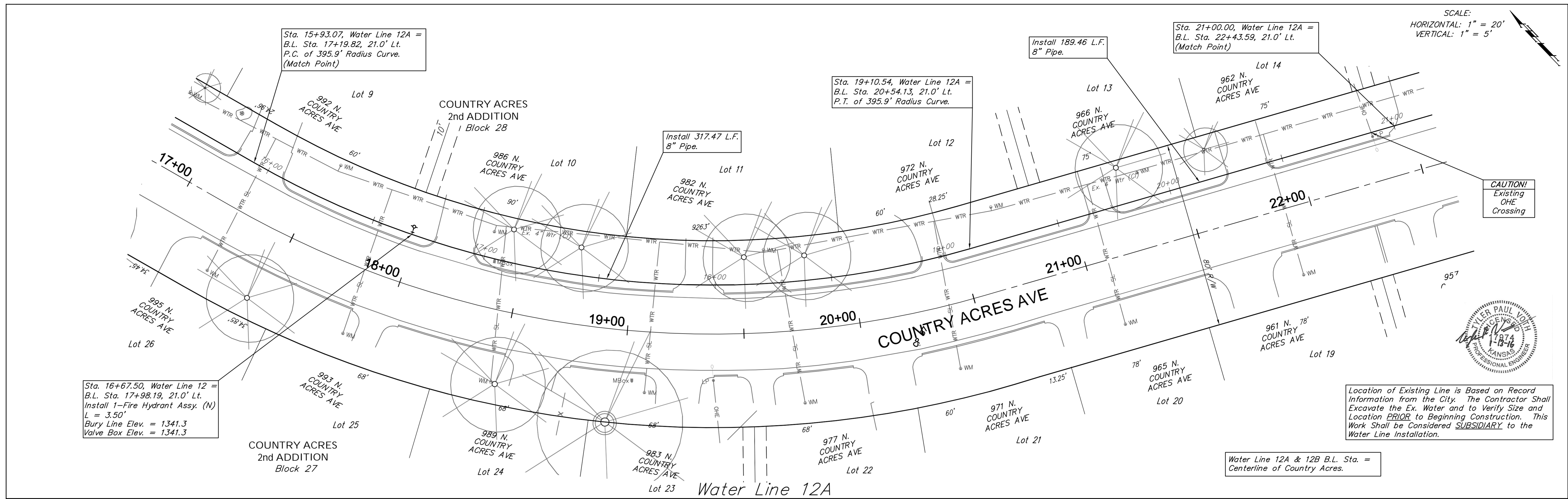
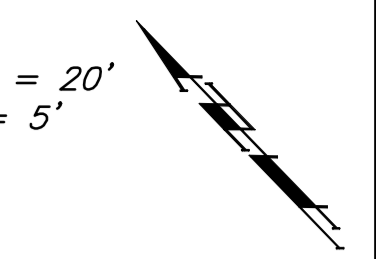
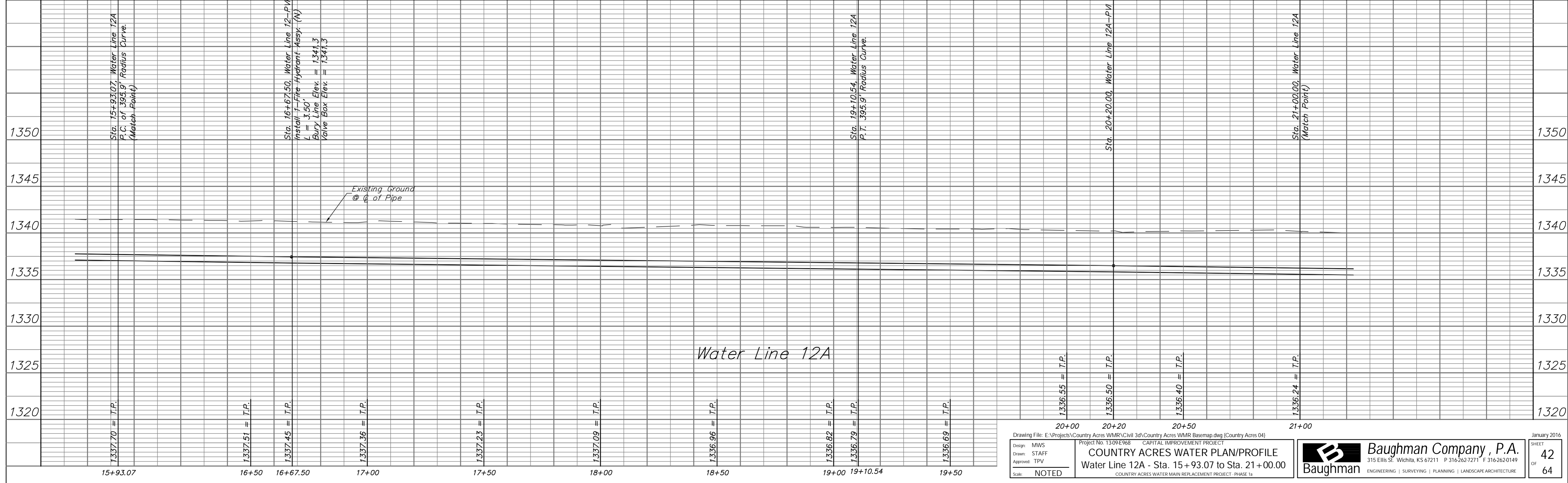


SCALE:  
HORIZONTAL: 1" = 20'  
VERTICAL: 1" = 5'



Location of Existing Line is Based on Record Information from the City. The Contractor Shall Excavate the Ex. Water and to Verify Size and Location PRIOR to Beginning Construction. This Work Shall be Considered SUBSIDIARY to the Water Line Installation.

Water Line 12A & 12B B.L. Sta. = Centerline of Country Acres.



Drawing File: E:\Projects\Country Acres WMR\Civil 3d\Country Acres WMR Base.dwg (Country Acres 04)  
Design: MWS  
Drawn: STAFF  
Approved: TPV  
Scale: NOTED  
Project No: 1309E968 CAPITAL IMPROVEMENT PROJECT  
COUNTRY ACRES WATER PLAN/PROFILE  
Water Line 12A - Sta. 15+93.07 to Sta. 21+00.00  
COUNTRY ACRES WATER MAIN REPLACEMENT PROJECT - PHASE 1a

**Baughman Company, P.A.**  
315 Ellis St., Wichita, KS 67211 P 316-262-7271 F 316-262-0149  
ENGINEERING | SURVEYING | PLANNING | LANDSCAPE ARCHITECTURE

January 2016  
SHEET 42 OF 64