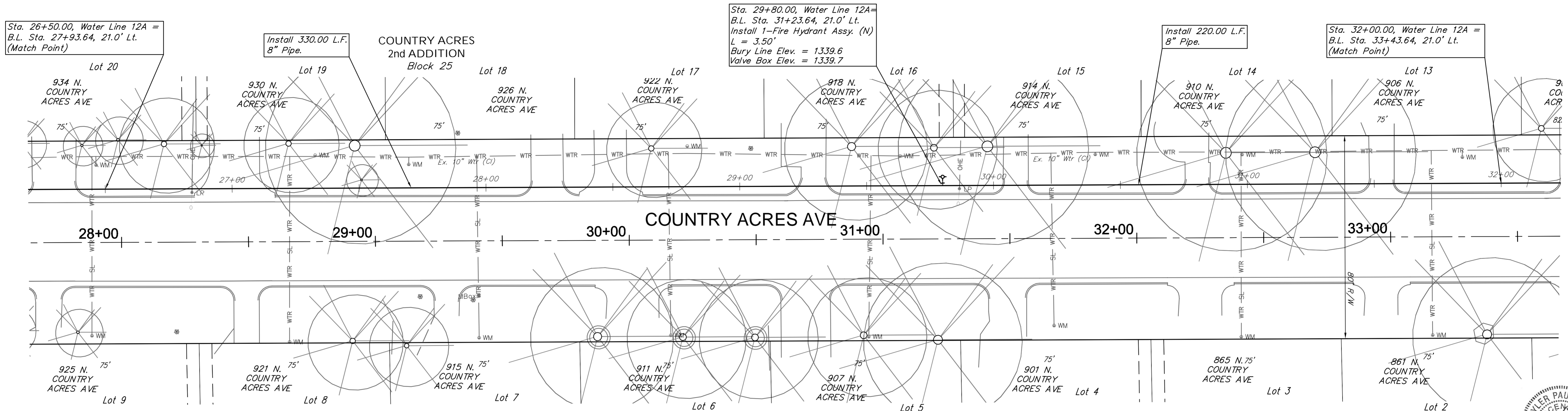
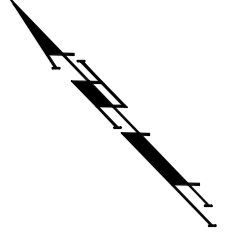


SCALE:  
 HORIZONTAL: 1" = 20'  
 VERTICAL: 1" = 5'



Sta. 26+50.00, Water Line 12A =  
 B.L. Sta. 27+93.64, 21.0' Lt.  
 (Match Point)

Install 330.00 L.F.  
 8" Pipe.

Sta. 29+80.00, Water Line 12A =  
 B.L. Sta. 31+23.64, 21.0' Lt.  
 Install 1-Fire Hydrant Assy. (N)  
 L = 3.50'  
 Bury Line Elev. = 1339.6  
 Valve Box Elev. = 1339.7

Install 220.00 L.F.  
 8" Pipe.

Sta. 32+00.00, Water Line 12A =  
 B.L. Sta. 33+43.64, 21.0' Lt.  
 (Match Point)

Water Line 12A & 12B B.L. Sta. =  
 Centerline of Country Acres.

Location of Existing Line is Based on Record  
 Information from the City. The Contractor Shall  
 Excavate the Ex. Water and to Verify Size and  
 Location PRIOR to Beginning Construction. This  
 Work Shall be Considered SUBSIDIARY to the  
 Water Line Installation.



Water Line 12A

COUNTRY ACRES  
 2nd ADDITION  
 Block 10

