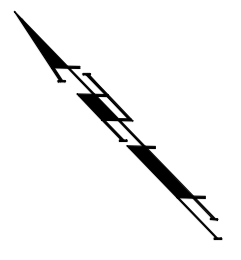


SCALE:
 HORIZONTAL: 1" = 20'
 VERTICAL: 1" = 5'



COUNTRY ACRES
 2nd ADDITION
 Block 25

Remove and Replace 11.1 S.Y.
 of Pavement, per Note 25 of
 Sheet 4, as Necessary for
 Construction.
 Cut and Cap Existing
 Water Line.

Sta. 32+00.00, Water Line 12A =
 B.L. Sta. 33+43.64, 21.0' Lt.
 (Match Point)

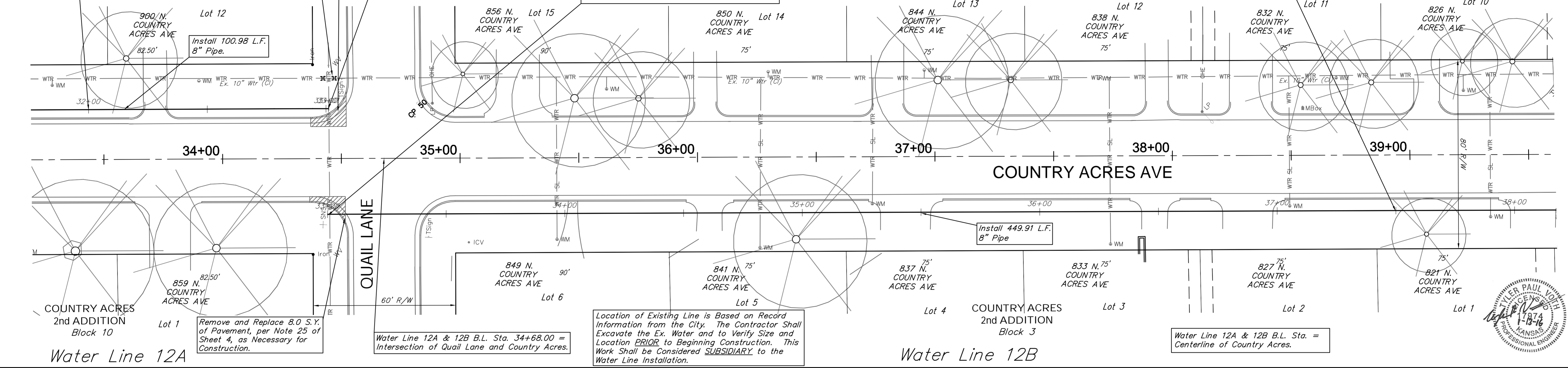
900' N.
 COUNTRY
 ACRES AVE
 82.50'
 Install 100.98 L.F.
 8" Pipe.

Sta. 33+00.98, Water Line 12A =
 B.L. Sta. 34+44.60, 21.0' Lt.
 Install 1-8" X 6" CIMJ Reducer
 Tap Ex. 6" Water Line.
 Install 1-6" X 6" Tapping Sleeve (NW) & 6"
 Tapping Valve with Valve Box to be
 Furnished & Installed by City of Wichita.
 Valve Box Elev. = 1340.7

Sta. 33+00.09, Water Line 12B =
 B.L. Sta. 34+44.11, 23.5' Lt.
 Install 1-8" X 6" CIMJ Reducer (NE)
 Tap Ex. 6" Water Line.
 Install 1-6" X 6" Tapping Sleeve (SE) & 6"
 Tapping Valve with Valve Box to be
 Furnished & Installed by City of Wichita.
 Valve Box Elev. = 1340.9

Sta. 37+50.00, Water Line 12B =
 B.L. Sta. 38+94.02, 23.5' Rt.
 (Match Point)

COUNTRY ACRES
 2nd ADDITION
 Block 26



Location of Existing Line is Based on Record
 Information from the City. The Contractor Shall
 Excavate the Ex. Water and to Verify Size and
 Location PRIOR to Beginning Construction. This
 Work Shall be Considered SUBSIDIARY to the
 Water Line Installation.

Water Line 12A & 12B B.L. Sta. =
 Centerline of Country Acres.

