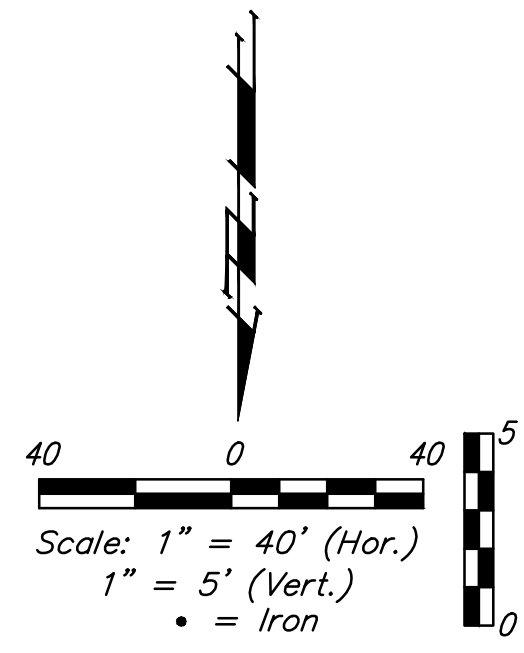
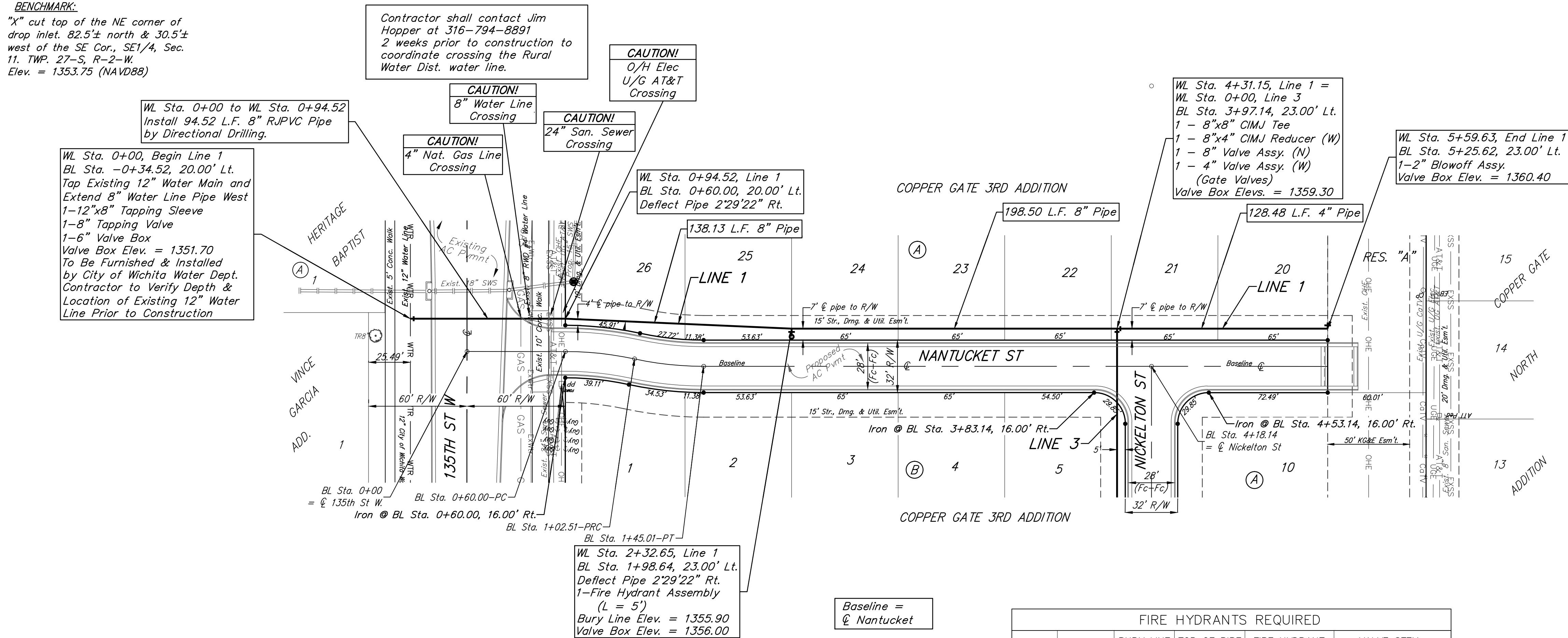
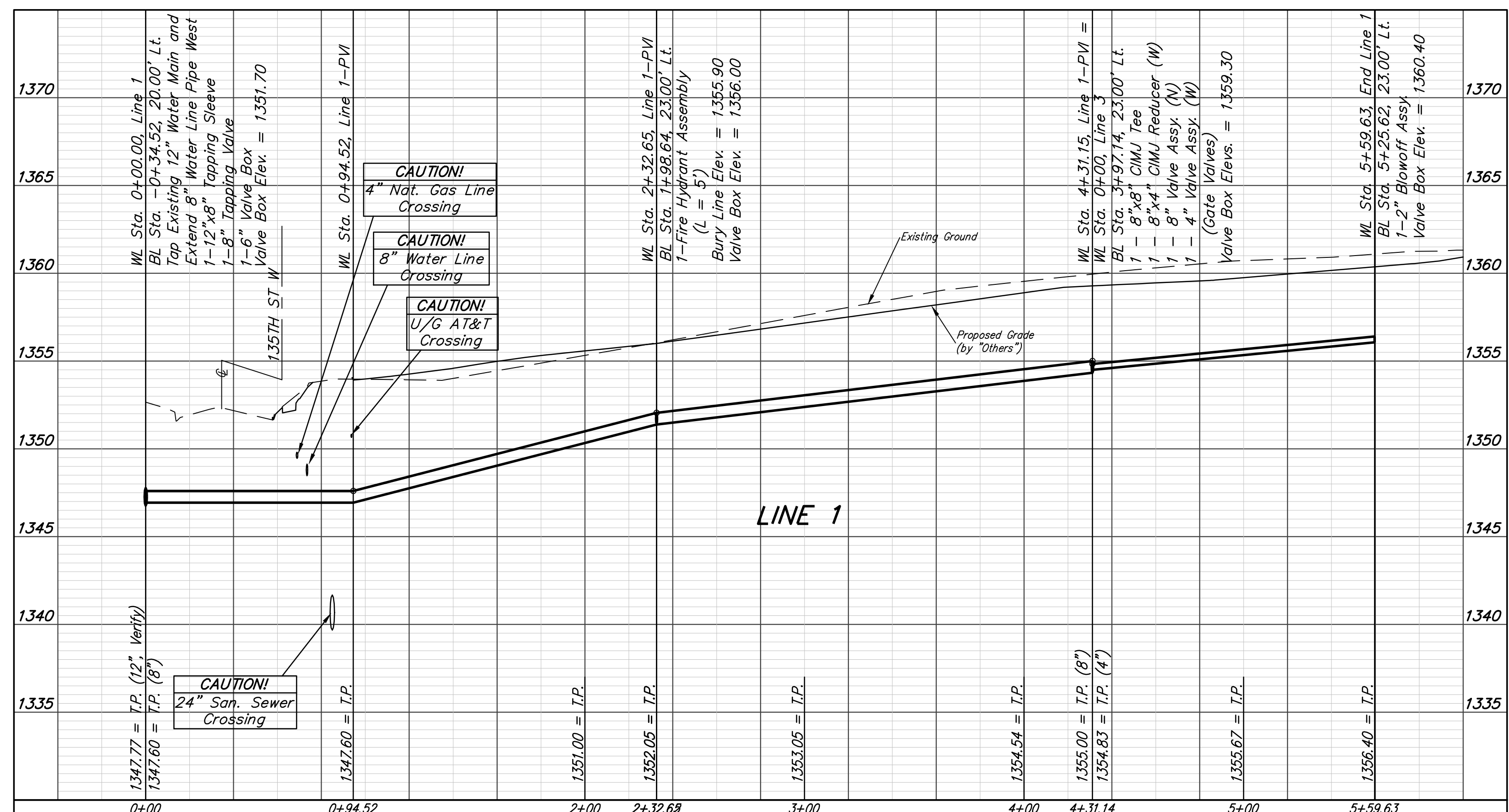


**BENCHMARK:**  
 "X" cut top of the NE corner of  
 drop inlet. 82.5'± north & 30.5'±  
 west of the SE Cor., SE 1/4, Sec.  
 11, TWP. 27-S, R-2-W.  
 Elev. = 1353.75 (NAVD88)



FIRE HYDRANTS REQUIRED					
LINE	STATION	BURY LINE ELEVATION	TOP OF PIPE ELEVATION	FIRE HYDRANT BURY REQUIRED*	VALVE STEM EXT. REQUIRED (ft)*
1	2+32.65	1355.90	1352.05	4.5'	-



**Baughman** Copper Gate 3rd Addition  
**LINE 1**  
 Water Distribution System

Baughman Company, P.A. 315 Ellis St. Wichita, KS 67211 P 316-262-7271 F 316-262-0149  
 ENGINEERING | SURVEYING | PLANNING | LANDSCAPE ARCHITECTURE

PROJECT NUMBER: 448-90708  
 DESIGN: AEG  
 DRAWN: JAK  
 APPROVED: [Signature]  
 DATE: 2/15/16

REVISIONS:

SCALE: Noted  
 SHEET: **4 OF 15**

E:\Projects\Copper Gate 3rd Addition\_Engineering\Wtr\_1510E321\WTR PLANS.dwg