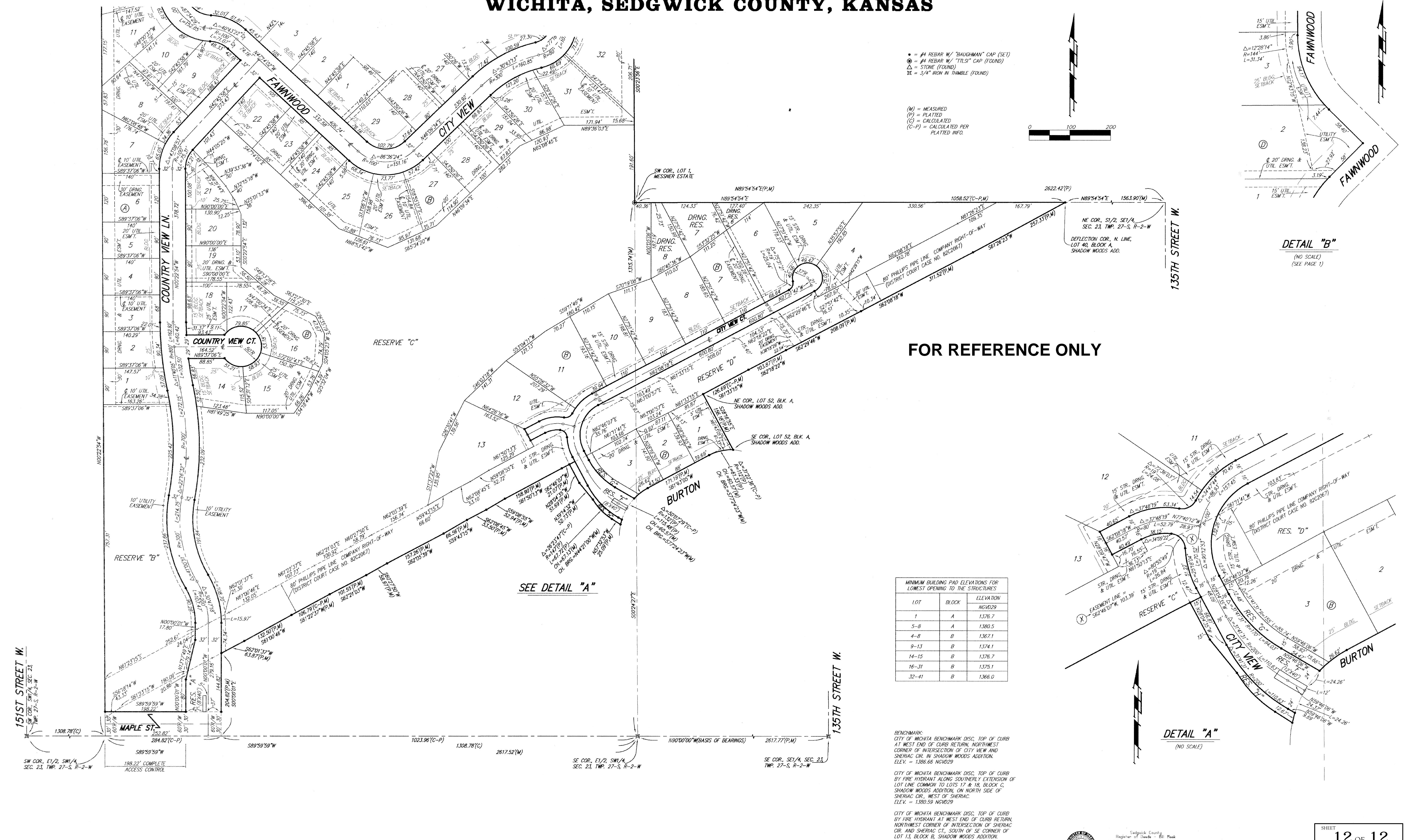
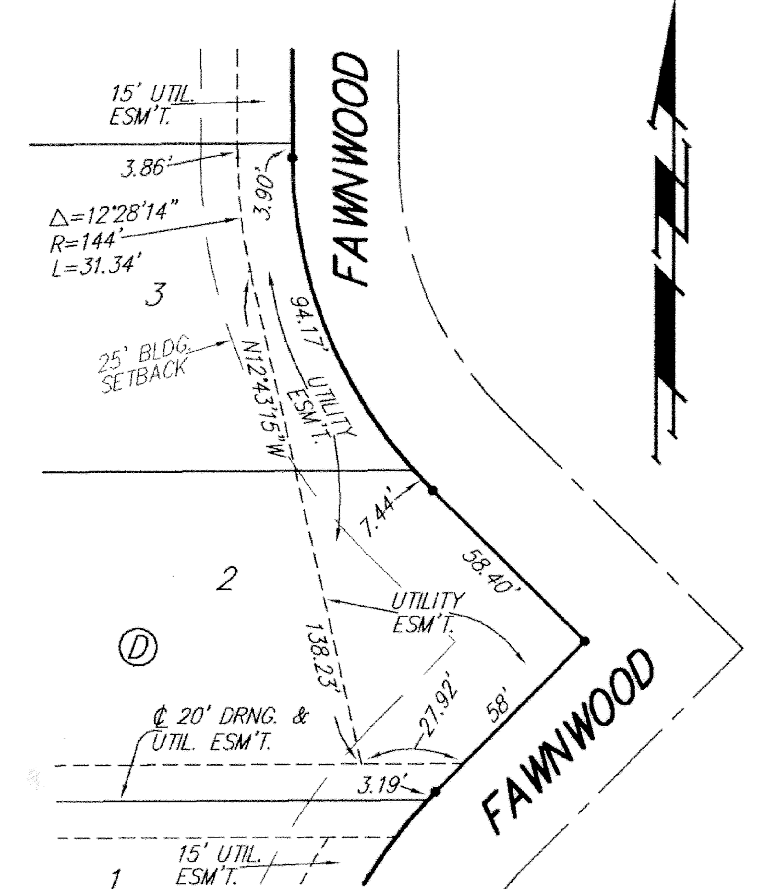
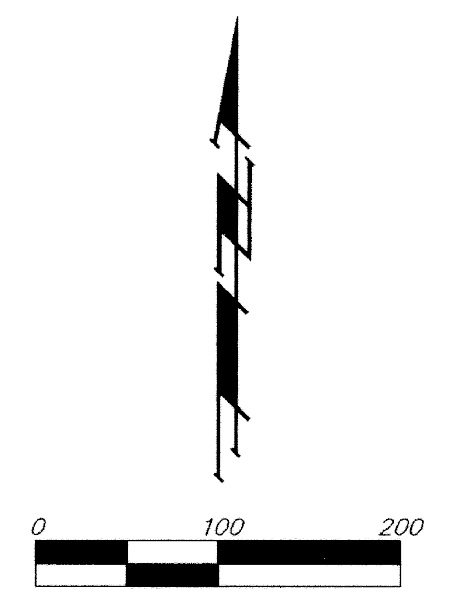


# THE WOODS ADDITION WICHITA, SEDGWICK COUNTY, KANSAS



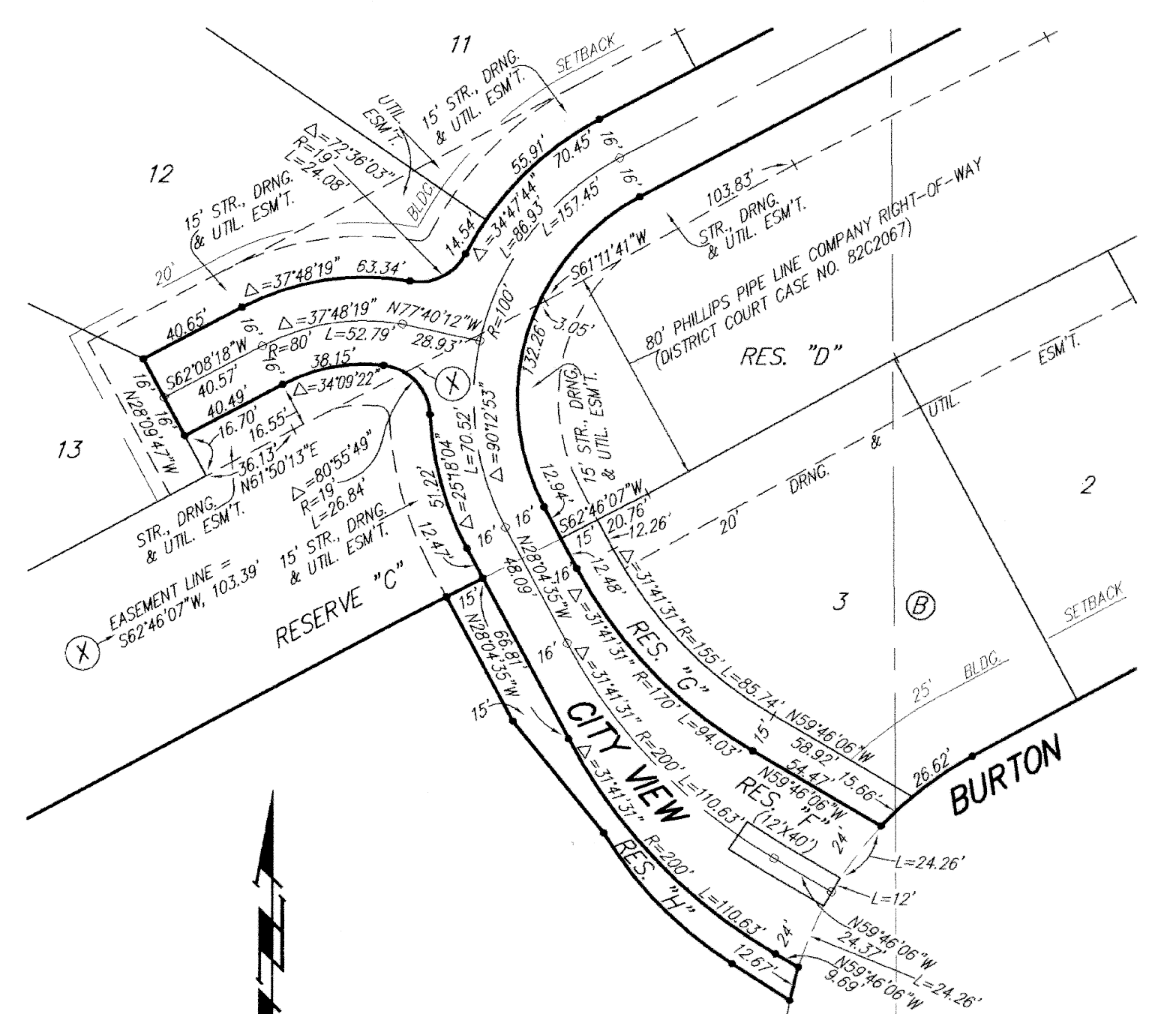
- = #4 REBAR W/ "DAUGHMAN" CAP (SET)
- ⊙ = #4 REBAR W/ "TILTS" CAP (FOUND)
- △ = STONE (FOUND)
- ⊞ = 3/4" IRON W/ THIMBLE (FOUND)

- (M) = MEASURED
- (P) = PLATTED
- (C) = CALCULATED
- (C-P) = CALCULATED PER PLATTED INFO.



**DETAIL "B"**  
(NO SCALE)  
(SEE PAGE 1)

**FOR REFERENCE ONLY**



**DETAIL "A"**  
(NO SCALE)

**SEE DETAIL "A"**

LOT	BLOCK	ELEVATION
1	A	1,376.7
5-8	A	1,380.5
4-8	B	1,367.1
9-13	B	1,374.1
14-15	B	1,376.7
16-31	B	1,375.1
32-41	B	1,366.0

**BENCHMARK:**  
CITY OF WICHITA BENCHMARK DISC, TOP OF CURB AT WEST END OF CURB RETURN, NORTHWEST CORNER OF INTERSECTION OF CITY VIEW AND SHERIAC CIR. IN SHADOW WOODS ADDITION. ELEV. = 1,386.66 NGVD29

**CITY OF WICHITA BENCHMARK DISC, TOP OF CURB BY FIRE HYDRANT ALONG SOUTHERLY EXTENSION OF LOT LINE COMMON TO LOTS 17 & 18, BLOCK C, SHADOW WOODS ADDITION, ON NORTH SIDE OF SHERIAC CIR., WEST OF SHERIAC. ELEV. = 1,380.59 NGVD29**

**CITY OF WICHITA BENCHMARK DISC, TOP OF CURB BY FIRE HYDRANT AT WEST END OF CURB RETURN, NORTHWEST CORNER OF INTERSECTION OF SHERIAC CIR. AND SHERIAC CT., SOUTH OF SE CORNER OF LOT 15, BLOCK B, SHADOW WOODS ADDITION. ELEV. = 1,392.11 NGVD29**

**NOTE:**  
A master grading plan for drainage has been developed for this subdivision and is on file with the City of Wichita, Kansas. All drainage easements, right-of-ways, or reserves shall remain at established grades or as modified with the approval of the City Engineer of the City of Wichita, Kansas. No obstructions which impede the flow of this drainage system shall be allowed.

Sedgwick County  
Register of Deeds - Map  
DOC # FLM-PG-28763861  
Recording Fee: \$4.00  
Date Recorded: 3/15/2006 9:02:14 AM

SHEET  
**12 OF 12**

**Baughman Company, P.A.**  
315 Ella St. Wichita, KS 67211 P 316-262-1419 F 316-262-0149  
LANDSCAPE ARCHITECTURE