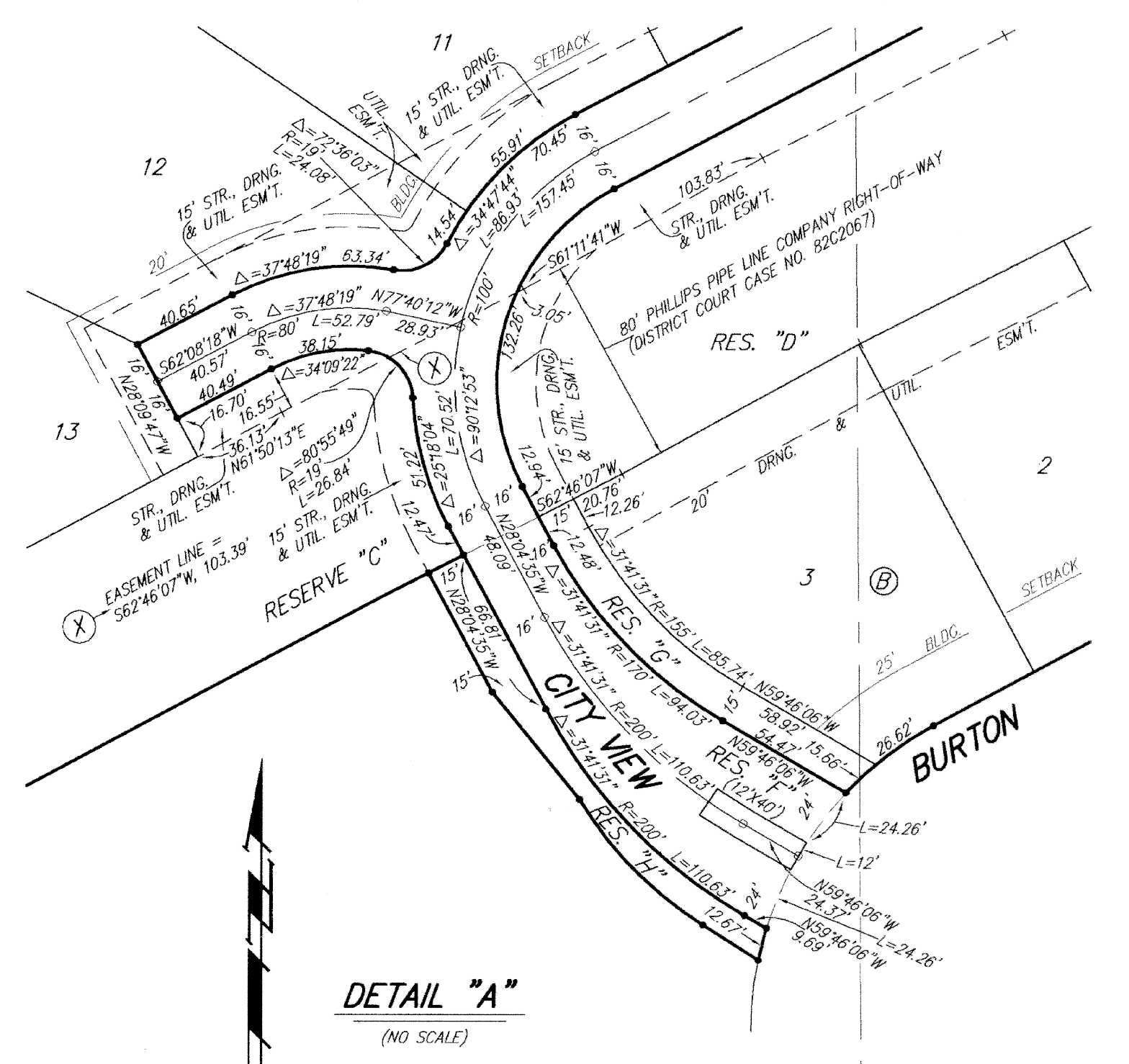
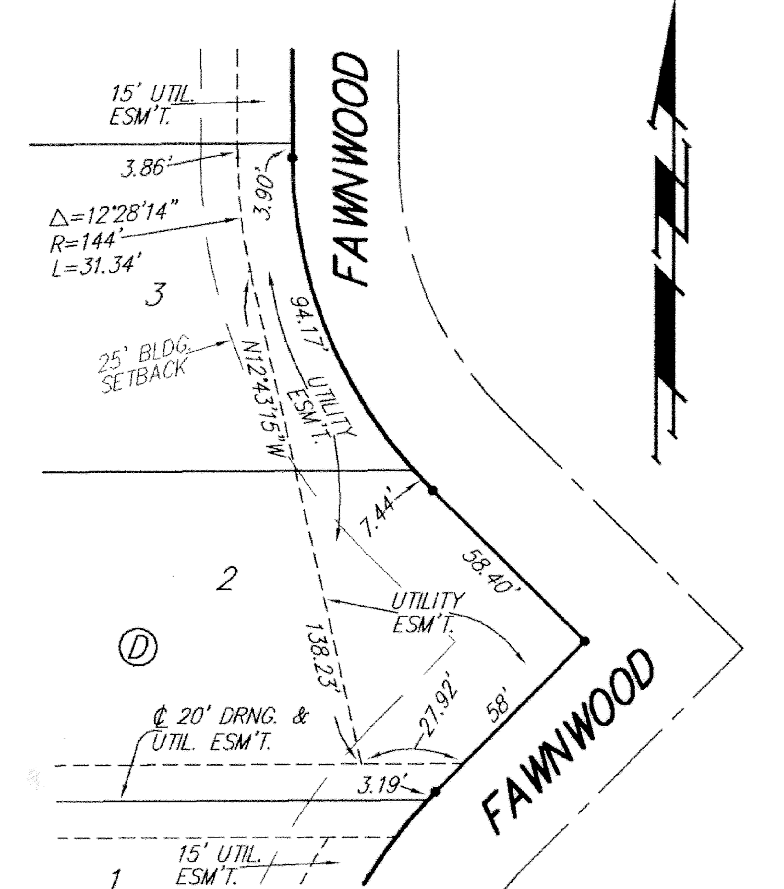
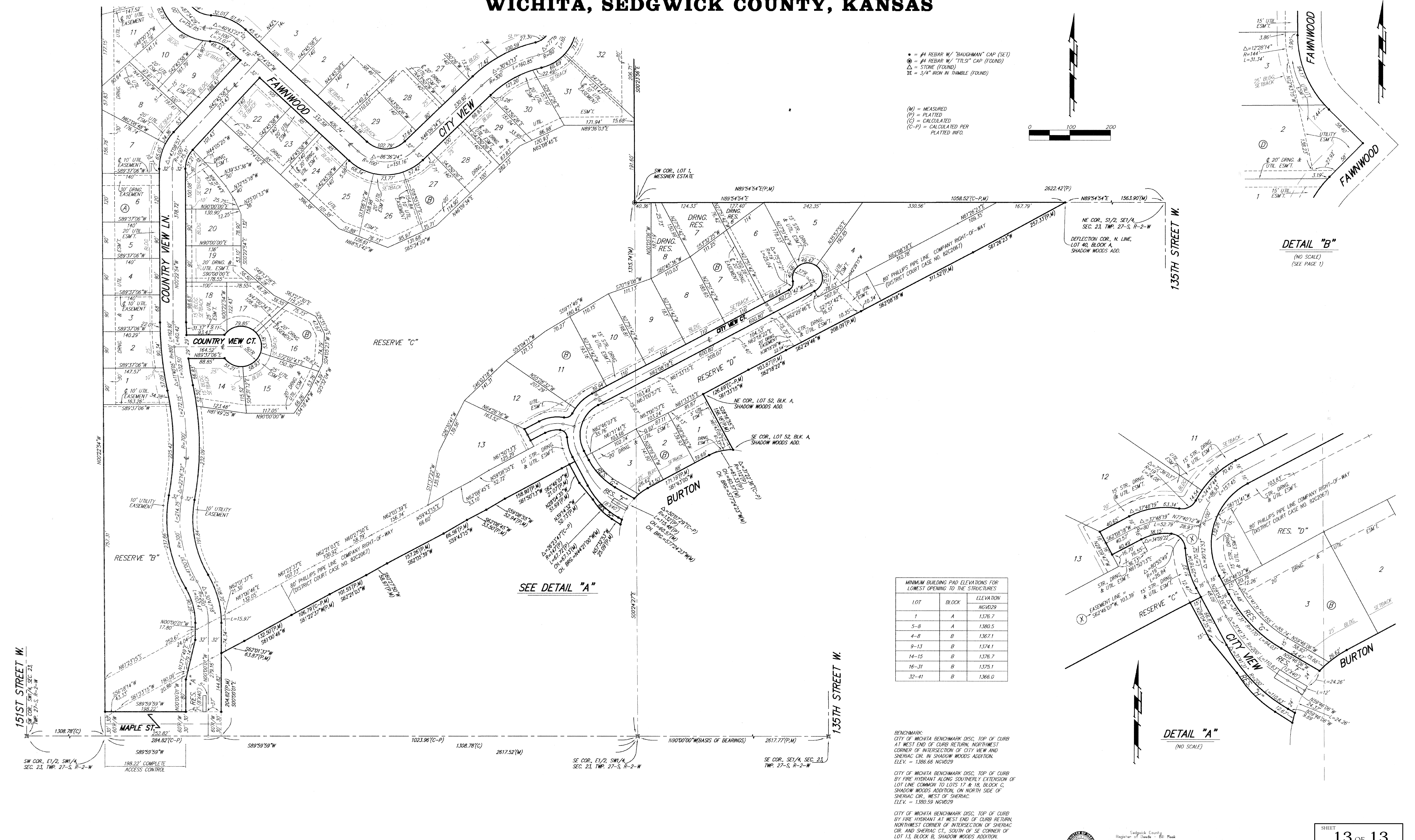


# THE WOODS ADDITION WICHITA, SEDGWICK COUNTY, KANSAS



MINIMUM BUILDING PAD ELEVATIONS FOR LOWEST OPENING TO THE STRUCTURES

LOT	BLOCK	ELEVATION
1	A	1376.7
5-8	A	1380.5
4-8	B	1367.1
9-13	B	1374.1
14-15	B	1376.7
16-31	B	1375.1
32-41	B	1366.0

BENCHMARK:  
 CITY OF WICHITA BENCHMARK DISC, TOP OF CURB  
 AT WEST END OF CURB RETURN, NORTHWEST  
 CORNER OF INTERSECTION OF CITY VIEW AND  
 SHERIAC CIR. IN SHADOW WOODS ADDITION.  
 ELEV. = 1386.66 NGVD29

CITY OF WICHITA BENCHMARK DISC, TOP OF CURB  
 BY FIRE HYDRANT ALONG SOUTHERLY EXTENSION OF  
 LOT LINE COMMON TO LOTS 17 & 18, BLOCK C,  
 SHADOW WOODS ADDITION, ON NORTH SIDE OF  
 SHERIAC CIR., WEST OF SHERIAC.  
 ELEV. = 1380.59 NGVD29

CITY OF WICHITA BENCHMARK DISC, TOP OF CURB  
 BY FIRE HYDRANT AT WEST END OF CURB RETURN,  
 NORTHWEST CORNER OF INTERSECTION OF SHERIAC  
 CIR. AND SHERIAC CT., SOUTH OF SE CORNER OF  
 LOT 15, BLOCK B, SHADOW WOODS ADDITION.  
 ELEV. = 1392.11 NGVD29

**NOTE:**  
 A master grading plan for drainage has been developed for this subdivision  
 and is on file with the City of Wichita, Kansas. All drainage easements,  
 right-of-ways, or reserves shall remain at established grades or as  
 modified with the approval of the City Engineer of the City of Wichita,  
 Kansas. No obstructions which impede the flow of this drainage system  
 shall be allowed.