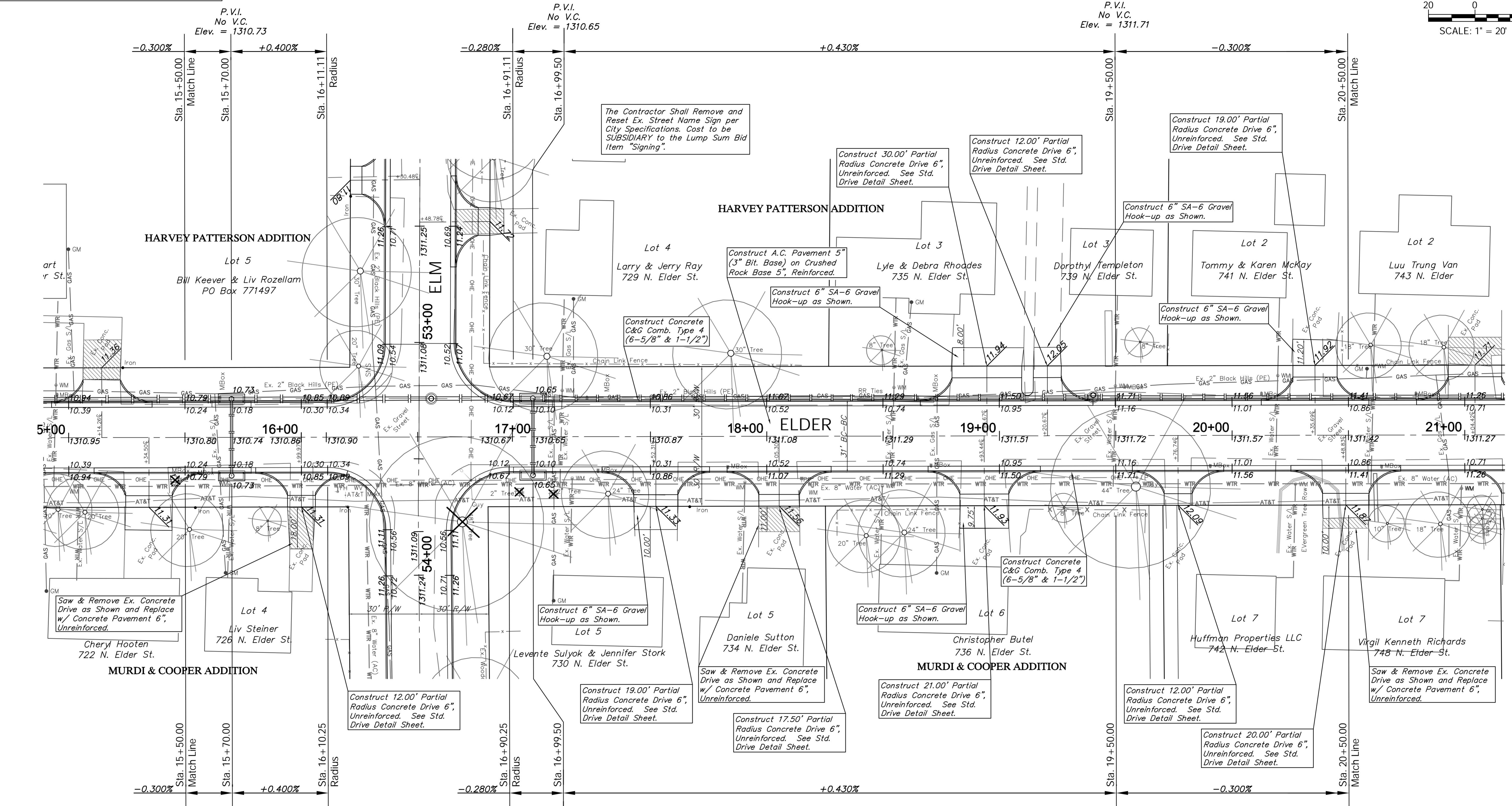
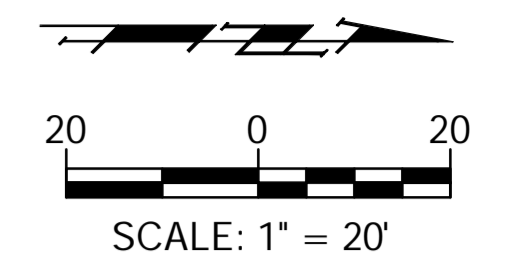


BENCHMARKS:
 BM #2 - Top Nut on the Fire Hydrant at the Southeast Corner of the Elder and Elm Intersection
 Elev. = 1314.60 (NAVD 88)



The Contractor Shall Remove and Reset Ex. Street Name Sign per City Specifications. Cost to be SUBSIDIARY to the Lump Sum Bid Item "Signing".

Construct 30.00' Partial Radius Concrete Drive 6", Unreinforced. See Std. Drive Detail Sheet.

Construct 12.00' Partial Radius Concrete Drive 6", Unreinforced. See Std. Drive Detail Sheet.

Construct 19.00' Partial Radius Concrete Drive 6", Unreinforced. See Std. Drive Detail Sheet.

Construct A.C. Pavement 5" (3" Bit. Base) on Crushed Rock Base 5", Reinforced.

Construct 6" SA-6 Gravel Hook-up as Shown.

Construct 6" SA-6 Gravel Hook-up as Shown.

Construct 6" SA-6 Gravel Hook-up as Shown.

Construct Concrete C&G Comb. Type 4 (6-5/8" & 1-1/2")

Construct Concrete C&G Comb. Type 4 (6-5/8" & 1-1/2")

Saw & Remove Ex. Concrete Drive as Shown and Replace w/ Concrete Pavement 6", Unreinforced.

Construct 6" SA-6 Gravel Hook-up as Shown.

Construct 6" SA-6 Gravel Hook-up as Shown.

Construct 12.00' Partial Radius Concrete Drive 6", Unreinforced. See Std. Drive Detail Sheet.

Construct 12.00' Partial Radius Concrete Drive 6", Unreinforced. See Std. Drive Detail Sheet.

Construct 19.00' Partial Radius Concrete Drive 6", Unreinforced. See Std. Drive Detail Sheet.

Construct 17.50' Partial Radius Concrete Drive 6", Unreinforced. See Std. Drive Detail Sheet.

Construct 21.00' Partial Radius Concrete Drive 6", Unreinforced. See Std. Drive Detail Sheet.

Construct 20.00' Partial Radius Concrete Drive 6", Unreinforced. See Std. Drive Detail Sheet.

Note:
 Pavement, Sidewalks, and Etc. To Be Removed Are Indicated By:

Note:
 Trees/Shrubs to be removed are marked thus:

Drawing File: E:\Projects\Elm & Elder\Civil 3d\Base Map.dwg (Par 02)
 Design: TPV
 Drawn: LP
 Approved: TPV
 Scale: Noted

Project No. 15-07-E267 CAPITAL IMPROVEMENT PROJECT
ELDER STREET PAVING
 Sta. 15+50.00 to Sta. 20+50.00
 ELM AND ELDER PAVING PROJECT

Baughman Company, P.A.
 315 Ellis St., Wichita, KS 67211 P 316.262.7271 F 316.262.0149
 ENGINEERING | SURVEYING | PLANNING | LANDSCAPE ARCHITECTURE

March 2016
 SHEET
 8
 OF
 30