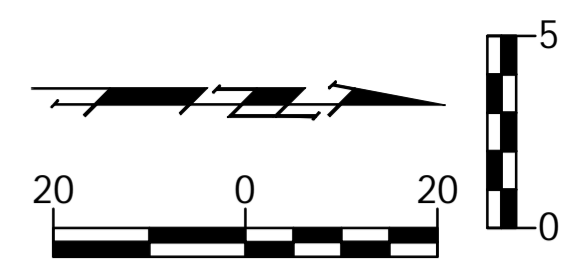


BENCHMARKS:
 BM #2 - Top Nut on the Fire Hydrant at the Southeast Corner of the Elder and Elm Intersection
 Elev. = 1314.60 (NAVD 88)



SCALE:
 1" = 20' Horizontal
 1" = 5' Vertical

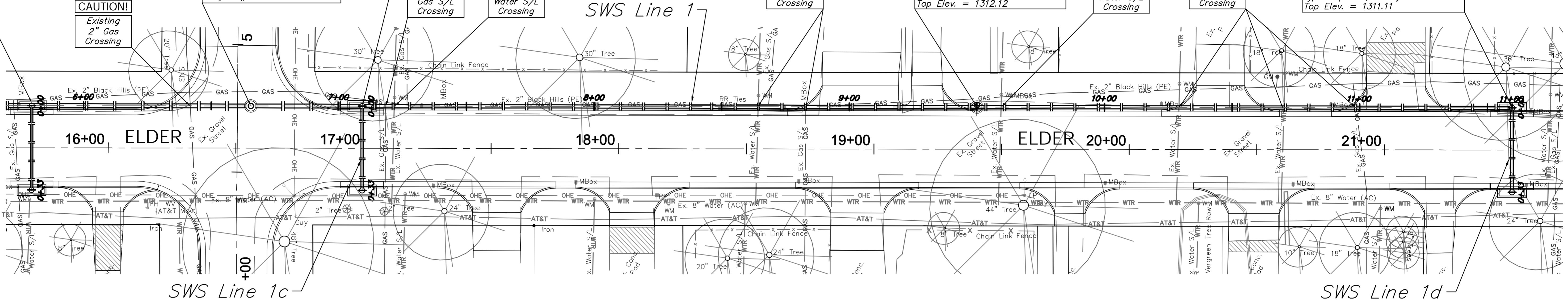
Sta. 5+79.69, SWS Line 1 =
 Sta. 0+00.00, SWS Line 1b =
 B.L. Sta. 15+70.00, 16.50' Lt.
 Match Point

Proposed SWS Manhole to be
 Constructed with Nahola
 Addition SWS Improvements,
 Project #468-85082

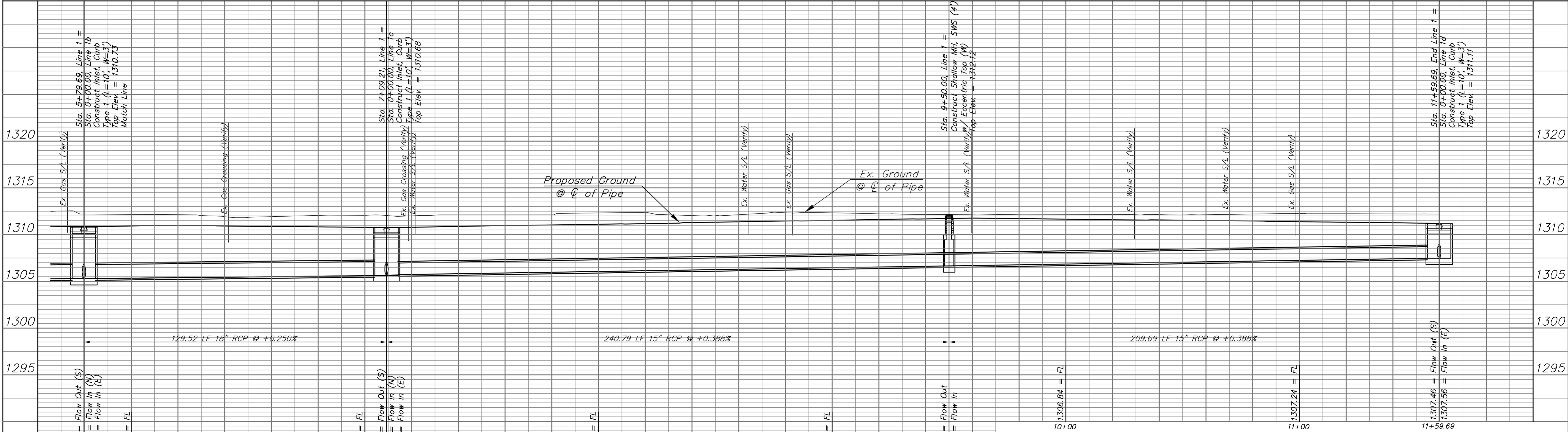
Sta. 7+09.21, SWS Line 1 =
 Sta. 0+00.00, SWS Line 1c =
 B.L. Sta. 16+99.50, 16.50' Lt.
 Construct Inlet, Curb
 Type 1 (L=10', W=3')
 Top Elev. = 1310.68

Sta. 9+50.00, SWS Line 1 =
 B.L. Sta. 19+40.30, 16.50' Lt.
 Construct Shallow MH, SWS (4')
 w/ Eccentric Top (W)
 Top Elev. = 1312.12

Sta. 11+59.69, End SWS Line 1 =
 Sta. 0+00.00, SWS Line 1d =
 B.L. Sta. 21+50.00, 16.50' Lt.
 Construct Inlet, Curb
 Type 1 (L=10', W=3')
 Top Elev. = 1311.11



SWS Line 1



Design: TPV
 Drawn: LP
 Approved: TPV
 Scale: Noted

Drawing File: E:\Projects\Elm & Elder\Civil 3d\Base_Map.dwg [SWS 02]
 Project No. 15-07-E267 CAPITAL IMPROVEMENT PROJECT
ELDER STREET SWS PLAN/PROFILE
 SWS Line 1, Sta. 5+79.69 to Sta. 11+59.69
 ELM AND ELDER PAVING PROJECT

Baughman Company, P.A.
 315 Ellis St., Wichita, KS 67211 P 316.262.7271 F 316.262.0149
 ENGINEERING | SURVEYING | PLANNING | LANDSCAPE ARCHITECTURE

March 2016
 SHEET
13
 OF
30