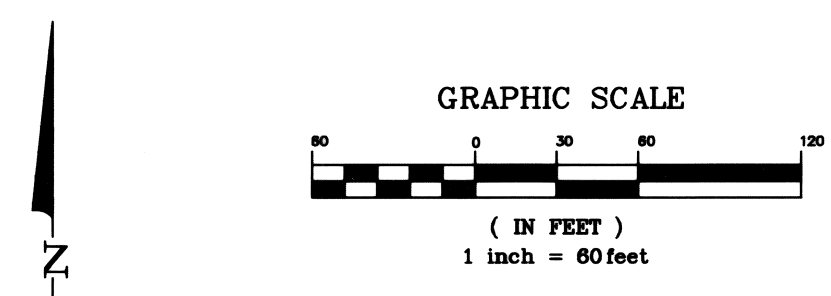
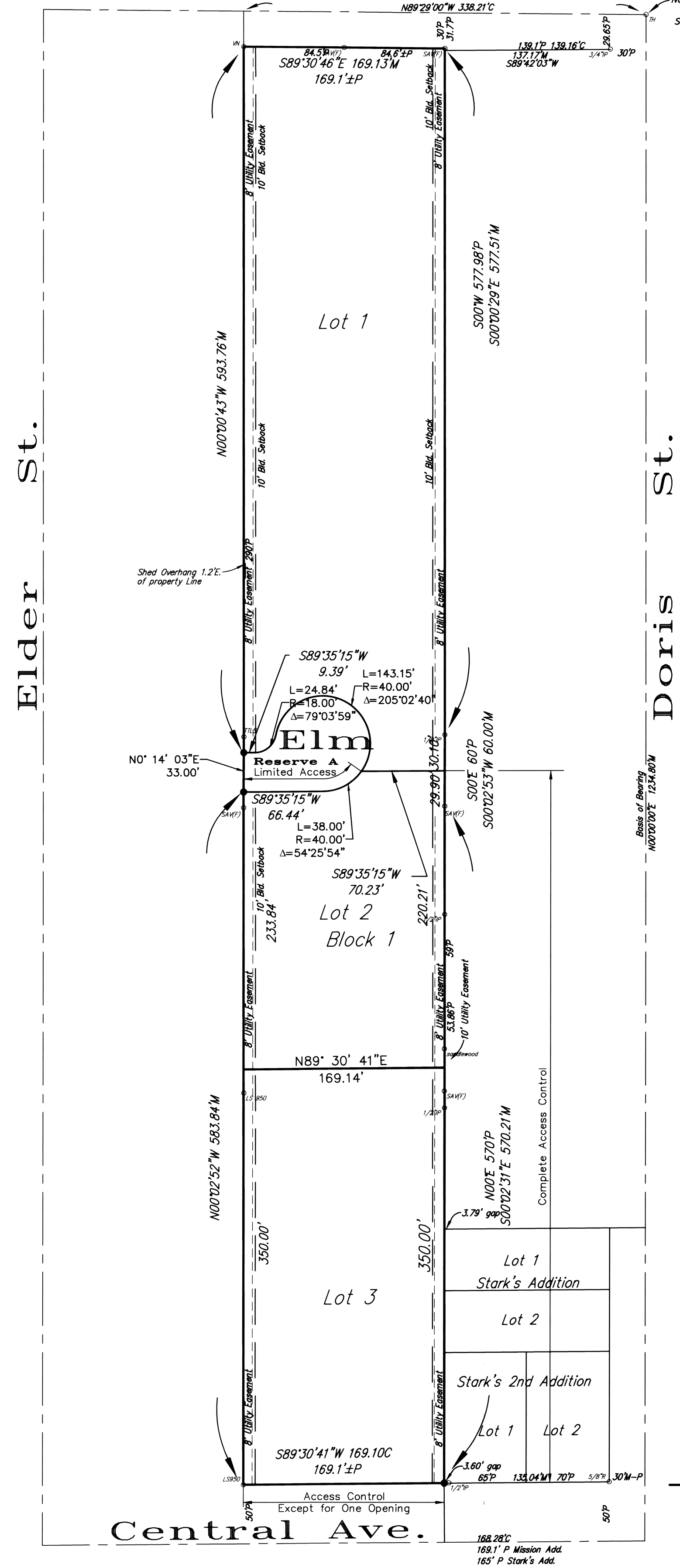
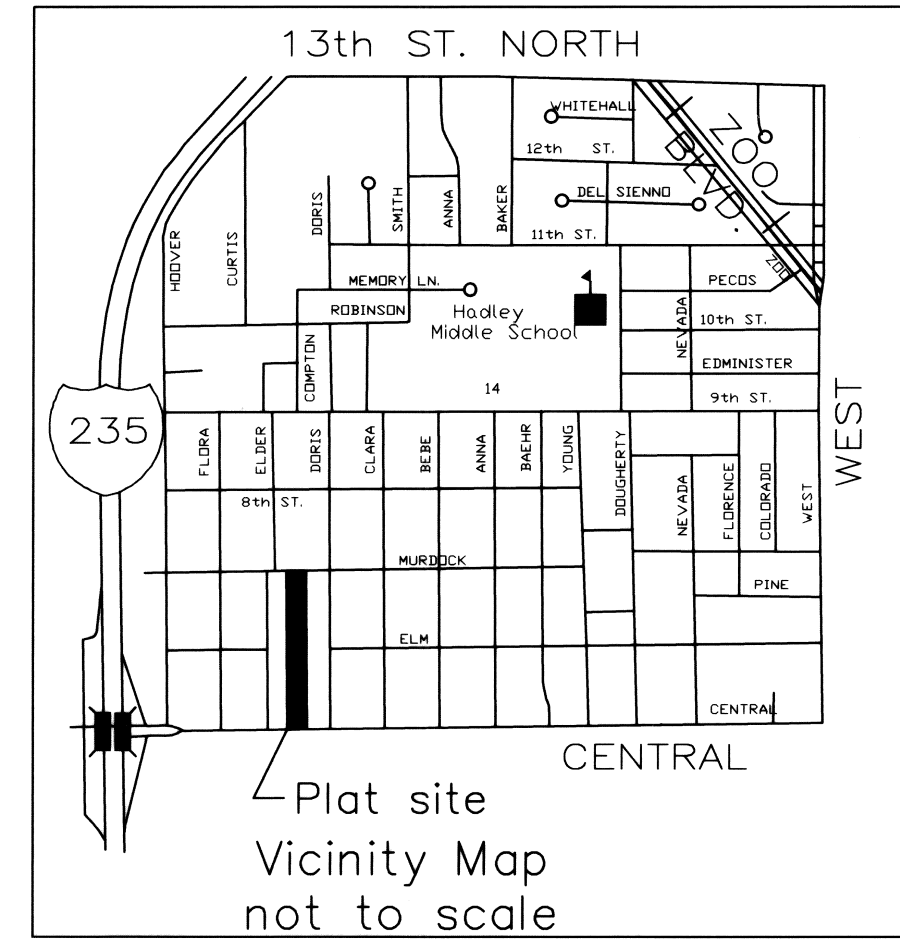


Murdock Ave.

ONE STEP FINAL PLAT OF NAHOLA ADDITION WICHITA, SEDGWICK COUNTY, KANSAS



- LEGEND: P = Plotted, M = Measured, C = Calculated, D = Described, etc. Includes symbols for various utilities like gas, water, and electric.

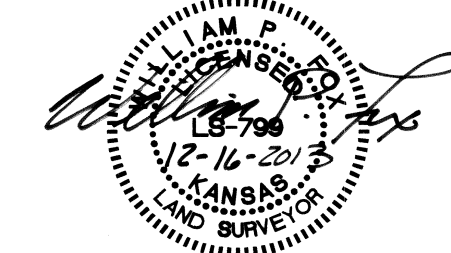


State of Kansas Sedgwick County) SS I, the undersigned Licensed Land Surveyor in aforesaid county and state, do hereby certify that, under the supervision of the undersigned, we, Poe & Associates, Inc., have surveyed and platted 'NAHOLA ADDITION', Wichita, Sedgwick County, Kansas and that the accompanying plat is a true and correct exhibit of the property surveyed, described as follows:

All of Lots 1, 2, 3 and 4, Block 1, and, Lot 1, Block 2, and the Elm street right-of-way, all in Mission Addition to Wichita, Kansas.

Existing public dedications, rights-of-way, and easements being vacated by virtue of 'K.S.A. 12-512b', as amended.

William P. Fox, L.S. #798 Surveyor William P. Fox, L.S. #798 Poe & Associates, Inc.



State of Kansas Sedgwick County) SS Know all men by these presents that we, the undersigned, have caused the land described in the surveyor's certificate to be replatted into Lots a Block and a Reserve to be known as 'NAHOLA ADDITION', Wichita, Sedgwick County, Kansas. Utility easements are hereby granted as indicated for constructing, maintaining, operating and repairing utilities. Reserve A is for private street, emergency access and drainage purposes. A permanent easement for ingress and egress through normal traffic ways, as may be developed from time to time, by emergency service providers is hereby granted to the City of Wichita, Kansas, over and across Lots 1, 2 and 3, Block 1, Nahola Addition. Cross lot access for ingress and egress through normal traffic ways, as may be developed from time to time, shall be permitted across the common line between Lots 2 and 3, Block 1, Nahola Addition. Drainage plan has been developed for the plat. The drainage plan is on file with the City Stormwater Engineer. Reserve A, shall remain at established grades or as modified with the approval of the City Stormwater Engineer to allow the unobstructed conveyance of stormwater. Access openings shall be in accordance with minimum spacing requirements of the Wichita/Sedgwick County Access Management Standards unless otherwise noted. All abutters right of access to or from Central Avenue over and across the South line of Lot 3, Block 1, are hereby granted to the City of Wichita, Kansas. Nonresidential access to and from Lots 2 and 3, Block 1 to Elm Street over and across the North line of Lot 2, Block 1, shall not be permitted. All abutters right of access over and across the East line of Lots 2 and 3, Block 1, are hereby granted to the City of Wichita, Kansas.

Owner, Nancy J. Loescher Donaldson-Loescher Living Trust By, Nancy J. Loescher Title, Managing Member State of Kansas Sedgwick County) SS The foregoing instrument acknowledged before me, this 5 day of February 2014, by Nancy J. Loescher. My App't. Exp. 11/19/2016 State of Kansas Sedgwick County) SS The foregoing instrument acknowledged before me, this 5 day of February 2014, by Nancy J. Loescher, Managing Member, Donaldson-Loescher Living Trust. My App't. Exp. 11/19/2016 State of Kansas Sedgwick County) SS We, the undersigned holders of a mortgage on the above described property, do hereby consent to the plat of 'NAHOLA ADDITION', WICHITA, SEDGWICK COUNTY, KANSAS. My App't. Exp. 9/14/17

This plat of 'NAHOLA ADDITION', Wichita, Sedgwick County, Kansas has been submitted to and approved by the Wichita-Sedgwick County Metropolitan Area Planning Commission, Wichita, Kansas

Dated this 21st day of NOVEMBER, 2013.

Wichita-Sedgwick County Metropolitan Area Planning Commission

By Don Klausmeyer Chair

Attest John L. Schlegel Secretary



This plat approved and all dedications shown hereon, accepted by the City Council of the City of Wichita, Kansas, this 17th day of January, 2014

At the Direction of the City Council

Attest Carl Brewer Mayor Kagan Sublett City Clerk

Reviewed in accordance with K.S.A. 58-2005 this 15th day of February, 2013.

Deputy County Surveyor Sedgwick County Kansas

Entered on the transfer record this 3rd day of April, 2014

Kelly B. Arnold County Clerk

State of Kansas Sedgwick County) SS This is to certify that this plat has been filed for record in the office of the Register of Deeds, this 3rd day of March, 2013, at 03:52:43 o'clock P.M. and is duly recorded.

Register of Deeds

Deputy

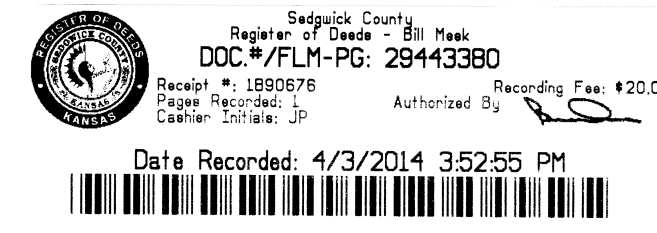


Table with 3 columns: Lot, Block, Elevation. Row 1: 1, 2 & 3, 1, 1313.60



POE & ASSOCIATES, INC. CONSULTING ENGINEERS 5940 E. Central, Suite 200 Wichita, KS 67208-4242 Phone 316/685-4114 FAX 316/685-4444 F:\APPS\DCA\101986\Plat.dwg Plot Date: 12/16/2013

Vertical sidebar containing project information: PROJECT NO. G14D0066, DESIGNER SRS, DRAWN BY EAM, SHEET 0066WDET, REV 13, and a table for REV DATE DESCRIPTION.