

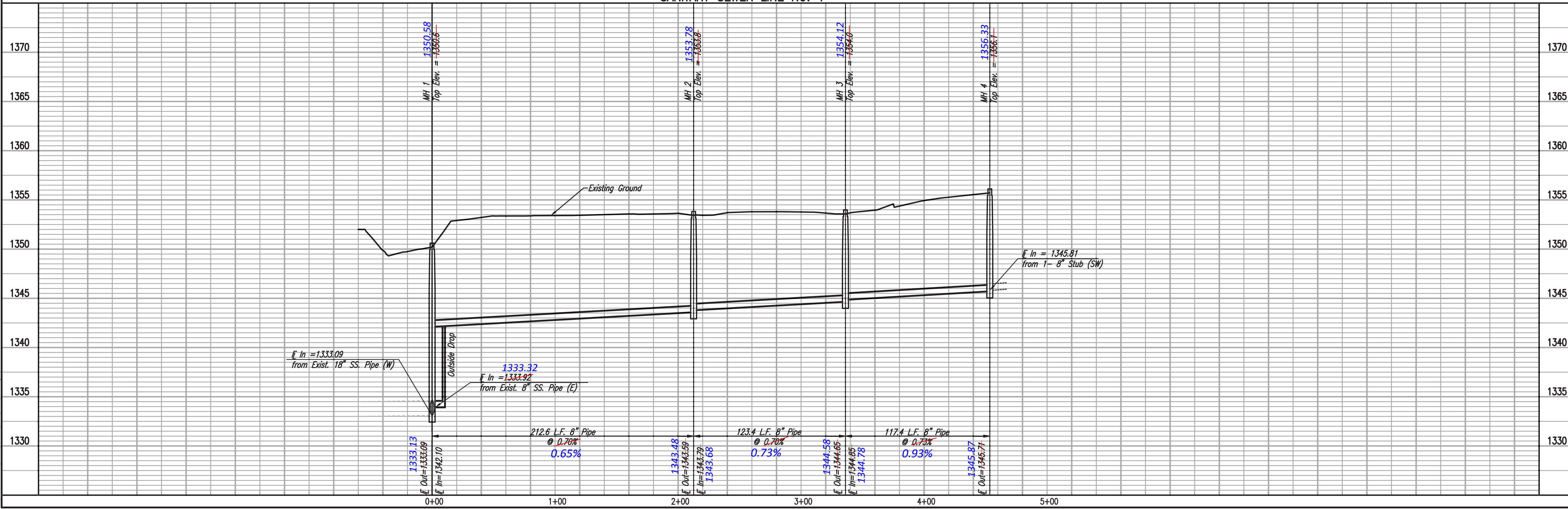




PLAN	CHECKED	DATE
	CHECKED	

PROFILE	CHECKED	DATE
	CHECKED	

Saved: 08-04-2015 4:03:30 PM by CSI  
 Plot Scale: 1" = 10'-0" (1:120)  
 U:\Projects-Civil\2015\15120\003\Drawings\15120-003-SANITARY SEWER LINE NO 1



N: 26,531.5429, E: 18,494.1584  
 Sta. 0+00.0 \*  
 Construct MH 1 over existing 18" pipe.  
 Remove top half of 18" pipe thru MH.  
 Standard Outside Drop MH with  
 Specialized Interior Coating.  
 Shape invert to provide smooth flow.

SS MH #4  
 CONC. PRECAST  
 TOP 1353.25  
 18" PVC (S) FL 1332.80  
 18" PVC (W) FL 1332.89

SS MH #5  
 CONC. PRECAST  
 TOP 1353.58  
 18" PVC (E) FL 1333.33  
 18" PVC (W) FL 1333.38  
 8" PVC (S) FL 1334.20  
 8" PVC (S) FL 1341.24

Install 1- 8" Stub and Plug,  
 Proposed 8" Sanitary Sewer Service Line  
 (by others)

Install 212.6 L.F.  
 8" Pipe

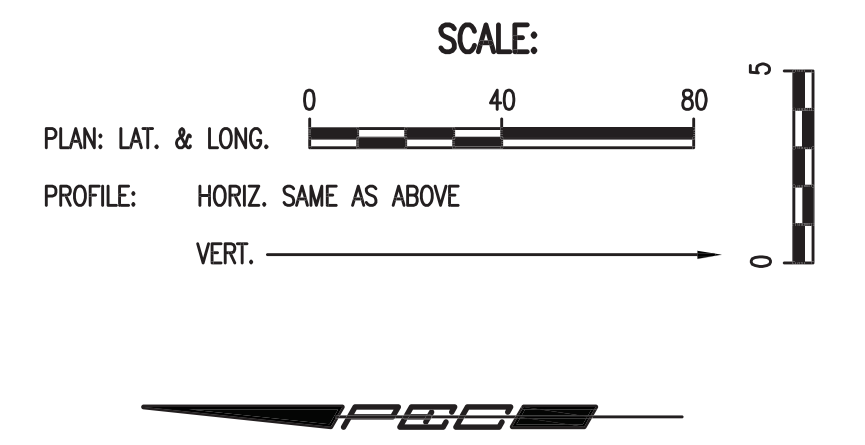
Install 123.4 L.F.  
 8" Pipe

Install 117.4 L.F.  
 8" Pipe

N: 26,318.9545, E: 18,496.9290  
 Sta. 2+12.6  
 Const. MH 2  
 Standard MH

N: 26,230.3634, E: 18,410.9907  
 Sta. 3+36.0  
 Const. MH 3  
 Standard MH

N: 26,228.3255, E: 18,293.6414  
 Sta. 4+53.4  
 Const. MH 4  
 Standard MH

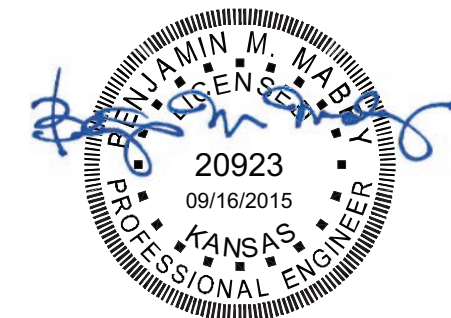


\* PRIOR TO BEGINNING CONSTRUCTION, THE CONTRACTOR SHALL EXCAVATE THE EXISTING 18" PVC PIPE AT SANITARY SEWER STATION 0+00.0 TO VERIFY ITS HORIZONTAL AND VERTICAL LOCATION. THE PIPE LOCATION SHALL BE REPORTED TO THE ENGINEER SO THAT ANY NECESSARY PLAN MODIFICATIONS CAN BE MADE. ANY ADDITIONAL LABOR OR MATERIALS NECESSARY TO COMPLETE THE CONNECTION SHALL BE CONSIDERED SUBSIDIARY TO THE PROJECT.

ALL INSIDE SURFACES OF MH 1 WHICH WOULD BE EXPOSED TO SEWER GAS SHALL BE COATED WITH A CITY APPROVED EPOXY COATING SYSTEM SUCH AS RAVEN 405 ULTRA HIGH BUILD EPOXY COATING, SAUERISEN SEWERGARD 210S, ZEBRON, OR AN APPROVED EQUAL. PRODUCTS SHALL BE APPLIED AT A MINIMUM THICKNESS OF 90 MILS, OR TO THE MINIMUM THICKNESS REQUIRED BY THE MANUFACTURER'S SPECIFICATIONS, WHICHEVER IS THICKER. PLASTIC LINING OF THE MANHOLE WILL NOT BE ALLOWED.

THE INSIDE SURFACES OF ALL OTHER MANHOLES CONSTRUCTED UNDER THIS PROJECT, WHICH WOULD BE EXPOSED TO SEWER GAS, SHALL BE COATED PER SECTION 804.4 OF STANDARD SPECIFICATIONS.

ALL WORK AND MATERIALS NECESSARY TO COMPLETE THIS WORK SHALL BE CONSIDERED SUBSIDIARY TO THE UNIT PRICE BID FOR THE "4" DIAMETER TYPE P.MH WITH INTERIOR COATING".



LATERAL 24, MAIN 7  
 OF THE NORTHWEST INTERCEPTOR SEWER  
**SANITARY SEWER LINE NO. 1**  
 GARY JANZEN, P.E. - CITY ENGINEER  
 CITY OF WICHITA PROJECT NO. 468-85039

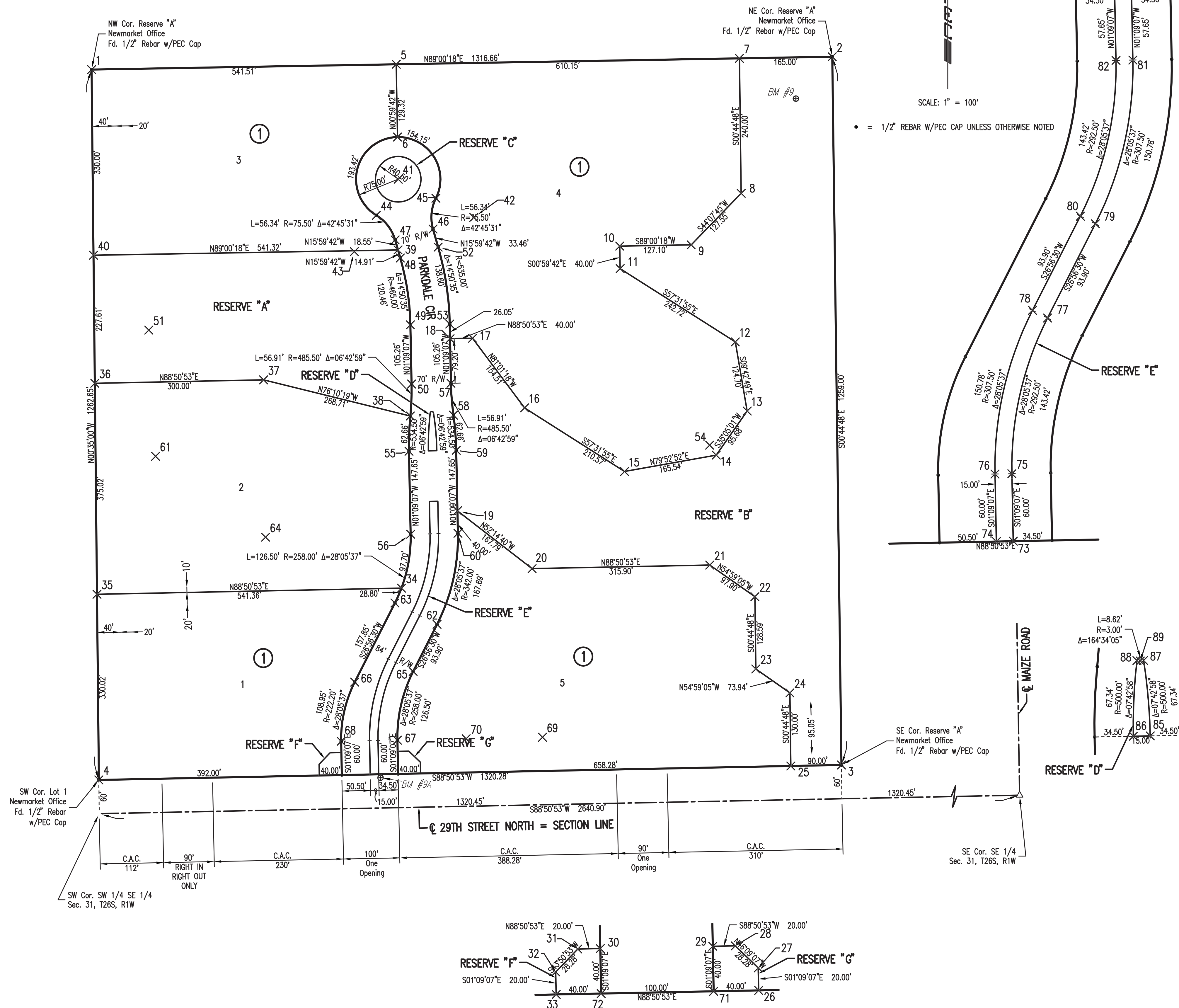
PROFESSIONAL ENGINEERING CONSULTANTS P.A.  
 303 SOUTH TOPEKA WICHITA, KS 67202  
 316-262-2691 www.pec1.com

Designed By: MDK, SAD  
 Drawn By: GLM

Job No.: 35-15120-3-042  
 Date: March 2015

# NEWMARKET OFFICE 2ND

## AN ADDITION TO WICHITA, SEDGWICK COUNTY, KANSAS

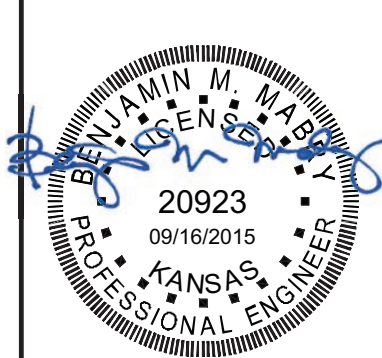


COORDINATE LIST		
POINT	NORTH	EAST
1	26,536.9408	17,347.3451
2	26,559.8029	18,663.8045
3	25,300.9066	18,680.2112
4	25,274.3632	17,360.1985
5	26,546.3434	17,888.7725
6	26,417.0444	17,891.0180
7	26,556.9379	18,498.8279
8	26,316.9551	18,501.9555
9	26,225.4000	18,413.1419
10	26,223.1930	18,286.0572
11	26,183.1991	18,286.7517
12	26,052.8978	18,491.5366
13	25,929.9894	18,512.5758
14	25,851.6961	18,457.5836
15	25,822.6124	18,294.6204
16	25,935.6503	18,116.9670
17	26,059.4055	18,024.4603
18	26,058.6013	17,984.4684
19	25,752.6578	17,997.6218
20	25,649.9212	18,130.2811
21	25,656.2722	18,446.1186
22	25,600.0969	18,526.2993
23	25,471.5168	18,527.9750
24	25,429.0894	18,588.5330
25	25,299.0972	18,590.2272
26	25,285.8629	17,932.0829
27	25,305.8589	17,931.6808
28	25,325.4528	17,911.2827
29	25,325.0507	17,891.2868
30	25,323.0402	17,791.3070
31	25,322.6382	17,771.3110
32	25,302.2401	17,751.7172
33	25,282.2442	17,752.1193
34	25,615.2460	17,898.0852
35	25,604.3624	17,356.8390
36	25,979.3614	17,353.0214
37	25,985.3927	17,652.9608
38	25,921.1685	17,913.8853
39	26,216.3570	17,891.9422
40	26,206.9576	17,350.7044
41	26,342.0557	17,892.3203
42	26,274.2835	18,026.6973
43	26,213.3865	17,814.2531
44	26,277.9349	17,853.4163
45	26,308.2822	17,959.2856

COORDINATE LIST		
POINT	NORTH	EAST
46	26,253.4794	17,954.1202
47	26,234.1907	17,886.8302
48	26,202.0237	17,896.0508
49	26,083.2405	17,913.9588
50	25,978.0055	17,916.0749
51	26,073.8919	17,449.0528
52	26,221.3123	17,963.3409
53	26,084.6478	17,983.9446
54	25,869.3409	18,445.8666
55	25,858.5951	17,911.4746
56	25,710.9771	17,914.4430
57	25,979.4128	17,986.0608
58	25,922.7097	17,990.5335
59	25,860.2839	17,995.4577
60	25,712.6659	17,998.4260
61	25,849.5381	17,461.0657
62	25,550.8354	17,961.3771
63	25,588.8944	17,886.4938
64	25,705.7902	17,656.4951
65	25,467.1293	17,918.8339
66	25,448.1793	17,814.9760
67	25,345.0466	17,890.8847
68	25,344.0515	17,841.3947
69	25,350.2336	18,148.8326
70	25,347.5034	18,013.0613
71	25,285.0588	17,892.0910
72	25,283.0483	17,792.1112
73	25,284.3652	17,857.5979
74	25,284.0636	17,842.6010
75	25,344.3530	17,856.3917
76	25,344.0515	17,841.3947
77	25,482.7607	17,888.0783
78	25,489.5570	17,874.7062
79	25,566.4668	17,930.6215
80	25,573.2630	17,917.2494
81	25,711.9723	17,963.9330
82	25,711.6707	17,948.9360
83	25,769.6084	17,962.7740
84	25,769.3069	17,947.7771
85	25,859.5903	17,960.9646
86	25,859.2887	17,945.9677
87	25,926.6174	17,955.0887
88	25,926.4979	17,949.1443
89	25,926.1549	17,952.1246

⊗ = COORDINATE POINT NO.

Sowed: 06-17-2015 1:43:24 PM by: RET  
 Plot Scale: 1" = 100' 15-2015 2:48:39 PM by: RET  
 U:\Wichita-Civil\2015\15120\003\Drawings\15120-003-C10-BUBBLE MAP

No.	Revision	By	Date
	LATERAL 24, MAIN 7 OF THE NORTHWEST INTERCEPTOR SEWER		
<b>BUBBLE MAP</b>			
GARY JANZEN, P.E. - CITY ENGINEER CITY OF WICHITA PROJECT NO. 468-85039			
			
<b>PEC</b> PROFESSIONAL ENGINEERING CONSULTANTS, P.A. 303 SOUTH TOPEKA WICHITA, KS 67202 316-262-2691 www.pec1.com			
Designed by	MDK, SAD	Job No.	35-15120-3-042
Drawn by	GLM	Date	March 2015
			Sht. 10 of 10