

STREET PAVING AND INCIDENTAL STORM WATER SEWER FOR HUNTERS VIEW

to serve

COPPER GATE 3RD ADDITION

13th Ct. N. from the north line of 13th St. North, north to and including cul-de-sac
Nantucket St. from the west line of 135th St. W., west to the east line of Reserve "A"
Nickelton St. from the north line of Nantucket St. north to the south line of Hunters View St.
Hunters View St. from the west line of 135th St. W., west to the east line of Reserve "B"

CITY OF WICHITA, KANSAS

Gary Janzen, P.E. City Engineer

Project Number

472- 85259

OCA Number

766356

GENERAL NOTES:

1. Contractor will be required to provide notice to utility companies a minimum of forty-eight (48) hours prior to any excavation, as follows:

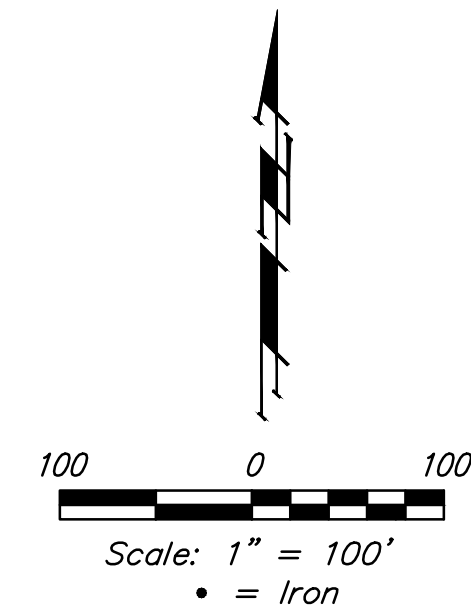
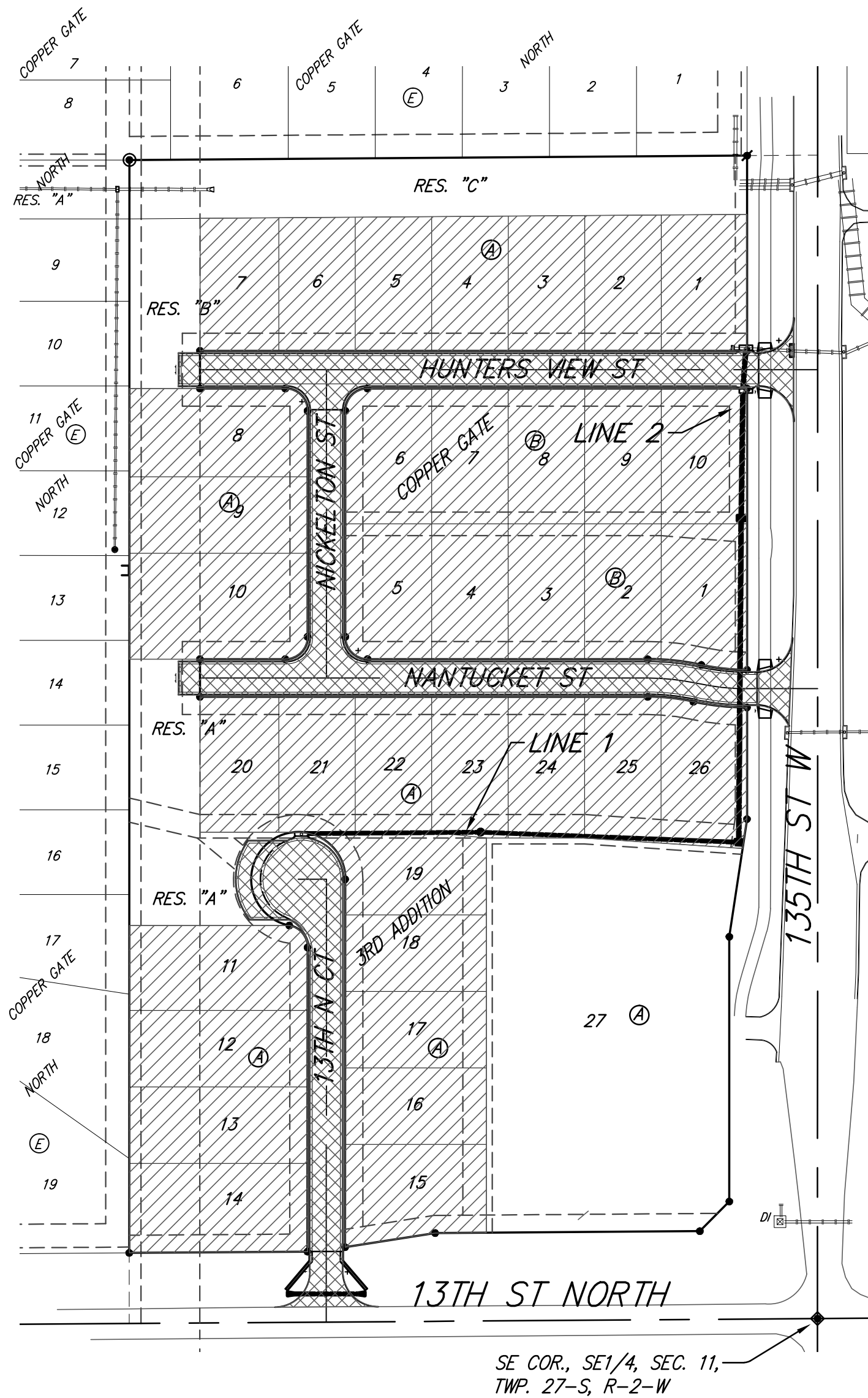
Kansas One-Call	687-2470
Cox Communications	262-4270
Kansas Gas Service	1-888-482-4950
Westar Energy	383-8650
Aquila Energy	1-800-303-0357
ATT	268-2245
City of Wichita Water Dept.	268-4563
City of Wichita Storm Sewer Maint.	268-4024
City of Wichita Traffic Maint.	268-4034
Conoco Phillips Pipeline Co.	1-877-267-2290
Southern Star Pipeline Co.	529-6600
Kinder-Morgan Pipeline Co.	1-888-844-5658

The Contractor must notify the following in case of an emergency:
2. Utility service lines, poles, valve boxes, meters, and etcetera are to be adjusted as necessary by others prior to construction unless the plans specifically call for their adjustment by the Contractor or unless the plans specifically identify a utility to be adjusted by its owner during construction. Existing utilities and their location, as shown on the plans, represent the best information obtainable for design. The Contractor will be required to work around existing utilities within the right-of-way which do not conflict with proposed construction.
3. Rubble from the removal of miscellaneous structures and excess excavation which is to be wasted shall be disposed of on sites to be provided by the Contractor. These sites shall be approved by the Engineer as to suitability, appearance and site location. Locations, in the opinion of the Engineer, that will leave an unsightly appearance will not be approved. All disposal sites must be approved by the Kansas Department of Health and Environment. Material either stockpiled or disposed of in a flood plain would require a Kansas State Board of Agriculture permit. Any material dumped in waters of the United States or wetlands is subject to U.S. Corps. of Engineers permitting regulations. Any material buried or stockpiled beyond approved construction limits would require additional archaeological investigations unless buried in a previously approved borrow location.
4. Trees and shrubs in public right-of-way which are in direct conflict with proposed new construction shall be removed by the Contractor ONLY with the Developer or Baughman Company approval. Trees and shrubs which are not in direct conflict with proposed new construction shall be saved and protected from damage.
5. The Contractor shall give all property owners and/or tenants of developed property abutting the construction of this project a minimum of ten (10) days notice prior to start of construction.
6. The Contractor shall be responsible for preserving property irons. The Contractor will be required to re-establish any property irons which are damaged or destroyed by his construction operations. Such irons shall be re-established by a licensed Land Surveyor in accordance with state laws.
7. All existing and proposed erosion control measures including silt fencing, erosion control mat, straw bales, inlet barriers, and const. entrance shall be maintained throughout construction by the Contractor and until project is accepted by the City of Wichita. The on-site Engineer shall complete weekly reports on the status of erosion control measures. The Contractor shall be required to comply with maintenance and/or replacement of erosion control measures as determined by the on-site Engineer until project is accepted by City of Wichita.
8. A saw cut of at least one-half the depth of existing surface courses or one-fourth the depth of the existing total pavement thickness shall be provided at locations where proposed construction abuts the existing surface course or pavement for which partial removal of that surface or pavement is required. Sawed joint to facilitate removal within three (3) feet of existing joints will not be permitted and for such instances the limits of removal shall extend to the existing joint. Such saw cuts will not be paid for directly and this cost shall be considered as subsidiary to the removal of the surface or pavement.
9. All areas disturbed during construction shall be seeded as follows (Temporary Seeding):

Seed: Ryegrass:	5 lbs/1000 sq. ft.
Seed: Ryegrass:	50 lbs/acre
Seed: Buffalagrass	200 lbs/acre

Fertilizer and erosion control blanket per City Specifications.

All seeding operations shall conform to City of Wichita Standard Specifications. All costs associated with seeding shall be included in bid item "Project Seeding"
10. The Contractor shall adjust valve boxes as necessary to match proposed grade. Cost to be included in bid item, "Site Restoration."
11. The Contractor shall drain any standing water in sump areas of the proposed pavement. Contractor shall overexcavate and recompact these areas as required to maintain compaction of 95% Standard Proctor Density. Cost to be incidental to pavement.
12. Limits of earthwork shall match existing ground elevations at the right-of-way line unless otherwise noted on the plans with a new finished grade elevation. When a new finished grade elevation is shown, the earthwork shall extend one foot beyond the right-of-way line and then slope up or down using permissible slopes to match the existing ground surface.
13. The Developer for this project is Paul Kelsey PH# (316)722-1077.
14. Excess excavation shall be stockpiled or spread on-site at a location determined by the Developer or Design Engineer.



BENCHMARKS

"X" cut top of the NE corner of drop inlet. 82.5'± north & 30.5'± west of the SE Cor., SE1/4, Sec. 11, TWP. 27-S, R-2-W. Elev. = 1353.75 (NAVD88)

SHEET INDEX

Title Sheet	1
29' Pavement Details	2
Curb & Gutter Details	3
Sign Details	4
Miscellaneous Details	5
Pavement Underdrain Details	6
Hunters View	7
Nantucket	8
Nickelton	9
13th Court N	10
SWS Line 1	11
SWS Line 2	12
Mass Grading / Erosion Control	13
Mass Grading Details	14
Erosion Control BMP Details	15-19
Std. Type 1A Curb Inlet Detail	20
Drop Inlet Detail	21
Back yard Inlet Detail	22
Ring & Cover Detail	23
Cross Sections	24-30
Coordinate Sheet	31
Copy of Plat	32

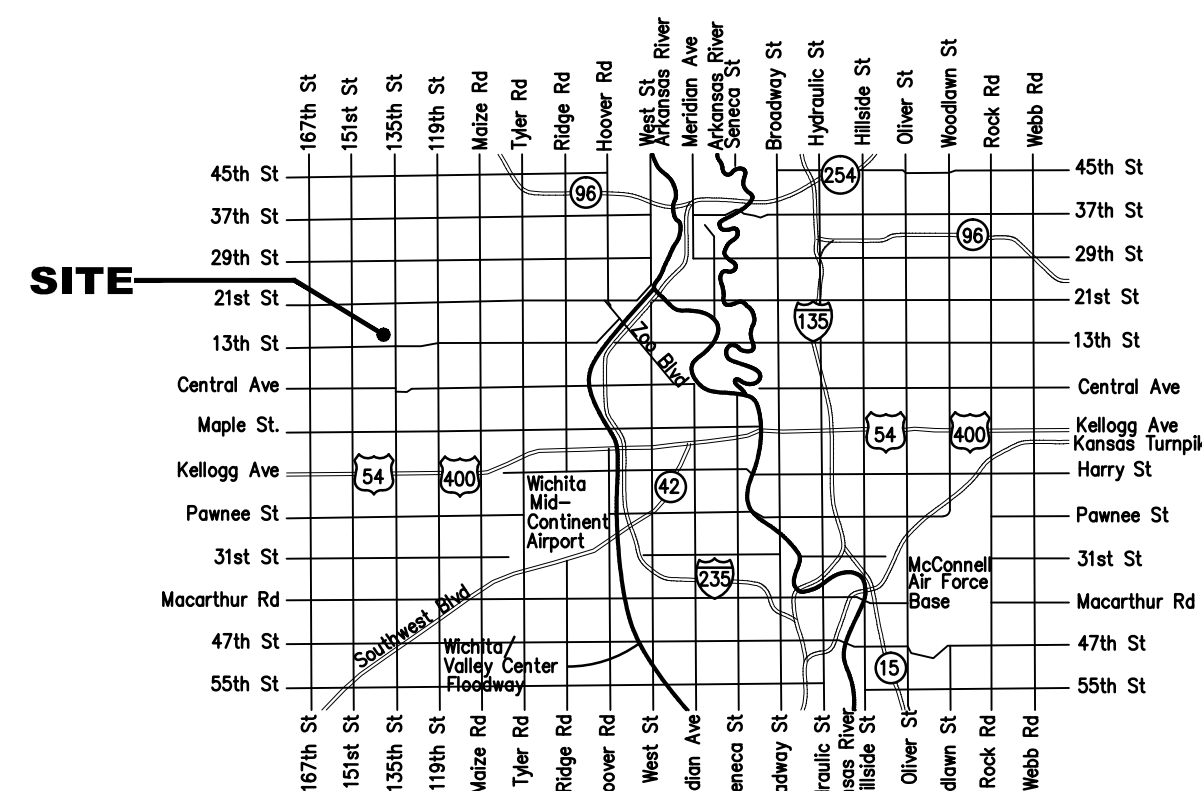
Benefit District: Proposed Streets:

Project Earthwork Totals (CY unadjusted)	Excavation (Unclassified)	Loose Fill (Not a Bid Item)	Compacted Fill (95% Density)	Excavation, Borrow (Contractor Furnished)
Mass Grading	2,055	6,157		3,594
Street (R/W)	2,504	798	238	
Project Total	4,559	6,955	238	3,594

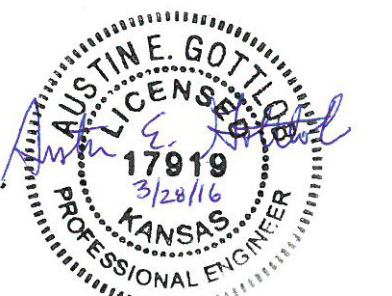
Total Project Length
1,614 L.F. = 0.31 Miles

Storm Water Certification:
These construction plans were prepared in accordance with the current Storm Water Management Regulations as set forth in the City of Wichita's Storm Water Management Ordinance 16.32 and the policies/guidelines presented in the Wichita/Sedgwick County Storm Water Manual.

Disturbed Area = 8.8 ac.
Water Quality Treatment: Provided by snouts and sump inlets.
Downstream Channel Protection: Not specifically addressed due to site using existing upstream pond for storm water quantity control. The site discharges directly into existing City storm sewer and improved downstream channel and pond.



Vicinity Map



Baughman Company, P.A. 315 Ellis St. Wichita, KS 67211 P 316-262-7271 F 316-262-0149

ENGINEERING | SURVEYING | PLANNING | LANDSCAPE ARCHITECTURE