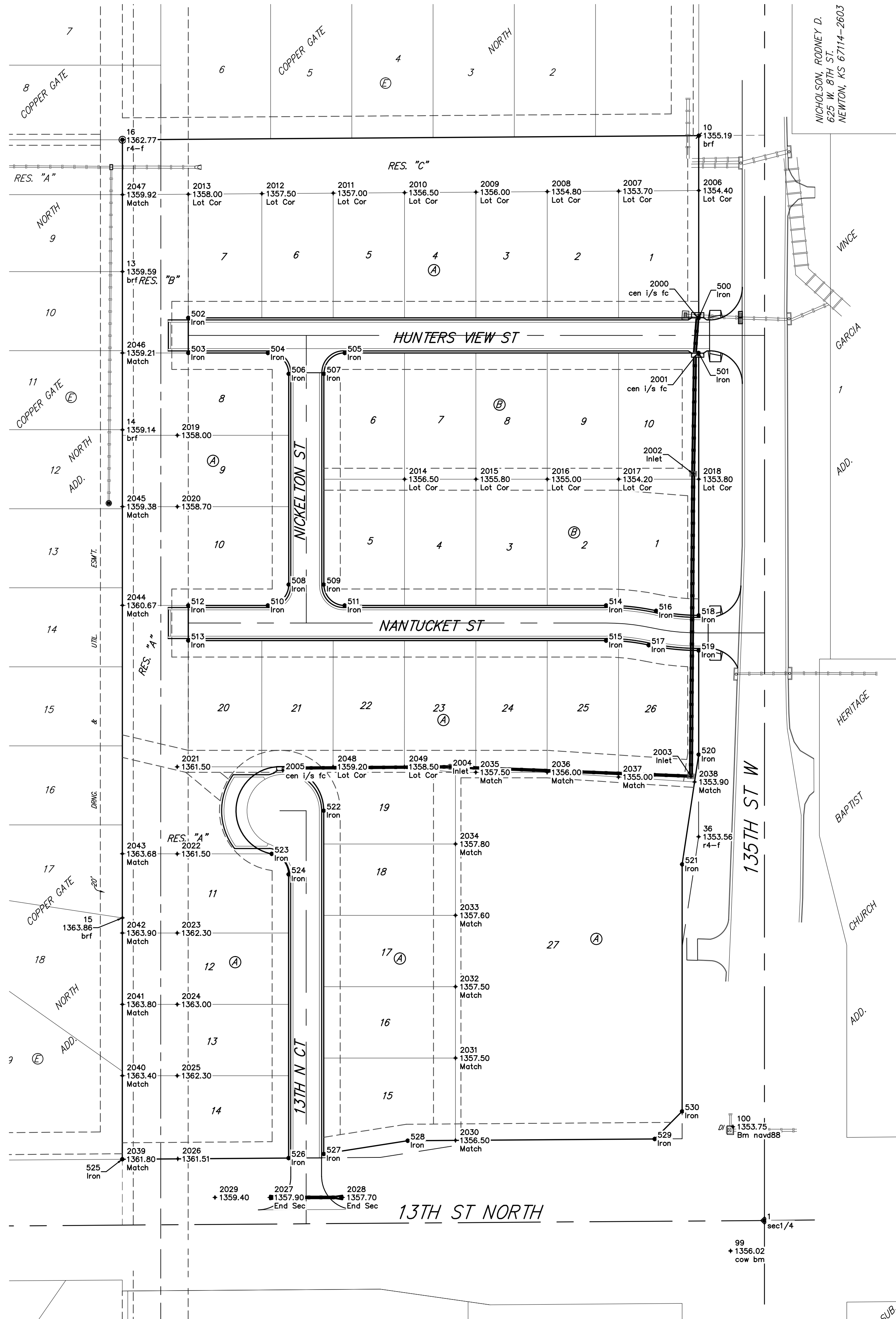
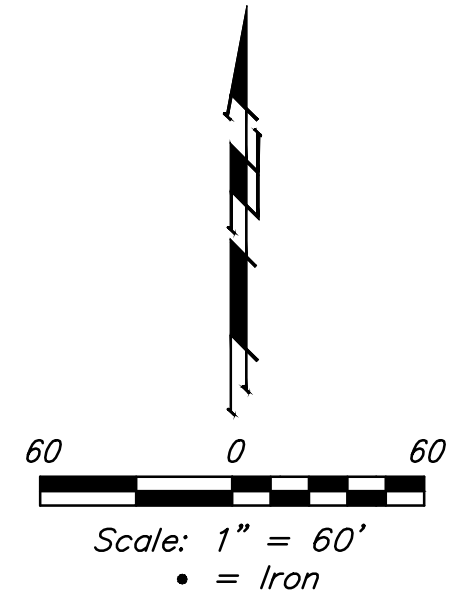


BENCHMARK:
 "X" cut top of the NE corner of drop inlet. 82.5'± north & 30.5'± west of the SE Cor., SE1/4, Sec. 11. TWP. 27-S, R-2-W. Elev. = 1353.75 (NAVD88)



Point Table			
Point #	Northing	Easting	Description
1	22632.89	10000.00	sec1/4
10	23621.21	9940.27	brf
13	23497.26	9415.17	brf
14	23353.23	9415.14	brf
15	22908.57	9415.10	brf
16	23617.14	9415.04	r4-f
36	22982.43	9940.05	r4-f
99	22605.16	9969.13	cow bm
100	22718.32	9971.18	Bm navd88
500	23455.16	9940.12	Iron
2000	23455.32	9939.15	cen i/s fc
2001	23422.99	9939.14	cen i/s fc
2002	23313.16	9935.10	Inlet
2003	23037.61	9933.05	Inlet
2004	23046.19	9713.56	Inlet
2005	23042.88	9561.26	cen i/s fc
2006	23571.16	9940.14	Lot Cor
2007	23570.62	9867.14	Lot Cor
2008	23570.15	9802.14	Lot Cor
2009	23569.69	9737.14	Lot Cor
2010	23569.23	9672.14	Lot Cor
2011	23568.76	9607.14	Lot Cor
2012	23568.30	9542.14	Lot Cor
2013	23567.83	9475.14	Lot Cor
2014	23308.19	9672.10	Lot Cor
2015	23308.19	9737.10	Lot Cor
2016	23308.18	9802.10	Lot Cor
2017	23308.17	9867.10	Lot Cor
2018	23308.16	9940.10	Lot Cor
2019	23348.22	9465.12	
2020	23283.22	9465.11	
2021	23046.23	9465.07	
2022	22966.93	9465.06	
2023	22894.81	9465.05	
2024	22829.81	9465.04	
2025	22764.81	9465.03	
2026	22689.07	9465.58	
2027	22653.91	9549.42	End Sec
2028	22653.90	9615.59	End Sec
2029	22653.91	9499.42	
2030	22705.88	9718.51	Match
2031	22780.84	9718.52	Match
2032	22845.84	9718.53	Match
2033	22910.84	9718.54	Match
2034	22975.84	9718.55	Match
2035	23041.19	9737.06	Match
2036	23041.17	9802.06	Match
2037	23036.92	9867.06	Match
2038	23032.39	9936.31	Match
2039	22688.71	9415.01	Match
2040	22764.81	9415.02	Match
2041	22829.81	9415.03	Match
2042	22894.81	9415.04	Match
2043	22966.93	9415.05	Match
2044	23193.23	9415.08	Match
2045	23283.23	9415.09	Match
2046	23423.23	9415.11	Match
2047	23567.40	9415.14	Match
2048	23046.20	9607.06	Lot Cor
2049	23046.19	9672.06	Lot Cor



POINT DESC KEY:
 "brf" = Baughman rebar found
 "r4-f" = #4 rebar found

	Copper Gate 3rd Addition	
	COORDINATES	
Street Improvements		
Baughman Company, P.A. 315 Ellis St. Wichita, KS 67211 P 316-262-7271 F 316-262-0149 ENGINEERING SURVEYING PLANNING LANDSCAPE ARCHITECTURE		
PROJECT NUMBER	DESIGN	DRAWN
	AEG	JAK
REVISIONS:	APPROVED	DATE
		3/28/16
	SCALE	SHEET
	Noted	31 OF 32