

BENCHMARKS:
 Chiseled square cut on top of headwall of R.C.B.C., 31.1' southeast of the most southerly corner of Lot 1, Block A & 36.6' northeast of the northeast corner of Reserve "C".
 Elev. = 1349.83 NAVD88

Chiseled square cut on top of curb at west end of median, 89.6' south-southwest of the southwest corner of Lot 17, Block A & 86.2' south-southeast of the southeast corner of Lot 31, Block A.
 Elev. = 1348.62 NAVD88

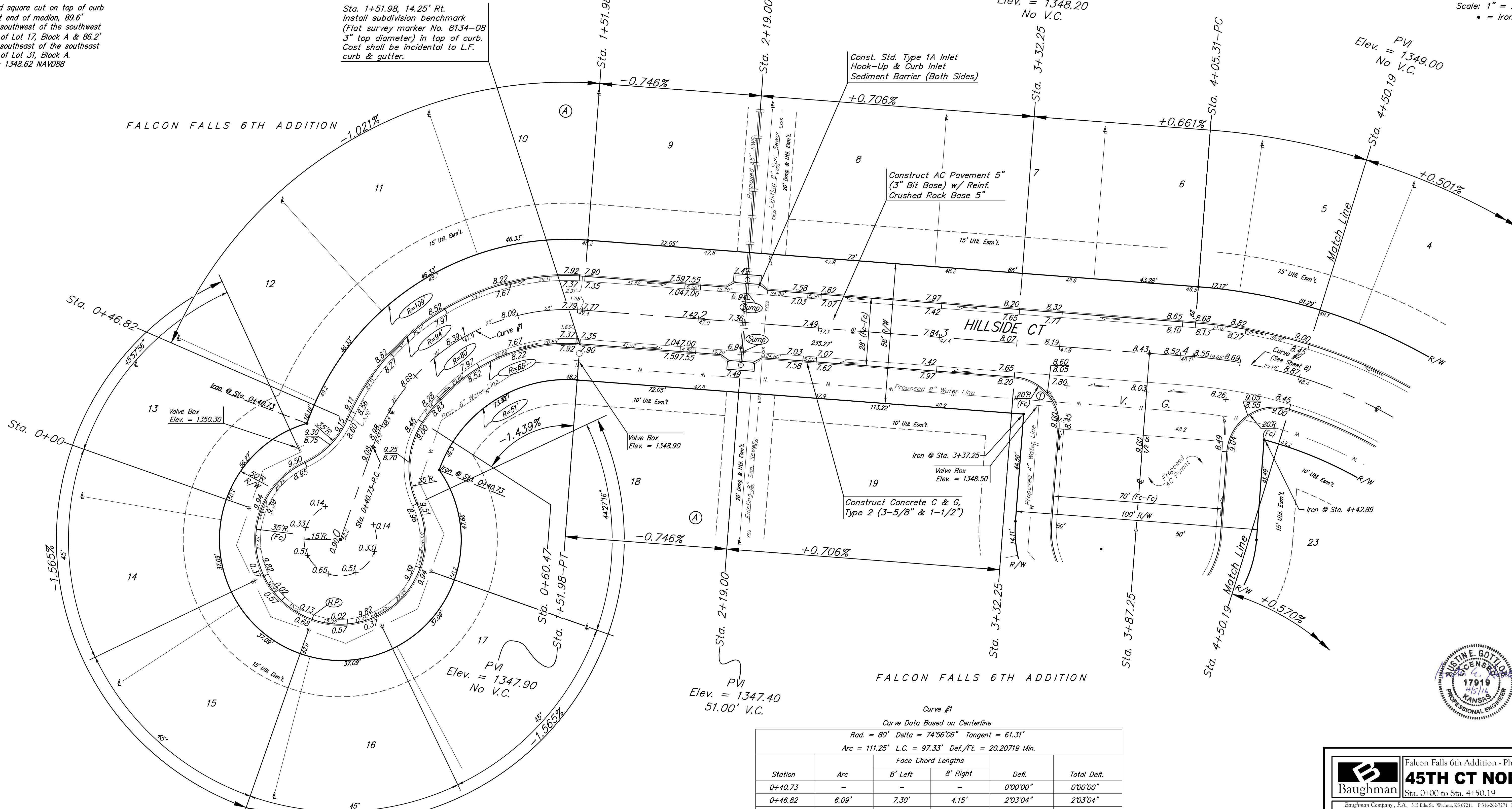
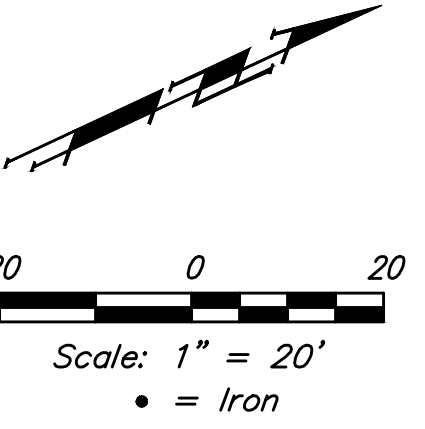
Sta. 1+51.98, 14.25' Rt.
 Install subdivision benchmark (Flat survey marker No. 8134-08 3" top diameter) in top of curb. Cost shall be incidental to L.F. curb & gutter.

PVI
 Elev. = 1347.90
 No V.C.

PVI
 Elev. = 1347.40
 51.00' V.C.

PVI
 Elev. = 1348.20
 No V.C.

PVI
 Elev. = 1349.00
 No V.C.



Curve #1
 Curve Data Based on Centerline
 Rad. = 80' Delta = 74°56'06" Tangent = 61.31'
 Arc = 111.25' L.C. = 97.33' Def./Ft. = 20.20719 Min.

Station	Arc	Face Chord Lengths			Total Defl.
		8' Left	8' Right	Defl.	
0+40.73	-	-	-	0'00"00"	0'00"00"
0+46.82	6.09'	7.30'	4.15'	2'03"04"	2'03"04"
0+50.00	3.18'	3.81'	2.17'	1'04"15"	3'07"19"
0+60.47	10.47'	12.55'	7.13'	3'31"34"	6'38"53"
0+75.00	14.53'	17.40'	9.90'	4'53"37"	11'32"30"
1+00.00	25.00'	29.87'	16.99'	8'25"11"	19'57"41"
1+25.00	25.00'	29.87'	16.99'	8'25"11"	28'22"52"
1+50.00	25.00'	29.87'	16.99'	8'25"10"	36'48"02"
1+51.98	1.98'	2.37'	1.35'	0'40"01"	37'28"03"

Roll type curb & gutter to be constructed on the pavement on this sheet.
 Top of curb elevation are given for full height curb.



Baughman Falcon Falls 6th Addition - Phase II
45TH CT NORTH
 Sta. 0+00 to Sta. 4+50.19

Baughman Company, P.A. 315 Ellis St. Wichita, KS 67211 P 316-262-2149 F 316-262-0149
 ENGINEERING | SURVEYING | PLANNING | LANDSCAPE ARCHITECTURE

PROJECT NUMBER	DESIGN	DRAWN
	AEG	JAK
REVISIONS:	APPROVED	DATE
		11/24/15
	SCALE	
	Noted	
	SHEET	

7 OF 24