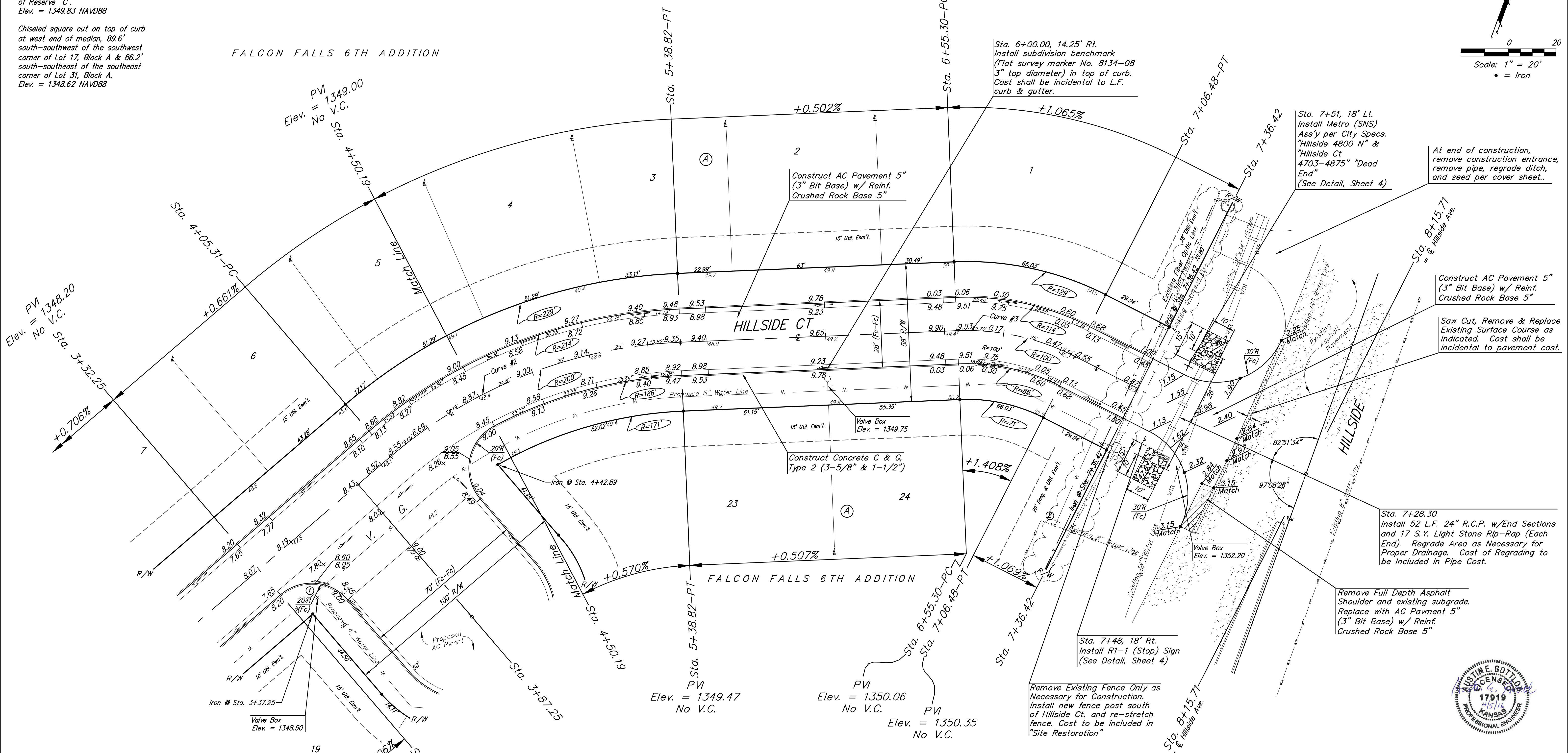
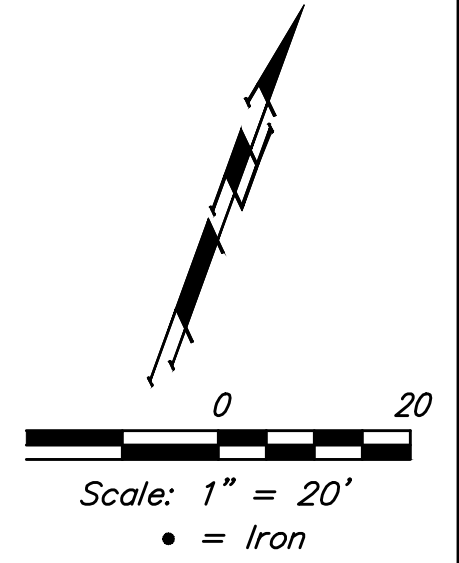


BENCHMARKS:
 Chiseled square cut on top of headwall of R.C.B.C., 31.1' southeast of the most southerly corner of Lot 1, Block A & 36.6' northeast of the northeast corner of Reserve "C".
 Elev. = 1349.83 NAVD88

Chiseled square cut on top of curb at west end of median, 89.6' south-southwest of the southwest corner of Lot 17, Block A & 86.2' south-southeast of the southeast corner of Lot 31, Block A.
 Elev. = 1348.62 NAVD88

Remove, Existing Trees Only as Necessary for Construction. Cost to be Included in "Site Clearing"



PVI
 Elev. = 1349.00
 No V.C.
 Sta. 4+50.19

PVI
 Elev. = 1348.20
 No V.C.
 Sta. 3+32.25

PVI
 Elev. = 1350.06
 No V.C.
 Sta. 6+55.30-PC

PVI
 Elev. = 1349.47
 No V.C.
 Sta. 5+38.82-PT

PVI
 Elev. = 1350.06
 No V.C.
 Sta. 6+55.30-PC

PVI
 Elev. = 1350.35
 No V.C.
 Sta. 7+06.48-PT

At end of construction, remove construction entrance, remove pipe, regrade ditch, and seed per cover sheet.

Construct AC Pavement 5" (3" Bit Base) w/ Reinf. Crushed Rock Base 5"
 Saw Cut, Remove & Replace Existing Surface Course as Indicated. Cost shall be incidental to pavement cost.

Sta. 7+28.30
 Install 52 L.F. 24" R.C.P. w/End Sections and 17 S.Y. Light Stone Rip-Rap (Each End). Regrade Area as Necessary for Proper Drainage. Cost of Regrading to be Included in Pipe Cost.

Remove Full Depth Asphalt Shoulder and existing subgrade. Replace with AC Pavment 5" (3" Bit Base) w/ Reinf. Crushed Rock Base 5"

Remove Existing Fence Only as Necessary for Construction. Install new fence post south of Hillside Ct. and re-stretch fence. Cost to be included in "Site Restoration"

Sta. 7+48, 18' Rt.
 Install R1-1 (Stop) Sign (See Detail, Sheet 4)

Sta. 6+00.00, 14.25' Rt.
 Install subdivision benchmark (Flat survey marker No. 8134-08 3" top diameter) in top of curb. Cost shall be incidental to L.F. curb & gutter.

Sta. 7+51, 18' Lt.
 Install Metro (SNS) Ass'y per City Specs. "Hillside 4800 N" & "Hillside Ct 4703-4875" "Dead End" (See Detail, Sheet 4)



Curve #2
 Curve Data Based on Centerline
 Rad. = 200' Delta = 38°14'46" Tangent = 69.35'
 Arc = 133.51' L.C. = 131.04' Def./Ft. = 8.59399 Min.

Station	Arc	Face Chord Lengths		Defl.	Total Defl.
		8' Left	8' Right		
4+05.31	-	-	-	0°00'00"	0°00'00"
4+25.00	19.69'	21.85'	17.52'	2°49'13"	2°49'13"
4+50.19	25.19'	27.94'	22.40'	3°36'29"	6°25'42"
4+75.00	24.81'	27.52'	22.07'	3°33'13"	9°58'55"
5+00.00	25.00'	27.73'	22.23'	3°34'51"	13°33'46"
5+25.00	25.00'	27.73'	22.23'	3°34'51"	17°08'37"
5+38.82	13.82'	15.34'	12.30'	1°58'46"	19°07'23"

Curve #3
 Curve Data Based on Centerline
 Rad. = 100' Delta = 29°19'44" Tangent = 26.17'
 Arc = 51.18' L.C. = 50.63' Def./Ft. = 17.19161 Min.

Station	Arc	Face Chord Lengths		Defl.	Total Defl.
		8' Left	8' Right		
6+55.30	-	-	-	0°00'00"	0°00'00"
6+75.00	19.70'	24.00'	15.34'	5°38'40"	5°38'40"
7+00.00	25.00'	30.43'	19.45'	7°09'48"	12°48'28"
7+06.48	6.48'	7.91'	5.05'	1°51'24"	14°39'52"

Roll type curb & gutter to be constructed on the pavement on this sheet. Top of curb elevation are given for full height curb.

Baughman Falcon Falls 6th Addition - Phase II
HILLSIDE CT
 Sta. 4+50.19 to Sta. 7+36.42

Baughman Company, P.A. 315 Ellis St. Wichita, KS 67211 P 316-262-2171 F 316-262-0149
 ENGINEERING | SURVEYING | PLANNING | LANDSCAPE ARCHITECTURE

PROJECT NUMBER	DESIGN	DRAWN
	AEG	JAK
REVISIONS:	APPROVED	DATE
		11/24/15
	SCALE	
	Noted	
	SHEET	

8 OF 24

E:\Projects\Falcon Falls 6th Addition_1504\F108\Engineering\Phase 2\Sr_1412E179\STREET_PLANS.dwg