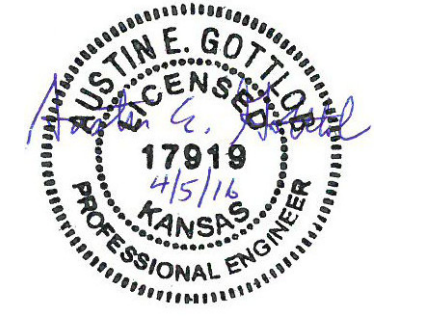
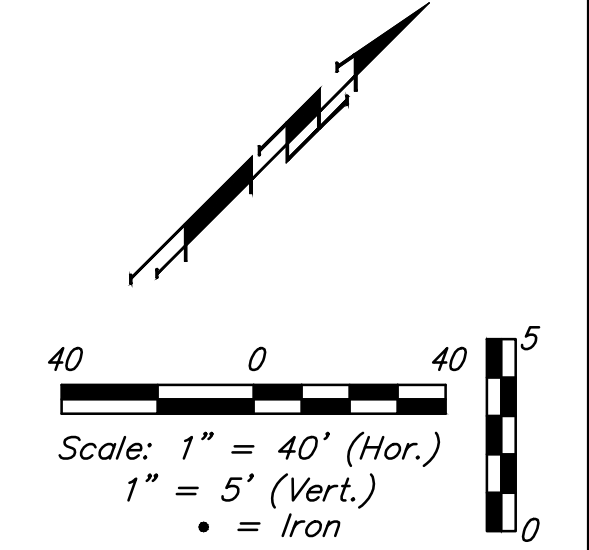
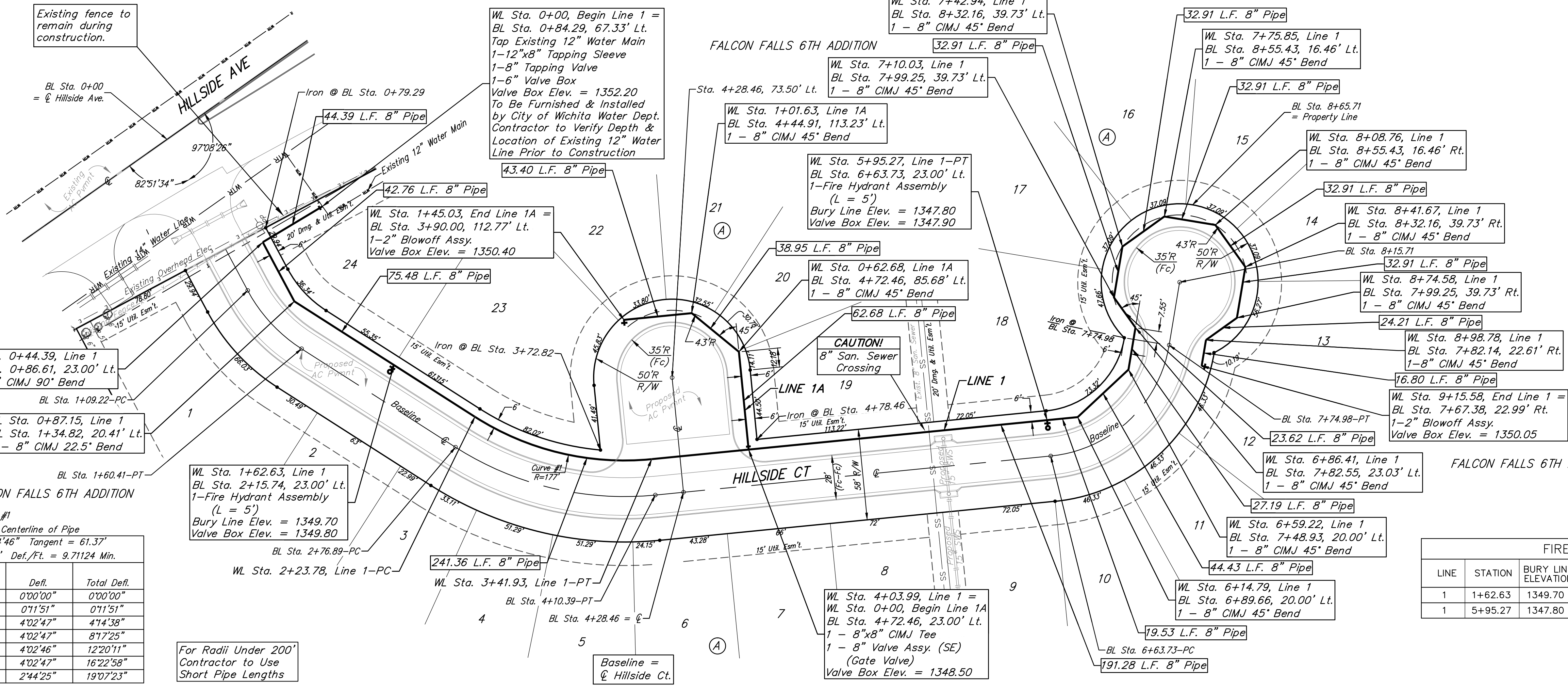


**BENCHMARKS:**

Chiseled square cut on top of headwall of R.C.B.C., 31.1' southeast of the most southerly corner of Lot 1, Block A & 36.6' northeast of the northeast corner of Reserve "C".  
Elev. = 1349.83 NAVD88

Chiseled square cut on top of curb at west end of median, 89.6' south-southwest of the southwest corner of Lot 17, Block A & 86.2' south-southeast of the southeast corner of Lot 31, Block A.  
Elev. = 1348.62 NAVD88



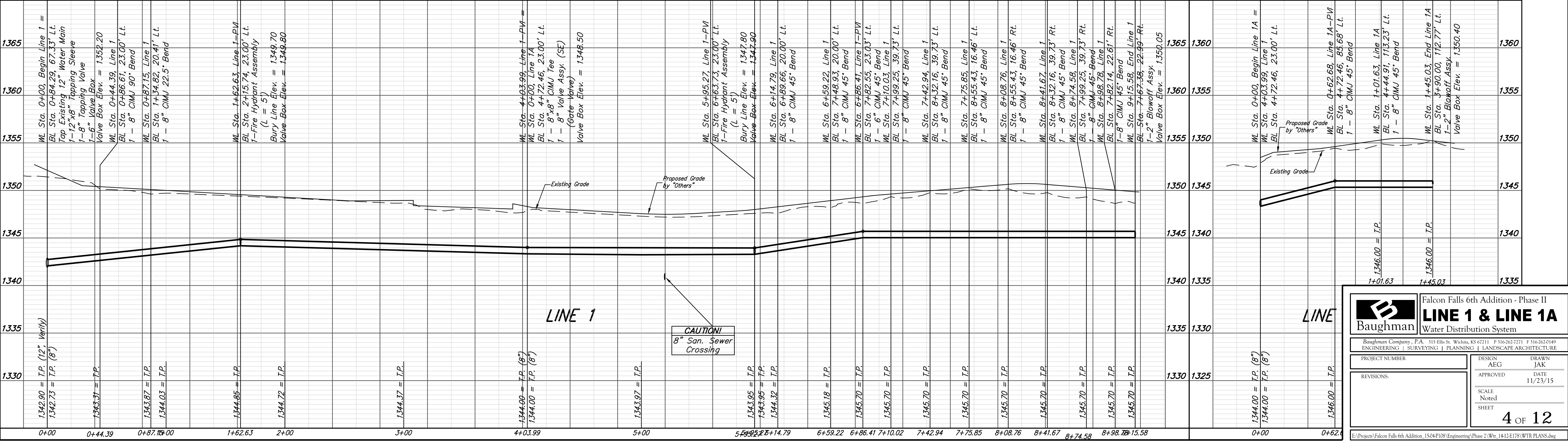
Curve #1  
Curve Data Based on Centerline of Pipe  
Rad. = 177' Delta = 38°44'6\"/>

Station	Arc	Chord 8' Left	Defl.	Total Defl.
2+23.78	-	-	0°00'00\"/>	

For Radii Under 200'  
Contractor to Use  
Short Pipe Lengths

**FIRE HYDRANTS REQUIRED**

LINE	STATION	BURY LINE ELEVATION	TOP OF PIPE ELEVATION	FIRE HYDRANT BURY REQUIRED*	VALVE STEM EXT. REQUIRED (ft)*
1	1+62.63	1349.70	1344.85	5.5'	-
1	5+95.27	1347.80	1343.95	4.5'	-



**Baughman** Falcon Falls 6th Addition - Phase II  
**LINE 1 & LINE 1A**  
Water Distribution System

Baughman Company, P.A. 315 Ellis St. Wichita, KS 67211 P 316-262-2721 F 316-262-0149  
ENGINEERING | SURVEYING | PLANNING | LANDSCAPE ARCHITECTURE

PROJECT NUMBER: \_\_\_\_\_ DESIGN: AEG DRAWN: JAK  
APPROVED: \_\_\_\_\_ DATE: 11/23/15  
REVISIONS: \_\_\_\_\_ SCALE: Noted SHEET: 4 OF 12

8:\Projects\Falcon Falls 6th Addition\_1504\F108\Engineering\Phase II\Wtr\_1412E178\WTR PLANS.dwg