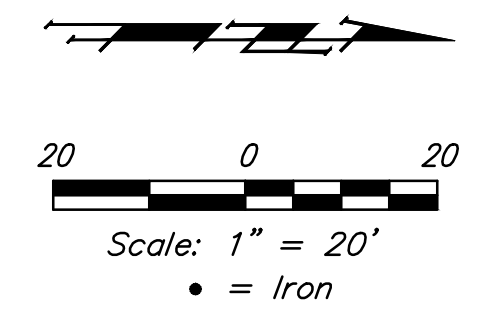


**BENCHMARKS:**

BM #1: "□" cut in top of curb near intersection of 27th Street North & Woodridge, south of SE corner of Lot 24, Block C, Woods North 3rd Addition.  
Elev. = 1392.97 NGVD29

BM #2: "□" cut in top of curb near intersection of Woodridge Court & Woodridge, south of SE corner of Lot 6, Block A, Woods North 3rd Addition.  
Elev. = 1390.10 NGVD29



Curve #5  
Curve Data Based on Face of Curb  
Rad. = 200' Delta = 10°07'31" Tangent = 17.72'  
Arc = 35.34' L.C. = 35.30' Def./Ft. = 8.59531 Min.

Station / Offset	Face Arc Length	Face Chord Lengths	Defl.	Total Defl.
Sta. 0+41.19, 17.06' Lt.	-	8' Left	0'00'00"	0'00'00"
Sta. 0+58.82, 18.28' Lt.	17.67'	16.96'	2'31'53"	2'31'53"
Sta. 0+76.26, 21.04' Lt.	17.67'	16.96'	2'31'52"	5'03'45"

Curve #6  
Curve Data Based on Face of Curb  
Rad. = 200' Delta = 9°54'52" Tangent = 17.35'  
Arc = 34.60' L.C. = 34.56' Def./Ft. = 8.59634 Min.

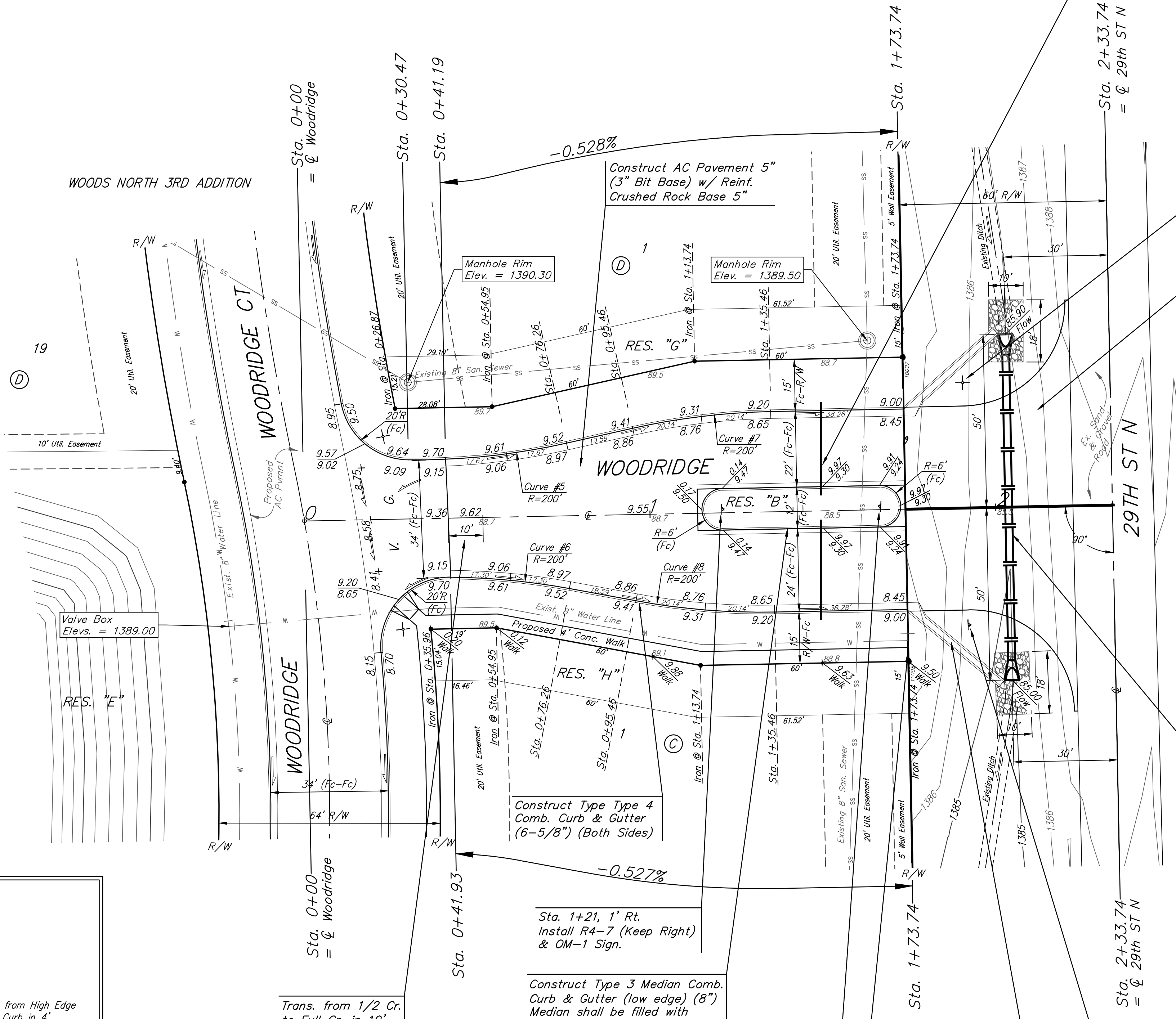
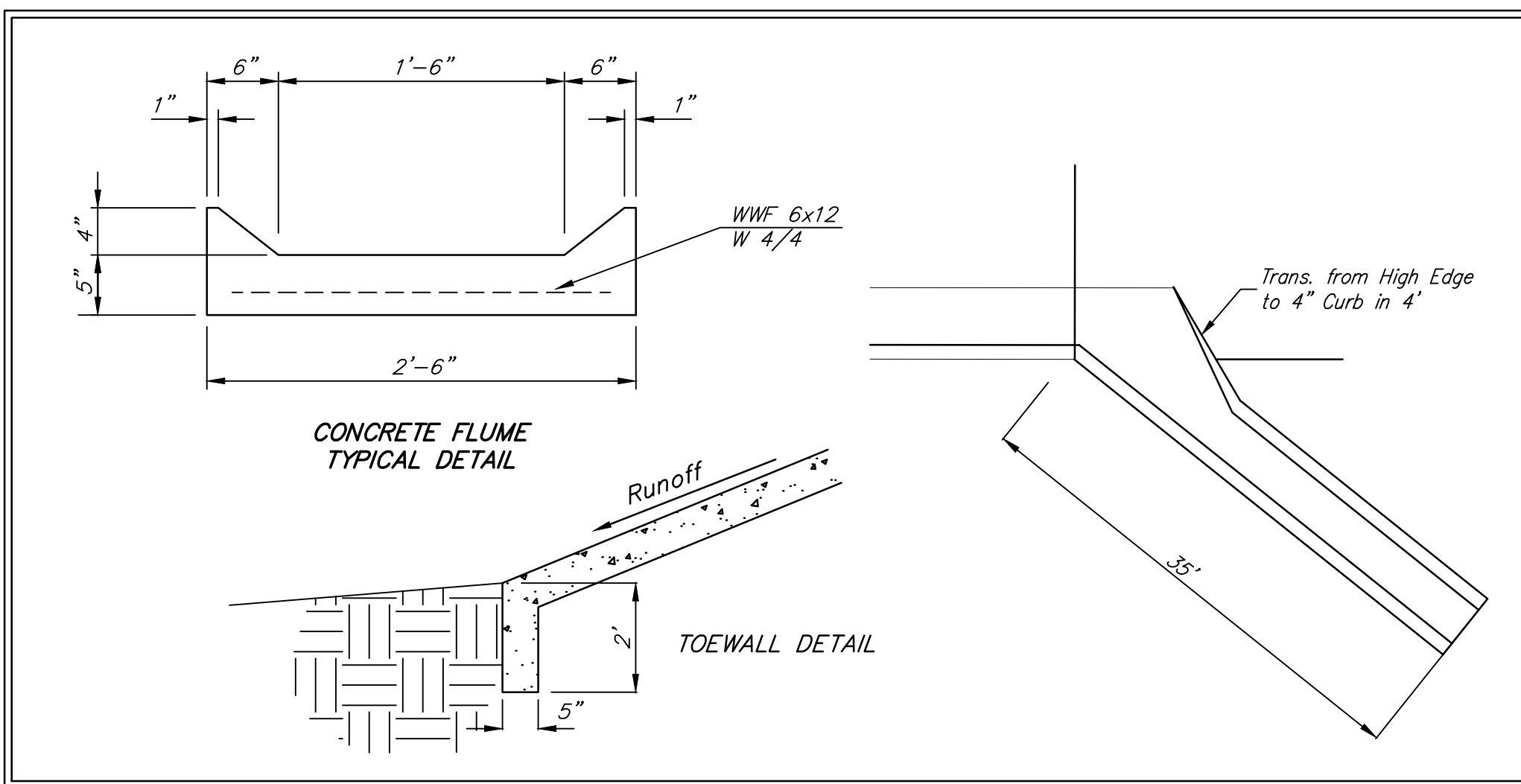
Station / Offset	Face Arc Length	Face Chord Lengths	Defl.	Total Defl.
Sta. 0+41.93, 17.08' Rt.	-	8' Right	0'00'00"	0'00'00"
Sta. 0+59.18, 18.32' Rt.	17.30'	16.61'	2'28'43"	2'28'43"
Sta. 0+76.26, 21.04' Rt.	17.30'	16.61'	2'28'43"	4'57'26"

Curve #7  
Curve Data Based on Face of Curb  
Rad. = 200' Delta = 11°32'13" Tangent = 20.20'  
Arc = 40.28' L.C. = 40.20' Def./Ft. = 8.59256 Min.

Station / Offset	Face Arc Length	Face Chord Lengths	Defl.	Total Defl.
Sta. 0+95.46, 24.96' Lt.	-	8' Left	0'00'00"	0'00'00"
Sta. 1+15.36, 27.99' Lt.	20.14'	20.93'	2'53'03"	2'53'03"
Sta. 1+35.46, 29.00' Lt.	20.14'	20.93'	2'53'03"	5'46'06"

Curve #8  
Curve Data Based on Face of Curb  
Rad. = 200' Delta = 11°32'13" Tangent = 20.20'  
Arc = 40.28' L.C. = 40.20' Def./Ft. = 8.59256 Min.

Station / Offset	Face Arc Length	Face Chord Lengths	Defl.	Total Defl.
Sta. 0+95.46, 24.96' Rt.	-	8' Right	0'00'00"	0'00'00"
Sta. 1+15.36, 27.99' Rt.	20.14'	20.93'	2'53'03"	2'53'03"
Sta. 1+35.46, 29.00' Rt.	20.14'	20.93'	2'53'03"	5'46'06"



Install 1-27' Long 6" PVC pipe (Left) & 1-29' long 6" PVC pipe (Right) under pavement. Cap each end. Mark End of Pipes with Wooden Stake Painted Pink. Cost incidental to Pavement Cost.

Sta. 1+92, 27' Lt. Install Metro (SNS) Ass'y per City Specs. "Woodridge" "29th St" "N" & "E" (See Detail, Sheet 4)

Construct 5" A.C. Pvm't Hook-up w/5" Reinf. Crushed Rock Base

Install 100 L.F. 24" RCP w/End Sections and 20 SY Light-stone Rip-rap (each end). The west end of the entrance culvert shall have a rip rap toewall only on the west edge of the rip-rap. The east end of the entrance culvert shall have a toewall only on the east end of the rip-rap. Regrade Area as Necessary for Proper Drainage. Cost of Regrading to be Included in Pipe Cost.

Sta. 1+21, 1' Rt. Install R4-7 (Keep Right) & OM-1 Sign.

Construct Type 3 Median Comb. Curb & Gutter (low edge) (8") Median shall be filled with friable fill material

Sta. 1+66, 1' Rt. Install R4-7 (Keep Right) & OM-1 Sign.

Sta. 1+73.74 End Construction of 4' Wide Concrete Sidewalk (4")

Sta. 1+92, 34' Rt. Install R1-1 (Stop) Sign (See Detail, Sheet 4)

Construct Reinf. Concrete Flume Each Side per Detail, This Sheet.



		Woods North 3rd Addition - Phase IV <b>WOODRIDGE</b> Sta. 0+00 to Sta. 2+33.74	
Baughman Company, P.A. 315 Ellis St. Wichita, KS 67211 P 316-262-7271 F 316-262-0149 ENGINEERING   SURVEYING   PLANNING   LANDSCAPE ARCHITECTURE			
PROJECT NUMBER 472-85049	DESIGN AEG	DRAWN JAK	DATE 3/31/16
REVISIONS:	APPROVED	SCALE Noted	SHEET 12 OF 24