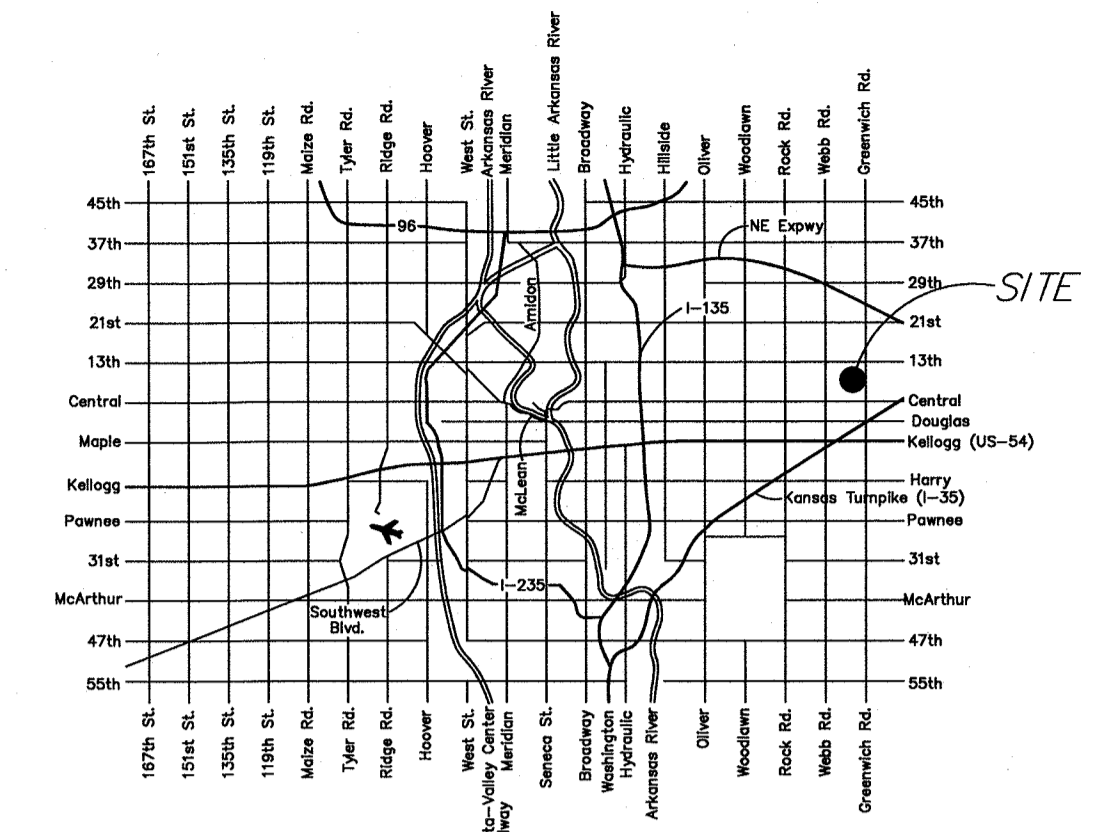


GENERAL NOTES:

- The Contractor shall comply with all applicable safety regulations. All construction shall be completed following current City Standard Specifications and Special Provisions.
- Contractor will be required to provide notice to utility companies a minimum of seventy-two (72) hours prior to any excavation, as follows:
 Kansas One-Call 1-316-687-2470
 The Contractor must notify the following in case of an emergency:
 AT&T 1-800-246-8464
 Black Hills Energy 1-800-694-8989
 City of Wichita Water 1-316-268-4555
 City of Wichita Sewer 1-316-268-4073
 City of Wichita Stormwater 1-316-268-4090
 City of Wichita Traffic 1-316-268-4034
 Cox Communications 1-888-249-3530
 Kansas Gas Service 1-888-482-4950
 Westar Energy 1-800-544-4857
- Utility service lines, poles, etc. are to be adjusted as necessary by others prior to construction unless the plans specifically call for their adjustment by the Contractor or unless the plans specifically identify a utility to be adjusted by its owner during construction. Existing utilities and their location, as shown on the plans, represent the best information obtainable for design. The Contractor will be required to work around existing utilities within the right-of-way which do not conflict with proposed construction.
- Rubble from the removal of miscellaneous structures and excess excavation which is to be wasted shall be disposed of on sites to be provided by the Contractor. These sites shall be approved by the Engineer as to suitability, appearance and site location. Locations, in the opinion of the Engineer, that will leave an unsightly appearance will not be approved. All disposal sites must be approved by the Kansas Department of Health and Environment. Material either stockpiled or disposed of in a flood plain would require a Kansas State Board of Agriculture permit. Any material buried or stockpiled beyond approved construction limits would require additional archeological investigations unless buried in a previously approved borrow location.
- Trees and shrubs in public right-of-way which are in direct conflict with proposed new construction shall be removed by the Contractor with the Engineer's approval. Trees and shrubs which are not in direct conflict with proposed new construction shall be saved and protected from damage.
- The Contractor shall give all property owners and/or tenants of developed property abutting the construction of this project a minimum of ten (10) days notice prior to start of construction.
- The Contractor shall be responsible for preserving property irons. The Contractor will be required to re-establish any property irons which are damaged or destroyed by his construction operations. Such irons shall be re-established by a licensed land surveyor in accordance with state laws.
- The Water Distribution Division shall field locate water valves one time during construction when requested by the Contractor. It shall be the Contractor's responsibility to preserve such field locations during the construction process. Water valves, valve boxes or fire hydrants damaged during construction shall be repaired by Contractor at his own expense. Valves boxes and water meters within the project limits shall be adjusted to match field grades.
- The Contractor shall notify the consultant engineer and Tom Mason with the City at 316-268-4574 with the anticipated construction start date and notify them of project completion. Staking and inspection for this project will be the responsibility of the Contractor.
- If traffic is impacted by construction, a traffic control plan must be submitted and approved by the City Traffic Engineer, Brian Coon at traffic@wichita.gov before construction can begin. The Contractor shall be responsible for all traffic control measures to facilitate construction. All construction zone markings and signage shall conform to the latest version of the Manual on Uniform Traffic Control Devices (MUTCD) as published by the US Dept. of Transportation, Federal Highway Administration. All costs associated with construction markings and signage shall be the Contractors responsibility.
- All elevations shown are NAVD 88.
- All areas disturbed during construction that will not be under proposed pavement shall be restored to match existing conditions.

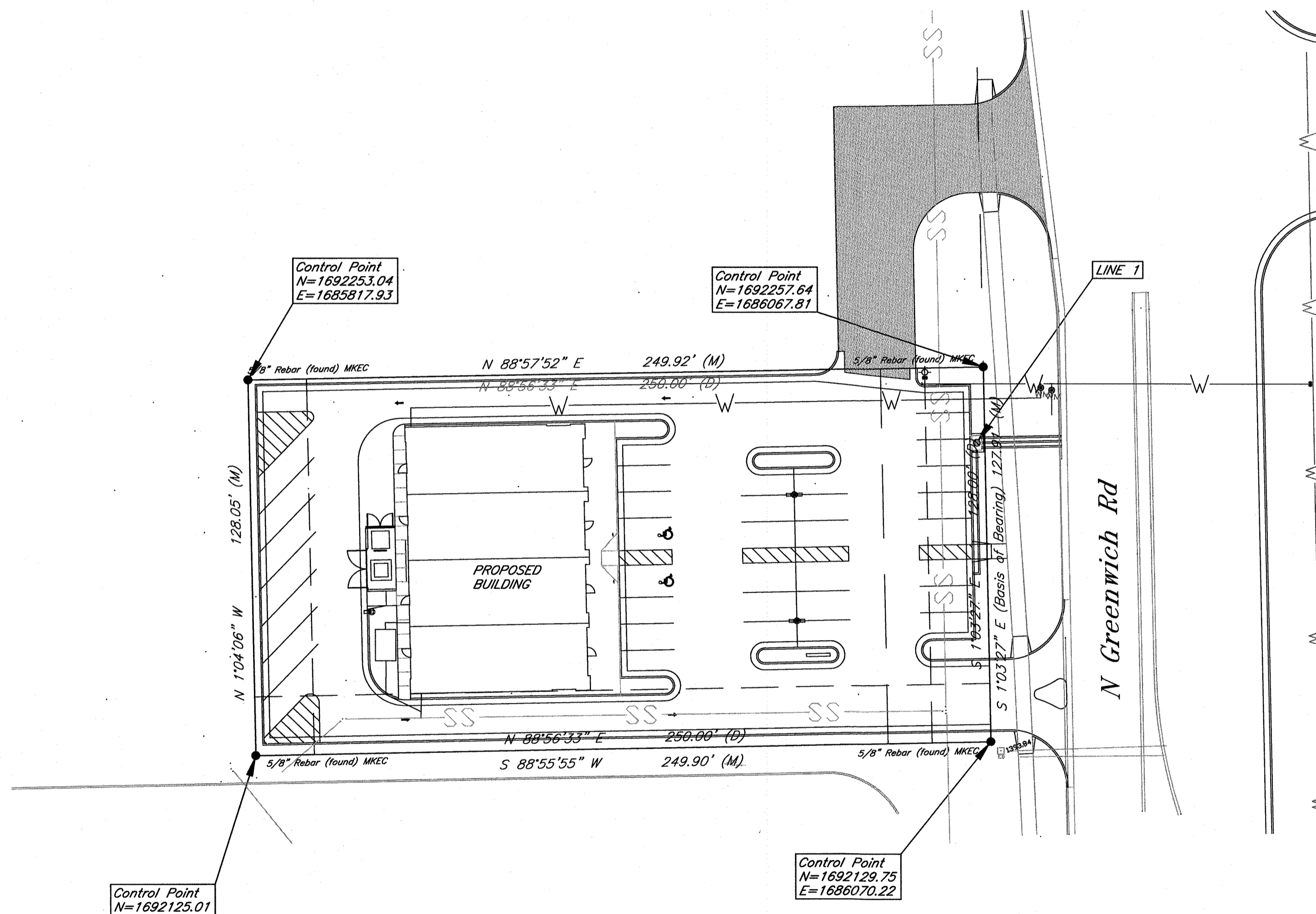
- A portion of excess excavated material shall be mounded around manholes which extend more than one (1) foot above the existing ground. Such mound shall be constructed with new development a six (6) foot diameter flat top with 4 to 1 side slopes down to the original ground. The elevation of the flat top of the mound shall be 0.4 foot below the top of the manhole.
- Geotechnical report available upon request.
- Contractor shall limit the extent of trench openings overnight and weekends to less than 50 feet.
- Contractor shall provide positive drainage away from all manhole covers.
- City maintenance of storm sewer ends at right-of-way or easement line.
- Any sidewalk, drive approach, or street pavement removed to construct project must have a pavement cut permit and be replaced by the City contractor. Permits can be obtained by calling 316-268-4501 or 316-268-4480.
- The inspection firm shall submit to the City Stormwater Maintenance Division a digital copy of the CCTV inspection of the conduits and structures following construction. The digital file formation shall be compatible with the City input template. A copy of the template is available upon request at 316-268-4090.

STORM SEWER IMPROVEMENTS
 to serve
Part of Lot 9, Block 1, Kiser West Addition
CITY OF WICHITA, KANSAS
 Gary Janzen, P.E., City Engineer
 0329 PPD (607861)



Vicinity Map
Index of Sheets:

- Cover Sheet
- Grading Plan/Site Plan
- ERU Plan
- Type 1 Curb Inlet Detail
- 12F Snout Detail
- Erosion Plan
- 6.1-6.5 Erosion Control BMP Details (attached or available on City's website)
- Plat



Stormwater Certification:
 New Development

These construction plans were prepared in accordance with the current Stormwater Management Regulations as set forth in the City of Wichita's Stormwater Management Ordinance 16.32 and the policies/guidelines presented in the Wichita/Sedgwick County Stormwater Manual.

Disturbed Area: 31984 sq. ft.
 Water Quality Treatment: On-site snout.
 Downstream Channel Protection: N/A
 Detention: Pine Meadow Addition Downstream Pond
 The BMP used for this development is silt fence inlet protection.

Benchmark:

COW Benchmark; SW corner of intersection Greenwich and 13th Street North,
 43.80 ft. S of CL
 101.5 ft. W of CL
 7.20 ft. N of barb wire fence running east-west
 Elev. = 1385.53 NAVD88

APPROVED AS NOTED
 BY WICHITA PUBLIC WORKS ENGINEERING
 AND STORMWATER DIVISION

Engineering *Rebecca Duff* 08/25/15
 Stormwater *[Signature]* 08/25/15

NOTE TO CONTRACTORS

Inspection and testing for this project is to be provided by a Licensed Consulting Engineering Firm under contract with the Owner/Developer. Said inspection to be in accordance with the City of Wichita standard construction engineering practices and certified by a Licensed Professional Engineer in the state of Kansas. No work shall be performed by the Contractor without such inspection nor shall any work be commenced without written authorization by City Engineering. All Construction and Materials shall comply with the City of Wichita Specifications and Standards and Special Provisions (on file and available at Wichita.gov).

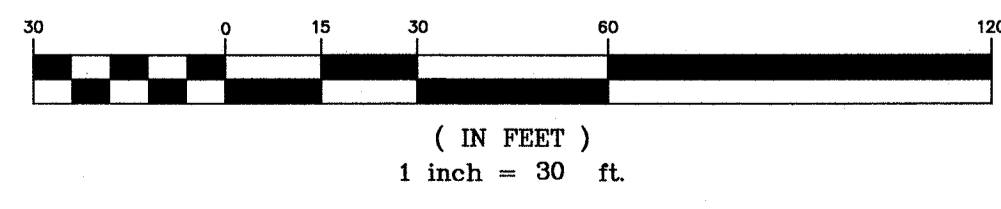
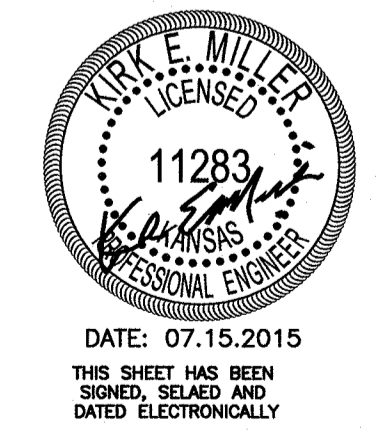
An approved copy of these plans signed by City staff are required on-site.

AS BUILTS

Contractor: **McCullough Excavation**
 Project Inspector: **Matt Perez**

KEMILLER ENGINEERING PA
 117 E. Lewis, Wichita, KS 67202 (316)264-0242

4/28/2016



July 2015

KEMILLER ENGINEERING PA
 117 E. Lewis, Wichita, KS 67202 (316)264-0242



1300 E. Lewis
Wichita KS 67211
316.247.8233
316.247.8566 fax
krehbielarchitecture.co



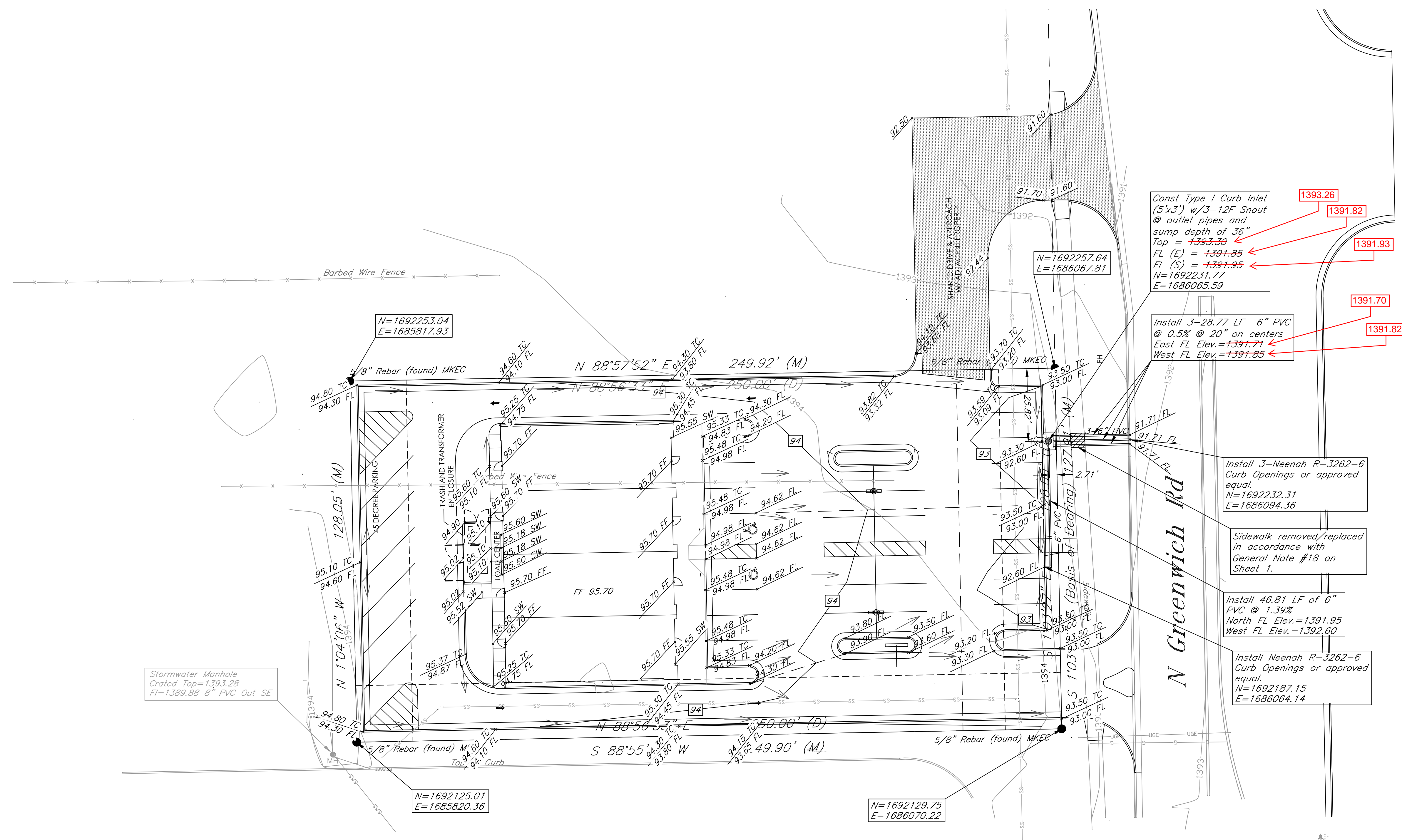
DATE: 05-28-2015
THIS SHEET HAS BEEN
SIGNED, SEALED AND
DATED ELECTRONICALLY

GATEWAY PLAZA
1095 N. GREENWICH ROAD
WICHITA, KS.

PROJECT NO.
14037
SHEET TITLE
Grading Plan

SHEET NO.

C2.0



Const Type I Curb Inlet
(5'x3') w/3-12\"/>

Install 3-28.77 LF 6\"/>

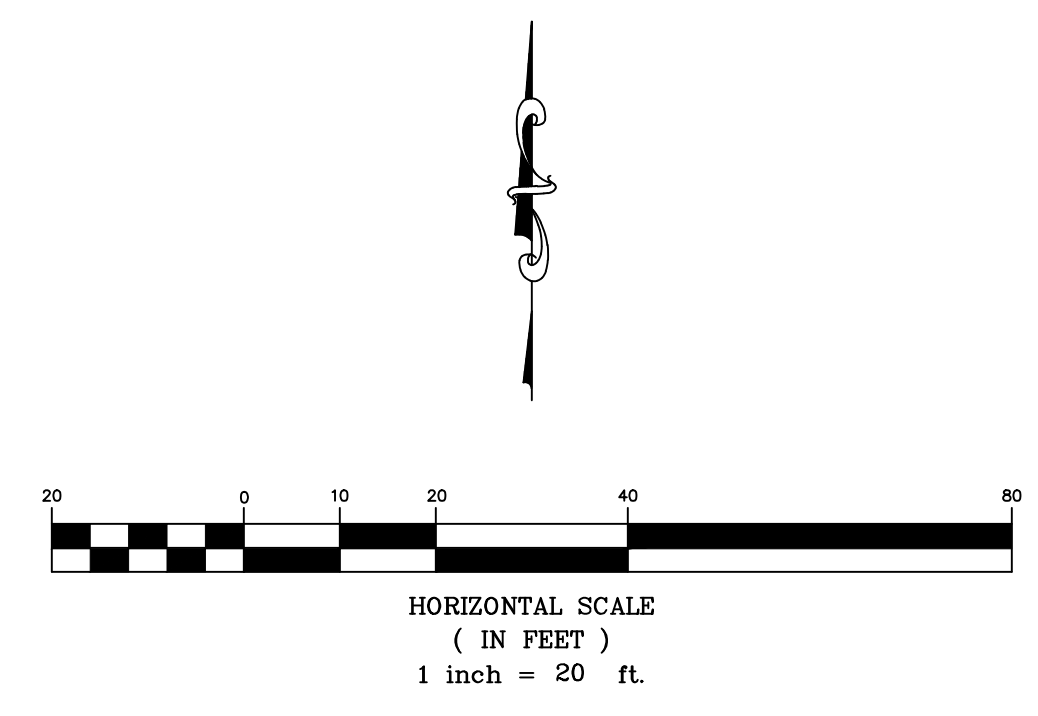
Install 3-Neenah R-3262-6
Curb Openings or approved
equal.
N=1692232.31
E=1686094.36

Sidewalk removed/replaced
in accordance with
General Note #18 on
Sheet 1.

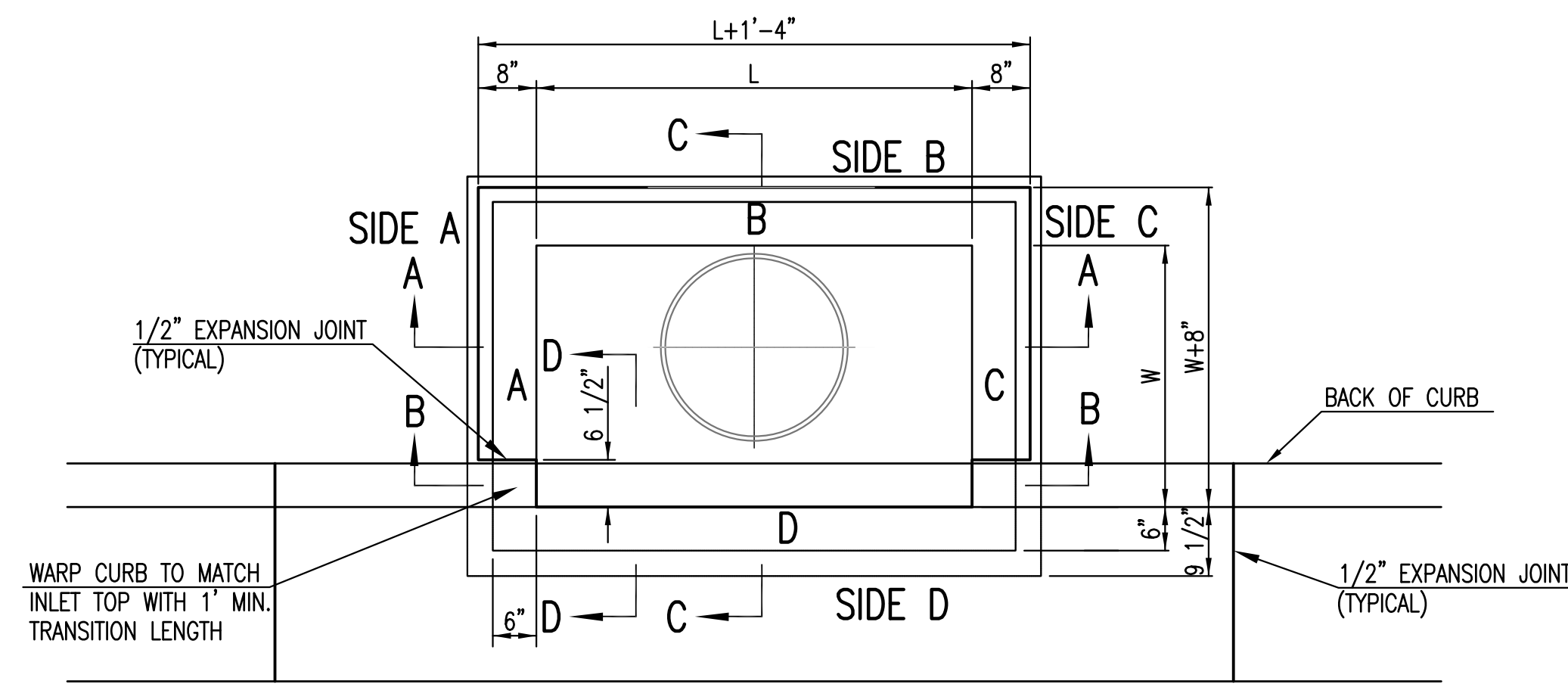
Install 46.81 LF of 6\"/>

Install Neenah R-3262-6
Curb Openings or approved
equal.
N=1692187.15
E=1686064.14

Grading Legend:
EL = Elevation
FL = Flow Line
TC = Top of Curb
SW = Top of Sidewalk
TP = Top of Pavement
FF = Finish Floor
→ Flow Arrows



AS BUILTS	
Contractor: McCullough Excavation	Project Inspector: Matt Perez
4/28/2016	
117 E. Lewis, Wichita, KS 67202 (316)264-0242	



TOP VIEW

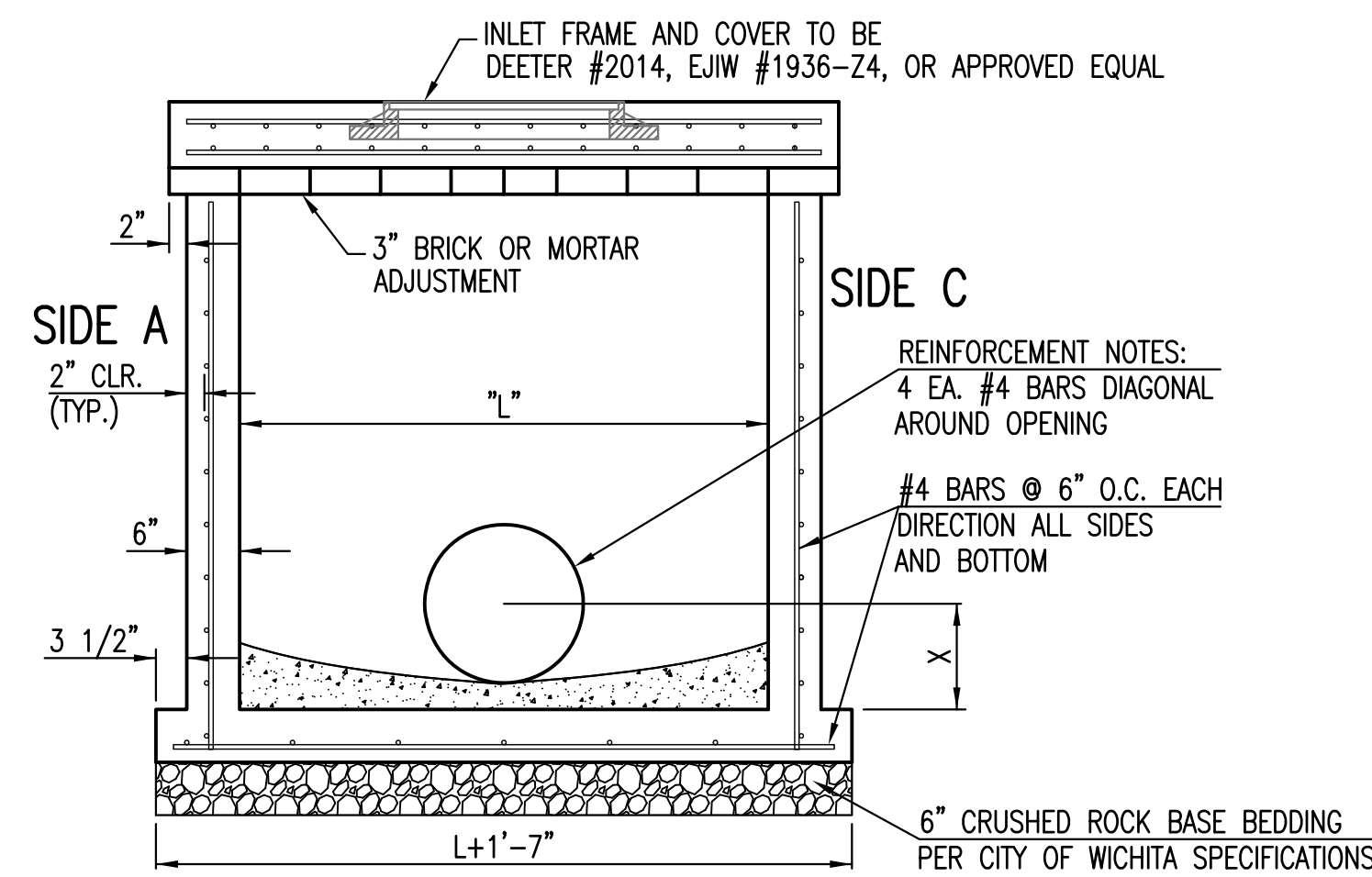
BAR SCHEDULE		
INLET OPENING	B1 BARS	SPACING
5'-0"	#4	4"
10'-0"	#6	3.5"

PRECAST CURB INLET WIDTHS				
W	PRE-CAST TOP SIZE			PIPE DIA.**
	WIDTH	LENGTH	TOP	
3'-0"	W+8"	L+1'-4"	7 1/2"	21" & SMALLER
4'-0"	W+8"	L+1'-4"	7 1/2"	24" & 30"
5'-0"	W+8"	L+1'-4"	7 1/2"	36" & 42"
6'-0"	W+8"	L+1'-4"	7 1/2"	48" & 54"
7'-0"	W+8"	L+1'-4"	7 1/2"	60" & 66"

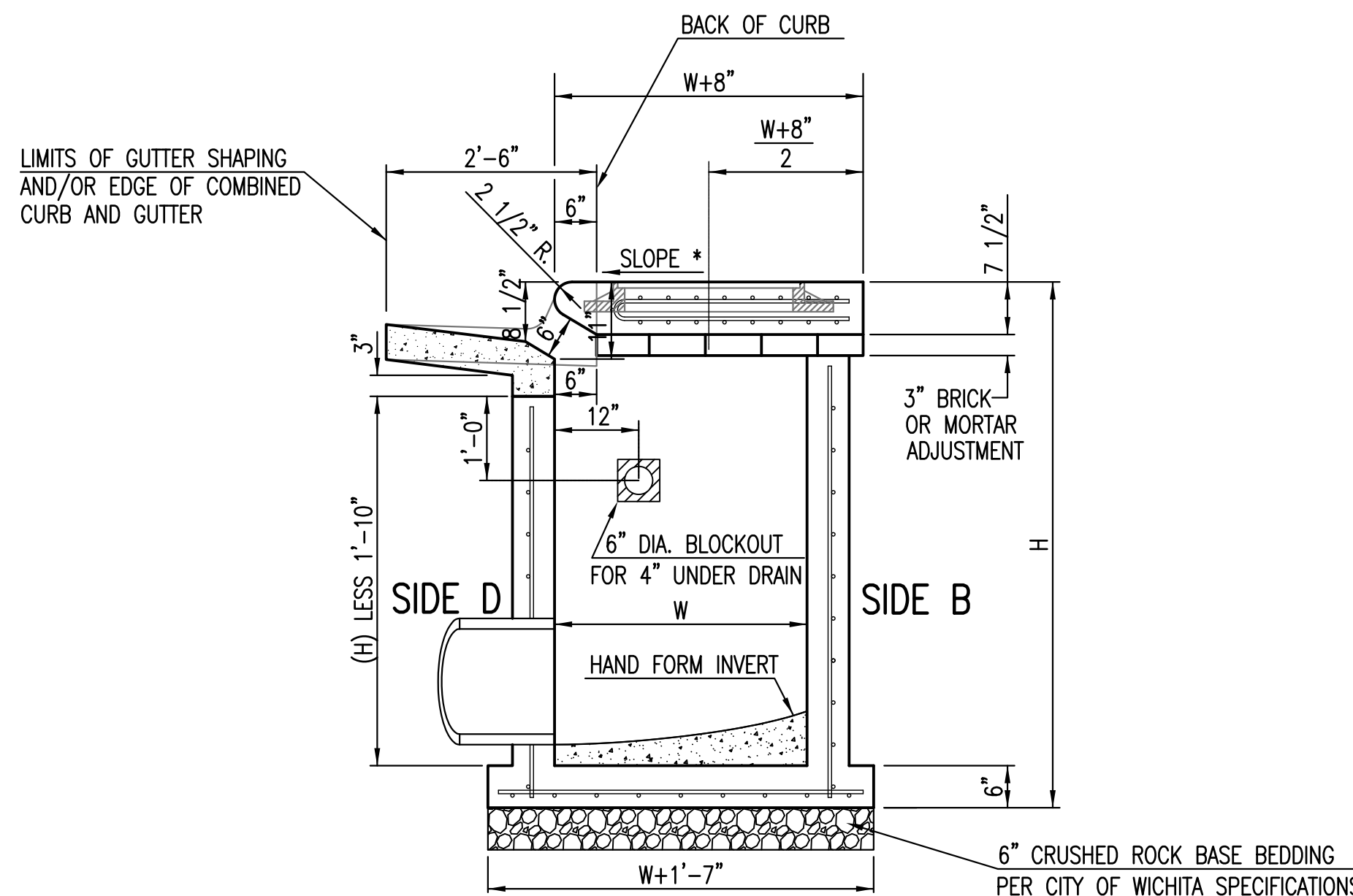
** FOR PIPES PERPENDICULAR TO INLET WALL

GENERAL NOTES

1. CONCRETE TOPS TO BE INSTALLED ON THIN MORTAR CUSHION TO INSURE FULL SUPPORT ALONG BRICK. CONCRETE TOPS MAY BE CAST IN PLACE OR PRECAST. CONCRETE USED FOR INLET CONSTRUCTION SHALL CONFORM TO CITY OF WICHITA SPECIFICATIONS FOR CONCRETE PAVEMENT MIX.
2. CONTRACTOR SHALL HAVE THE OPTION OF CONSTRUCTING 8" BRICK MASONRY WALLS BETWEEN THE CONCRETE INLET BASE AND TOP OF THIS INLET WHEN W=5'-0" AND H=7'-0" OR LESS.
3. INLET INVERT SHALL BE SHAPED WITH 8 SACK SAND MIX CONCRETE TO CREATE FLOW CHANNELS AND TO INCREASE HYDRAULIC EFFICIENCY SUCH THAT THE INLET WILL BE SELF CLEANING BETWEEN ALL INLET AND/OR OUTLET PIPES.
4. THE ENDS OF ALL PIPES INSTALLED IN INLETS SHALL BE CUT OFF FLUSH WITH THE INSIDE FACE OF THE INLET WALL.
5. INLET FRAME AND COVER TO BE DEETER #2014, EJIW #1936 Z4, OR APPROVED EQUAL, SEE SW-303.
6. CONTRACTOR SHALL REMOVE LIFTING HOOKS AFTER INSTALLATION. RECESSES IN INLET WALL SHALL BE GROUDED FLUSH TO THE INLET WALL WITH HYDRAULIC CEMENT AFTER THE INLET IS IN PLACE. LIFTING HOLES THRU THE INLET WALL WILL NOT BE ACCEPTED.

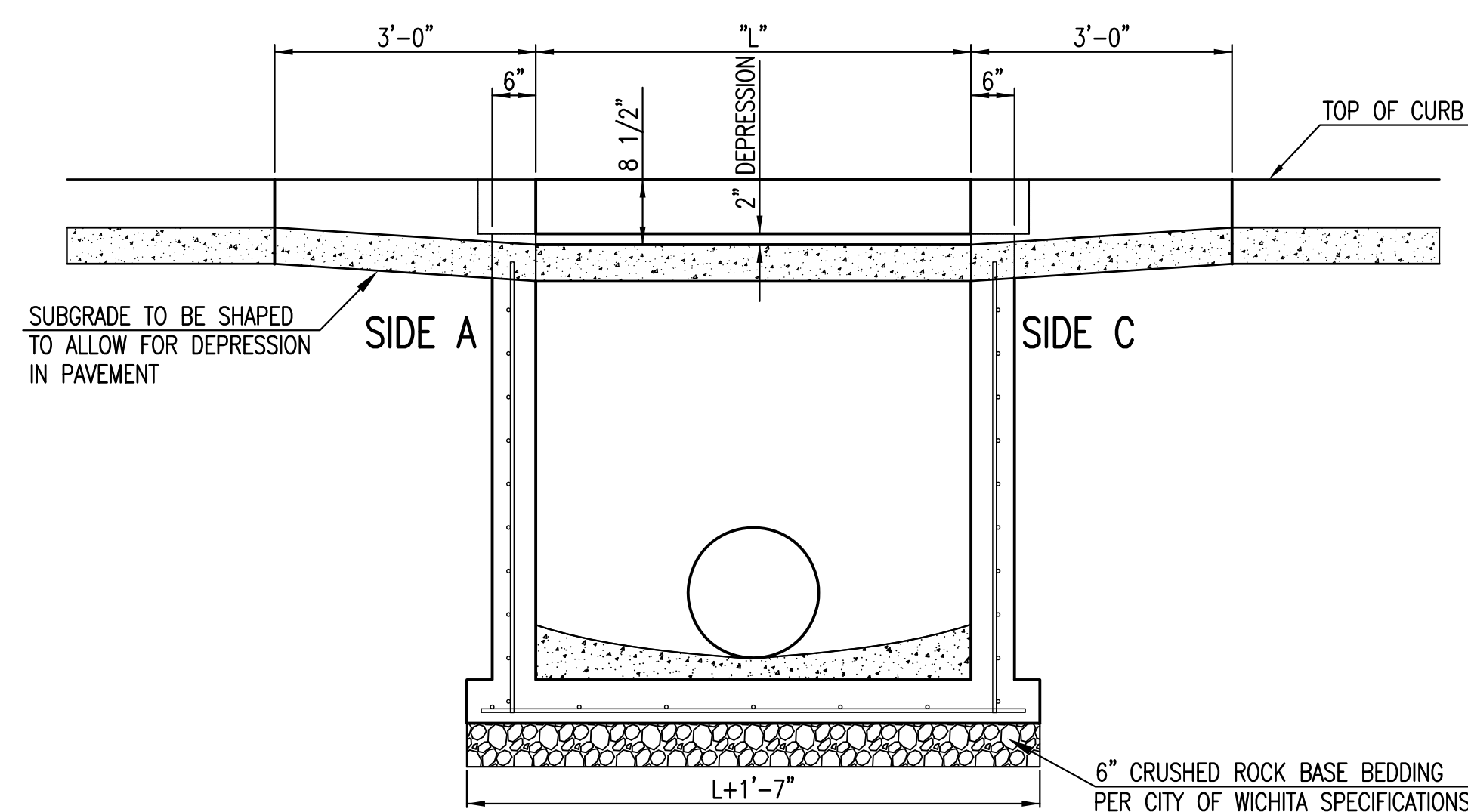
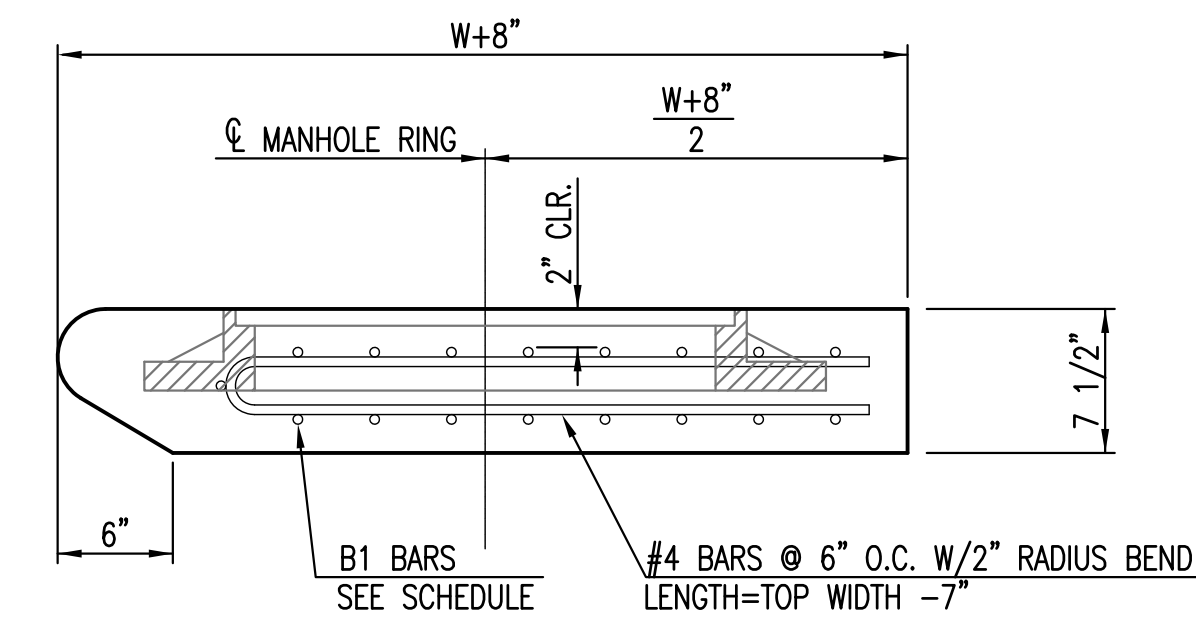


SECTION "A-A"

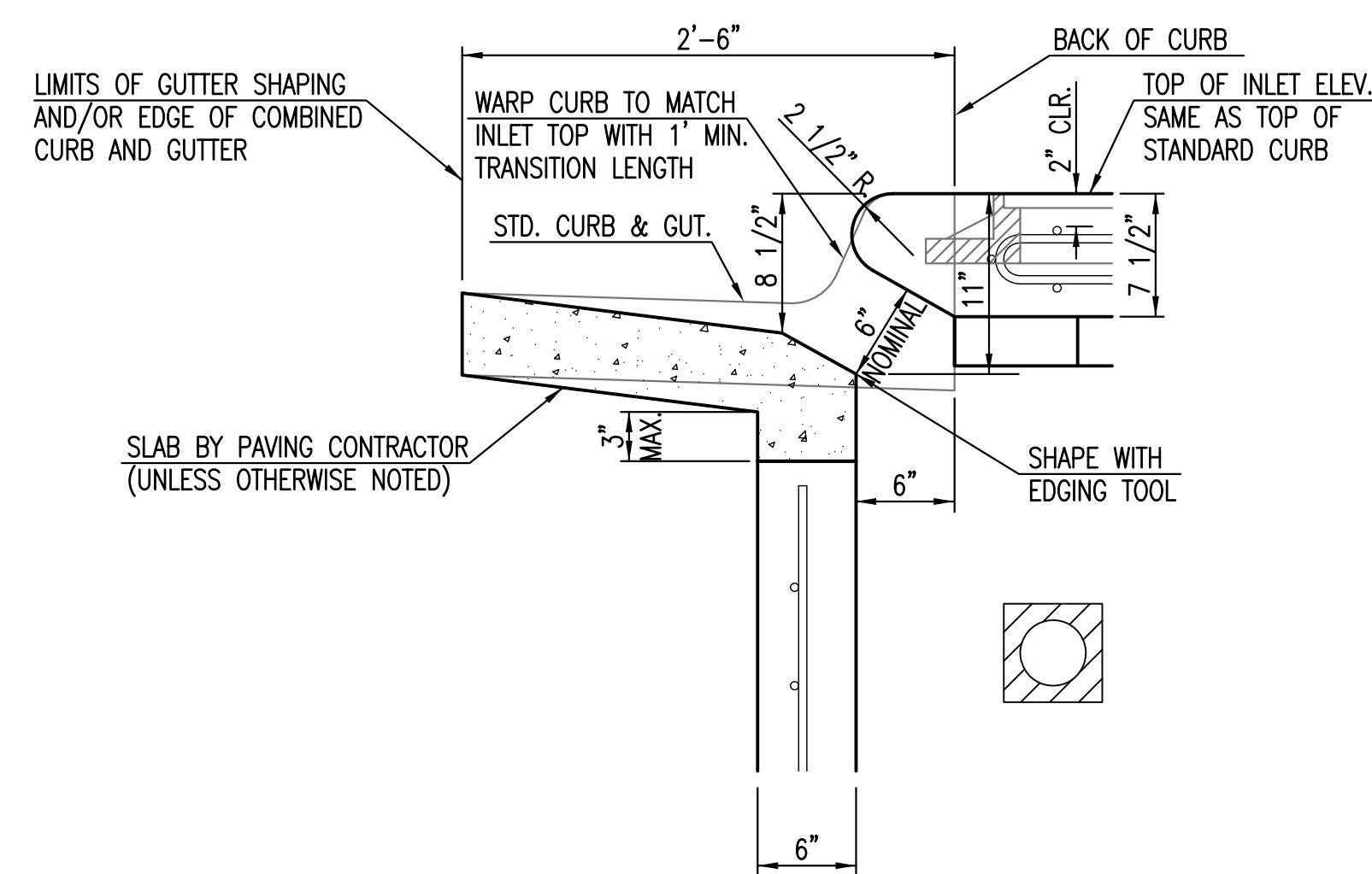


SECTION "C-C"

NOTES:
* SLOPE OF INLET TOP TO MATCH SIDEWALK OR PARKING SLOPES WITHIN LIMITS INDICATED.



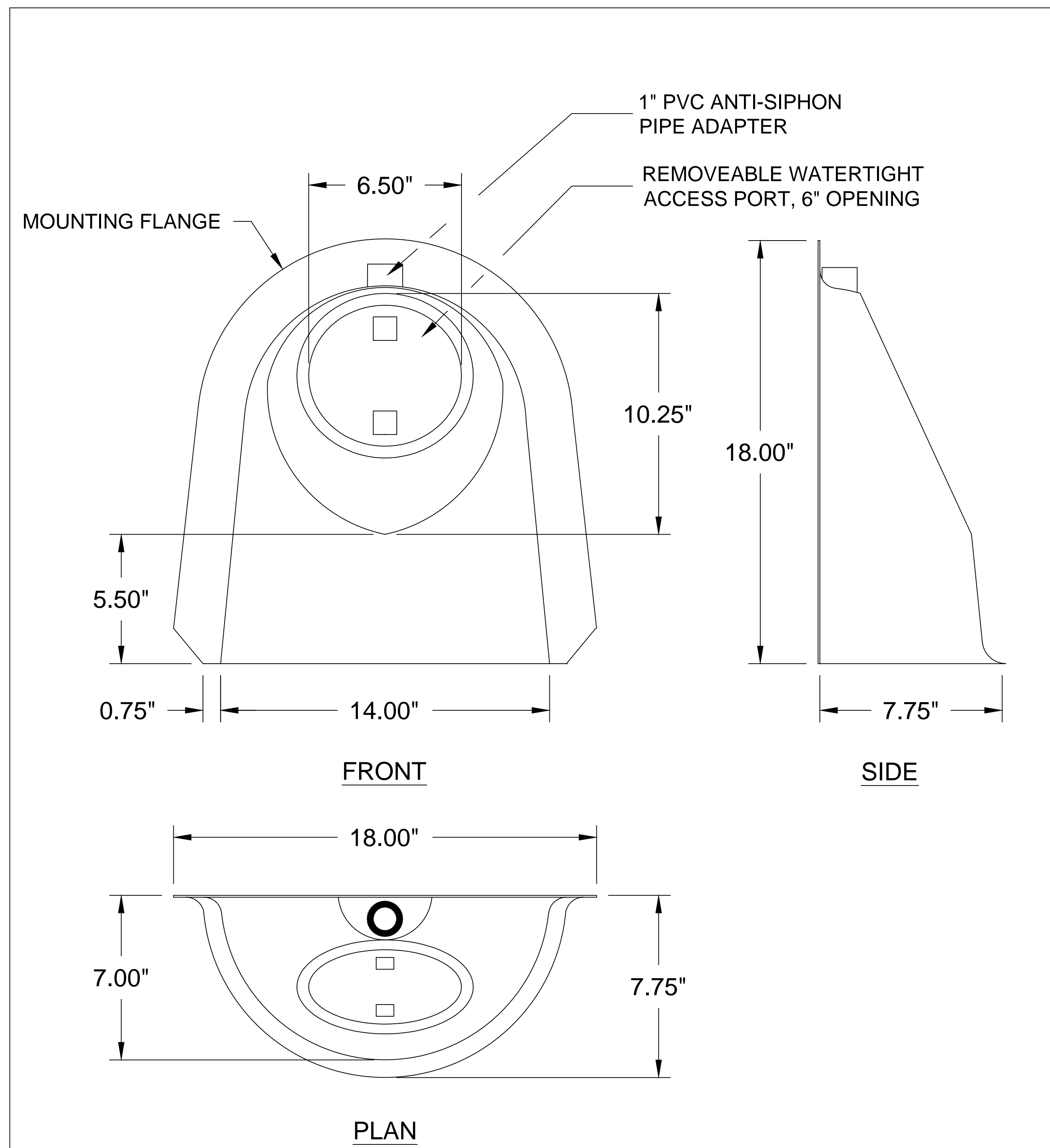
SECTION "B-B"



SECTION "D-D"



STANDARD TYPE 1 CURB INLET		
5'-0" OR 10'-0" OPENING		
CITY ENGINEER GARY JANZEN, P.E.		
PROJECT NUMBER 0329 PPD	OCA NUMBER 607861	DATE 11/2010
CITY ENGINEER'S OFFICE CITY HALL - SEVENTH FLOOR 455 NORTH MAIN STREET WICHITA, KANSAS 67202-1620 (316) 268-4501		SHEET 4.0



US PATENT #6126817 ADDITIONAL PATENTS PENDING

BMP, INC.

53 MT. ARCHER ROAD, LYME, CT. 06371
 (800) 504-8008 FAX: (860)434-3195

DESCRIPTION	DATE	SCALE
12F SNOUT OIL & DEBRIS STOP	09/01/99	NONE
DRAWING NUMBER		
12F		



DATE: 07.15.2015
 THIS SHEET HAS BEEN
 SIGNED, SEALED AND
 DATED ELECTRONICALLY


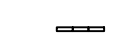

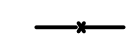


Greenwich Retail Center
Snout Detail
 Wichita, Kansas

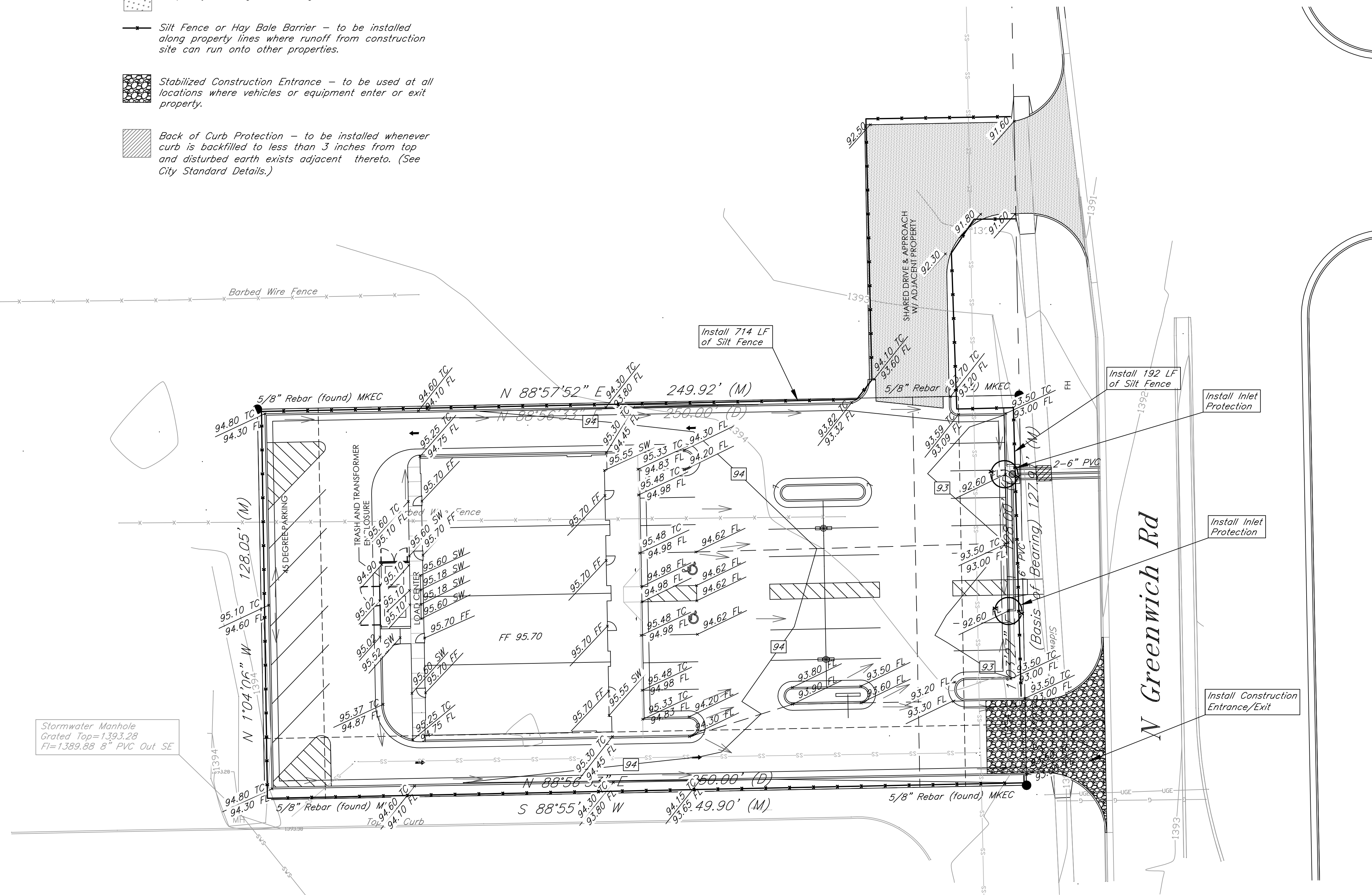
KEMILLER ENGINEERING PA 117 E. Lewis, Wichita, KS 67202 (316)284-0242	PROJECT NUMBER 0329 PPD (607861)			SHEET 4.1
	KEY NO. 14153	FILE	DATE 06/2015	
DESIGN KM	DRAWN MP	REVISED		

General Notes:

- The BMP's shown on this sheet are considered minimum standards. Whenever sediment enters the streets, storm sewers, ditches, or ponds, contractor will install additional BMP's, as needed, to correct the problem.
- The soil erosion BMP's shown hereon must be in place at all times during construction until such time as the site is re-established with paving or grass.
- Back of curb protection can include hay bale, silt fence, Curlex barrier, or approved alternate as shown on BMP standard details. This BMP must remain in place until the area between the curb and right-of-way line has been permanently stabilized.
- The General Contractor is responsible for the installation and maintenance per the prevention maintenance plan.
- Concrete trucks will be permitted to wash out only at approved locations, then maintain and clean up as conditions require, by contractor. No hazardous materials are expected to be encountered. Any spills (diesel, fuel, oil, etc.) will be cleaned up and removed immediately. Portable toilets will be supplied and maintained at various sites along the project. Disposal of sewage will be handled by a contracting firm specializing in this activity.
- The above mentioned storm water prevention methods will be monitored daily and maintained as required. A weekly erosion control log will be posted in the job trailer onsite, and updated weekly. Site inspections are required within 24 hours after a precipitation event of 0.5" or greater.

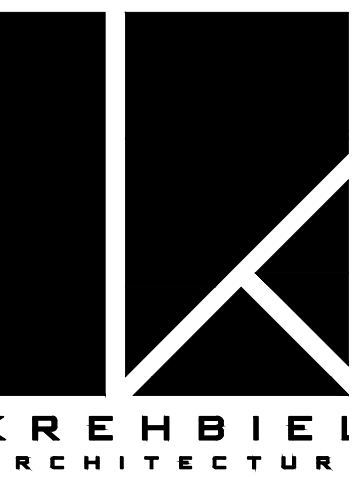
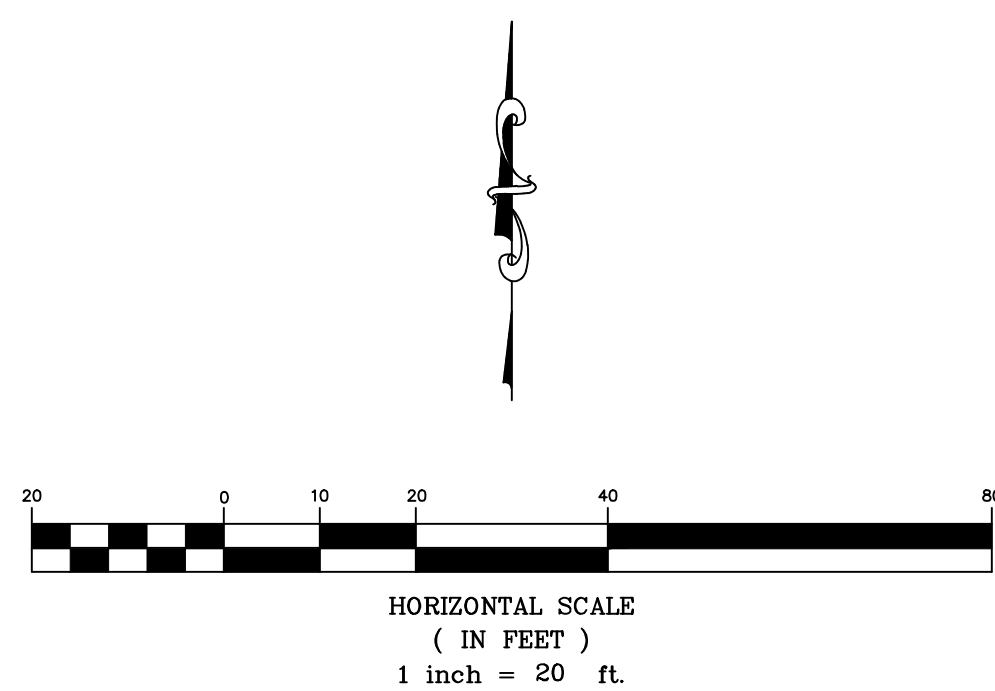
LEGEND:

- Flow Direction
-  Inlet Protection - to be provided at all inlets subject to silt laden runoff.
-  Ditch Check
-  Temporary Seeding and Mating.
-  Silt Fence or Hay Bale Barrier - to be installed along property lines where runoff from construction site can run onto other properties.
-  Stabilized Construction Entrance - to be used at all locations where vehicles or equipment enter or exit property.
-  Back of Curb Protection - to be installed whenever curb is backfilled to less than 3 inches from top and disturbed earth exists adjacent thereto. (See City Standard Details.)



Grading Legend:

- EL = Elevation
- FL = Flow Line
- TC = Top of Curb
- SW = Top of Sidewalk
- TP = Top of Pavement
- FF = Finish Floor
- Flow Arrows



1300 E. Lewis
Wichita KS 67211
316.247.8233
316.247.8566 fax
krehbielarchitecture.co



DATE: 05-28-2015
THIS SHEET HAS BEEN
SIGNED, SEALED AND
DATED ELECTRONICALLY

GATEWAY PLAZA
1095 N. GREENWICH ROAD
WICHITA, KS.

FINAL PLAT KISER WEST ADDITION AN ADDITION TO WICHITA SEDGWICK COUNTY, KANSAS

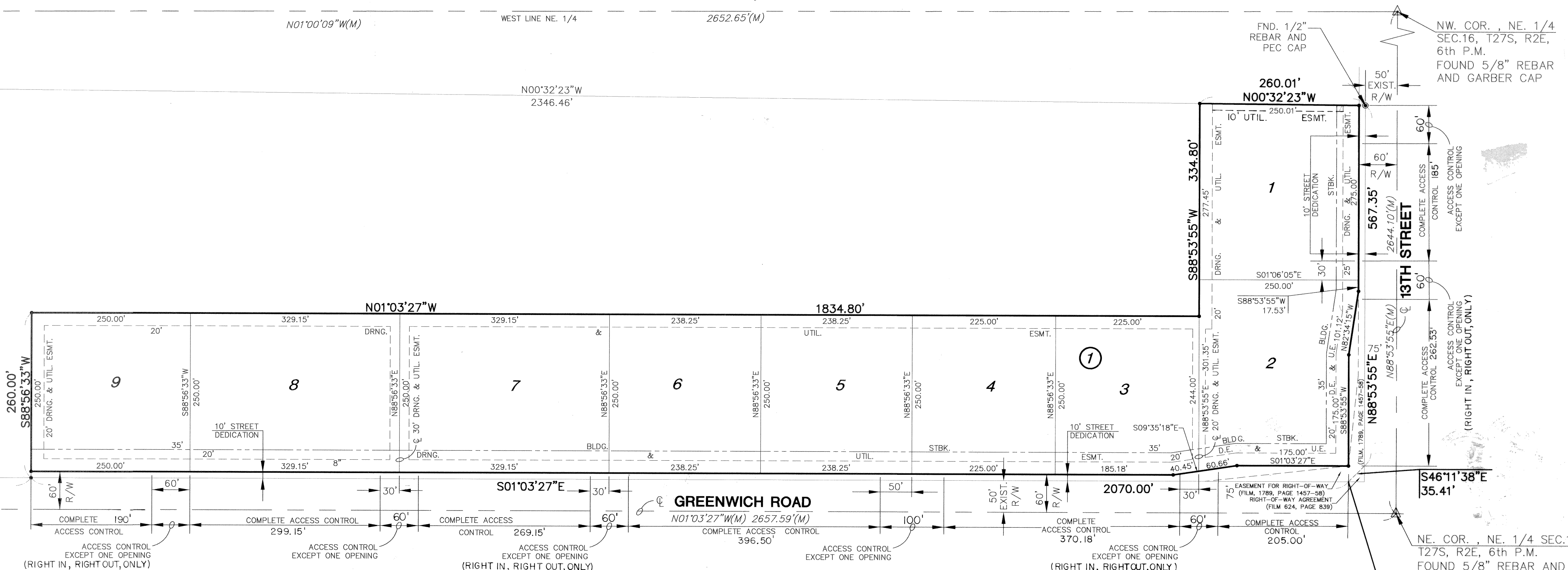
SW. COR., NE. 1/4 SEC.16,
T27S, R2E, 6th P.M.
FOUND CENTER OF SECTION
STONE

FOUND 1" PIPE 0.2'
SOUTH AND 0.3' EAST
OF DEEDED CORNER

SE. COR., NE. 1/4 SEC.16,
T27S, R2E, 6th P.M.
FOUND 3/4" PIPE

NW. COR., NE. 1/4
SEC.16, T27S, R2E,
6th P.M.
FOUND 5/8" REBAR
AND GARBER CAP

NE. COR., NE. 1/4 SEC.16,
T27S, R2E, 6th P.M.
FOUND 5/8" REBAR AND
GARBER CAP



I, Gregory J. Allison, a Registered Land Surveyor in Kansas, do hereby certify that I have been in responsible charge of surveying and platting of "KISER WEST ADDITION", an addition to Wichita, Sedgwick County, Kansas, into Lots, and a Block, the same being accurately set forth in the accompanying plat and described herein:

A tract of land lying in the Northeast Quarter, Section 16, Township 27 South, Range 2 East of the 6th Principal Meridian, Wichita, Sedgwick County, Kansas, more particularly described as follows:

Beginning at a point 75.00 feet South of the North line of said Northeast Quarter and 50.00 feet West of the East line of said Northeast Quarter; thence on a Kansas South-Zone Grid bearing of S01°03'27"E, 2070.00 feet parallel with the East line of said Northeast Quarter; thence S88°56'33"W, 260.00 feet; thence N01°03'27"W, 1834.80 feet; thence S88°53'55"W, 334.80 feet; thence N00°32'23"W, 260.01 feet to a point 50.00 feet South of said North line; thence N88°53'55"E, 567.35 feet to a point 75.10 feet West of said East line; thence S46°11'38"E, 35.41 feet along a Right Of Way Agreement set forth on Film 624, Page 839 to the point-of-beginning.

I hereby certify that the details of this plat are correct to the best of my knowledge and belief this 9th day of November, 2001.



Gregory J. Allison, PE #11189
MKEC Engineering Consultants, Inc.
411 North Webb Road
Wichita, Kansas 67206

Know all men by these presents that we the undersigned property owners of the land above set forth in the Registered Land Surveyor's Certificate, have caused the same to be surveyed and platted into Lots, and a Block, the same to be known as "KISER WEST ADDITION", an addition to Wichita, Sedgwick County, Kansas. Easements for the construction and maintenance of public utilities, and drainage, as indicated on the accompanying plat are hereby granted. The streets are hereby dedicated to and for the use of the public. A drainage plan has been developed for this plat and all drainage easements, right-of-way, or reserves shall remain at established grades or as modified with the approval of the applicable City or County Engineer, and unobstructed to allow for the conveyance of storm water. All abutters right of access to or from 13th Street East over and across the North line of "KISER WEST ADDITION", are hereby granted to the appropriate governing body, as indicated on the face of the plat. All abutters right of access to or from North Greenwich Road over and across the East line of "KISER WEST ADDITION", are hereby granted to the appropriate governing body, as indicated on the face of the plat. This plat is subject to the conditions of the Kiser West Community Unit Plan (CUP 2000-21, DP-254).

Kiser Inc., a Kansas Corporation

A. Dwayne Broddle
A. Dwayne Broddle, President

STATE OF KANSAS)
) ss.
SEDGWICK COUNTY)

BE IT REMEMBERED, that on this 15th day of November, 2001, before me the undersigned, a Notary Public in and for the County and State aforesaid, came A. Dwayne Broddle, President Kiser Inc. to me personally known to be the same person who executed the foregoing instrument of writing and duly acknowledged the execution of the same.

IN WITNESS WHEREOF, I have hereunto set my hand and affixed my official seal, the day and year last above written.

Krista L. Peterson, Notary Public

Krista L. Peterson
Notary Public
My appointment expires: 9-21-2003

This plat of "KISER WEST ADDITION", has been submitted to and approved by the Wichita-Sedgwick County Metropolitan Area Planning Commission, Wichita, Kansas.
Dated this 9th day of August, 2001.

WICHITA-SEDGWICK COUNTY METROPOLITAN PLANNING COMMISSION

J. Michaelis, Acting Chair

Marvin S. Krout, Secretary

This plat approved and all dedications shown thereon, if any, accepted by the City Council of the City of Wichita, Kansas, this 15 day of January, 2002

At the Direction of the City Council
Chris Chesher, City Manager

Kathy Pewewardy, City Clerk
Pat Burnett, City Clerk
Kathy Pewewardy

Entered on transfer record this 29th day of January, 2002

Don Brace, County Clerk
Don Brace, County Clerk

STATE OF KANSAS)
) ss:
SEDGWICK COUNTY)

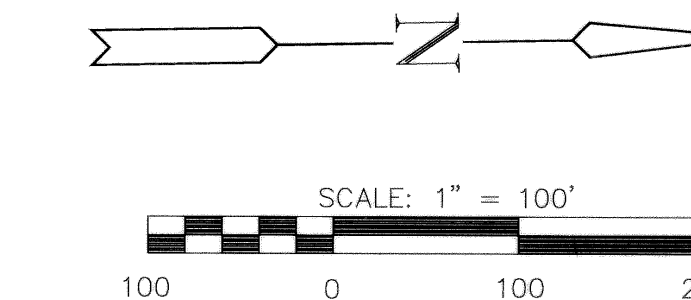
This is to certify that this instrument was filed for record in the Register of Deeds office this 29th day of January, 2002, at 1:40 o'clock P.M.; and is duly recorded.

Bill Meek, Register of Deeds
Bill Meek, Register of Deeds

Linda Kizzire, Deputy
Linda Kizzire, Deputy

Reviewed in accordance with K.S.A. 58-2005 on this 6th day of November, 2001.

Tricia L. Robello, Deputy County Surveyor
Tricia L. Robello, LS #1246
Deputy County Surveyor
Sedgwick County, Kansas



- = FOUND 1/2" REBAR AND PEC CAP
- = SET 5/8" REBAR/MKEC CLS 39
- △ = FOUND SECTION CORNER MONUMENT
- (M) = MEASURED DIMENSION
- U.E. = UTILITY EASEMENT
- D.E. = DRAINAGE EASEMENT

20.00
C.A.