

# LATERAL 2, MAIN 22 FOUR MILE CREEK SEWER

to serve

## Brentwood South Addition

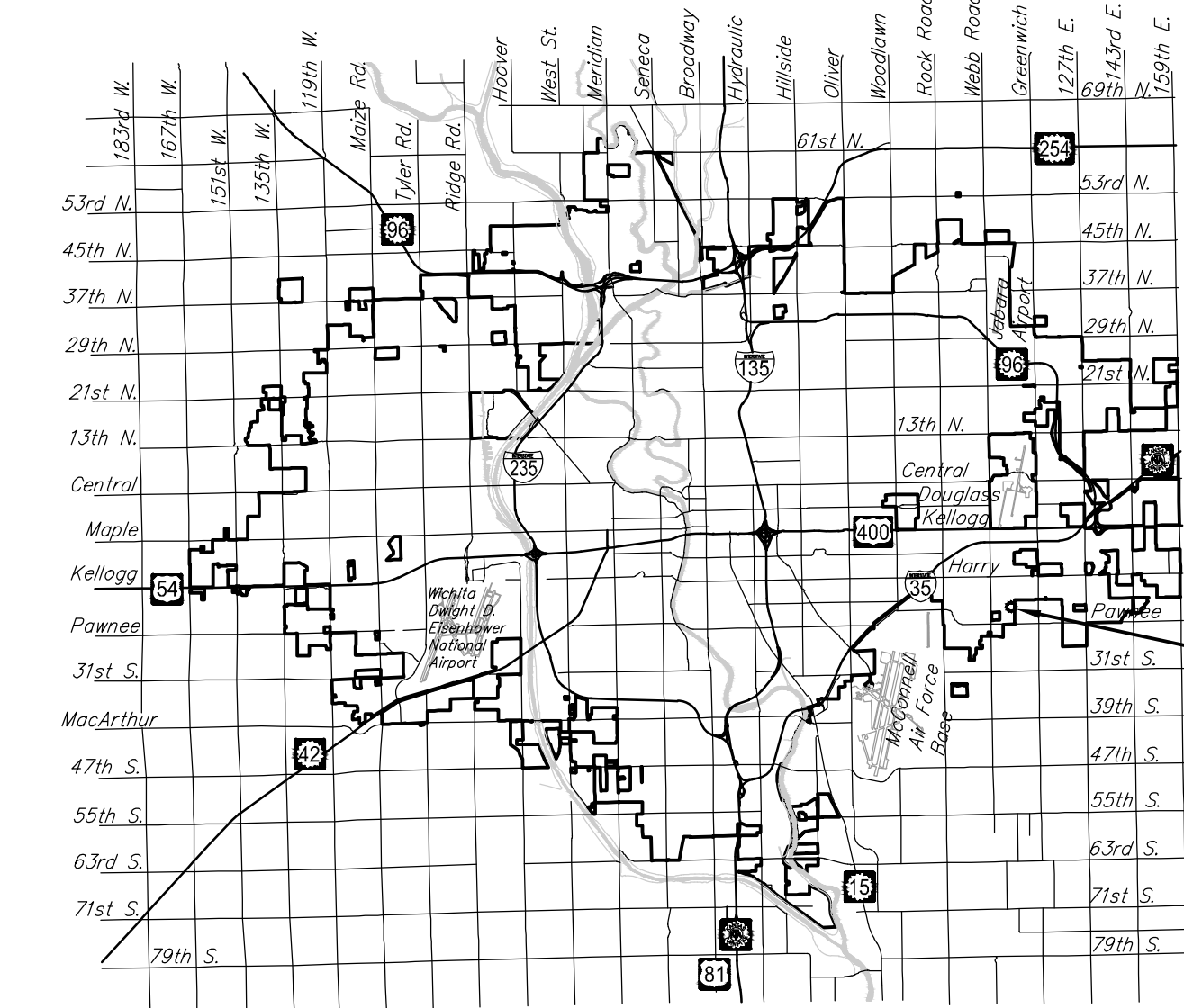
CITY OF WICHITA, KANSAS

Gary Janzen, P.E. City Engineer

Project Number 448-85029 468-85029

O.C.A. NO. 744396

McCullough Excavation - Contractor  
 J. Wagner - City of Wichita, Field Project Engineer  
 K. Yale - City of Wichita, Inspector  
 As-built  
 Risers  
 Release Date: 02/02/2016  
 pdf: apr 3/2/2016



PROJECT LOCATION

Vicinity Map

### GENERAL NOTES:

- The Contractor shall comply with all applicable safety regulations. All construction shall be completed following current City Standard Specifications and Special Provisions.
- Contractor will be required to provide notice to utility companies a minimum of seventy-two (72) hours prior to any excavation, as follows:

Kansas One-Call 687-2470

The Contractor must notify the following in case of an emergency:

AT&T	1-800-286-8313
Butler Rural Electric Coop	321-9600
Cox Communications	260-7204
Kansas Gas Service	1-888-482-4950
Southern Star Central Gas	316-303-7800
Westar	383-8600
City of Wichita Water Department	262-6000
City of Wichita Sewer Maintenance	262-6000

- Utility service lines, poles, etc. are to be adjusted as necessary by others prior to construction unless the plans specifically call for their adjustment by the Contractor or unless the plans specifically identify a utility to be adjusted by its owner during construction. Existing utilities and their location, as shown on the plans, represent the best information obtainable for design. The Contractor will be required to work around existing utilities within the right-of-way which do not conflict with proposed construction.

- Rubble from the removal of miscellaneous structures and excess excavation which is to be wasted shall be disposed of on sites to be provided by the Contractor. These sites shall be approved by the Engineer as to suitability, appearance and site location. Locations, in the opinion of the Engineer, that will leave an unsightly appearance will not be approved. All disposal sites must be approved by the Kansas Department of Health and Environment. Material either stockpiled or disposed of in a flood plain will require a Kansas State Board of Agriculture permit. Any material dumped in waters of the United States or wetlands is subject to U.S. Corps. of Engineers permitting regulations. Any material buried or stockpiled beyond approved construction limits will require additional archaeological investigations unless buried in a previously approved borrow location.

- Trees and shrubs in public right-of-way which are in direct conflict with proposed new construction shall be removed by the Contractor with the Engineer's approval. Trees and shrubs which are not in direct conflict with proposed new construction shall be saved and protected from damage.

- The Contractor shall give all property owners and/or tenants of developed property abutting the construction of this project a minimum of ten (10) days notice prior to start of construction.

- The Contractor shall be responsible for preserving property irons. The Contractor will be required to re-establish any property irons which are damaged or destroyed by his construction operations. Such irons shall be re-established by a licensed land surveyor in accordance with state laws.

- If traffic will be impacted by construction, a traffic control plan must be submitted and approved by the City Traffic Engineer, Brian Coon at [traffic@wichita.gov](mailto:traffic@wichita.gov) before construction can begin. The Contractor shall be responsible for all traffic control measures to facilitate construction. All construction zone markings and signage shall conform to the latest version of the Manual on Uniform Traffic Control Devices (MUTCD) as published by the US Dept. of Transportation, Federal Highway Administration. All costs associated with construction markings and signage shall be the Contractors responsibility.

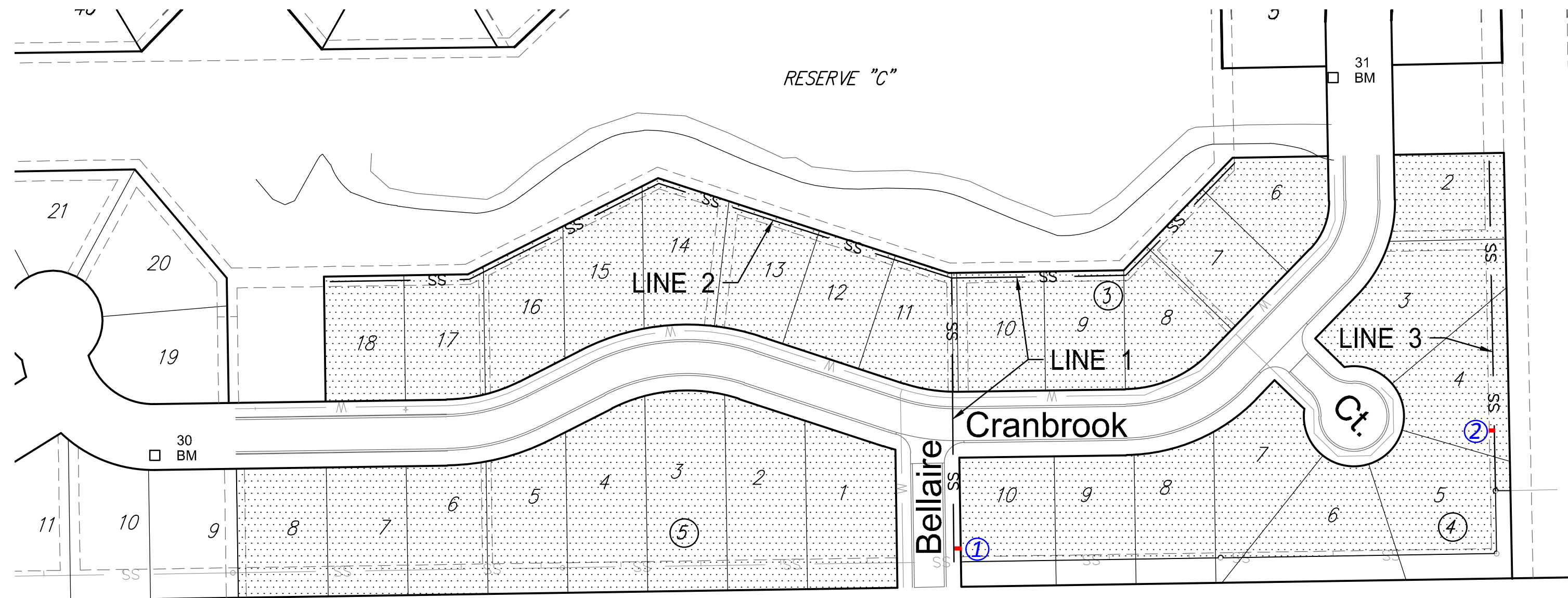
- All elevations shown are NAVD 88.

- All areas disturbed during construction that will not be under proposed pavement shall be restored to match existing conditions.

- The Contractor shall protect from damage and support existing utilities through constructions as approved by the utility owner and the Engineer at the contractors expense.

- Contractor shall limit the extent of trench openings overnight and weekends to less than 50 feet.

- Any sidewalk, drive approach, curb, or street pavement removed to construct project must have a pavement cut permit and be replaced by the City contractor. Permits can be obtained by calling 316-268-4501 or 316-268-4480.



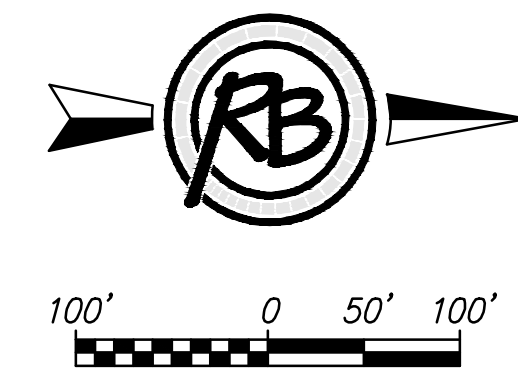
### Sheet Index

- TITLE SHEET
- PLAN & PROFILES
- PRECAST SS MANHOLE DETAILS
- MH FRAME & COVER DETAILS
- VERTICAL RISER DETAILS
- EASEMENT GRADING PLANS
- EROSION CONTROL PLAN
- EROSION CONTROL DETAILS
- SANITARY COORDINATE KEY MAP
- ADDITION COORDINATE KEY MAP
- PLAT

### Benchmarks

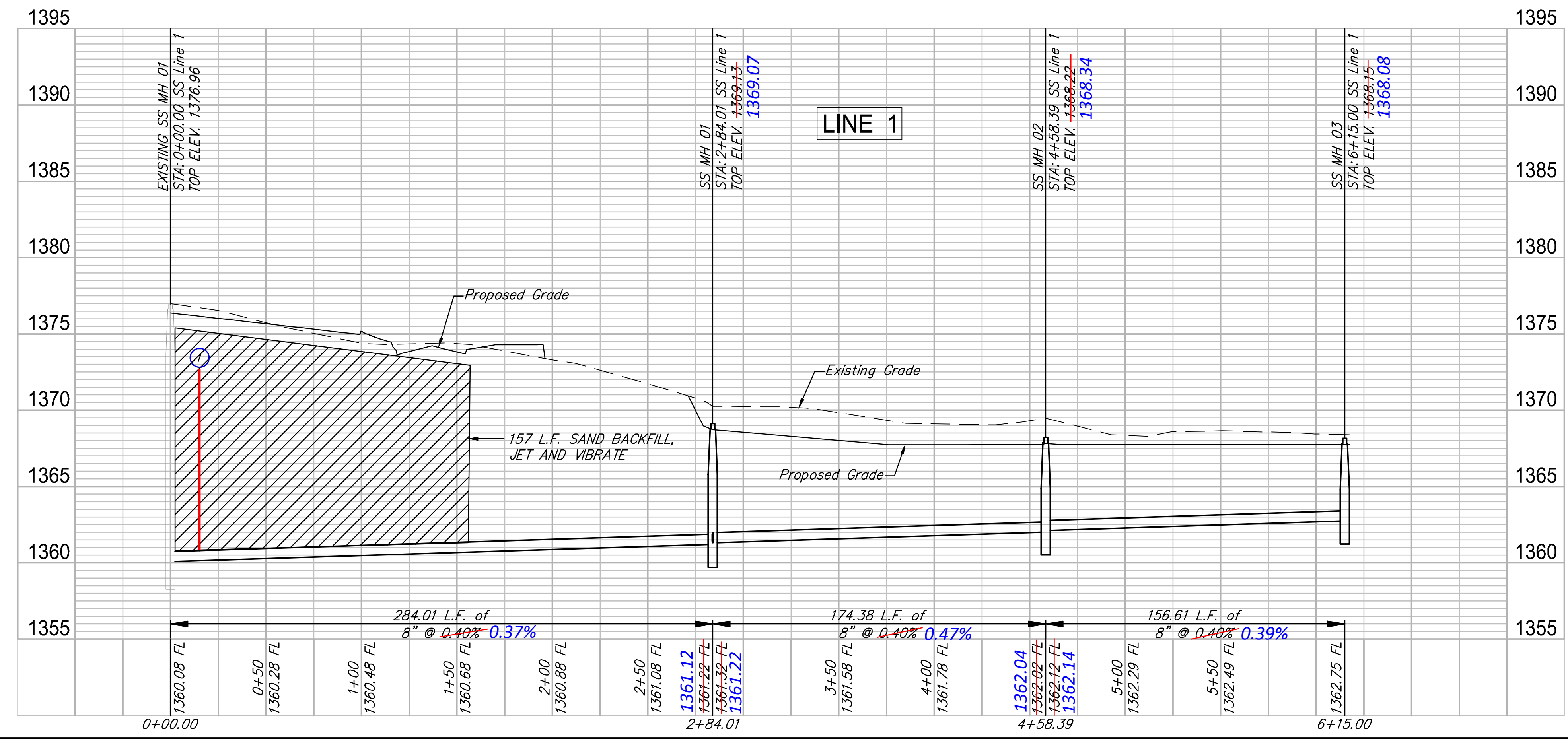
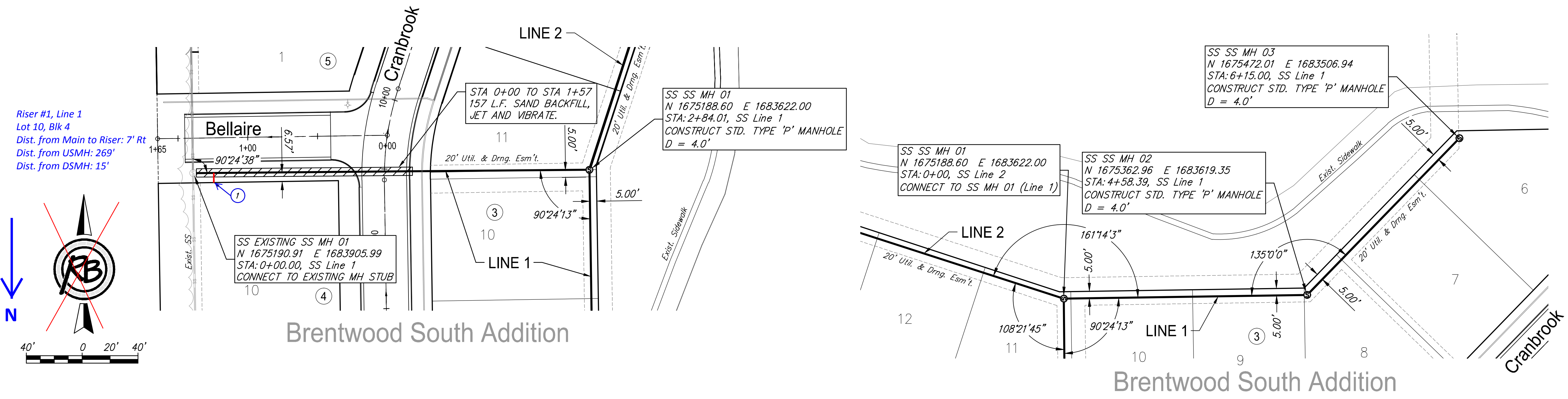
BENCHMARK:  
 POINT #30  
 CHISELED SQUARE ON THE TOP OF EAST CURB AT LOT LINE COMMON TO LOTS 9 & 10, BLOCK 5, BRENTWOOD SOUTH ADDITION.  
 ELEVATION = 1,382.11 (NAVD88)

BENCHMARK:  
 POINT #31  
 CHISELED SQUARE ON WEST END OF HEADWALL, 11' EAST AND 6' NORTH OF NORTHEAST CORNER OF LOT 5, BLOCK 3, BRENTWOOD SOUTH ADDITION.  
 ELEVATION = 1,369.48 (NAVD88)



PLANS PREPARED BY  
**RUGGLES & BOHM**  
 ENGINEERING | SURVEYING | LANDSCAPE ARCHITECTURE | GOVERNMENT  
 924 NORTH MAIN WICHITA, KANSAS 67203 P (316) 264-8008 F (316) 264-6221  
 WWW.RBKANSAS.COM 4532E

SEWER SERVICE TABLE							
NUMBER	TYPE	SERVING			STATION/DIRECTION	FOR INFORMATION ONLY	
		LOT NO.	BLOCK NO.	LINE NO.		APPROX. LENGTH 4" PIPE	VERTICAL
1	8"x4" Saddle	10	4	1	0+15 Right	11.8	7.0

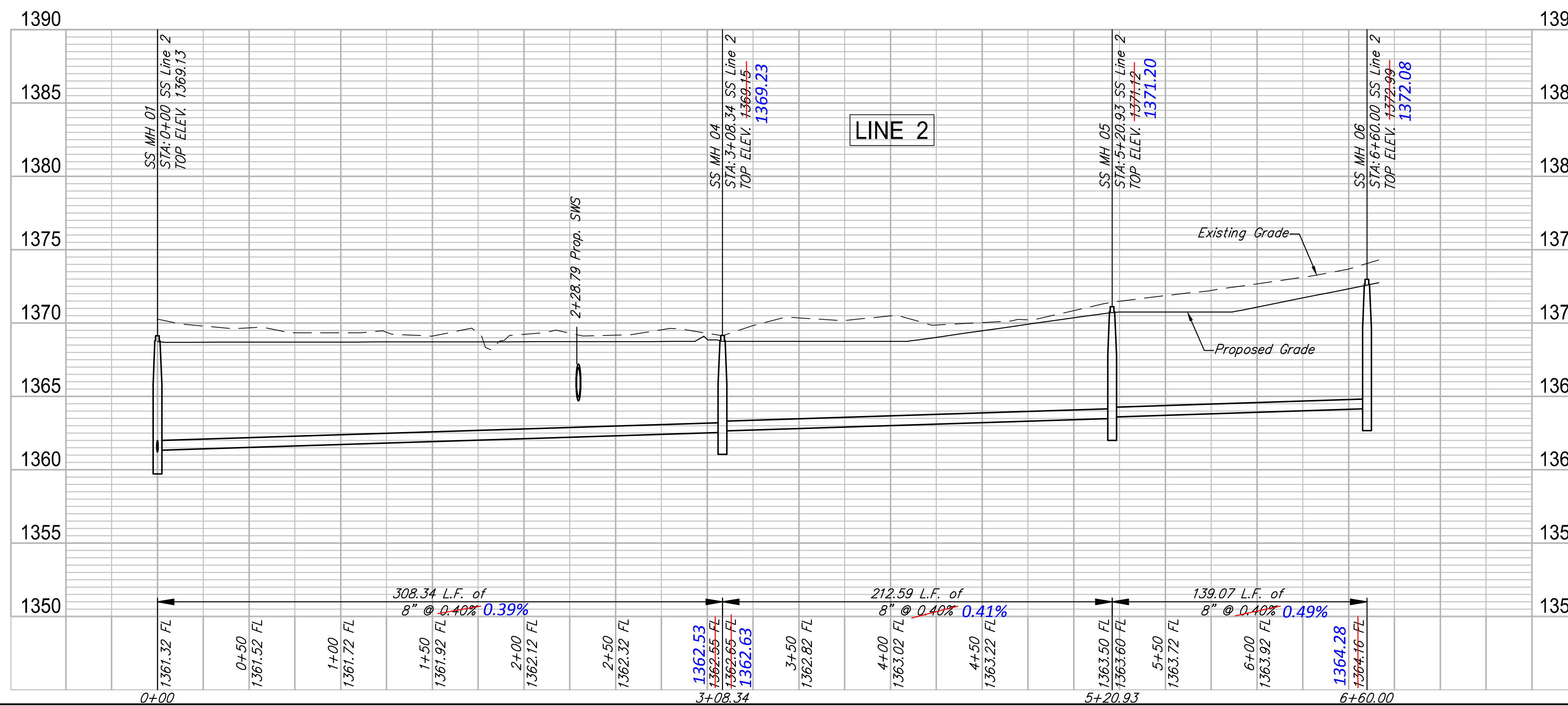
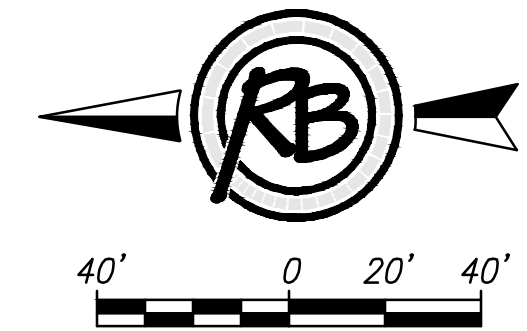
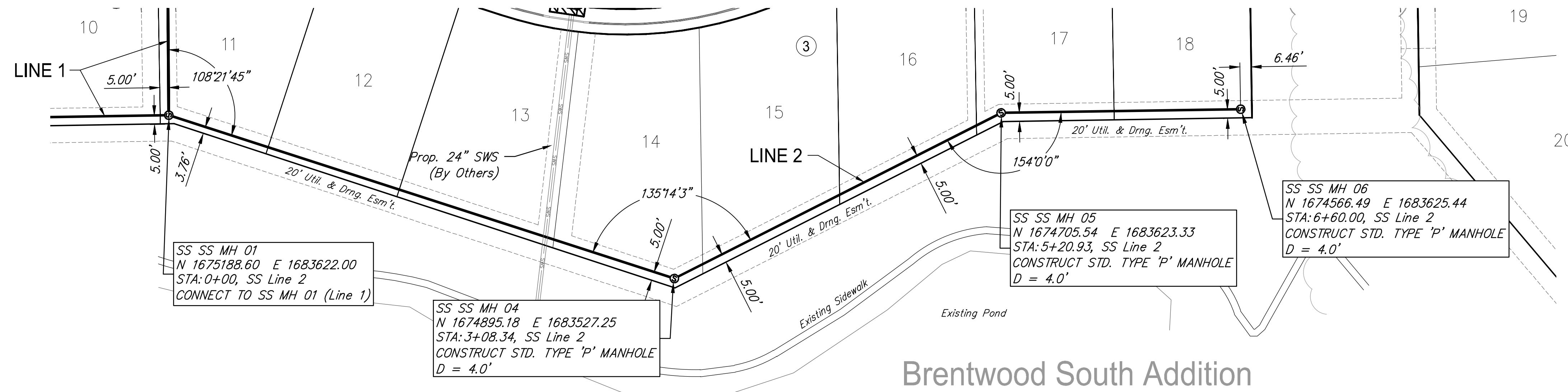


**Brentwood South Addition**  
**SS LINE 1**  
Wichita, Kansas

PROJECT NUMBER 448-85029	DESIGN EJG	REVIEW 7-1-2015
DRAWING FILE 4532E Brentwood South Ph 5 - Base	DRAWN DS	DATE

RB JOS  
4532E  
SHEET  
2  
OF  
18





**RUGGLES BOHM**  
 PROFESSIONAL ENGINEERS & ARCHITECTS

PROJECT NUMBER: 448-85029  
 DRAWING FILE: 4532E Brentwood South Ph. 5 - Base

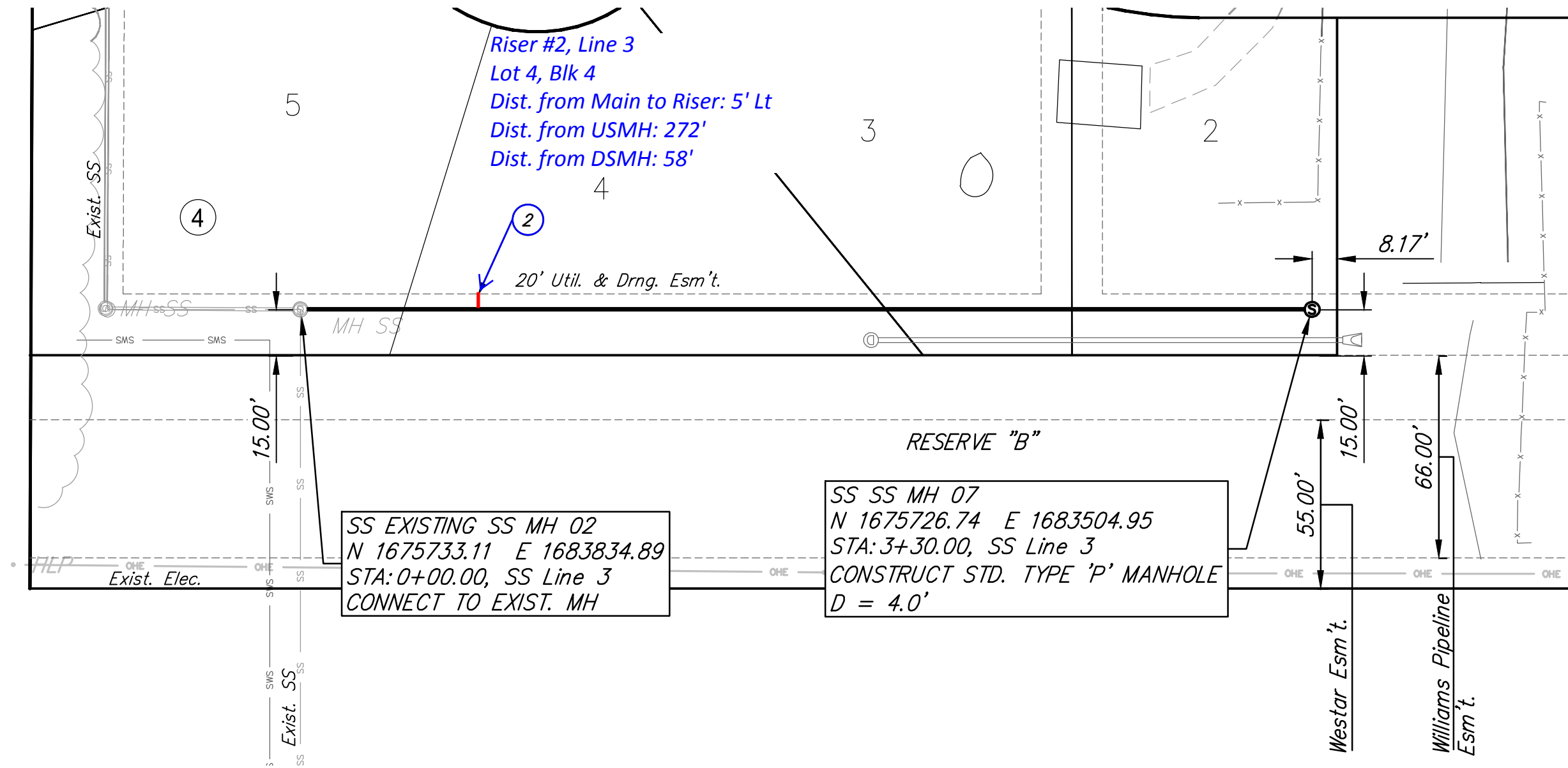
DESIGN: E/JG  
 DRAWN: DS

REVIEW: 7-1-2015  
 DATE:

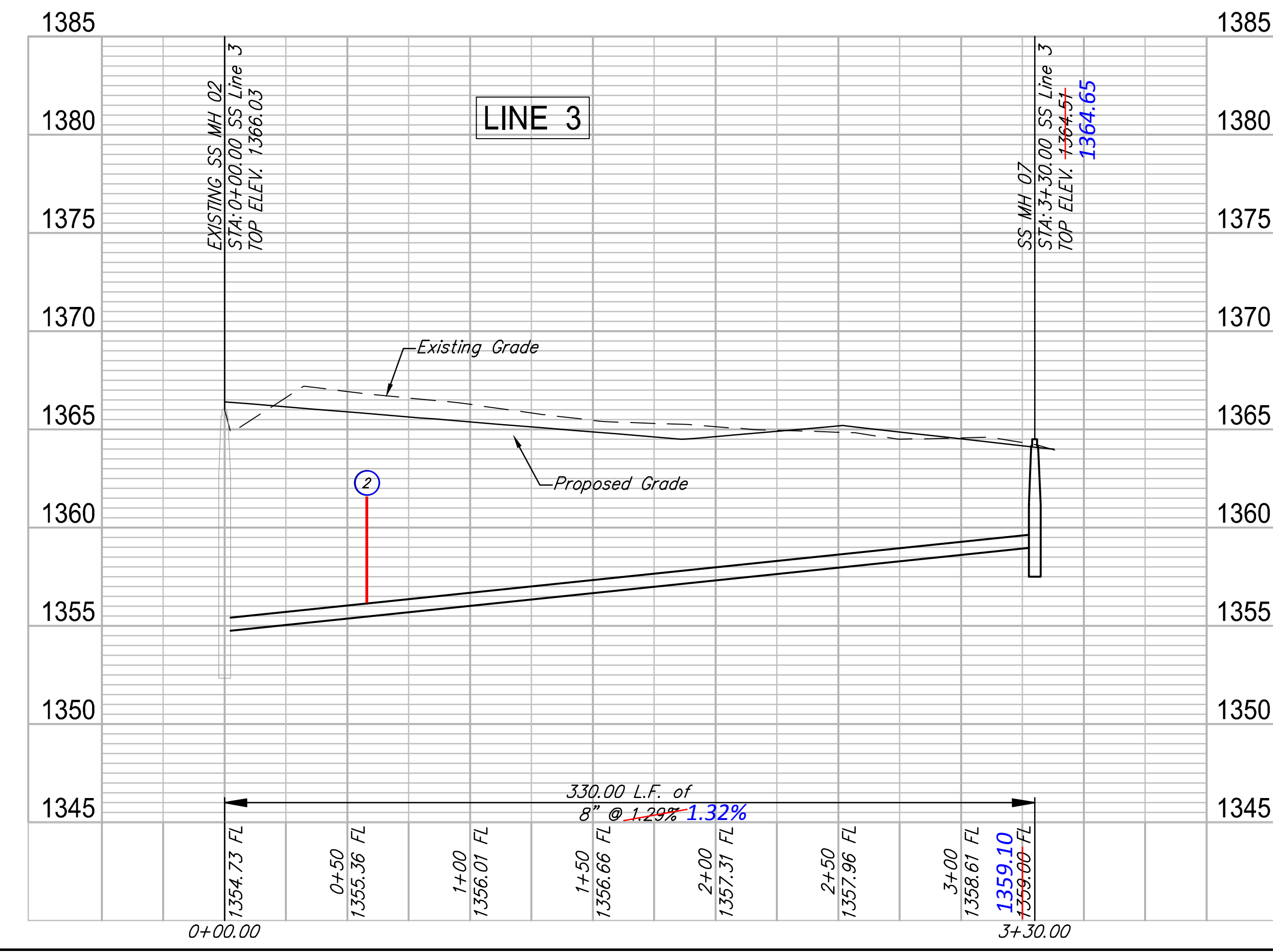
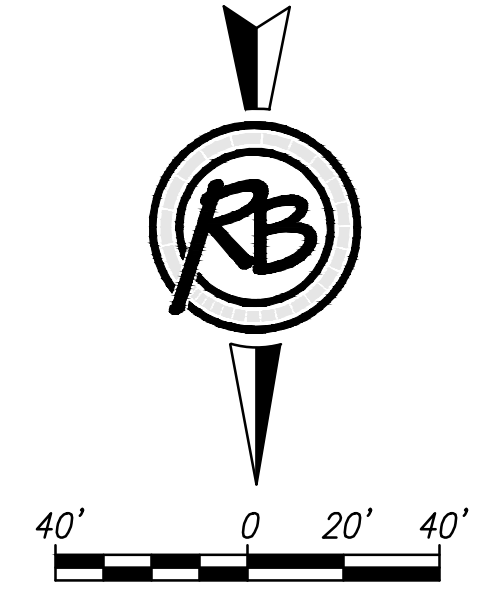
Brentwood South Addition  
**SS LINE 2**  
 Wichita, Kansas

PR. JOB: 4532E  
 SHEET: 3 OF 18

# Brentwood South Addition



SEWER SERVICE TABLE							
NUMBER	TYPE	SERVING			STATION/DIRECTION	FOR INFORMATION ONLY	
		LOT NO.	BLOCK NO.	LINE NO.		APPROX. LENGTH 4" PIPE	
2	8"x4" Saddle	4	4	3	0+58 Left	VERTICAL	5.4
						HORIZONTAL	AT 5.0



**RUGGLES BOHM**  
REGISTERED PROFESSIONAL ENGINEER - LANDSCAPE ARCHITECTURE | LANDSCAPE ARCHITECTURE | LANDSCAPE ARCHITECTURE | LANDSCAPE ARCHITECTURE

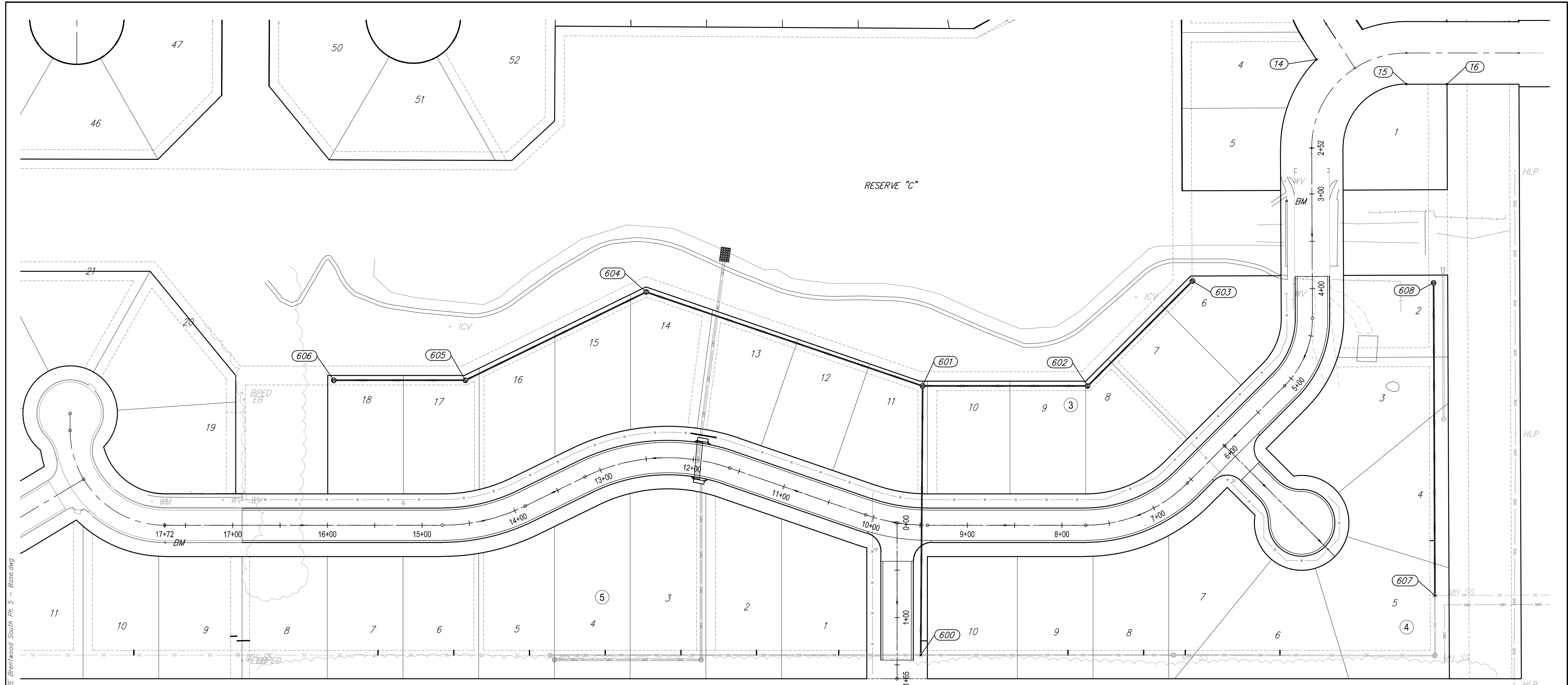
REVIEW: 7-1-2015  
 DATE

DESIGN: E.J.G.  
 DRAWN: DS

PROJECT NUMBER: 448-85029  
 DRAWING FILE: 4532E Brentwood South Ph 5 - Base

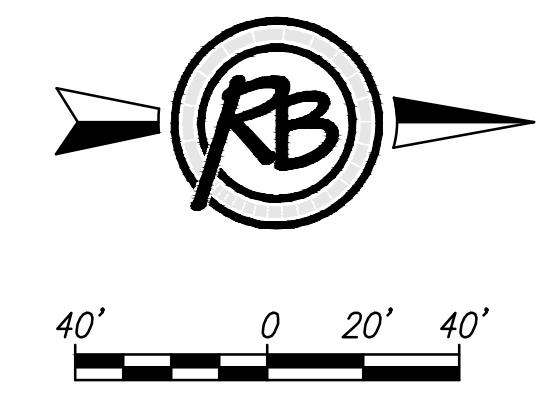
**Brentwood South Addition**  
**SS LINE 3**  
 Wichita, Kansas

RD JOB: 4532E  
 SHEET: 4 OF 18



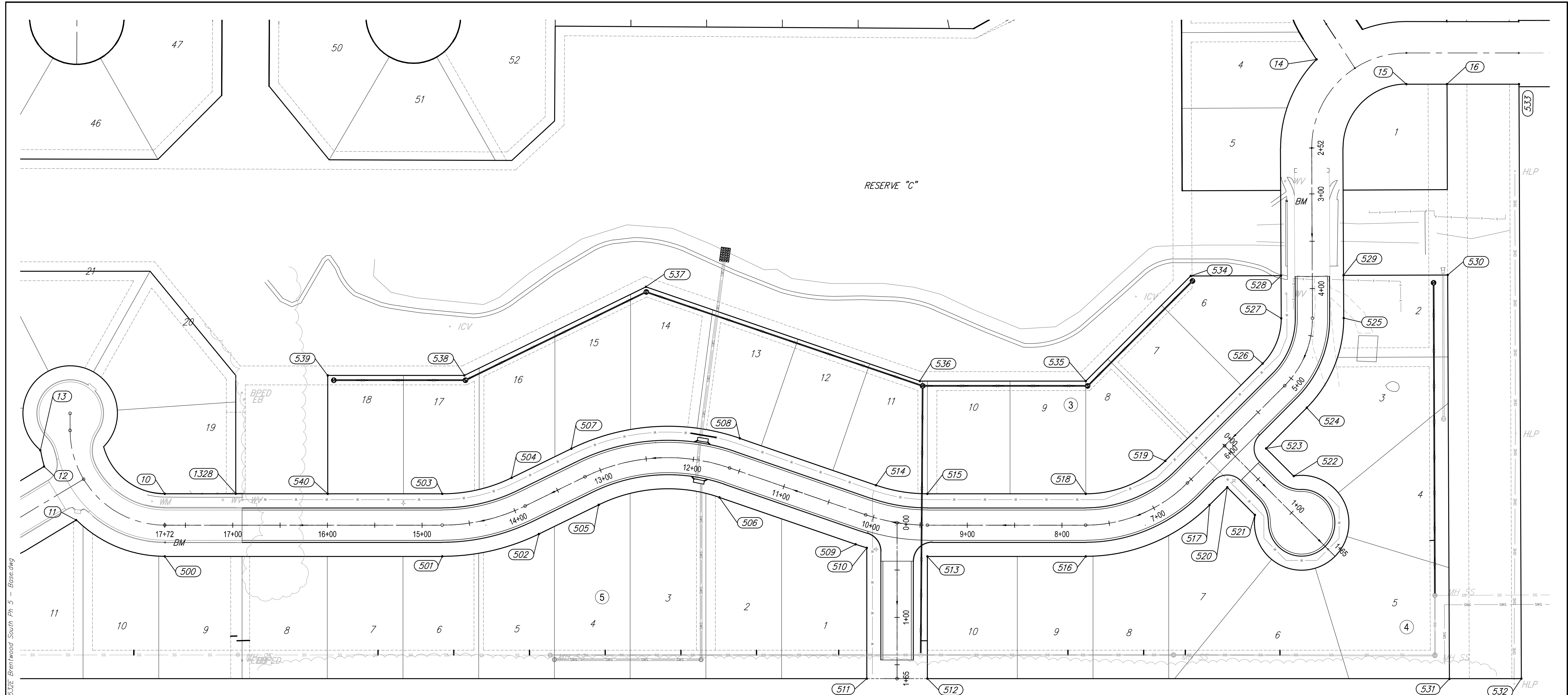
F:\Projects\Projects 4500-4599\4532E (Brentwood South Addition Ph 5 Engineering)\4532E Brentwood South Ph 5 - Base.dwg

Point Table			
Point #	Northing	Easting	Description
10	1674389.70	1683748.12	SM PLUS CUT
11	1674296.42	1683777.23	SM PLUS CUT
12	1674261.68	1683721.14	SM ARM 1/2
13	1674257.57	1683704.17	SM ARM 1/2
14	1675599.50	1683271.12	SM PLUS CUT
15	1675694.79	1683295.73	SM VNOTCH
16	1675737.63	1683295.14	SM VNOTCH
500	1674390.70	1683814.13	PT
501	1674683.83	1683809.68	PC



**Brentwood South Addition**  
**SS-Coordinates**

		<b>RUGGLES &amp; BOHM</b> <small>ENGINEERING   SURVEYING   LANDSCAPE ARCHITECTURE   GOVERNMENT</small> <small>924 NORTH MAIN WICHITA, KANSAS 67203 P (316) 264-8008 F (316) 264-4621</small> <small>WWW.RB-KANSAS.COM</small>	<small>DATE</small> <small>DESIGN</small> <small>DRAWN</small> <small>REVIEW</small>
	<small>PROJECT NUMBER</small> <b>448-85029</b>	<small>HW JOB NO.</small> <b>4532E</b>	<small>DWG. SCALE</small> ...
<small>DRAWING FILE</small> <b>4532E Brentwood South Ph 5 - Base [SS-Coordinates]</b>			<small>SHEET</small> <b>16</b> <small>OF</small> <b>18</b>



F:\Projects\Projects 4500-4599\4532E (Brentwood South Addition Ph 5 - Base.dwg) 4532E Brentwood South Ph 5 - Base.dwg

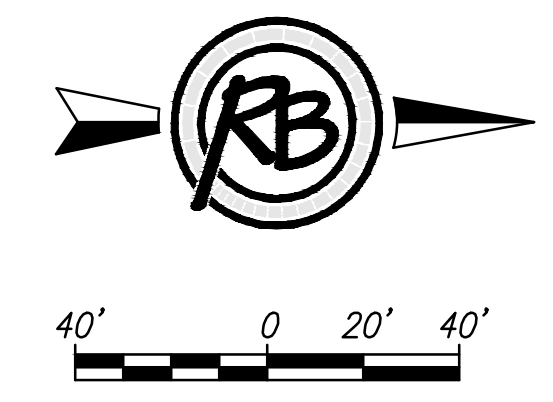
Point Table			
Point #	Northing	Easting	Description
10	1674389.70	1683748.12	SM PLUS CUT
11	1674296.42	1683777.23	SM PLUS CUT
12	1674261.68	1683721.14	SM ARM 1/2
13	1674257.57	1683704.17	SM ARM 1/2
14	1675599.50	1683271.12	SM PLUS CUT
15	1675694.79	1683295.73	SM VNOTCH
16	1675737.63	1683295.14	SM VNOTCH
500	1674390.70	1683814.13	PT
501	1674683.83	1683809.68	PC
502	1674785.60	1683784.55	PT
503	1674682.83	1683743.69	PC
504	1674755.77	1683725.68	PT

Point Table			
Point #	Northing	Easting	Description
505	1674848.32	1683752.78	PC
506	1674975.77	1683743.04	PT
507	1674818.49	1683693.90	PC
508	1674996.30	1683680.31	PT
509	1675120.29	1683790.36	PC
510	1675132.20	1683793.91	Block Corner
511	1675134.30	1683931.86	Block Corner
512	1675198.29	1683930.89	Block Corner
513	1675196.33	1683801.90	Block Corner
514	1675140.83	1683727.64	PC
515	1675195.33	1683735.91	PT
516	1675363.62	1683799.36	PC

Point Table			
Point #	Northing	Easting	Description
517	1675493.60	1683743.19	PT
518	1675362.62	1683733.37	PC
519	1675446.23	1683697.24	PT
520	1675512.07	1683724.15	Block Corner
521	1675541.69	1683752.89	Block Corner
522	1675582.07	1683711.26	Block Corner
523	1675552.45	1683682.52	Block Corner
524	1675594.80	1683638.88	PC
525	1675632.31	1683543.71	PT
526	1675547.42	1683592.92	PC
527	1675566.32	1683544.98	PT
528	1675565.45	1683499.89	Block Corner

Point Table			
Point #	Northing	Easting	Description
529	1675631.44	1683498.62	Block Corner
530	1675741.58	1683496.49	Block Corner
531	1675749.80	1683922.82	Block Corner
532	1675825.79	1683921.36	Addition Corner
533	1675813.70	1683294.02	Addition Corner
534	1675470.10	1683501.73	Block Corner
535	1675360.81	1683614.38	Block Corner
536	1675185.49	1683617.04	Block Corner
537	1674894.77	1683521.85	Block Corner
538	1674704.31	1683618.35	Block Corner
539	1674559.95	1683620.54	Block Corner
540	1674561.84	1683745.53	Block Corner

Point Table			
Point #	Northing	Easting	Description
1328	1674464.71	1683746.84	SM PLUS CUT

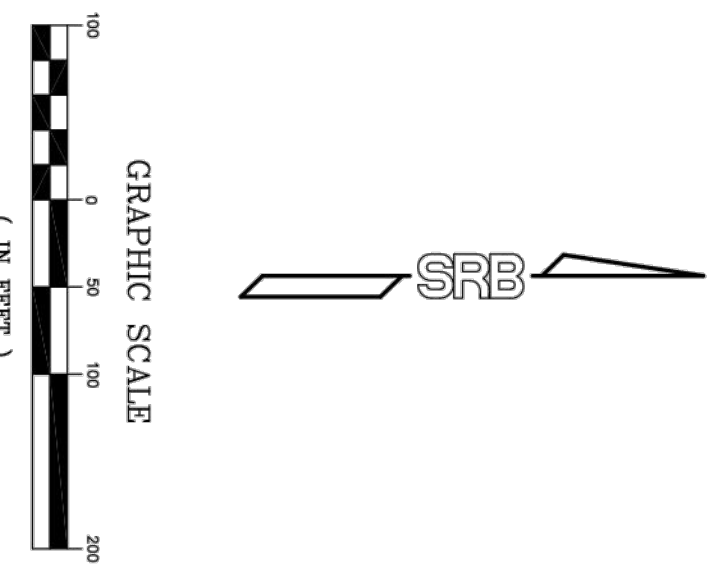
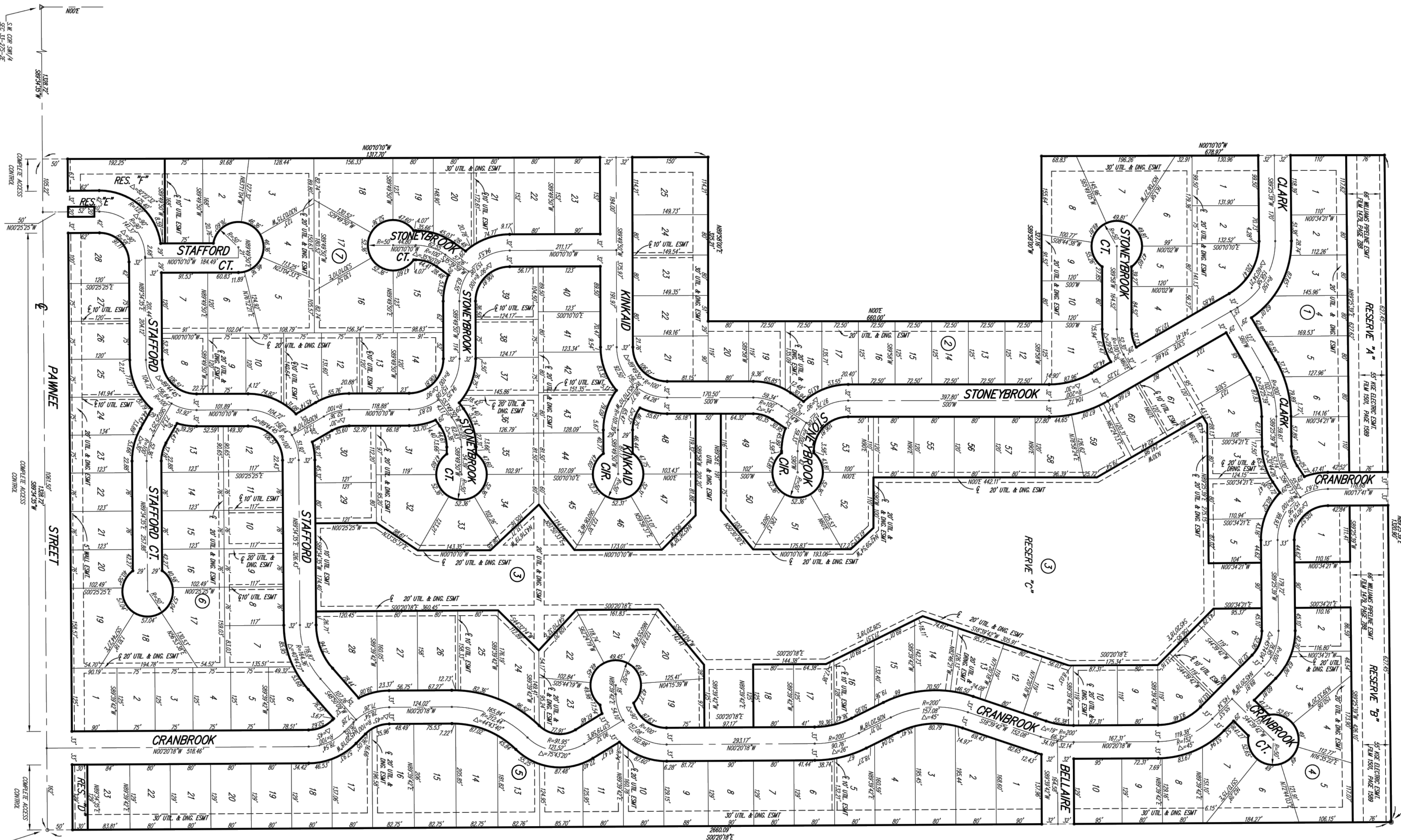
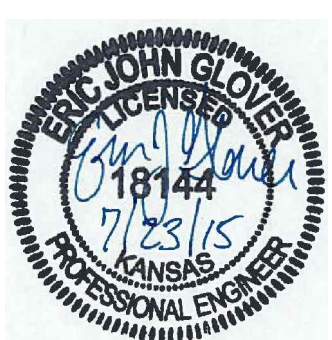


**Brentwood South Addition  
SS-Addition Coordinates**

	<b>RUGGLES &amp; BOHM</b>	DATE
	ENGINEERING   SURVEYING   LANDSCAPE ARCHITECTURE   GOVERNMENT 924 NORTH MAIN WICHITA, KANSAS 67203 P (316) 264-8008 F (316) 264-4621 WWW.RUGGLESANDBOHM.COM	DESIGN EJG DRAWN DS REVIEW 7-1-2015
PROJECT NUMBER <b>448-85029</b>	HB JOB NO. <b>4532E</b>	DWG. SCALE ...
DRAWING FILE <b>4532E Brentwood South Ph 5 - Base (SS-Addition Coordinates)</b>		SHEET <b>17</b> OF <b>18</b>

# BRENTWOOD SOUTH ADDITION

WICHITA, SEDGWICK COUNTY, KANSAS



- △ = CDT OF MICHIA CONTROL TRIMBLE (FOUND)
- = 1/2" REBAR #10/80R CAP (FOUND)
- = 5/8" REBAR (FOUND)
- = 1/2" REBAR #20R CAP (RT)

ANNUAL BUILDING PLAN ELEVATION FOR LOWEST OPENING AND STRUCTURES	LOT NO.	ELEVATION (N.A.M.D.)
	148 1'-20 1/2'	1989
	148 30'-0"	1989
	3	1989

BOUNDARY: LOSS GRASS PLUG 3" S. & 3.5" W.  
 OF CENTERLINE INTERSECTION OF CLARK & PAINWIE  
 ELEV. = 1982.25 MVD  
 BOUNDARY: CDT OF MICHIA CONTROL TRIMBLE  
 20' W. & 54.5' S. OF CENTERLINE INTERSECTION  
 ELEV. = 1979.80

Please contact Western Resources (or its successor)  
 Electric Transmission Engineering Department (currently  
 785-575-8219) before conducting any proposed  
 construction activities that could place people,  
 equipment, or facilities within Western Resources'  
 easement, shown on this plat, designated as Flm 1501,  
 Page 1589, dated December 29, 1994.