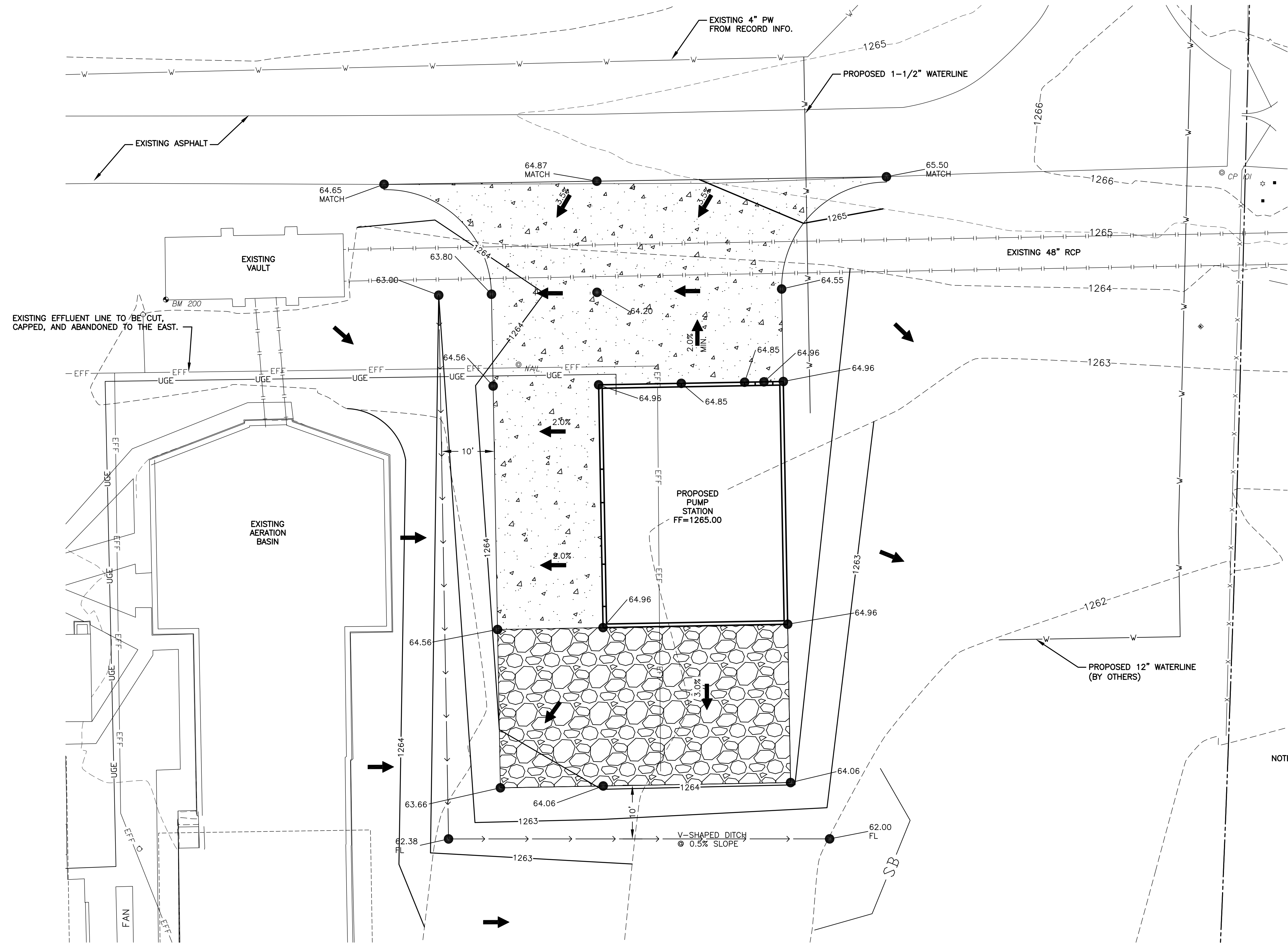


PLOTTED: Thursday, April 21, 2016 @ 04:05PM

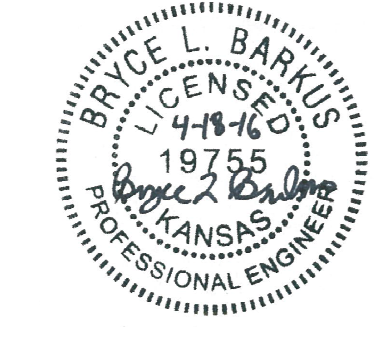
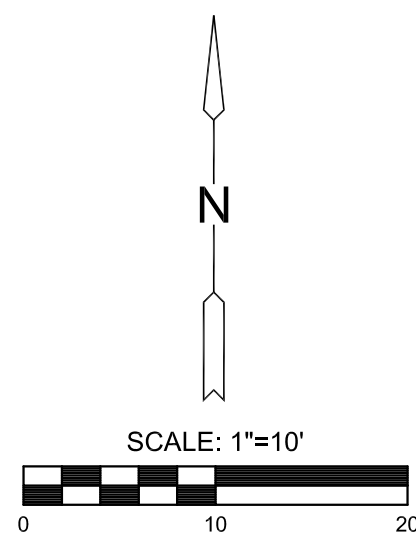
J:\PROJECTS\2015\151010\623_COWI_REUSE_WATER_SUPPLY_SYSTEM_150623_CAD\SHITS\05_CIVIL\GRD\15623_GRADING_PLAN.DWG



LEGEND

- FLOW ARROW
- XXXX EXISTING CONTOUR
- XXXX PROPOSED CONTOUR
- SB SILT BARRIER
- CONCRETE PAVEMENT
- GRAVEL SURFACE

NOTE: ALL SPOT ELEVATIONS ARE TO FINISH GRADE.



CITY OF WICHITA, KANSAS
RE-USE WATER PUMP STATION
 TO SERVE SPIRIT AEROSYSTEMS

©2016 MKEC Engineering All Rights Reserved
 www.mkec.com
 These drawings and their contents, including, but not limited to, all concepts, designs, & ideas are the exclusive property of MKEC Engineering (MKEC), and may not be used or reproduced in any way without the express consent of MKEC.

GRADING PLAN

| | | |
|-------------|-----------|---------|
| PROJECT NO. | 468-85112 | |
| DATE | 04/18/16 | |
| SCALE | 1"=10' | |
| DESIGNED | DRAWN | CHECKED |
| BLB | MCW | MAB |

| | | |
|-----|-------------------------|----------|
| NO. | REVISION | DATE |
| 0 | ISSUED FOR CONSTRUCTION | 04/18/16 |

SHEET NO.
C2.0