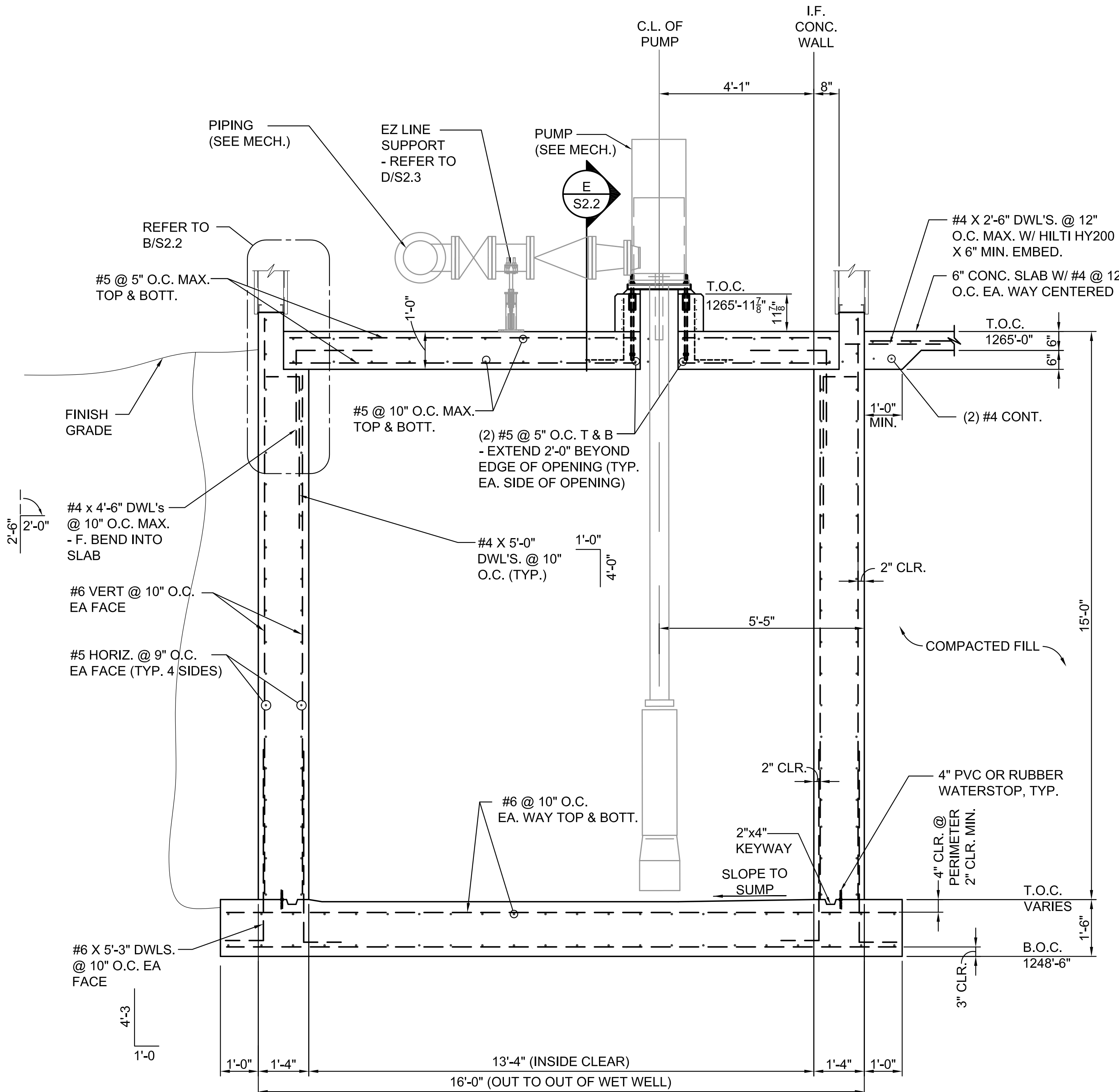


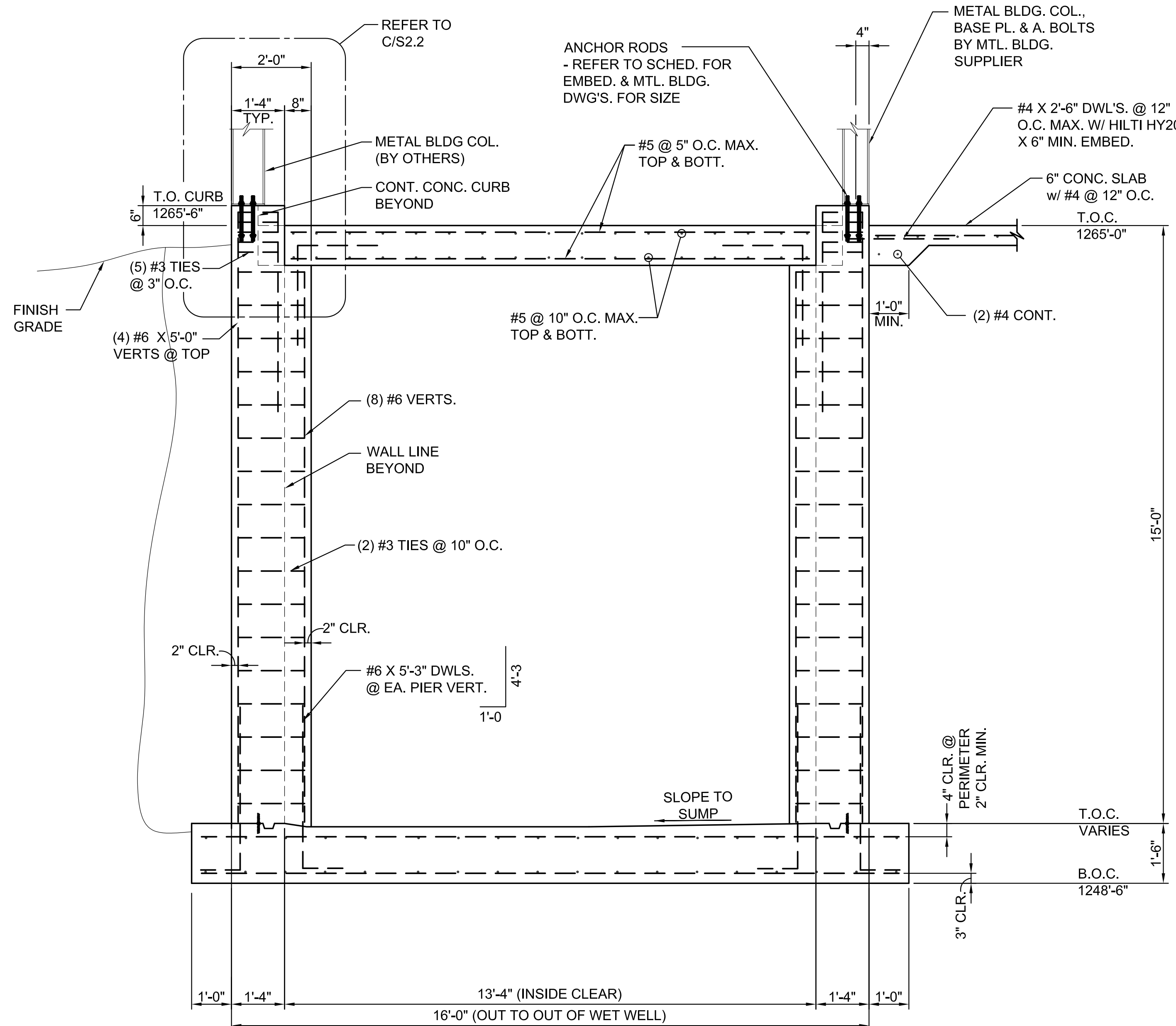
PLOTTED: Friday, April 22, 2016 @ 08:11AM

J:\PROJECTS\2015\1501010623_COWI_REUSE_WATER_SUPPLY_SYSTEM_150623_CAD\SHOTS\06_STRUCT\DWGS\S2.1.DWG

CITY OF WICHITA, KANSAS
RE-USE WATER PUMP STATION
TO SERVE SPIRIT AEROSYSTEMS



A
S2.1
FOUNDATION SECTION
SCALE: 1/2" = 1'-0"



B
S2.1
FOUNDATION SECTION
SCALE: 1/2" = 1'-0"

©2016 MKEC Engineering All Rights Reserved
www.mkec.com
These drawings and their contents, including, but not limited to, all concepts, designs, & ideas are the exclusive property of MKEC Engineering (MKEC), and may not be used or reproduced in any way without the express consent of MKEC.

FOUNDATION SECTIONS		
PROJECT NO.	468-85112	
DATE	04/18/16	
SCALE	AS NOTED	
DESIGNED	DRAWN	CHECKED
SK	CAM	AR
NO.	REVISION	DATE
0	ISSUED FOR CONSTRUCTION	04/18/16
SHEET NO.		
S2.1		

