

4/21/2016 11:57:37 PM

CITY OF WICHITA, KANSAS
RE-USE WATER PUMP STATION
TO SERVE SPIRT AEROSYSTEMS

©2016 MKEC Engineering
All Rights Reserved
www.mkec.com
These drawings and their contents, including, but not limited to, all concepts, designs, & ideas are the exclusive property of MKEC Engineering (MKEC), and may not be used or reproduced in any way without the express consent of MKEC.

FLOOR PLANS

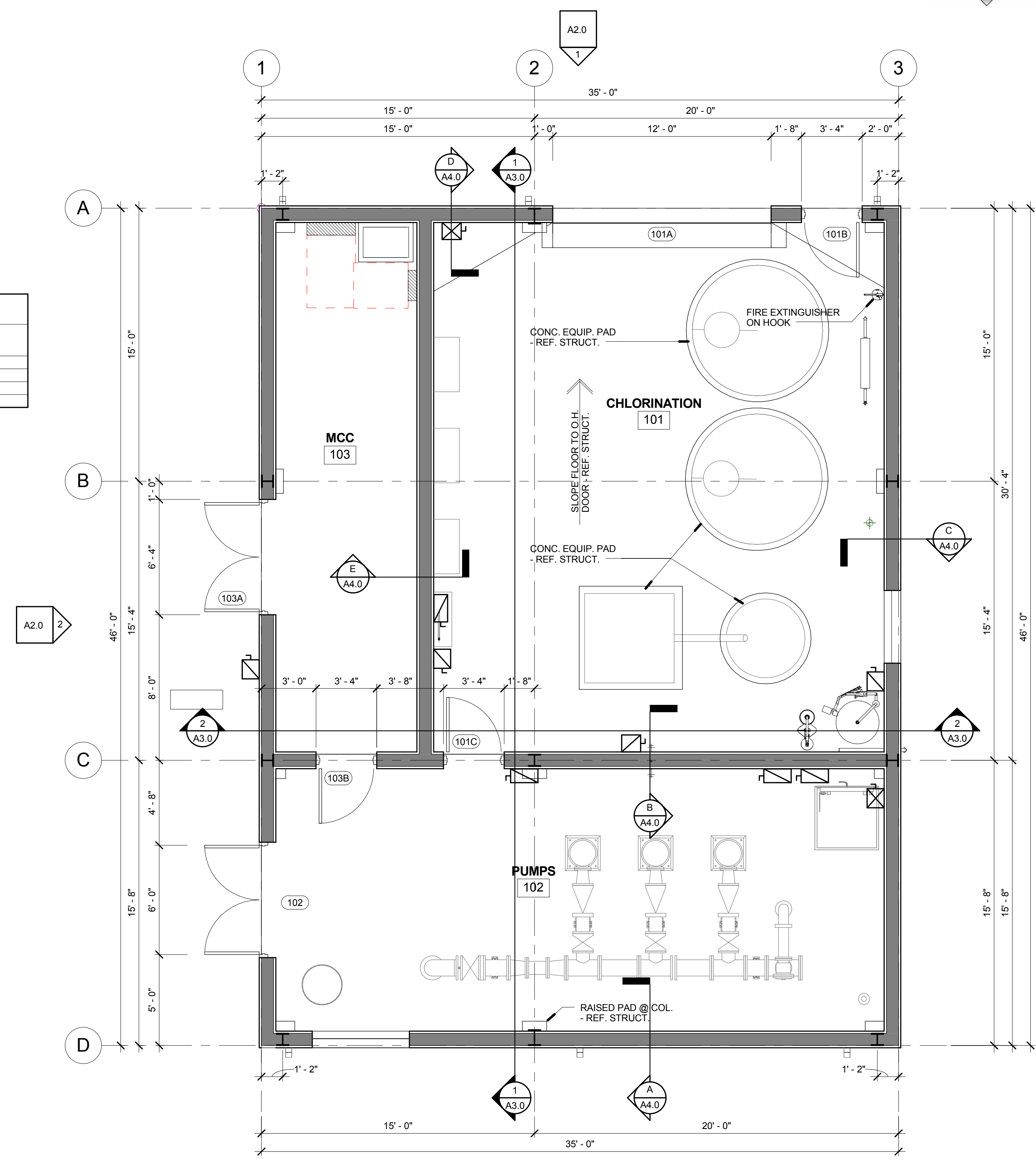
PROJECT NO.	468-85112
DATE	04-18-16
SCALE	AS NOTED
DESIGNED	DGA
DRAWN	TEAM
CHECKED	DGA

0	ISSUED FOR CONSTRUCTION	04/18/16
NO.	REVISION	DATE

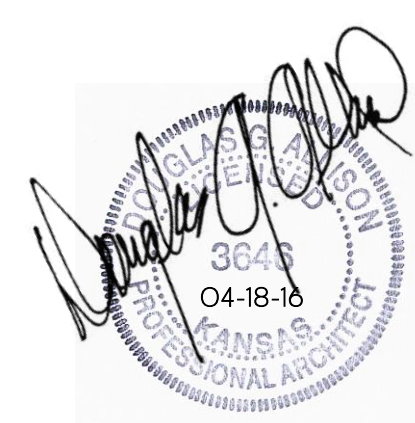
SHEET NO. **A1.0**

Room #	Room Name	Floor	Base	North Wall	South Wall	East Wall	West Wall	Ceiling Finish	Comments
101	CHLORINATION	SEALED CONC.	SEALED CONC.	LINER PANEL	LINER PANEL	LINER PANEL	LINER PANEL	LINER PANEL	
102	PUMPS	SEALED CONC.	SEALED CONC.	LINER PANEL	LINER PANEL	LINER PANEL	LINER PANEL	LINER PANEL	
103	MCC	SEALED CONC.	SEALED CONC.	LINER PANEL	LINER PANEL	LINER PANEL	LINER PANEL	LINER PANEL	

CONCRETE SEALER SHALL BE SOLVENT BASED ACRYLIC (MPI #104) PER SPECIFICATIONS



A ARCHITECTURAL FLOOR PLAN
1/4" = 1'-0"
0 2 4 8
NORTH



C:\2015-204 COW Pump Station\Architecture\COW WATER PUMP.rvt