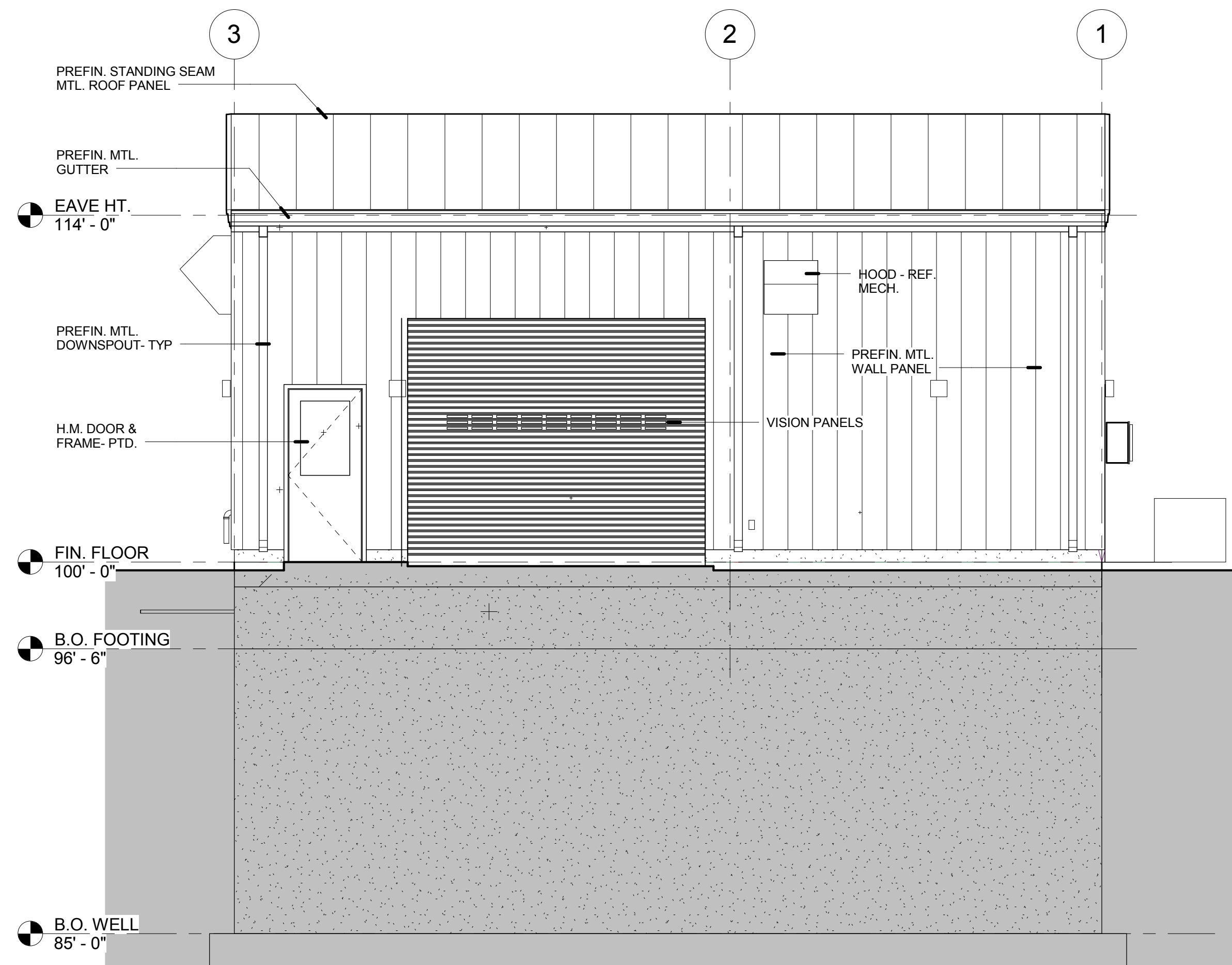
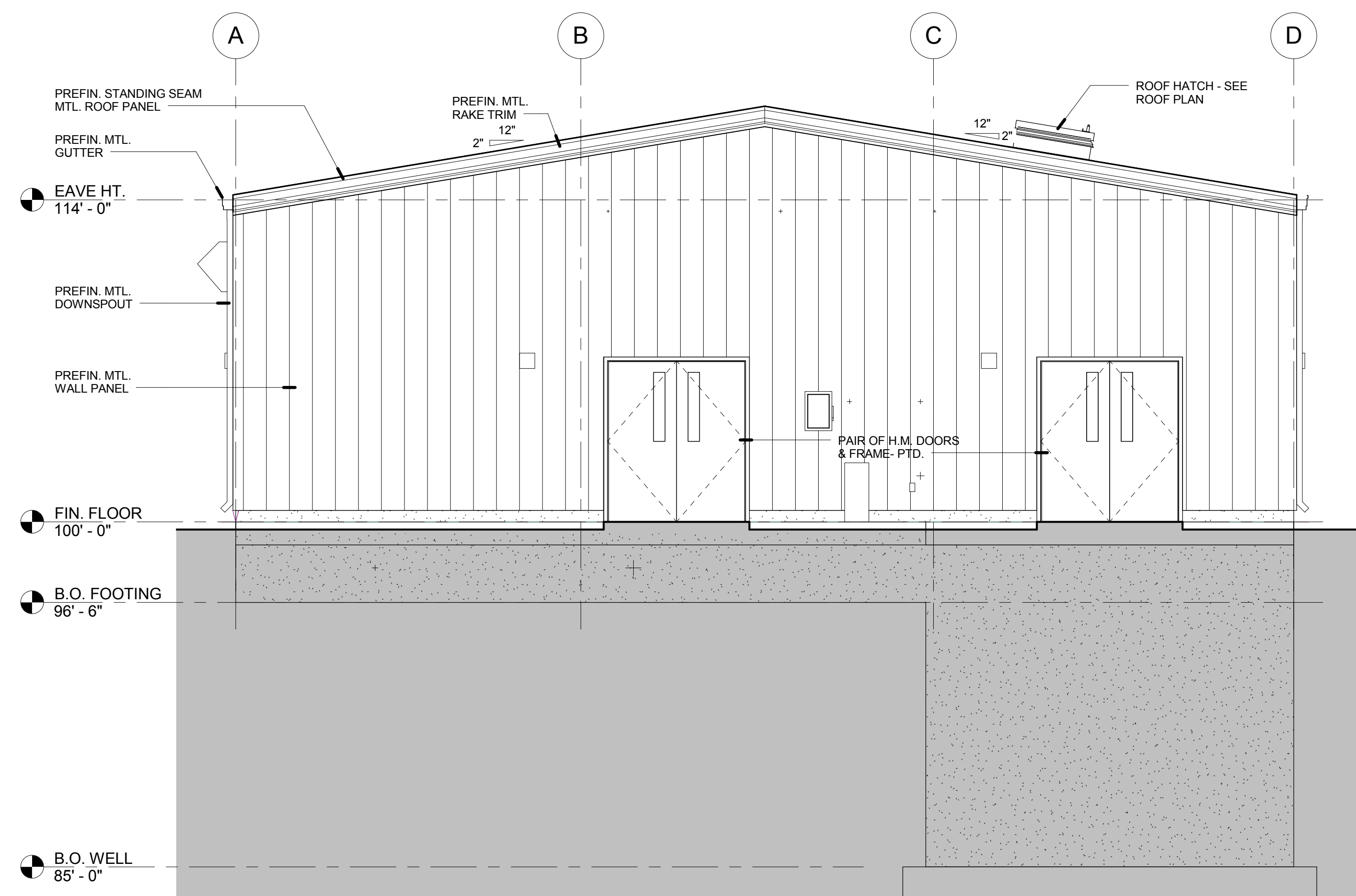


4/21/2016 11:57:38 PM

CITY OF WICHITA, KANSAS
RE-USE WATER PUMP STATION
TO SERVE SPIRT AEROSYSTEMS



1 NORTH ELEVATION
1/4" = 1'-0"



2 EAST ELEVATION
1/4" = 1'-0"

[Handwritten Signature]
3641
04-18-16
KANSAS PROFESSIONAL ARCHITECT

©2016 MKEC Engineering
All Rights Reserved
www.mkec.com
These drawings and their contents, including, but not limited to, all concepts, designs, & ideas are the exclusive property of MKEC Engineering (MKEC), and may not be used or reproduced in any way without the express consent of MKEC.

EXTERIOR ELEVATIONS

PROJECT NO.	468-85112
DATE	04-18-16
SCALE	AS NOTED
DESIGNED	DGA
DRAWN	TEAM
CHECKED	DGA

0	ISSUED FOR CONSTRUCTION	04/18/16
NO.	REVISION	DATE

SHEET NO.

C:\2015-204 COW Pump Station\Architecture\COW WATER PUMP.rvt