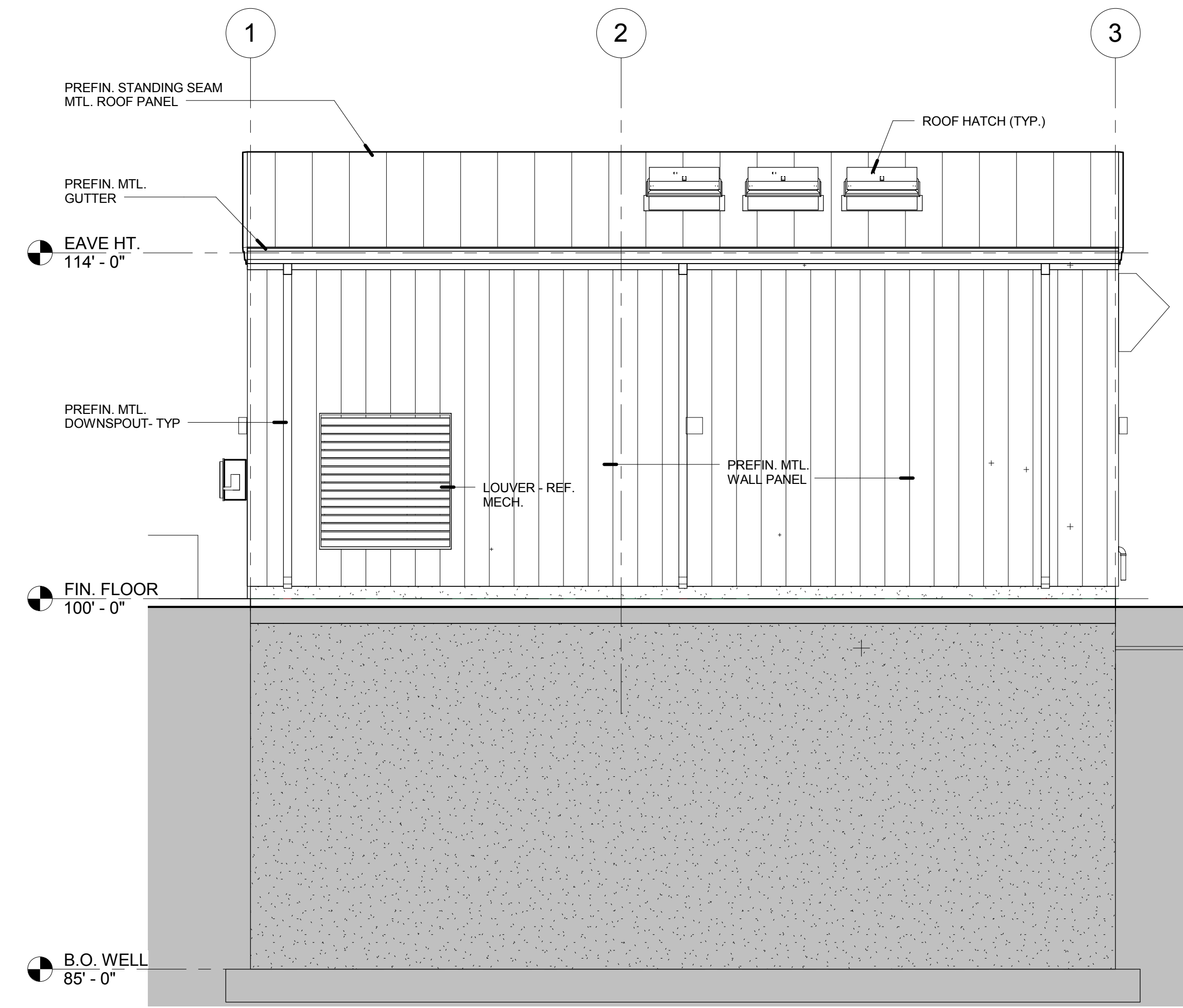
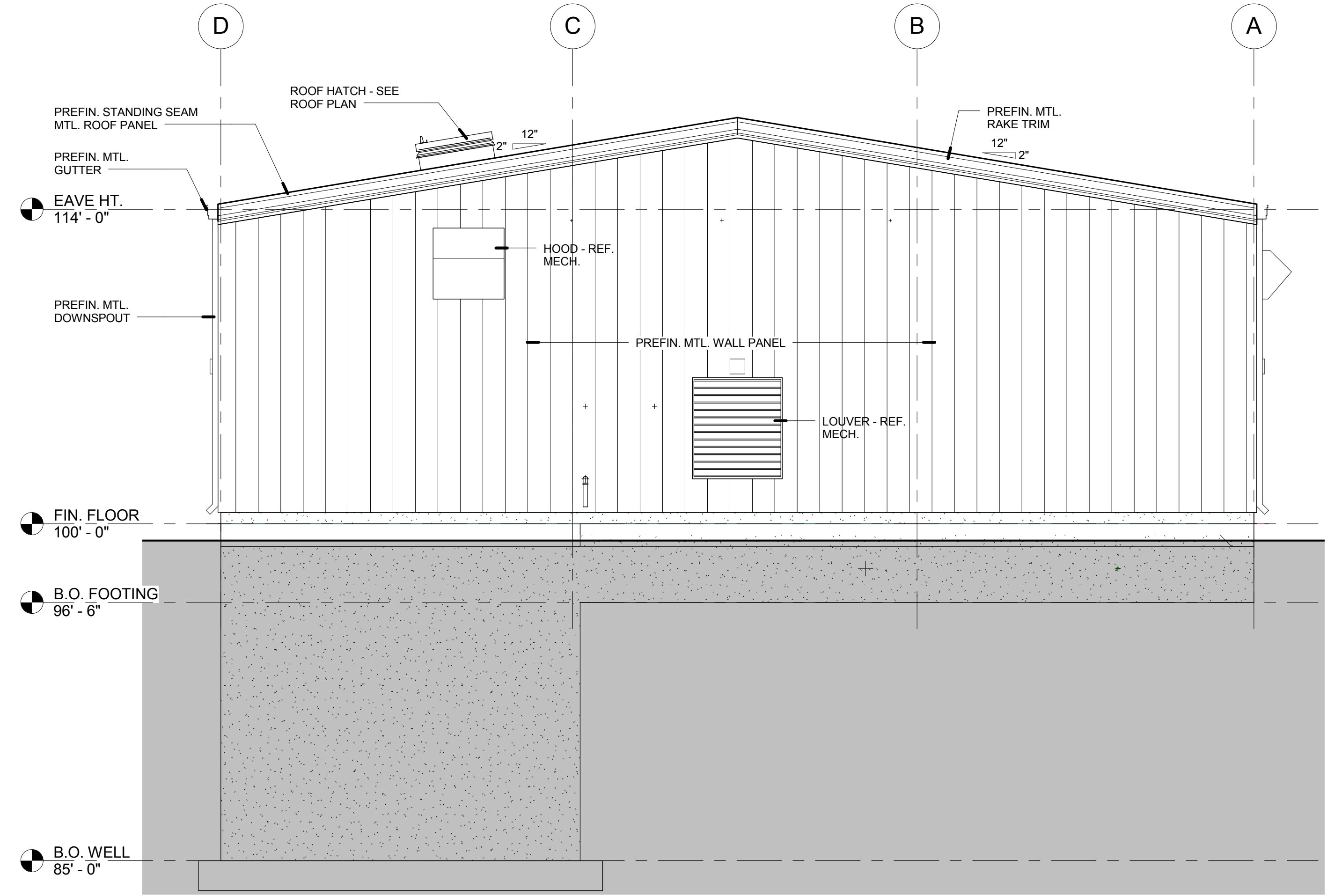


4/21/2016 11:57:38 PM

CITY OF WICHITA, KANSAS
RE-USE WATER PUMP STATION
TO SERVE SPIRT AEROSYSTEMS



1 SOUTH ELEVATION
1/4" = 1'-0"

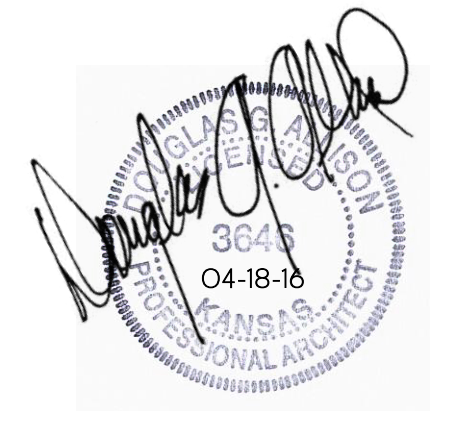


2 WEST ELEVATION
1/4" = 1'-0"

©2016 MKEC Engineering All Rights Reserved www.mkec.com
These drawings and their contents, including, but not limited to, all concepts, designs, & ideas are the exclusive property of MKEC Engineering (MKEC), and may not be used or reproduced in any way without the express consent of MKEC.

EXTERIOR ELEVATIONS

PROJECT NO.	468-85112
DATE	04-18-16
SCALE	AS NOTED
DESIGNED	DGA
DRAWN	TEAM
CHECKED	DGA



0	ISSUED FOR CONSTRUCTION	04/18/16
NO.	REVISION	DATE

SHEET NO. A2.1

C:\2015\044 COW Pump Station\Architecture\COW WATER PUMP.rvt