

4/21/2016 5:30:01 PM

C:\Users\jbrbw\Documents\15623 - COW WATER PUMP - MEP - jbrbw.rvt



Wichita, KS • 316-684-9600

CITY OF WICHITA, KANSAS  
**RE-USE WATER PUMP STATION**  
 TO SERVE SPIRT AEROSYSTEMS

©2016 MKEC Engineering  
 All Rights Reserved  
 www.mkec.com  
 These drawings and their contents, including, but not limited to, all concepts, designs, & ideas are the exclusive property of MKEC Engineering (MKEC), and may not be used or reproduced in any way without the express consent of MKEC.

**CONTROL CONDUIT PLAN**

PROJECT NO.	468-85112
DATE	04/18/16
SCALE	AS NOTED
DESIGNED	JRBW
DRAWN	JA
CHECKED	JRBW

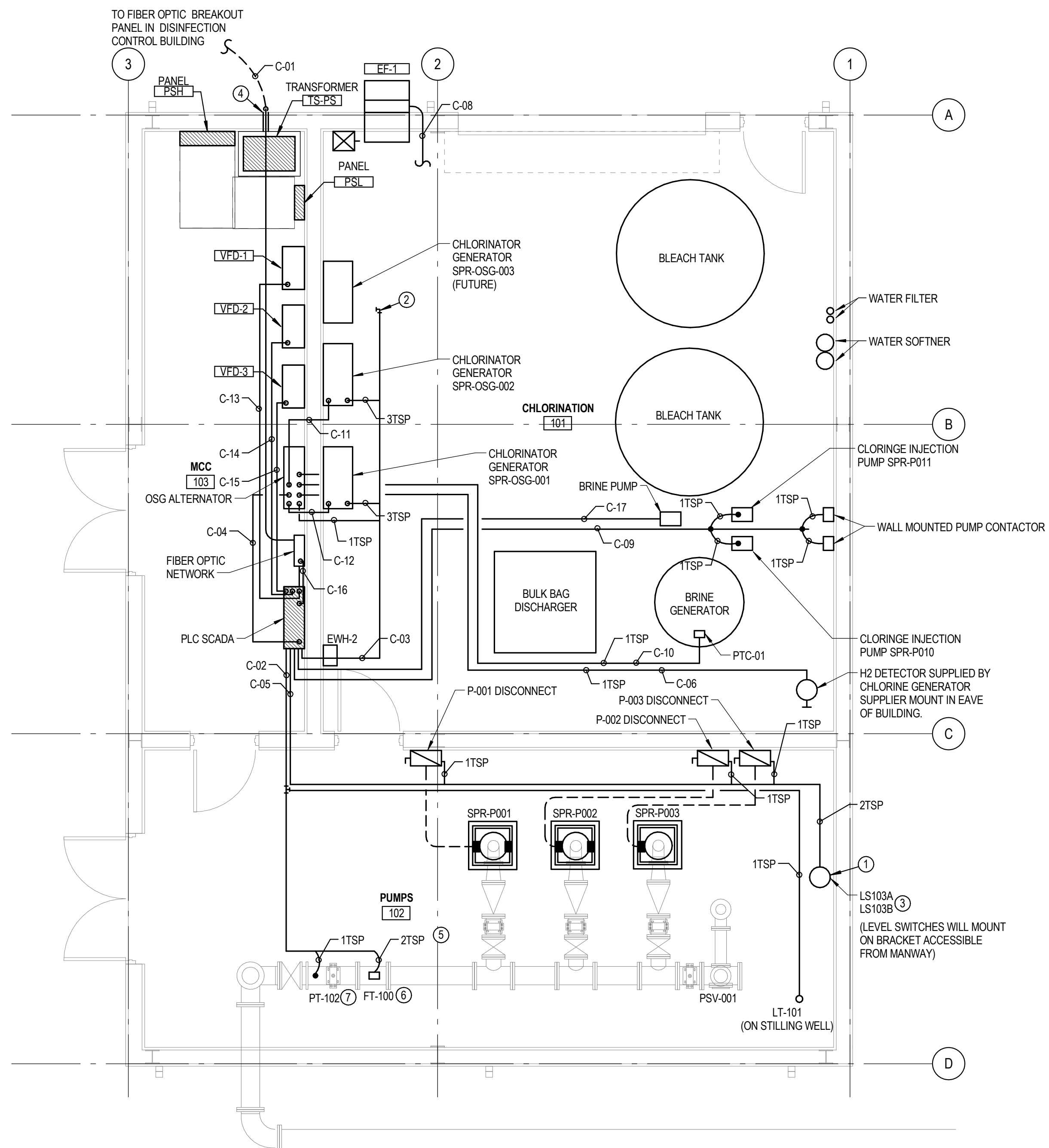
NO.	REVISION	DATE
0	ISSUED FOR CONSTRUCTION	04/18/16
SHEET NO.		
E2.1		

**CABLE & CONDUIT SCHEDULE**

CONDUIT RUN	FROM	TO	DESCRIPTION	WIRE SIZE / TYPE
C-01	FIBER OPTIC NETWORK	FIBER OPTIC BREAKOUT PANEL	PT-102 4-20, FT-100 4-20, FT-100 PWR 24VDC, LT-101 4-20, LT-101A PULSE	2" GRC/PVC 12 STRAND FIBER OPTIC CABLE
C-02	PLC SCADA			1" GRC 5 #18TSP
C-03	PLC SCADA		CHLORINATION SYSTEM	1.5" GRC 7 #18TSP
C-04	PLC SCADA		CHLORINATION SYSTEM	0.75" GRC 1 #18 ETHERNET
C-05	PLC SCADA		DISCONNECTS SPR-P001, SPR-P002, AND SPR-P003, HIGH LEVEL ALARM LS-103A, LOW LEVEL PUMPS LS-103B	1" GRC 4 #18TSP
C-06	OSG ALTERNATOR		H2 DETECTOR TO CL CONTROL CABINET	0.75" GRC 1 #18TSP
C-07	PLC SCADA		WATER HEATER	0.75" GRC 2 #18TSP
C-08	PLC/MCC		MAKEUP AIR FAN	0.75" GRC 6 #14THHN
C-09	PLC SCADA		CHLORENE INJECTION PUMP SPR-P010 AND SPR-P011	0.75" GRC 4 #18TSP
C-10	PTC-01 BRINE TANK		OSG-PLC	0.75" GRC 1 #18TSP
C-11	OSG ALTERNATOR		SPR-OSG-001	1.5" GRC 10 #18TSP
C-12	OSG ALTERNATOR		SPR-OSG-002	1.5" GRC 10 #18TSP
C-13	PLC SCADA		VFD-1	1.25" GRC 6 #18TSP
C-14	PLC SCADA		VFD-2	1.25" GRC 6 #18TSP
C-15	PLC SCADA		VFD-3	1.25" GRC 6 #18TSP
C-16	FIBER OPTIC BREAKOUT PANEL		SCADA PLC	1.5" EMT - 4 FIBER OPTIC PATCH CABLES 2M - MM 62.5
C-17	BRINE PUMP		SCADA PLC	0.75" - 2 #18TSP

**KEYED NOTES E2.1**

- LS103A AND LS103B LEVEL SWITCHES WILL BE INSTALLED NEXT TO MANWAY.
- INSTALL 1 1/2" FITTING AND PLUG FOR FUTURE.
- HIGH AND LOW LEVEL SWITCH SEE DETAIL 4/E4.1
- SEE DETAIL 3/E4.1 FOR DUCT BANK WALL PENETRATION.
- SEE DETAIL 8/E4.1 FOR LEVEL TRANSMITTER.
- SEE DETAIL 7/E4.1 FOR FLOW TRANSMITTER.
- SEE DETAIL 6/E4.1 FOR PRESSURE TRANSMITTER.



**A CONTROL CONDUIT PLAN**

1/4" = 1'-0" 0' 1' 2' 4' 8'

