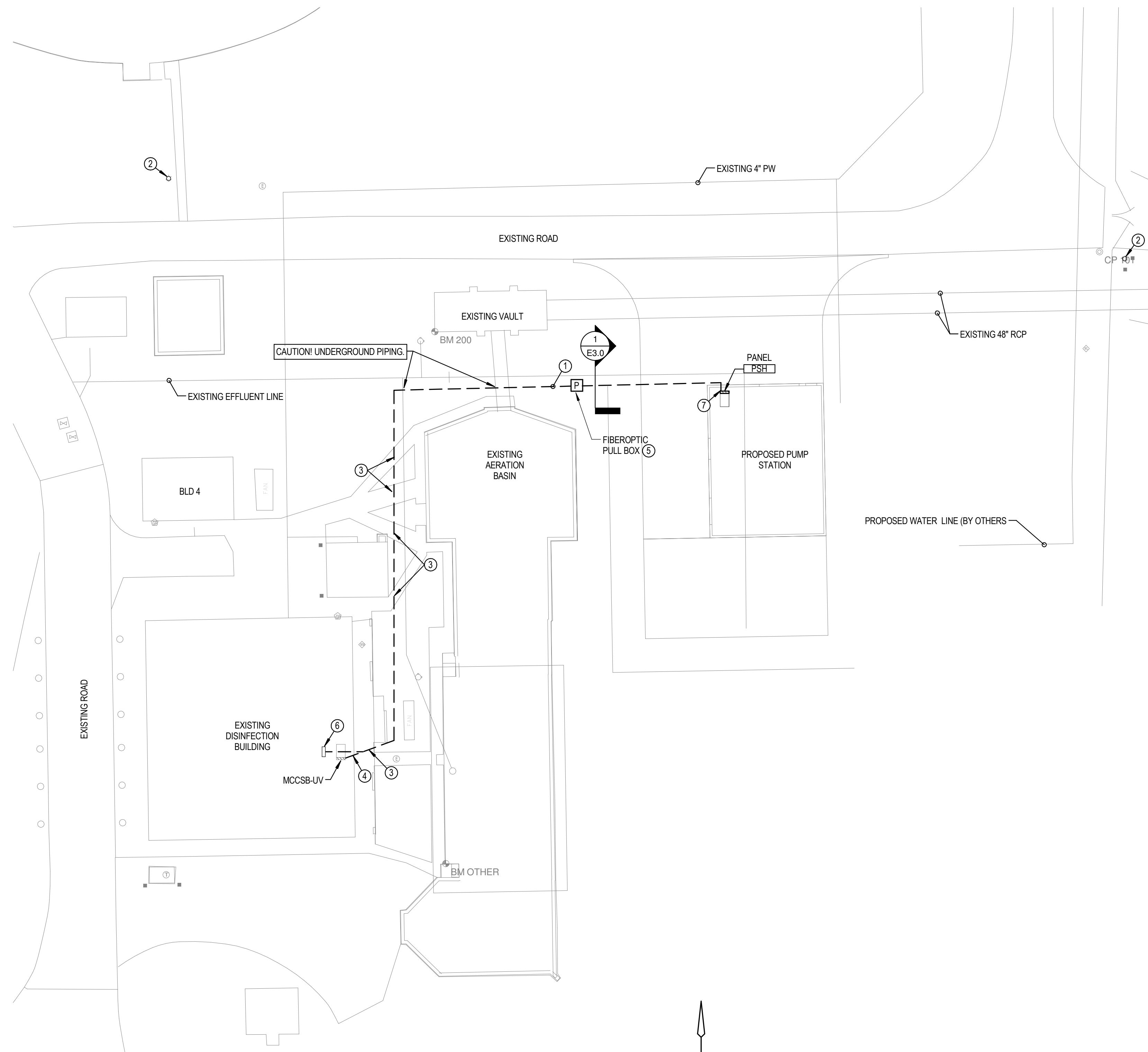


4/21/2016 5:30:02 PM

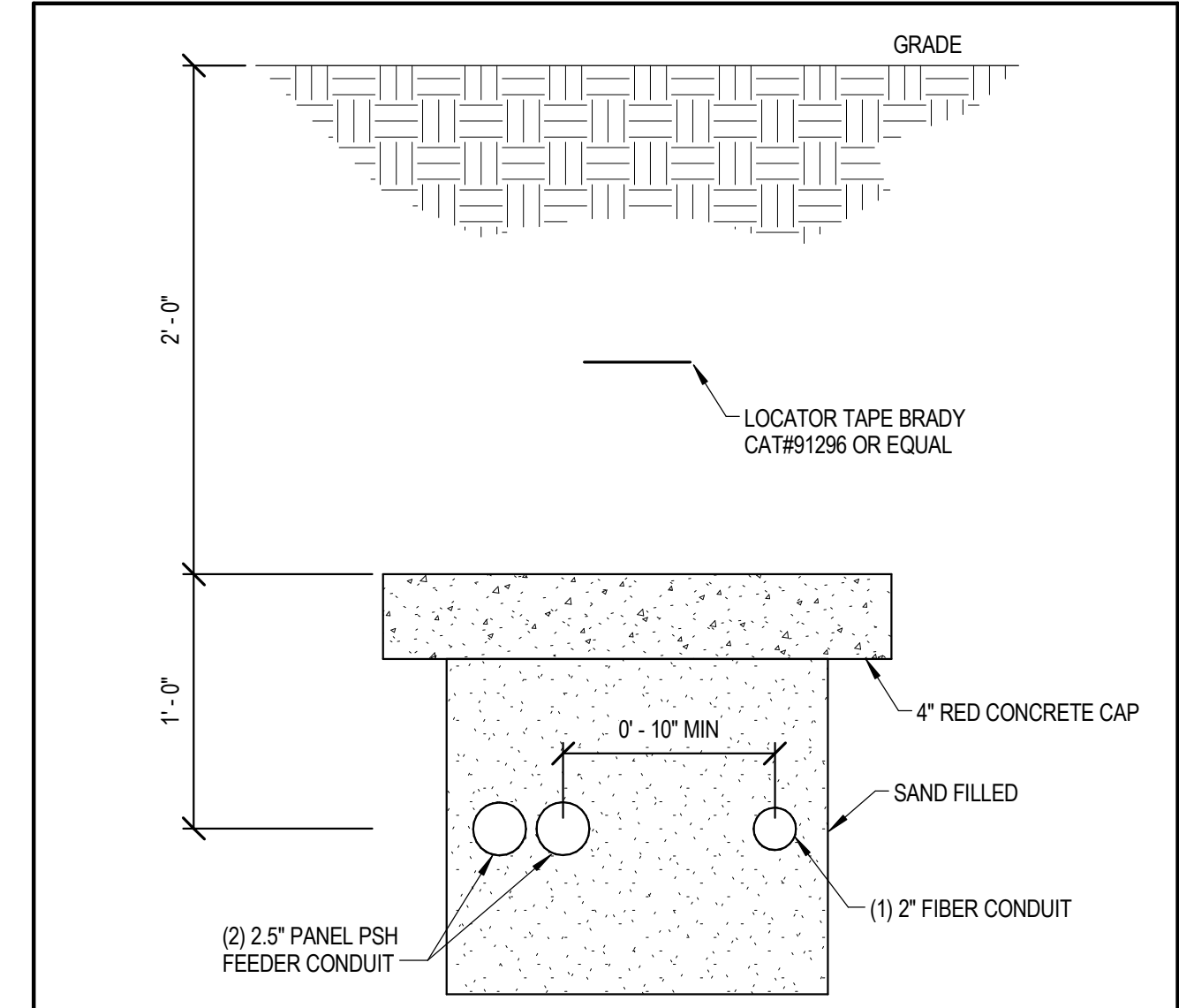
C:\Users\jranza\Documents\15623 - COW WATER PUMP - MEP - jranza.rvt



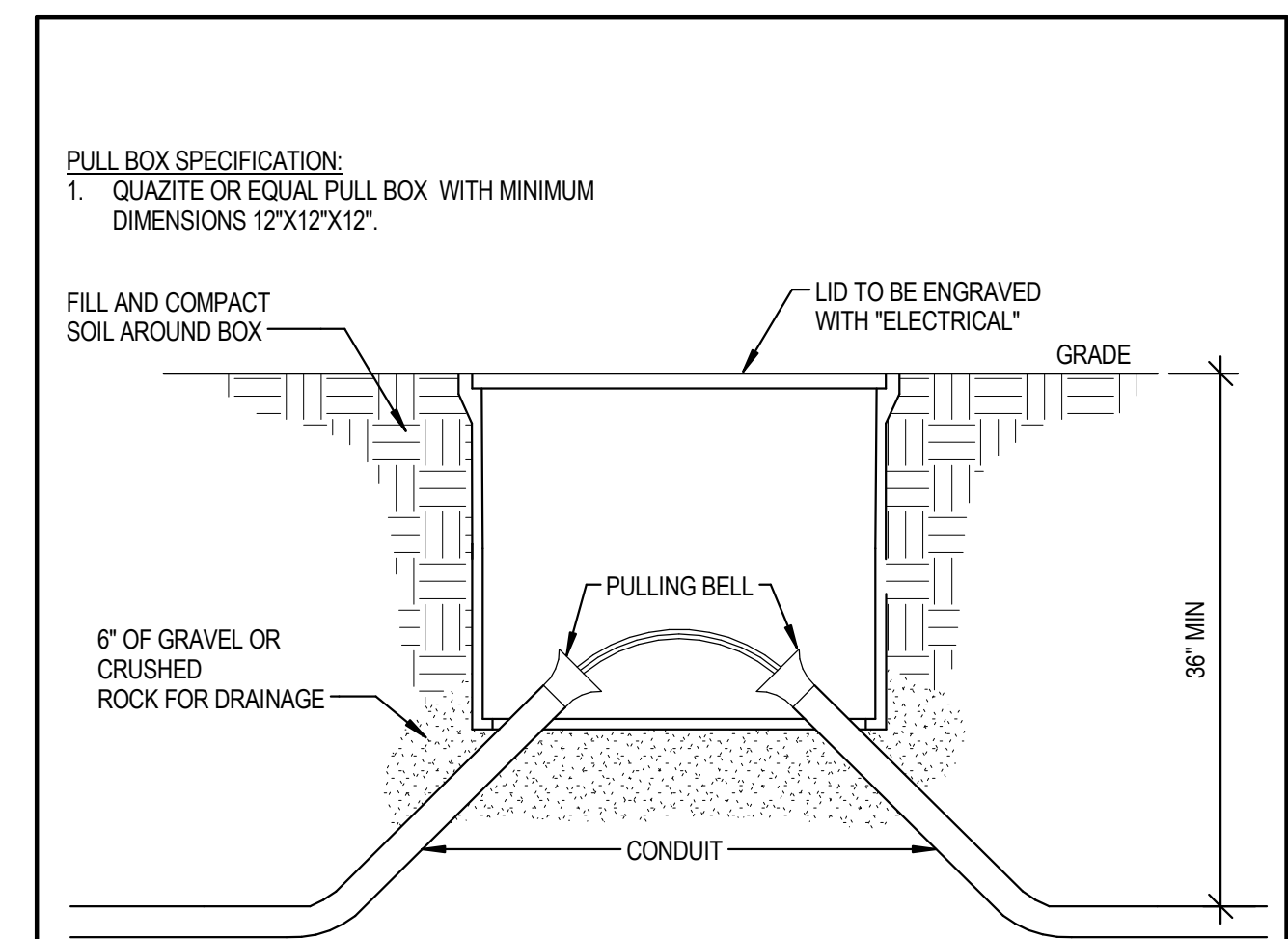
**A ELECTRICAL SITE PLAN**  
 1" = 20'-0"  
 0' 5' 10' 20' 40'



KEYED NOTES E3.0	
1.	SEE ONE-LINE DIAGRAM FOR DISTRIBUTION PANEL PSH FEEDER. SEE CONTROLS DRAWINGS FOR FIBER OPTIC LINE IN SAME TRENCH. SEE DETAIL 1 THIS SHEET FOR DUCT BANK CONSTRUCTION.
2.	EXISTING SITE AREA LIGHT. SHOWN FOR REFERENCE ONLY.
3.	SEE CIVIL PLANS FOR SIDEWALK REMOVAL AND REPLACEMENT.
4.	ROUTE POWER CONDUIT OUT OF BUILDING BELOW ROOF EAVE. SURFACE MOUNT TO BUILDING WALL TO BELOW GRADE.
5.	SEE DETAIL 2 THIS SHEET FOR PULL BOX DETAIL.
6.	FIBER OPTIC CABLE WILL BE INSTALLED AND CONNECTED TO EXISTING FIBER OPTIC NETWORK.
7.	FIBER OPTIC CABLE WILL BE INSTALLED IN PUMP STATION MCC AND CONNECTED TO FIBER OPTIC NETWORK PANEL INSTALLED ADJACENT TO SCADA/PLC CABINET.



**1 DUCT BANK DETAIL**  
 NO SCALE



**PULL BOX SPECIFICATION:**  
 1. QUAZITE OR EQUAL PULL BOX WITH MINIMUM DIMENSIONS 12\"/>

**NOTE:**  
 PROVIDE PULL BOXES ON SITE WHERE REQUIRED BY NEC. DRAWINGS DO NOT INDICATE ALL REQUIRED PULL BOXES.

**2 PULL BOX DETAIL**  
 NO SCALE



CITY OF WICHITA, KANSAS  
**RE-USE WATER PUMP STATION**  
 TO SERVE SPIRT AEROSYSTEMS

©2016 MKEC Engineering All Rights Reserved www.mkec.com  
 These drawings and their contents, including, but not limited to, all concepts, designs, & ideas are the exclusive property of MKEC Engineering (MKEC), and may not be used or reproduced in any way without the express consent of MKEC.

**ELECTRICAL SITE PLAN**

PROJECT NO.	468-85112	
DATE	04/18/16	
SCALE	AS NOTED	
DESIGNED	DRAWN	CHECKED
JRBW	JA	JRBW

NO.	REVISION	DATE
0	ISSUED FOR CONSTRUCTION	04/18/16
SHEET NO. E3.0		

