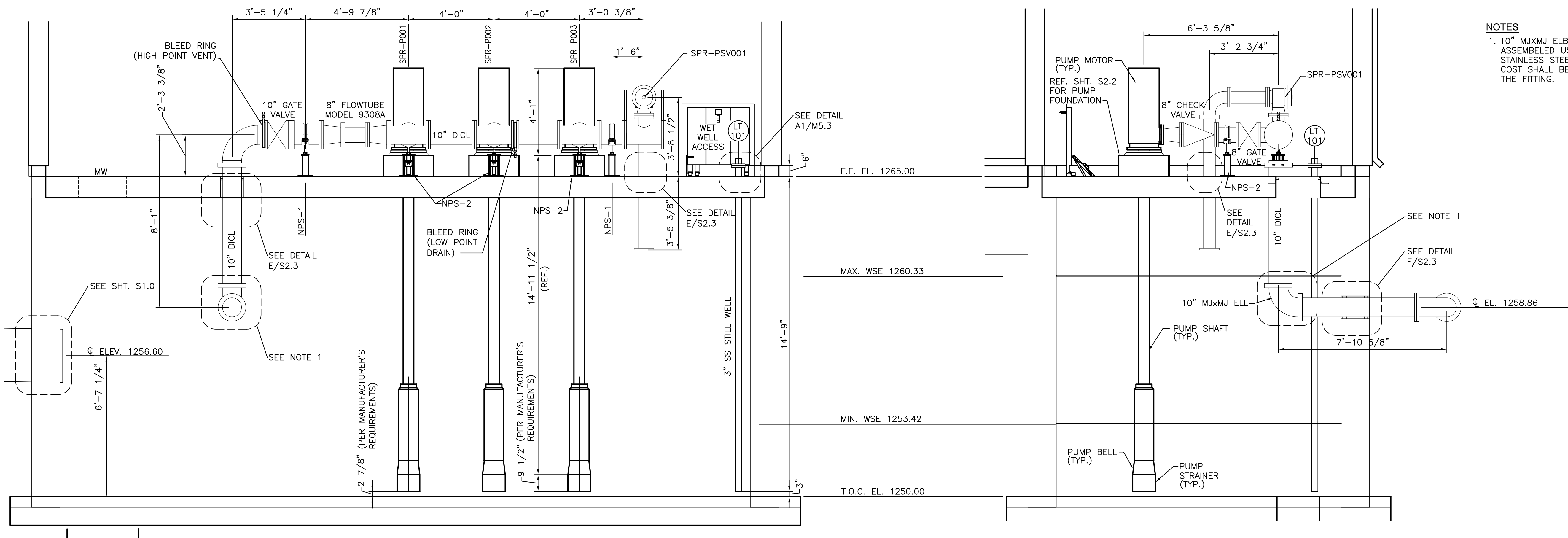


PLOTTED: Friday, April 22, 2016 @ 11:23AM

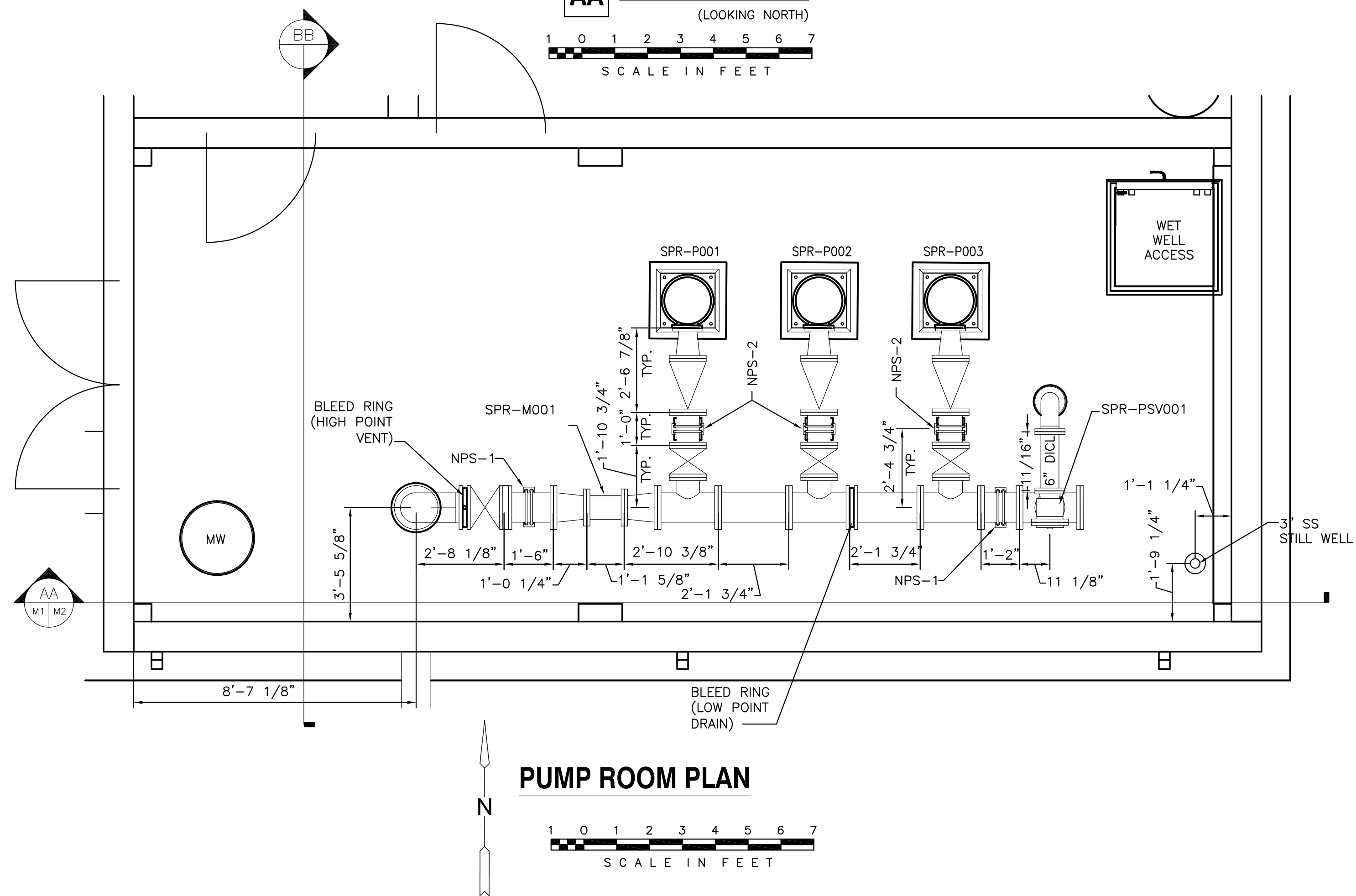
J:\PROJECTS\2015\1501010823_COWI_REUSE_WATER_SUPPLY_SYSTEM\15_ISSUED\DWG\20160418\JFC_PLANS\MECHANICAL\NOT SEALED\M5.1_PUMP_ROOM_DETAILS.DWG



NOTES
 1. 10" MJX MJ ELBOW SHALL BE ASSEMBLED USING ALL STAINLESS STEEL HARDWARE. COST SHALL BE SUBSIDIARY TO THE FITTING.

AA ELEVATION A-A
 (LOOKING NORTH)
 SCALE IN FEET

BB ELEVATION B-B
 (LOOKING EAST)
 SCALE IN FEET



PUMP ROOM PLAN
 SCALE IN FEET

PIPE SUPPORT SCHEDULE ("E-Z" LINE) (713) 675-6693

NPS#	QUANTITY	PIPE SIZE	MODEL #	FIGURE #	"A"
NPS-1	2	10"	510	F	1'-4"
NPS-2	3	8"	510	F	1'-5"

NOTES:



CITY OF WICHITA, KANSAS
RE-USE WATER PUMP STATION
 TO SERVE SPIRIT AEROSYSTEMS

©2016 MKEC Engineering All Rights Reserved
 www.mkec.com
 These drawings and their contents, including, but not limited to, all concepts, designs, & ideas are the exclusive property of MKEC Engineering (MKEC), and may not be used or reproduced in any way without the express consent of MKEC.

PUMP ROOM DETAILS

PROJECT NO.	468-85112	
DATE	04/18/16	
SCALE	AS NOTED	
DESIGNED	DRAWN	CHECKED
BWT	ALF	KTS
ISSUED FOR CONSTRUCTION	04/18/16	
NO.	REVISION	DATE
SHEET NO.	M5.1	

