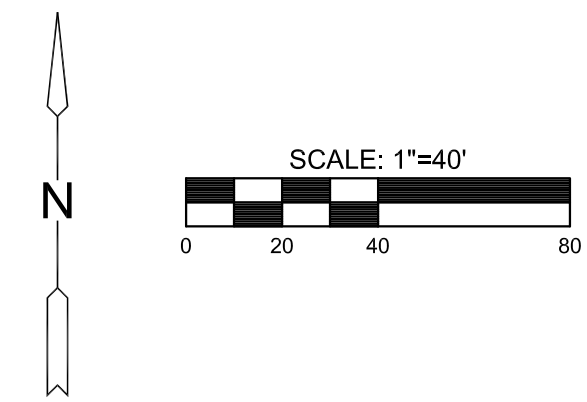
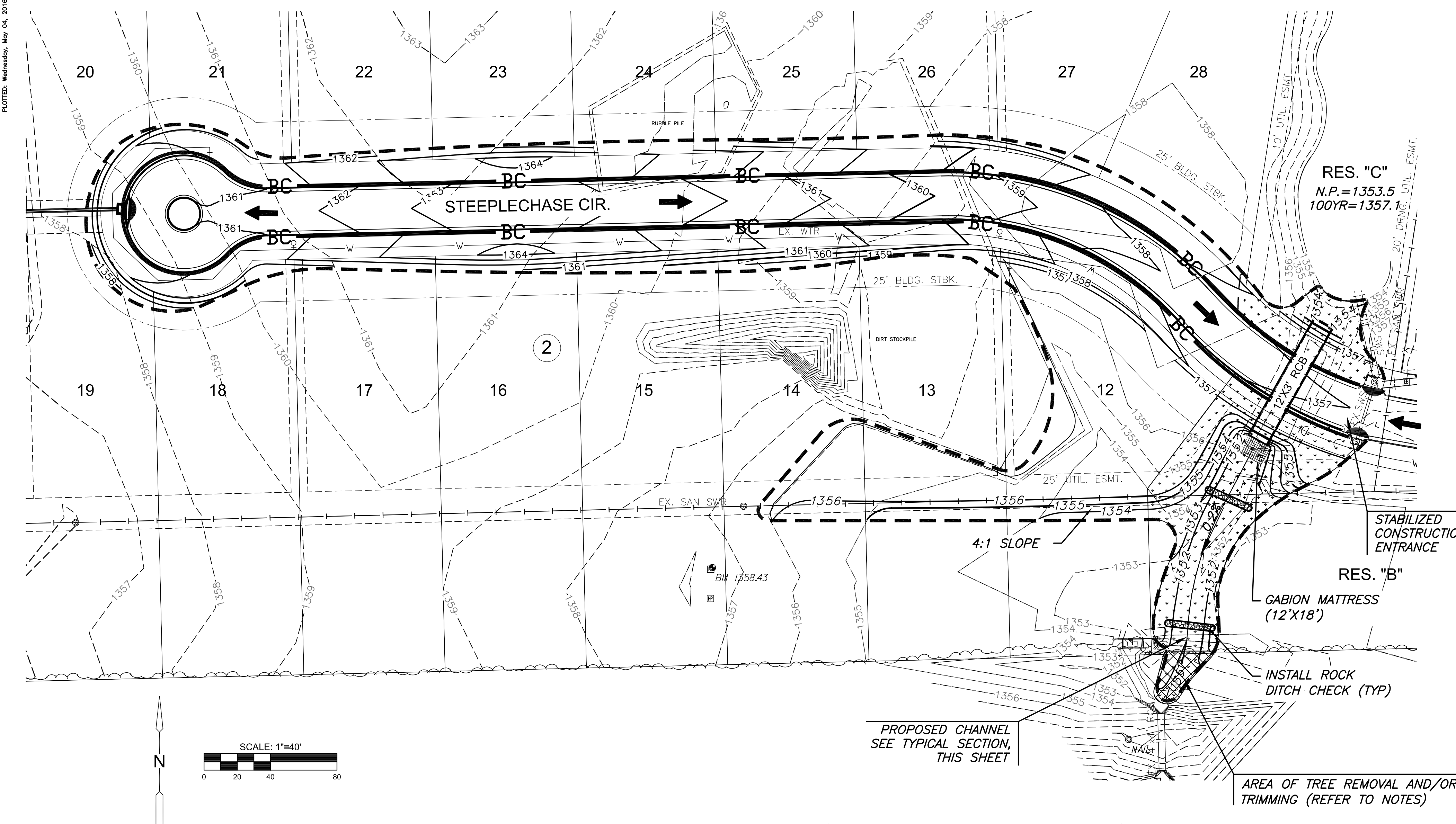
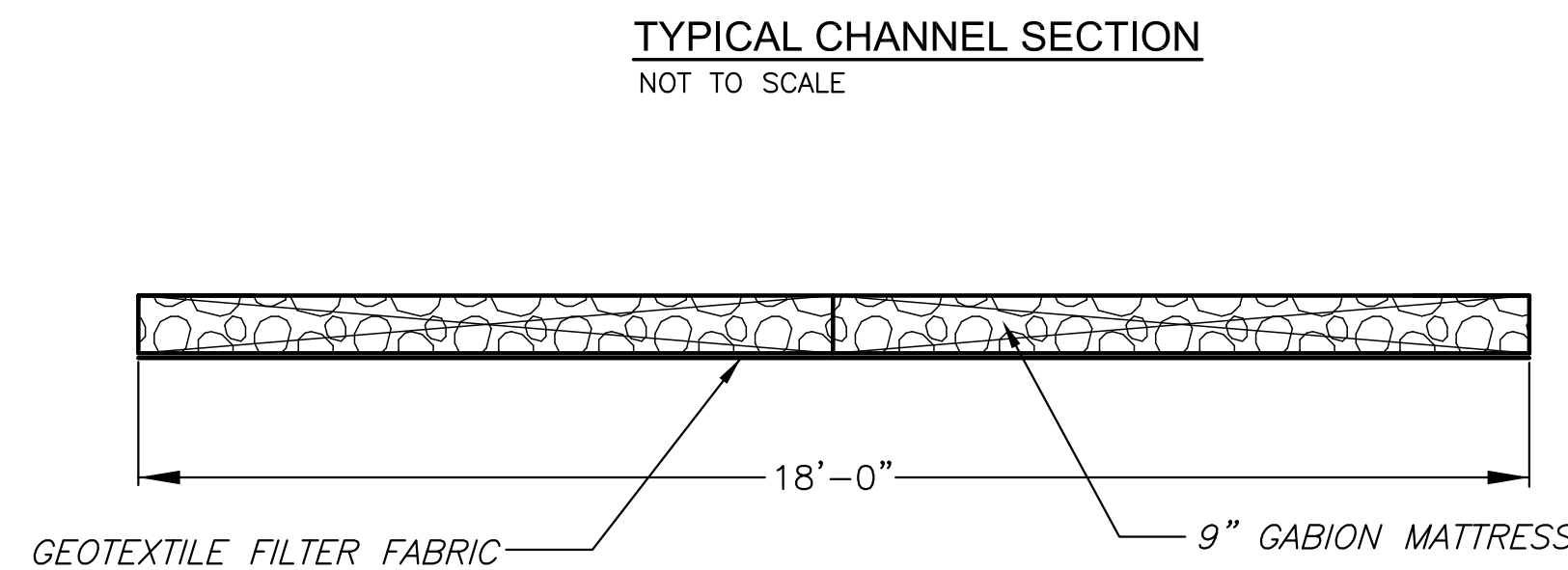
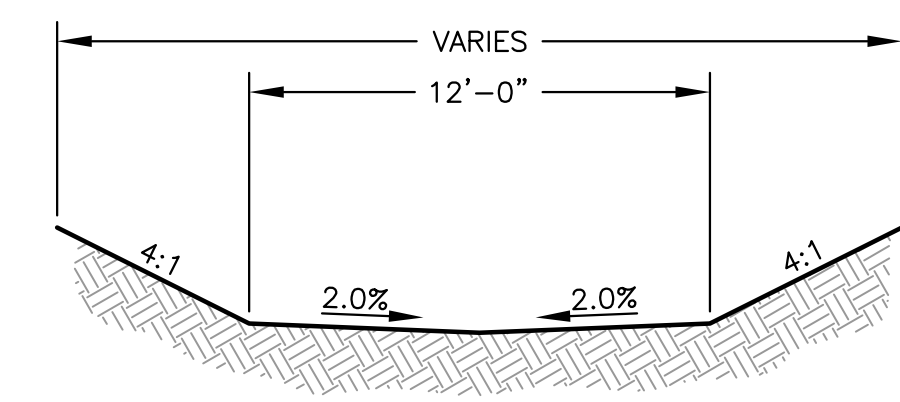


PUNTED: Wednesday, May 04, 2016 @ 10:56AM



LEGEND

- 1370--- EXIST. CONTOUR
- 1370— PROP. CONTOUR
- W — WATERLINE
- S — SANITARY SEWER
- SWS — STORMWATER SEWER
- UGE — UNDERGROUND ELECTRICAL
- G — GAS LINE
- UGT — UNDERGROUND TELEPHONE
- FLOW ARROW
- CURB INLET PROTECTION (3)
- BC — BACK OF CURB PROTECTION (1,615 LF)
- - - - - TEMPORARY SEEDING (1.2 AC.)
(QUANTITY DOES NOT INCLUDE PERMANENT SEED AREA)
- ▾ ▾ PERMANENT SEEDING (0.3 AC.)
- ROCK DITCH CHECK (2)
- ▨ GABION MATTRESS (12'X18')



1. GEOTEXTILE FILTER FABRIC SHALL BE TREVIRA SPUNBOND #1120 OR APPROVED EQUAL.
2. GABIONS AND MATTRESSES SHALL BE PVC COATED.

GABION MATTRESS DETAIL
SCALE: N.T.S.

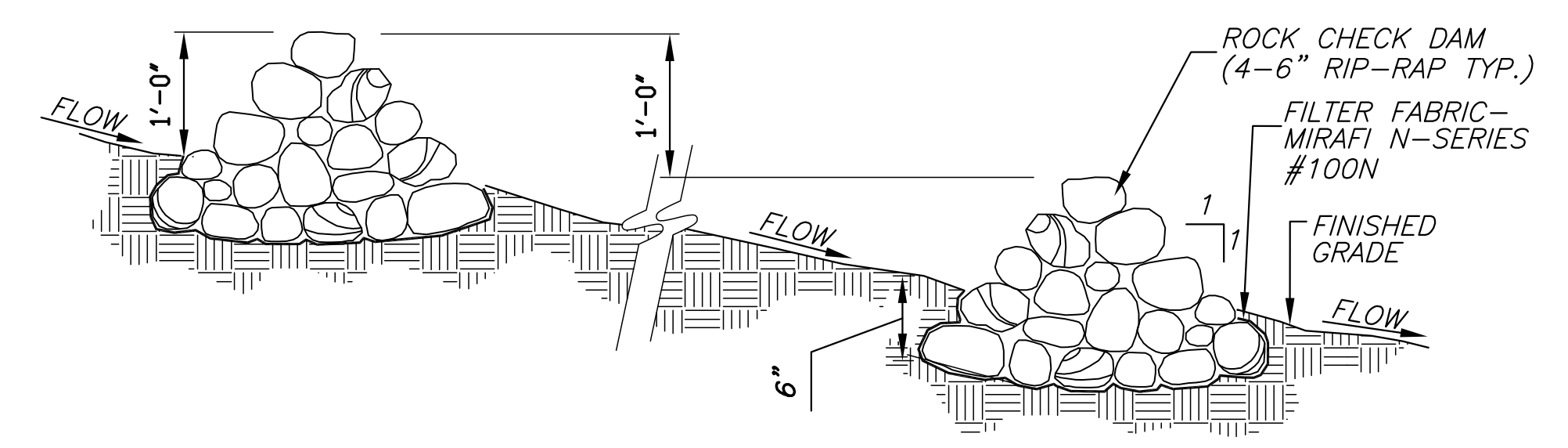
EROSION CONTROL/SEEDING NOTES

1. EROSION CONTROL IS TO MEET ALL FEDERAL, STATE, COUNTY AND LOCAL CODE STANDARDS.
2. TEMPORARY SEEDING MIX: ALL AREAS DISTURBED WITH EXCEPTION OF PROPOSED STREET PAVEMENT SHALL BE SEEDED (COST SUBSIDIARY TO PROJECT) AND FERTILIZED AS FOLLOWS IMMEDIATELY AFTER GRADING OPERATIONS ARE COMPLETE:
 - OATS @ 45 LBS./ACRE
 - "REGREEN" STERILE WHEAT @ 45 LBS./ACRE
 - CANADA WILD RYE @ 20 LBS./ACRE
 - 110 LBS./ACRE TOTAL
 - SLOW RELEASE @ 150 LBS./ACRE

PERMANENT SEEDING:
SHARP'S SHORTGRASS MIX

% MIX	COMMON NAME
50%	BLUE GRAMA
25%	BUFFALO GRASS, SHARP'S IMPROVED PRIMED
25%	SIDE OATS GRAMA
SEED 15 PLS (pure live seed) POUNDS PER ACRE AND	
SEED ANNUAL RYE 100 POUNDS PER ACRE	
MIX IS AVAILABLE THROUGH SHARP BROS. SEED CO., 1-800-421-4234	

3. ALL AREAS SHALL BE FINE GRADED AND SURFACE SHALL BE FREE FROM LIMBS, STONES, AND OTHER EXTRANEIOUS MATERIALS.
4. CONTRACTOR SHALL PROVIDE EROSION PROTECTION THROUGHOUT PROJECT CONSTRUCTION. THE PLAN PROVIDED HERE IS FOR FINAL PROTECTION, VARIOUS PHASES OF THIS PLAN SHALL BE IMPLEMENTED OR MODIFIED TO CONTROL EROSION. MODIFICATIONS OF THE PLAN SHALL BE APPROVED BY THE OWNER'S REPRESENTATIVE.
5. SEEDING AREAS SHALL BE PREPARED FOR PLANTING WITH COMMON AGRICULTURAL TECHNIQUES. APPROVE WITH OWNER'S REPRESENTATIVE BEFORE PLANTING.
6. ALL SEED SHALL BE DISTRIBUTED WITH AN ACCEPTABLE DRILL INTENDED FOR SUCH OPERATIONS, OR OTHER EQUIPMENT APPROVED BY THE OWNER'S REPRESENTATIVE. SEEDING DEPTH SHALL BE 1/4 OF AN INCH.
7. ALL SEEDED AREAS SHALL BE IMMEDIATELY MULCHED WITH CLEAN PRAIRIE HAY CERTIFIED BY THE NORTH AMERICAN FORAGE ASSOCIATION AT 2 TONS/ACRE. ANCHOR MULCH BY CRIMPING INTO TOPSOIL WITH SUITABLE MECHANICAL EQUIPMENT.
8. CONTRACTOR IS RESPONSIBLE FOR MAINTAINING AND IMPLEMENTING ALL EROSION CONTROL.
9. IN ORDER TO PREVENT SILT OR SEDIMENT FROM ENTERING ADJACENT PROPERTIES, APPROPRIATE BMP'S SHALL BE IMPLEMENTED WITHIN THE PROJECT.
10. ANY MUD TRACKED ONTO ADJACENT PAVED AREAS OR STREETS SHALL BE REMOVED AT THE END OF EACH WORK DAY.
11. PER THE REQUIREMENTS OF THE NOI/SWPPP, BMP INSPECTION REPORTS SHALL BE COMPLETED BY THE CONTRACTOR WEEKLY AND WITHIN 24 HOURS AFTER A 1/2" RAIN. REPORTS SHALL BE KEPT WITH THE SWPPP ON SITE.
12. CONTRACTOR SHALL PROVIDE A SIGN NEAR THE ENTRANCE WITH THE FOLLOWING INFORMATION:
 - A. CONTACT NAME AND INFORMATION
 - B. A COPY OF THE NOI
 - C. LOCATION OF SWPPP
14. CONTRACTOR SHALL MAINTAIN ALL EROSION CONTROL DEVICES IN-PLACE PRIOR TO AND DURING CONSTRUCTION.



ROCK CHECK DAM - SECTION
SCALE: N.T.S.

EVERY ATTEMPT HAS BEEN MADE TO INSURE ALL COORDINATE VALUES SHOWN ARE AN ACCURATE AND TRUE REPRESENTATION OF THE CURRENT PLANS. ALL VALUES ARE TO BE CONFIRMED WITH THE FINAL SIGNED PLAN SET BEFORE USE.



STORM WATER SEWER PLAN FOR
KRUG SOUTH ADDITION
PHASE 2

©2016 MKEC Engineering All Rights Reserved www.mkec.com
 These drawings and their contents, including, but not limited to, all concepts, designs, & ideas are the exclusive property of MKEC Engineering (MKEC), and may not be used or reproduced in any way without the express consent of MKEC.

GRADING & EROSION CONTROL PLAN

PROJECT NO.	468-84324	
DATE	MAY 2016	
SCALE	1"=40'	
DESIGNED	DRAWN	CHECKED
DFL	MLP	GJA
NO.	REVISION	DATE
SHEET NO.		
3 OF 9		