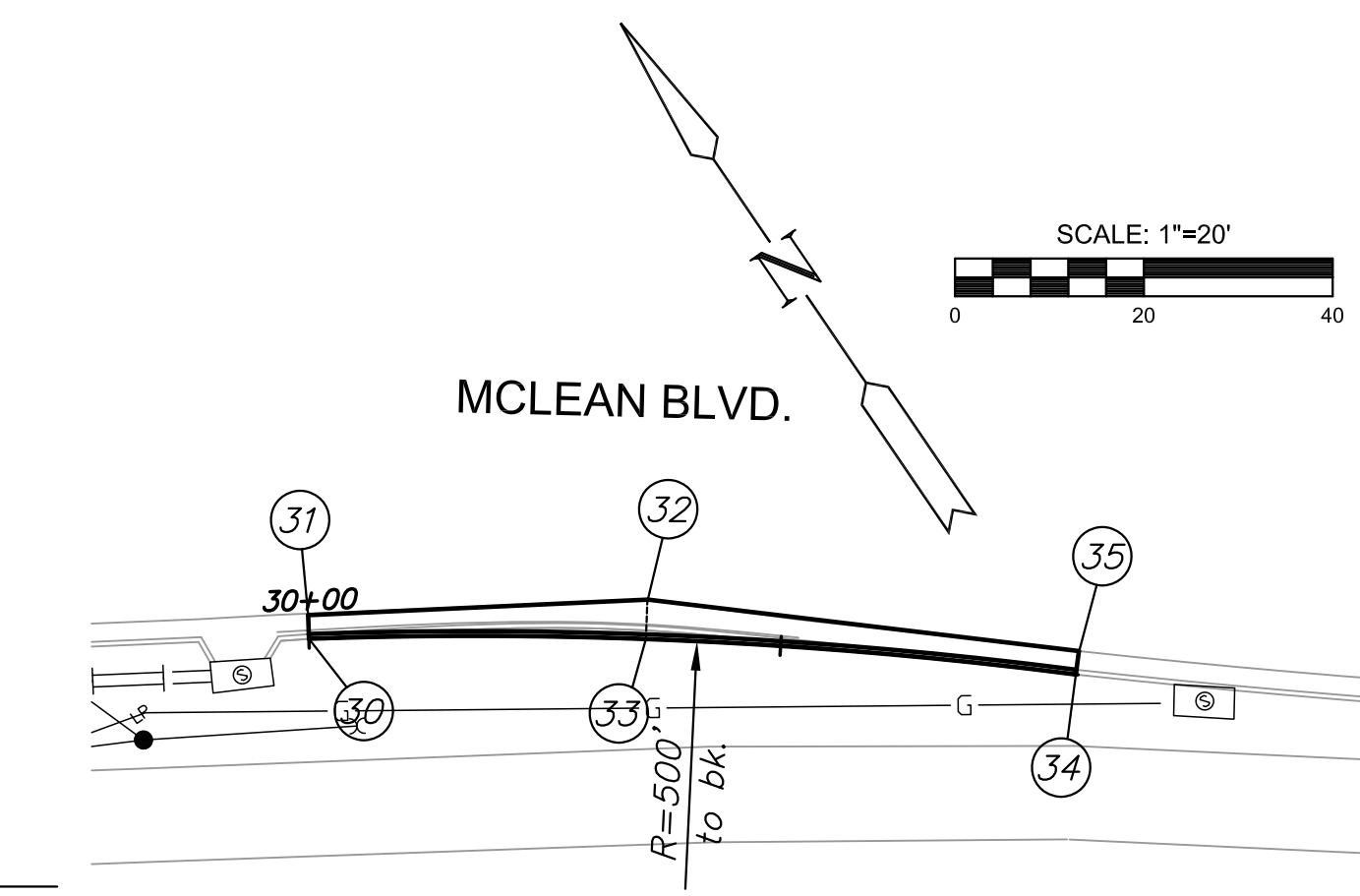
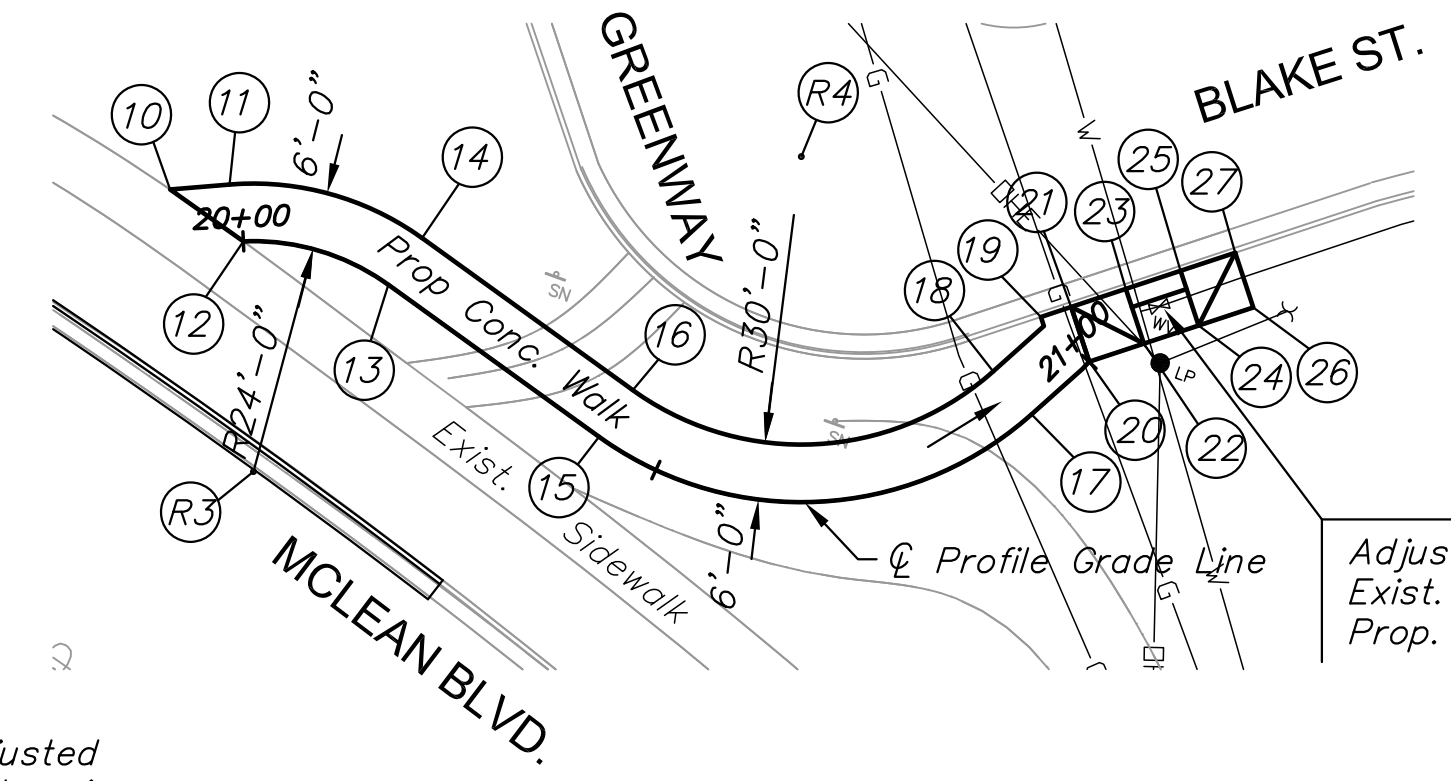
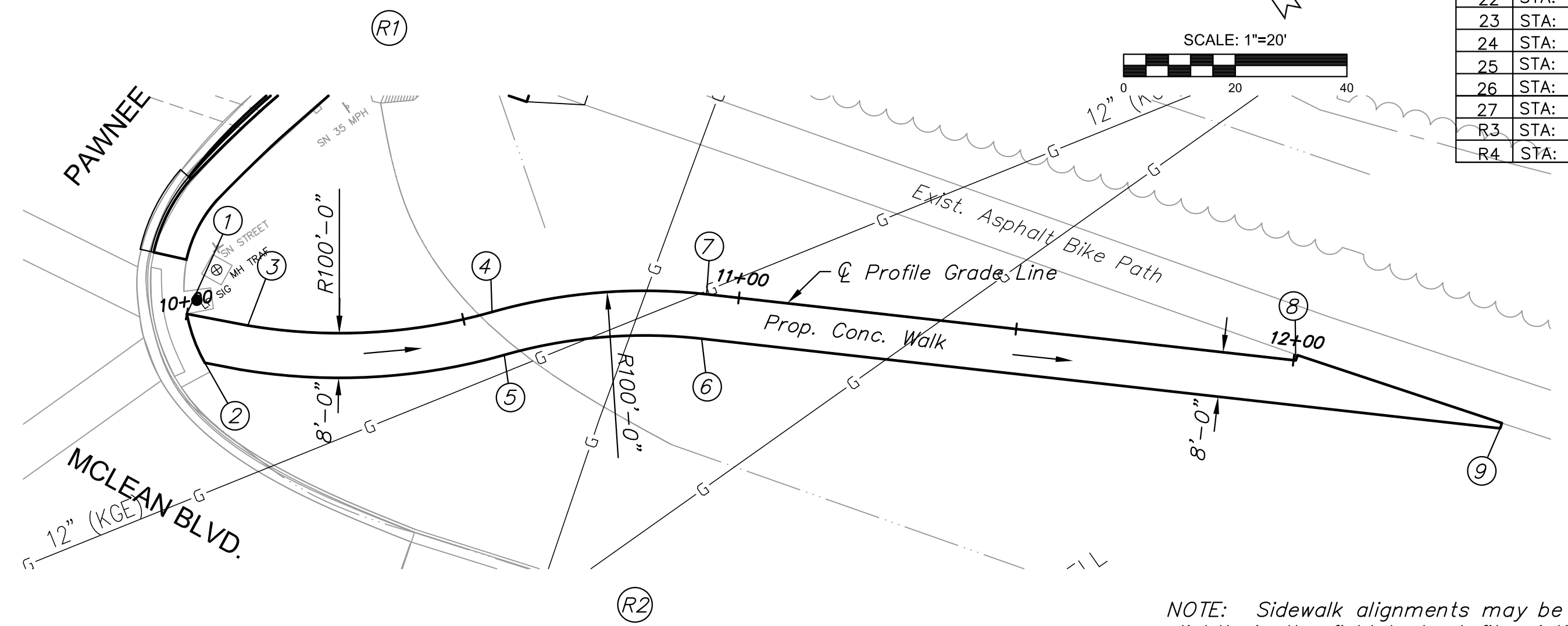


**PAWNEE AVENUE BRIDGE OVER  
ARKANSAS RIVER  
BRIDGE REHABILITATION IMPROVEMENTS**

SIDEWALK "A" POINT TABLE					
PT.NO.	STATIONING	OFFSET	NORTHING	EASTING	ELEVATION
1	STA. 10+00.00	0.00 R	N 1673173.0740	E 1646217.0440	1289.26 (EXIST.)
2	STA. 10+04.80	8.00 R	N 1673164.0540	E 1646214.6565	1289.33 (EXIST.)
3	STA. 10+11.12	0.00 R	N 1673165.0995	E 1646224.7985	1288.76
4	STA. 10+55.31	0.00 R	N 1673141.9912	E 1646262.0369	1286.66
5	STA. 10+55.31	8.00 R	N 1673134.4345	E 1646259.4107	1286.83
6	STA. 10+94.19	0.00 R	N 1673122.5382	E 1646295.3476	1284.72
7	STA. 10+94.19	8.00 R	N 1673116.5377	E 1646290.0565	1284.89
8	STA. 12+00.40	0.00 R	N 1673052.2934	E 1646375.0105	1279.44
9	STA. 12+01.40	38.56 R	N 1673021.9191	E 1646398.8411	1279.24
R1	STA. 10+08.82	100.00 L	N 1673236.4495	E 1646294.8640	--
R2	STA. 10+94.19	100.00 R	N 1673047.5328	E 1646229.2098	--

SIDEWALK "B" POINT TABLE					
PT.NO.	STATIONING	OFFSET	NORTHING	EASTING	ELEVATION
10	STA. 19+92.62	6.00 L	N 1673262.7820	E 1646654.5457	1292.16 EXIST.
11	STA. 19+98.82	6.00 L	N 1673265.3825	E 1646660.1795	1292.00
12	STA. 20+00	0.00 L	N 1673260.3131	E 1646663.5587	1292.13 EXIST.
13	STA. 20+16.06	0.00 R	N 1673261.2345	E 1646679.2983	1291.56
14	STA. 20+16.06	6.00 L	N 1673267.0070	E 1646680.9347	1291.44
15	STA. 20+43.13	0.00 R	N 1673253.8529	E 1646705.3371	1290.42
16	STA. 20+43.13	6.00 L	N 1673259.6254	E 1646706.9735	1290.30
17	STA. 20+90.41	0.00 R	N 1673270.1788	E 1646746.1520	1288.43
18	STA. 20+91.89	6.00 L	N 1673274.2976	E 1646741.5873	1288.31
19	STA. 20+99.98	6.86 L	N 1673281.3267	E 1646744.3200	1287.96 EXIST.
20	STA. 21+00.03	0.00 R	N 1673278.6716	E 1646750.6407	1288.03
21	STA. 21+00.03	6.00 L	N 1673283.3815	E 1646746.9235	1287.92 EXIST.
22	STA. 21+06.03	0.00 R	N 1673282.3888	E 1646755.3505	1287.81
23	STA. 21+06.03	6.00 L	N 1673287.0986	E 1646751.6333	1287.56
24	STA. 21+12.03	0.00 R	N 1673286.1060	E 1646760.0603	1287.79
25	STA. 21+12.03	6.00 L	N 1673290.8158	E 1646756.3432	1287.54
26	STA. 21+18.03	0.00 R	N 1673289.7741	E 1646764.8089	1287.86
27	STA. 21+18.03	6.00 L	N 1673294.5330	E 1646761.0530	1287.73 EXIST.
R3	STA. 20+09.43	24.00 R	N 1673238.1444	E 1646672.7526	--
R4	STA. 20+91.89	36.00 L	N 1673288.4881	E 1646715.1556	--

CURB & GUTTER POINT TABLE					
PT.NO.	STATIONING	OFFSET	NORTHING	EASTING	ELEVATION
30	STA. 30+00.00	0.00 R	N 1673078.9891	E 1646846.3072	1287.69 EXIST.
31	STA. 30+00.01	2.50 L	N 1673081.0803	E 1646847.6772	1287.29 EXIST.
32	STA. 30+35.71	4.19 L	N 1673061.8270	E 1646878.0649	1287.48 EXIST.
33	STA. 30+35.71	0.00 L	N 1673058.4843	E 1646875.5372	1287.81
34	STA. 30+81.42	0.00 L	N 1673029.2882	E 1646910.6857	1287.16 EXIST.
35	STA. 30+81.42	2.50 L	N 1673031.1363	E 1646912.3693	1286.83 EXIST.

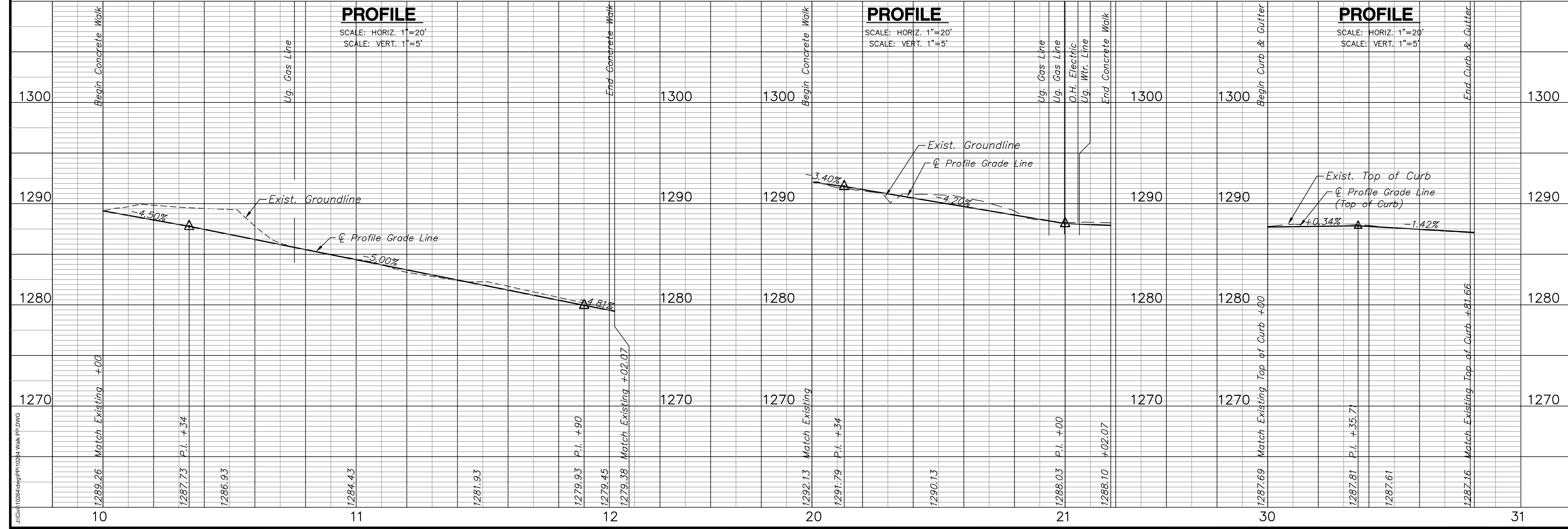


NOTE: Sidewalk alignments may be adjusted slightly in the field to best fit existing terrain. In no instance shall the Contractor exceed 1/4"/ft. cross slope nor exceed 5% longitudinal slope.

**PLAN - SIDEWALK "A"**

**PLAN - SIDEWALK "B"**

**PLAN - CURB & GUTTER**



©2013 MKEC Engineering All Rights Reserved  
These drawings and their contents, including, but not limited to, all concepts, designs, & ideas are the exclusive property of MKEC Engineering (MKEC), and may not be used or reproduced in any way without the express consent of MKEC.

**SIDEWALK AND CURB PLAN AND PROFILE**

PROJECT NO.	472-84922	
DATE	04/05/2016	
SCALE	1"=20'	
DESIGNED	DRAWN	CHECKED
JRA	DPG	JRA
NO.	REVISION	DATE