

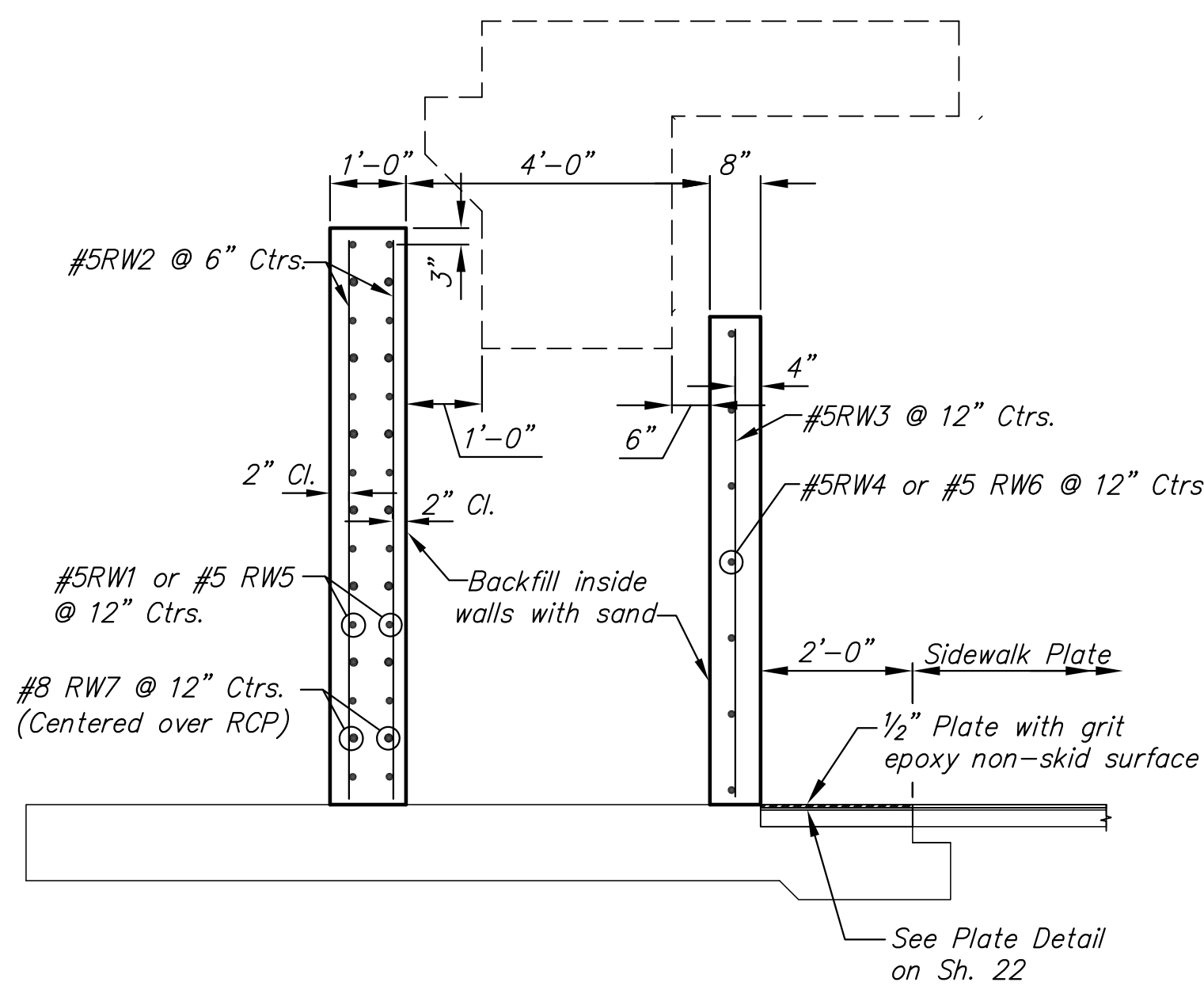
PLOTTED: Tuesday, April 05, 2016 @ 11:56AM

PAWNEE AVENUE BRIDGE OVER ARKANSAS RIVER
BRIDGE REHABILITATION IMPROVEMENTS

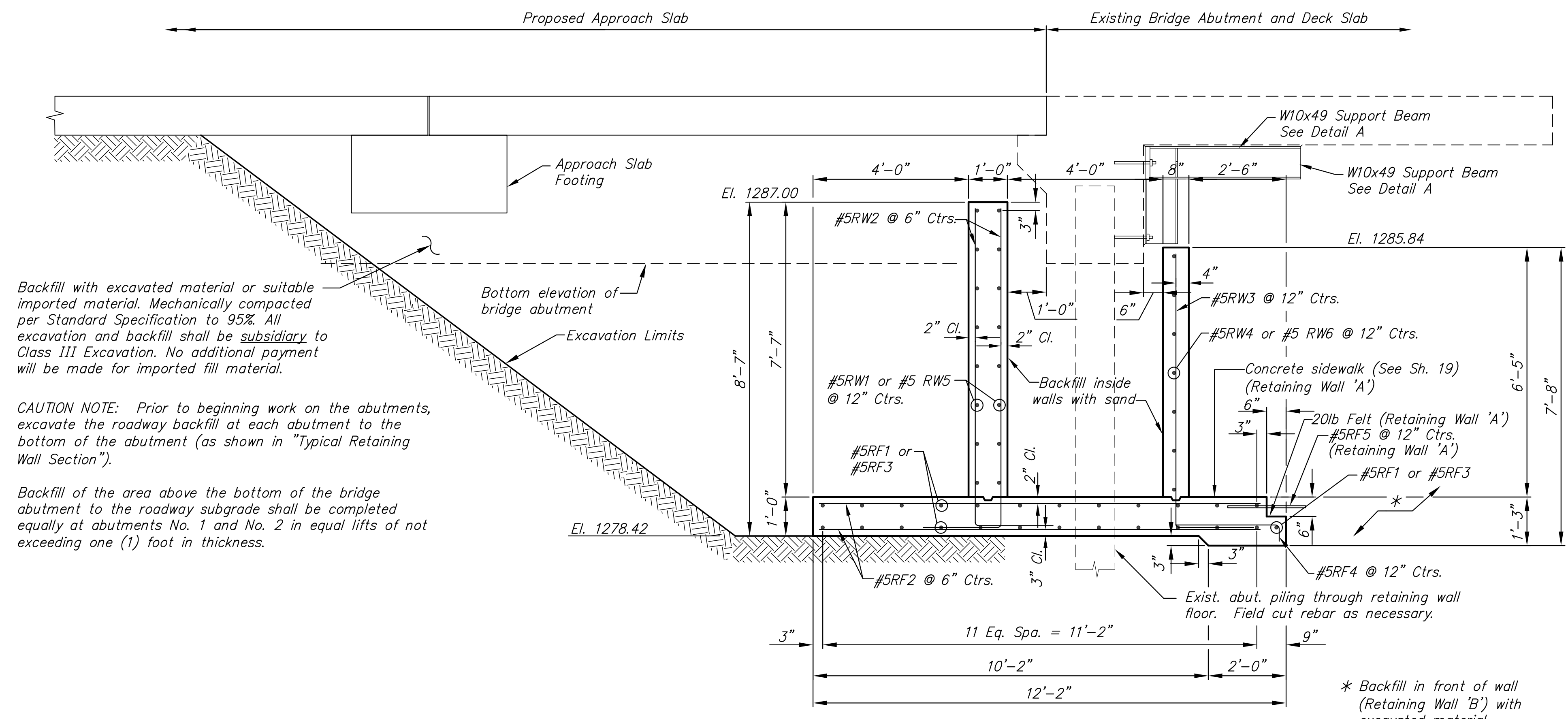
©2013 MKEC Engineering All Rights Reserved www.mkec.com
These drawings and their contents, including, but not limited to, all concepts, designs, & ideas are the exclusive property of MKEC Engineering (MKEC), and may not be used or reproduced in any way without the express consent of MKEC.

RETAINING WALL SECTION AND ELEVATION

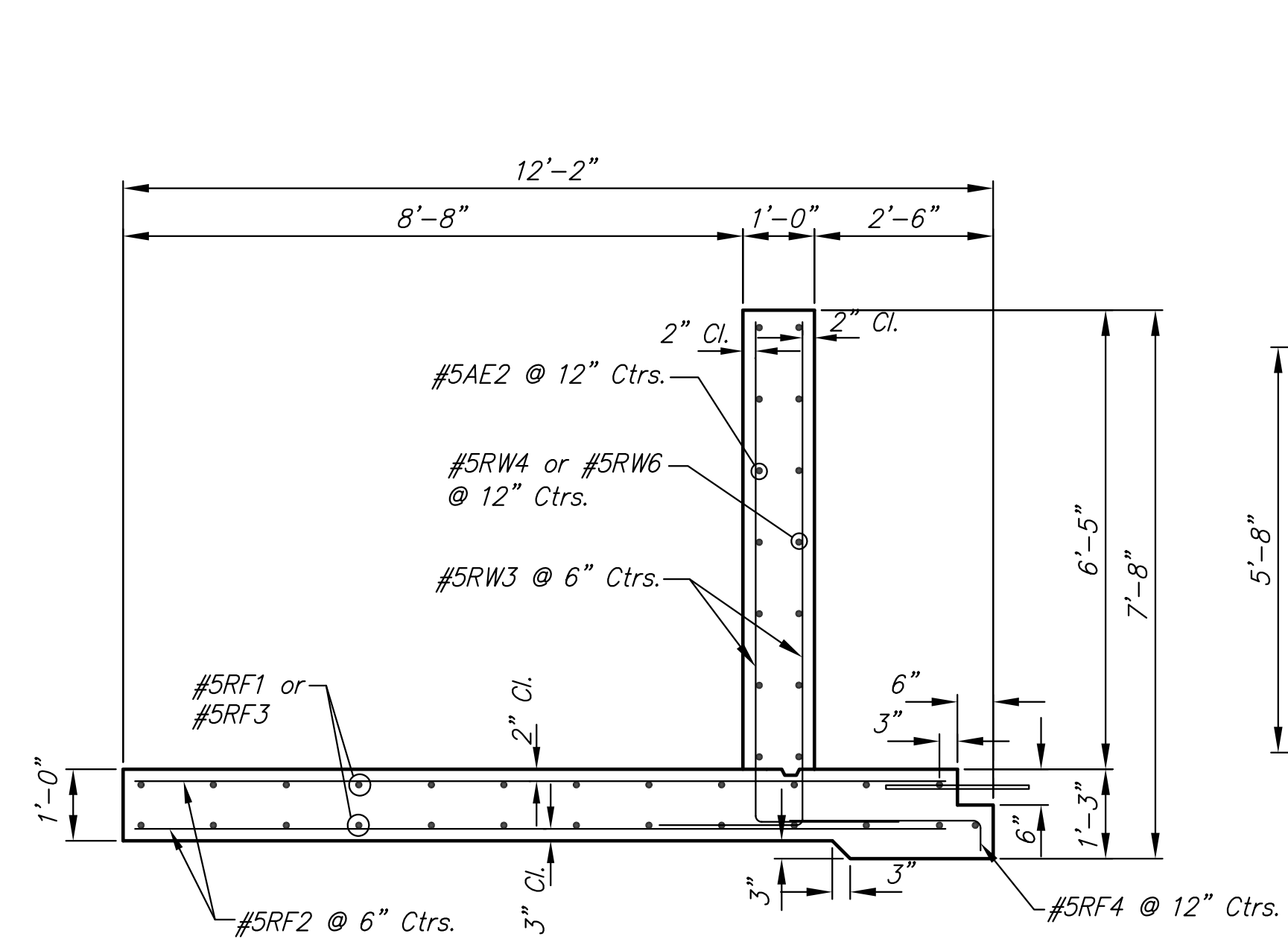
PROJECT NO.	472-84922	
DATE	04/05/2016	
SCALE	3/8" = 1'-0"	
DESIGNED	DRAWN	CHECKED
HWL	DPG	KJS
NO.	REVISION	DATE
SHEET NO.	21 OF 51	



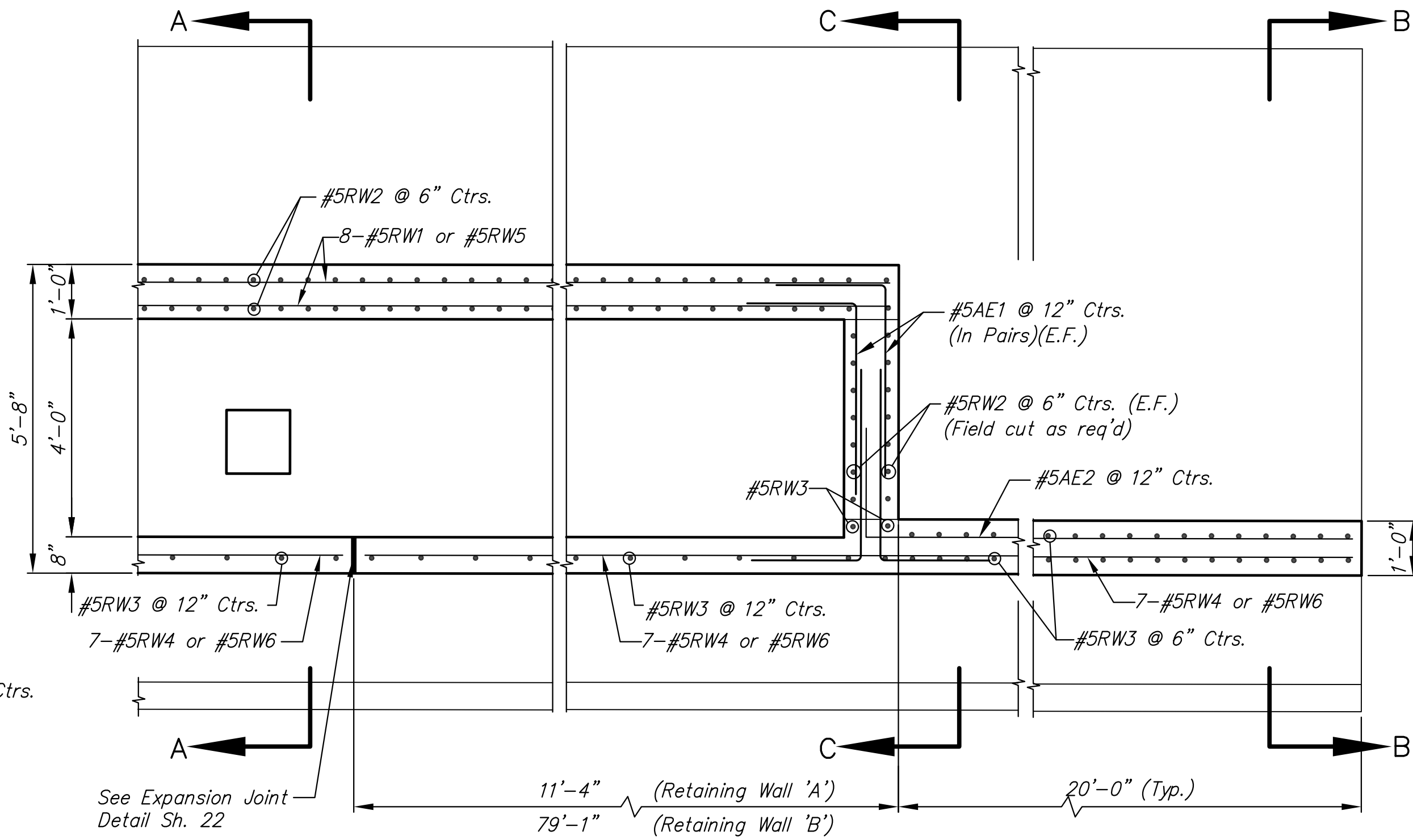
RETAINING WALL 'A' SECTION AT 72" RCP CROSSING
Sta. 49+46.97 to Sta. 49+52.97



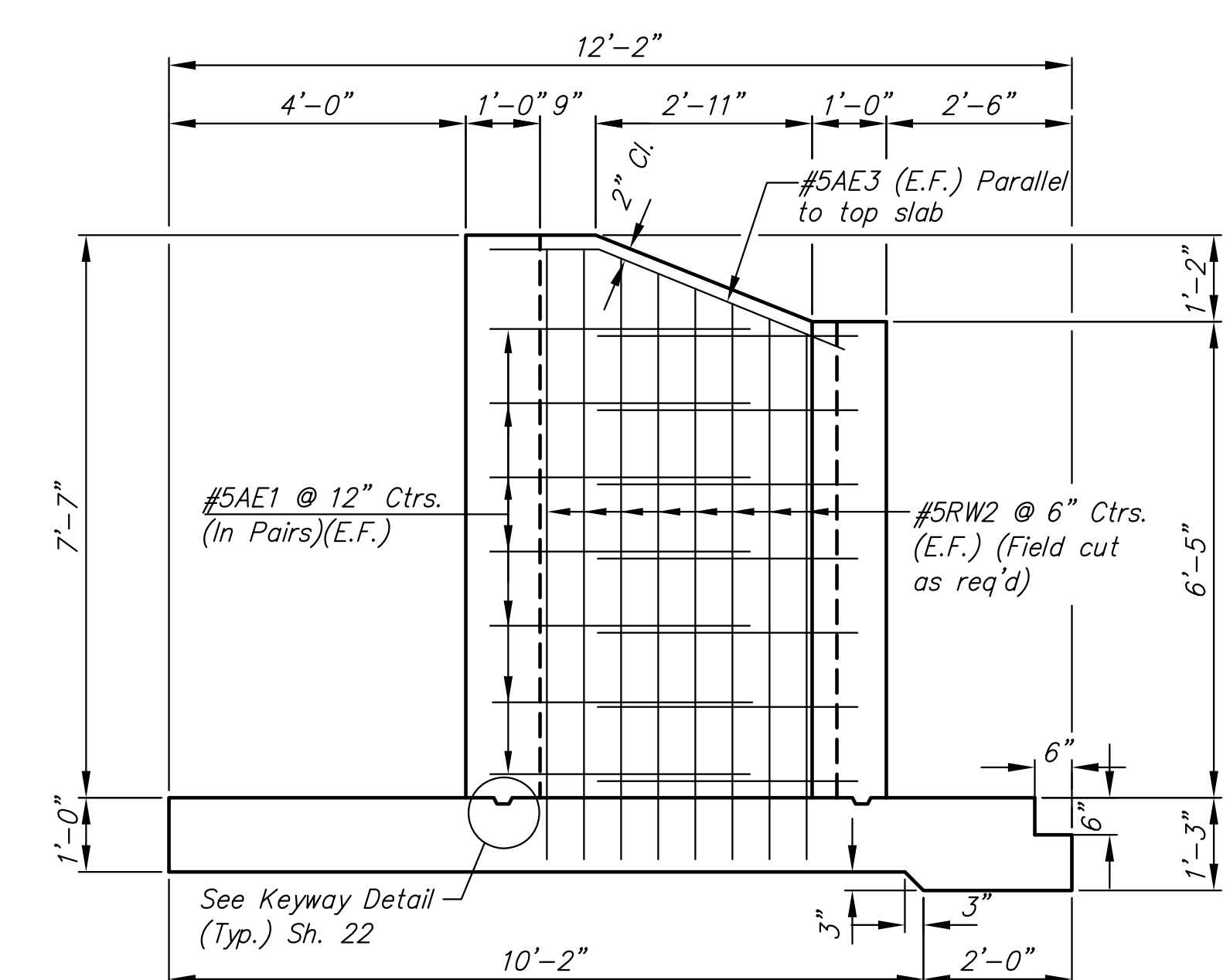
SECTION A-A
TYPICAL RETAINING WALL SECTION



SECTION B-B



PARTIAL PLAN RETAINING WALL



SECTION C-C

S:\CHN10264\dwg\PT10264 WALL DETAIL 1.dwg