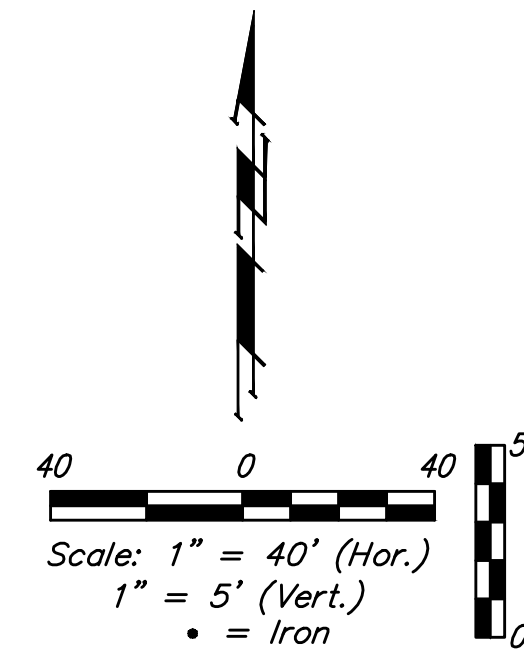
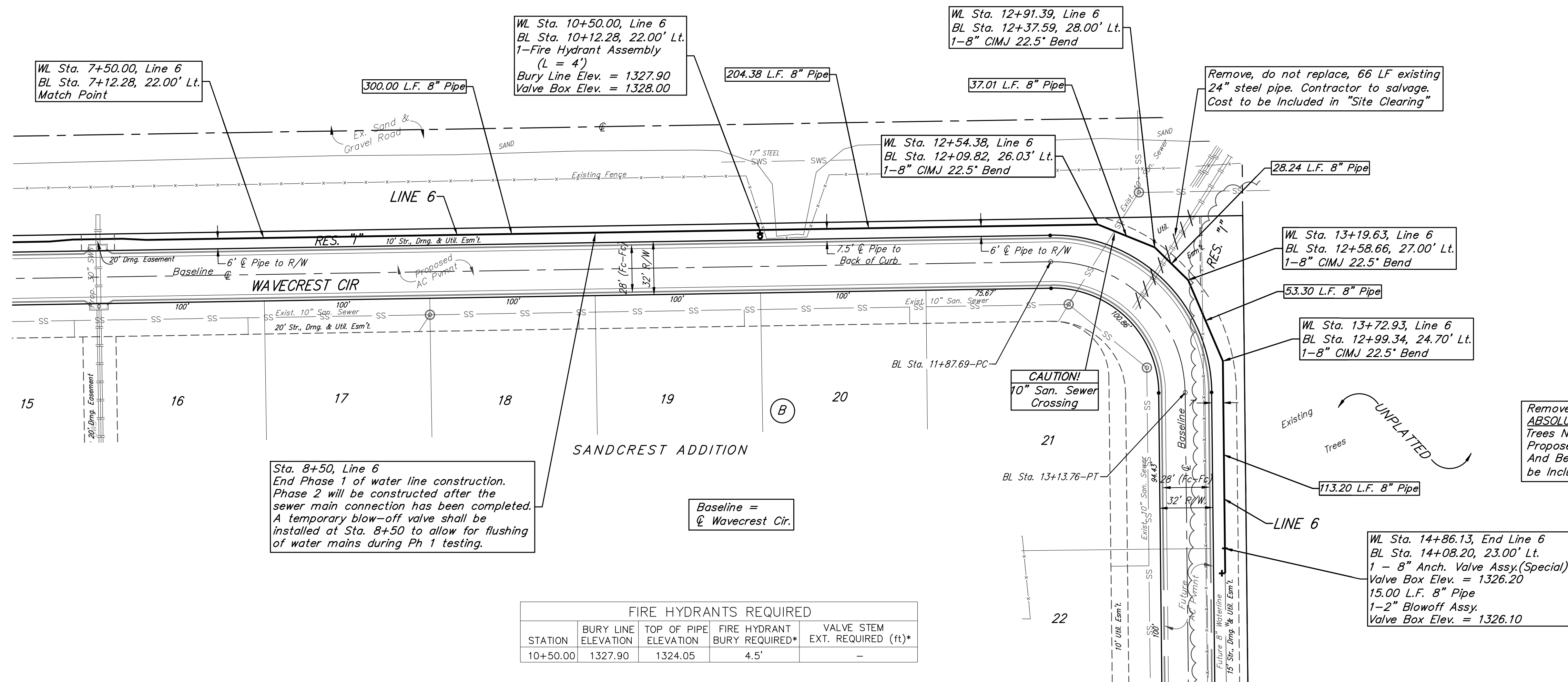


BENCHMARKS:
 CITY OF WICHITA BENCHMARK DISK
 34.9' S. & 31.2' W. OF THE SW COR.,
 NW1/4, SEC. 2, TWP. 27-S, R-1-W.
 ELEV. = 1327.57 NAVD88

CITY OF WICHITA BENCHMARK DISK
 26.2' S. & 46.1' W. OF THE NW COR.,
 NW1/4, SEC. 2, TWP. 27-S, R-1-W.
 ELEV. = 1330.50 NAVD88

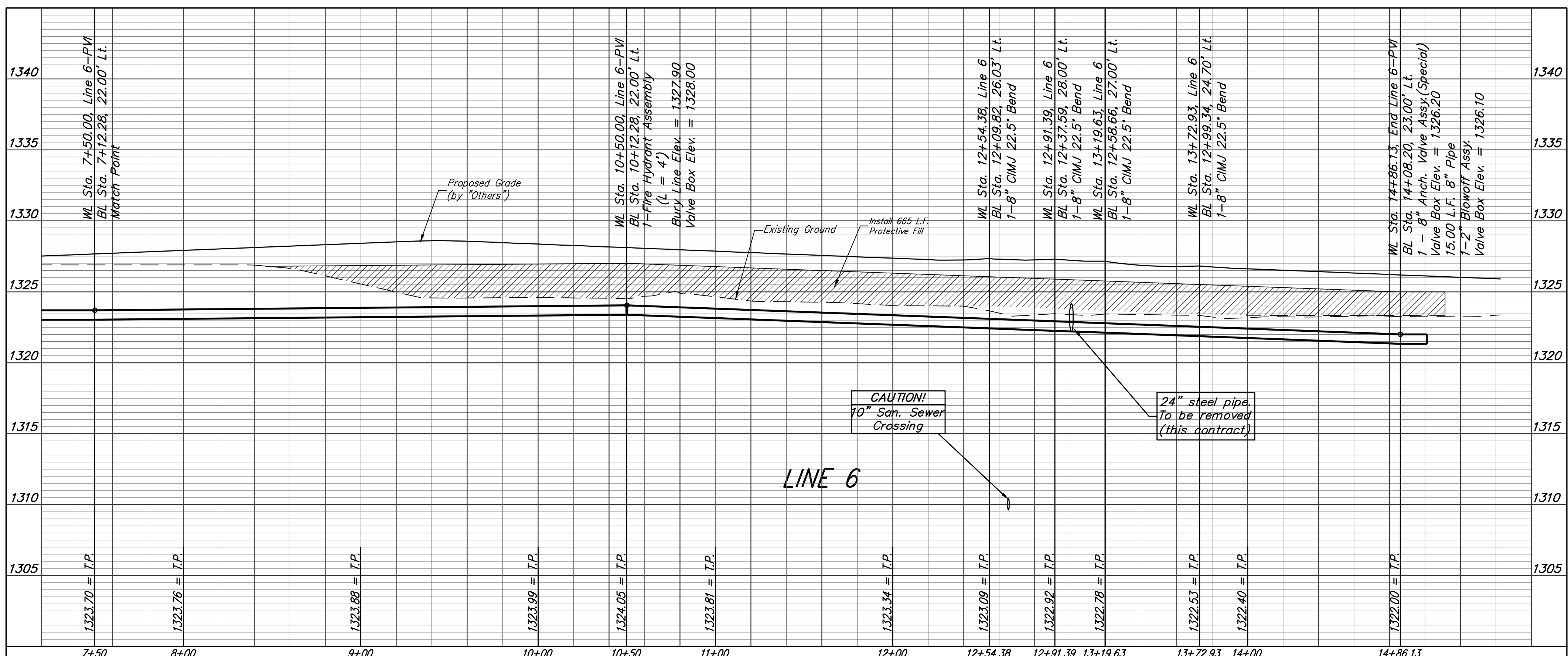
CITY OF WICHITA BENCHMARK DISK
 0.9' E. & 29' N. OF THE NE COR.,
 NW1/4, SEC. 2, TWP. 27-S, R-1-W.
 ELEV. = 1325.19 NAVD88



Sta. 8+50, Line 6
 End Phase 1 of water line construction.
 Phase 2 will be constructed after the
 sewer main connection has been completed.
 A temporary blow-off valve shall be
 installed at Sta. 8+50 to allow for flushing
 of water mains during Ph 1 testing.

Baseline =
 @ Wavecrest Cir.

FIRE HYDRANTS REQUIRED				
STATION	BURY LINE ELEVATION	TOP OF PIPE ELEVATION	FIRE HYDRANT BURY REQUIRED*	VALVE STEM EXT. REQUIRED (ft)*
10+50.00	1327.90	1324.05	4.5'	-



Baughman Sandcrest Addition - Phase I
LINE 6
 Water Distribution System

Baughman Company, P.A. 315 Ellis St. Wichita, KS 67211 P 316-262-7271 F 316-262-0149
 ENGINEERING | SURVEYING | PLANNING | LANDSCAPE ARCHITECTURE

PROJECT NUMBER: 448-90702
 DESIGN: AEG
 DRAWN: JAK
 APPROVED: [Signature]
 DATE: 5/17/16

REVISIONS:

SCALE: Noted
 SHEET: **10 OF 19**

E:\Projects\Pearl Beach_1202\F860\Engineering\Phase 1\Wtr_1510E317\WTR PLANS.dwg