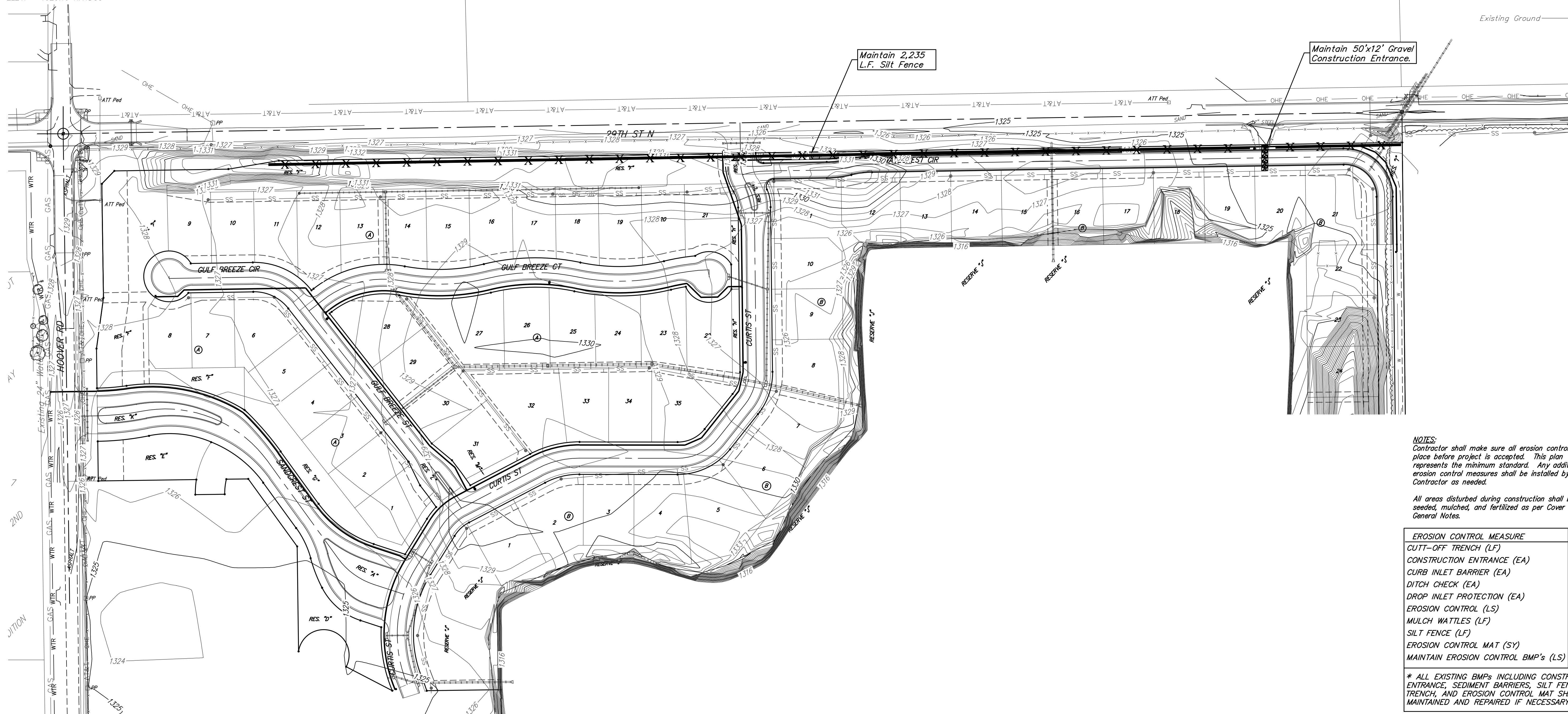
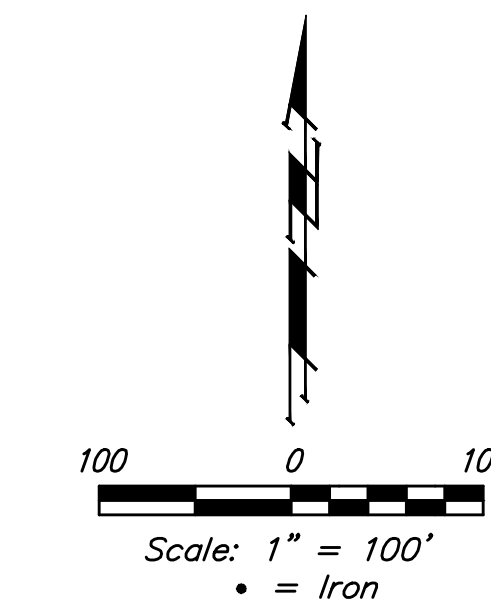


BENCHMARKS:
 CITY OF WICHITA BENCHMARK DISK
 34.9' S. & 31.2' W. OF THE SW COR.,
 NW1/4, SEC. 2, TWP. 27-S, R-1-W.
 ELEV. = 1327.57 NAVD88

CITY OF WICHITA BENCHMARK DISK
 26.2' S. & 46.1' W. OF THE NW COR.,
 NW1/4, SEC. 2, TWP. 27-S, R-1-W.
 ELEV. = 1330.50 NAVD88

CITY OF WICHITA BENCHMARK DISK
 0.9' E. & 29' N. OF THE NE COR.,
 NW1/4, SEC. 2, TWP. 27-S, R-1-W.
 ELEV. = 1325.19 NAVD88



NOTES:
 Contractor shall make sure all erosion control is in place before project is accepted. This plan represents the minimum standard. Any additional erosion control measures shall be installed by the Contractor as needed.

All areas disturbed during construction shall be seeded, mulched, and fertilized as per Cover Sheet General Notes.

EROSION CONTROL MEASURE	MAINTAIN
CUTT-OFF TRENCH (LF)	0
CONSTRUCTION ENTRANCE (EA)	1
CURB INLET BARRIER (EA)	0
DITCH CHECK (EA)	0
DROP INLET PROTECTION (EA)	0
EROSION CONTROL (LS)	0
MULCH WATTLES (LF)	0
SILT FENCE (LF)	2,235
EROSION CONTROL MAT (SY)	0
MAINTAIN EROSION CONTROL BMP's (LS)	0

* ALL EXISTING BMPs INCLUDING CONSTRUCTION ENTRANCE, SEDIMENT BARRIERS, SILT FENCE, CUT-OFF TRENCH, AND EROSION CONTROL MAT SHALL BE MAINTAINED AND REPAIRED IF NECESSARY.



Baughman Sandcrest Addition - Phase I
EROSION CONTROL
 Sanitary Sewer Improvements

Baughman Company, P.A. 315 Ellis St. Wichita, KS 67211 P 316-262-7271 F 316-262-0149
 ENGINEERING | SURVEYING | PLANNING | LANDSCAPE ARCHITECTURE

PROJECT NUMBER 448-90702	DESIGN AEG	DRAWN JAK
REVISIONS:	APPROVED	DATE 5/17/16
	SCALE Noted	SHEET 11 OF 19