

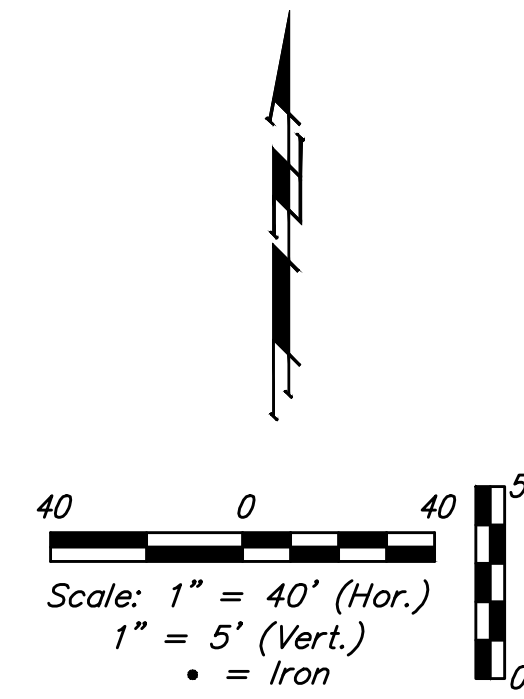
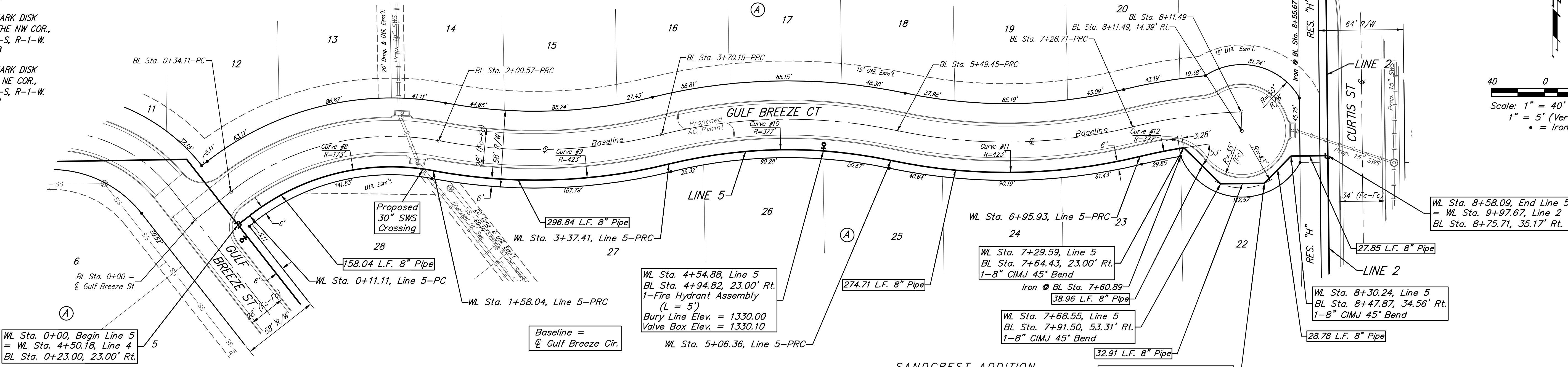
BENCHMARKS:
 CITY OF WICHITA BENCHMARK DISK
 34.9' S. & 31.2' W. OF THE SW COR.,
 NW1/4, SEC. 2, TWP. 27-S, R-1-W.
 ELEV. = 1327.57 NAVD88

CITY OF WICHITA BENCHMARK DISK
 26.2' S. & 46.1' W. OF THE NW COR.,
 NW1/4, SEC. 2, TWP. 27-S, R-1-W.
 ELEV. = 1330.50 NAVD88

CITY OF WICHITA BENCHMARK DISK
 0.9' E. & 29' N. OF THE NE COR.,
 NW1/4, SEC. 2, TWP. 27-S, R-1-W.
 ELEV. = 1325.19 NAVD88

SANDCREST ADDITION

FIRE HYDRANTS REQUIRED				
STATION	BURY LINE ELEVATION	TOP OF PIPE ELEVATION	FIRE HYDRANT BURY REQUIRED*	VALVE STEM EXT. REQUIRED (ft)*
4+54.88	1330.00	1325.65	5'	-



Curve #8
 Curve Data Based on Centerline of Pipe
 Rad. = 173' Delta = 48°39'38" Tangent = 78.22'
 Arc = 147.04' L.C. = 142.55' Def./Ft. = 9.92802 Min.

Station	Arc	Chord 8' Right	Defl.	Total Defl.
0+11.00	-	-	0'00"00"	0'00"00"
0+25.00	14.00'	13.34'	2'19"00"	2'19"00"
0+50.00	25.00'	23.80'	4'08"12"	6'27"12"
0+75.00	25.00'	23.80'	4'08"12"	10'35'24"
1+00.00	25.00'	23.80'	4'08"12"	14'43'36"
1+25.00	25.00'	23.80'	4'08"12"	18'51'48"
1+50.00	25.00'	23.80'	4'08"12"	23'00'00"
1+58.04	8.04'	7.66'	1'19'49"	24'19'49"

Curve #9
 Curve Data Based on Centerline of Pipe
 Rad. = 423' Delta = 24°17'46" Tangent = 91.05'
 Arc = 179.37' L.C. = 178.03' Def./Ft. = 4.06357 Min.

Station	Arc	Chord 8' Right	Defl.	Total Defl.
1+58.04	-	-	0'00"00"	0'00"00"
1+75.00	16.96'	17.28'	1'08"55"	1'08"55"
2+00.00	25.00'	25.47'	1'41'35"	2'50'30"
2+25.00	25.00'	25.47'	1'41'36"	4'32'06"
2+50.00	25.00'	25.47'	1'41'35"	6'13'41"
2+75.00	25.00'	25.47'	1'41'36"	7'55'17"
3+00.00	25.00'	25.47'	1'41'35"	9'36'52"
3+25.00	25.00'	25.47'	1'41'35"	11'18'27"
3+37.41	12.41'	12.64'	0'50'26"	12'08'53"

Curve #10
 Curve Data Based on Centerline of Pipe
 Rad. = 377' Delta = 25°40'38" Tangent = 85.92'
 Arc = 168.95' L.C. = 167.54' Def./Ft. = 4.55944 Min.

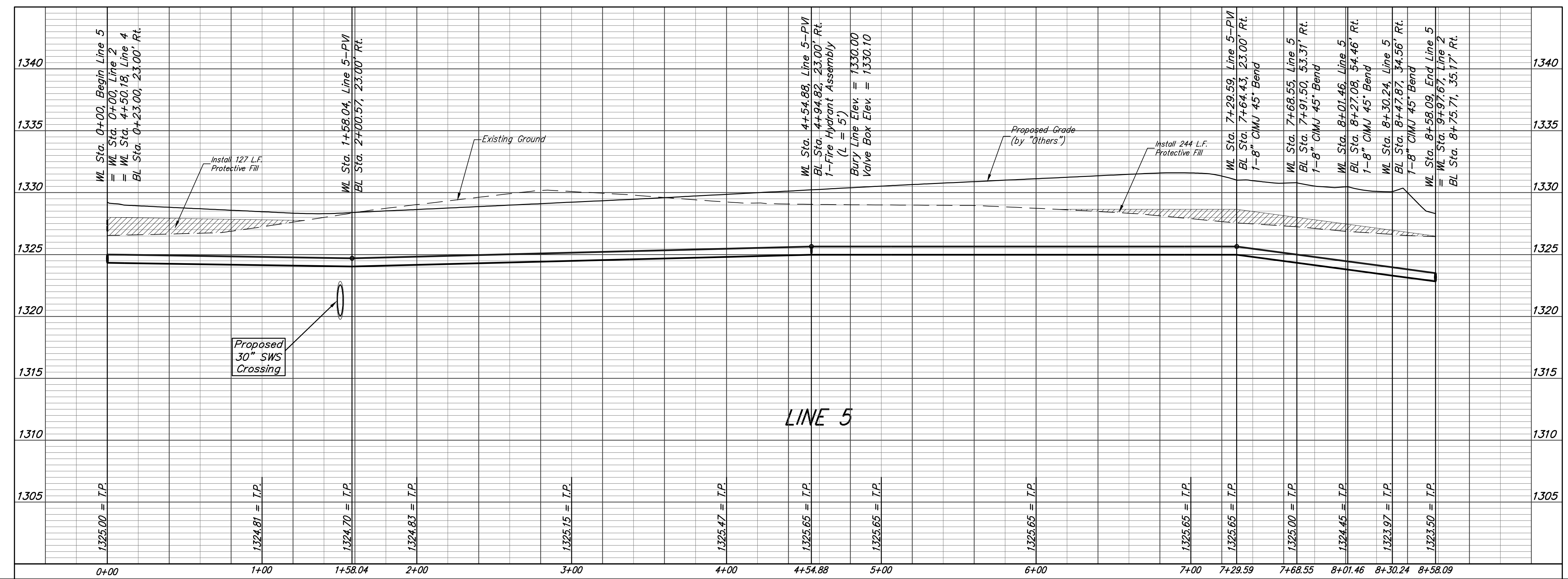
Station	Arc	Chord 8' Right	Defl.	Total Defl.
3+37.41	-	-	0'00"00"	0'00"00"
3+50.00	12.59'	12.32'	0'57'24"	0'57'24"
3+75.00	25.00'	24.47'	1'53'59"	2'51'23"
4+00.00	25.00'	24.47'	1'54'00"	4'45'23"
4+25.00	25.00'	24.47'	1'53'59"	6'39'22"
4+50.00	25.00'	24.47'	1'53'59"	8'33'21"
4+54.88	4.88'	4.78'	0'22'15"	8'55'36"
4+75.00	20.12'	19.69'	1'31'44"	10'27'20"
5+00.00	25.00'	24.47'	1'53'59"	12'21'19"
5+06.36	6.36'	6.23'	0'29'00"	12'50'19"

Curve #11
 Curve Data Based on Centerline of Pipe
 Rad. = 423' Delta = 25°40'38" Tangent = 96.40'
 Arc = 189.57' L.C. = 187.99' Def./Ft. = 4.06349 Min.

Station	Arc	Chord 8' Right	Defl.	Total Defl.
5+06.36	-	-	0'00"00"	0'00"00"
5+25.00	18.64'	18.99'	1'15'45"	1'15'45"
5+50.00	25.00'	25.47'	1'41'35"	2'57'20"
5+75.00	25.00'	25.47'	1'41'35"	4'38'55"
6+00.00	25.00'	25.47'	1'41'35"	6'20'30"
6+25.00	25.00'	25.47'	1'41'36"	8'02'06"
6+50.00	25.00'	25.47'	1'41'35"	9'43'41"
6+75.00	25.00'	25.47'	1'41'35"	11'25'16"
6+95.93	20.93'	21.32'	1'25'03"	12'50'19"

Curve #12
 Curve Data Based on Centerline of Pipe
 Rad. = 377' Delta = 5°06'57" Tangent = 16.84'
 Arc = 33.66' L.C. = 33.65' Def./Ft. = 4.55957 Min.

Station	Arc	Chord 8' Right	Defl.	Total Defl.
6+95.93	-	-	0'00"00"	0'00"00"
7+00.00	4.07'	3.98'	0'18'33"	0'18'33"
7+25.00	25.00'	24.47'	1'54'00"	2'12'33"
7+29.59	4.59'	4.49'	0'20'56"	2'33'29"



Baughman Sandcrest Addition - Phase I
LINE 5
 Water Distribution System

Baughman Company, P.A. 315 Ellis St. Wichita, KS 67211 P 316-262-7271 F 316-262-0149
 ENGINEERING | SURVEYING | PLANNING | LANDSCAPE ARCHITECTURE

PROJECT NUMBER: 448-90702 DESIGN: AEG DRAWN: JAK
 APPROVED: DATE: 5/17/16
 REVISIONS: SCALE: Noted SHEET: 8 OF 19

E:\Projects\Pearl Beach_1202\F860\Engineering\Phase 1\Wtr_15-10E317\WTR PLANS.dwg