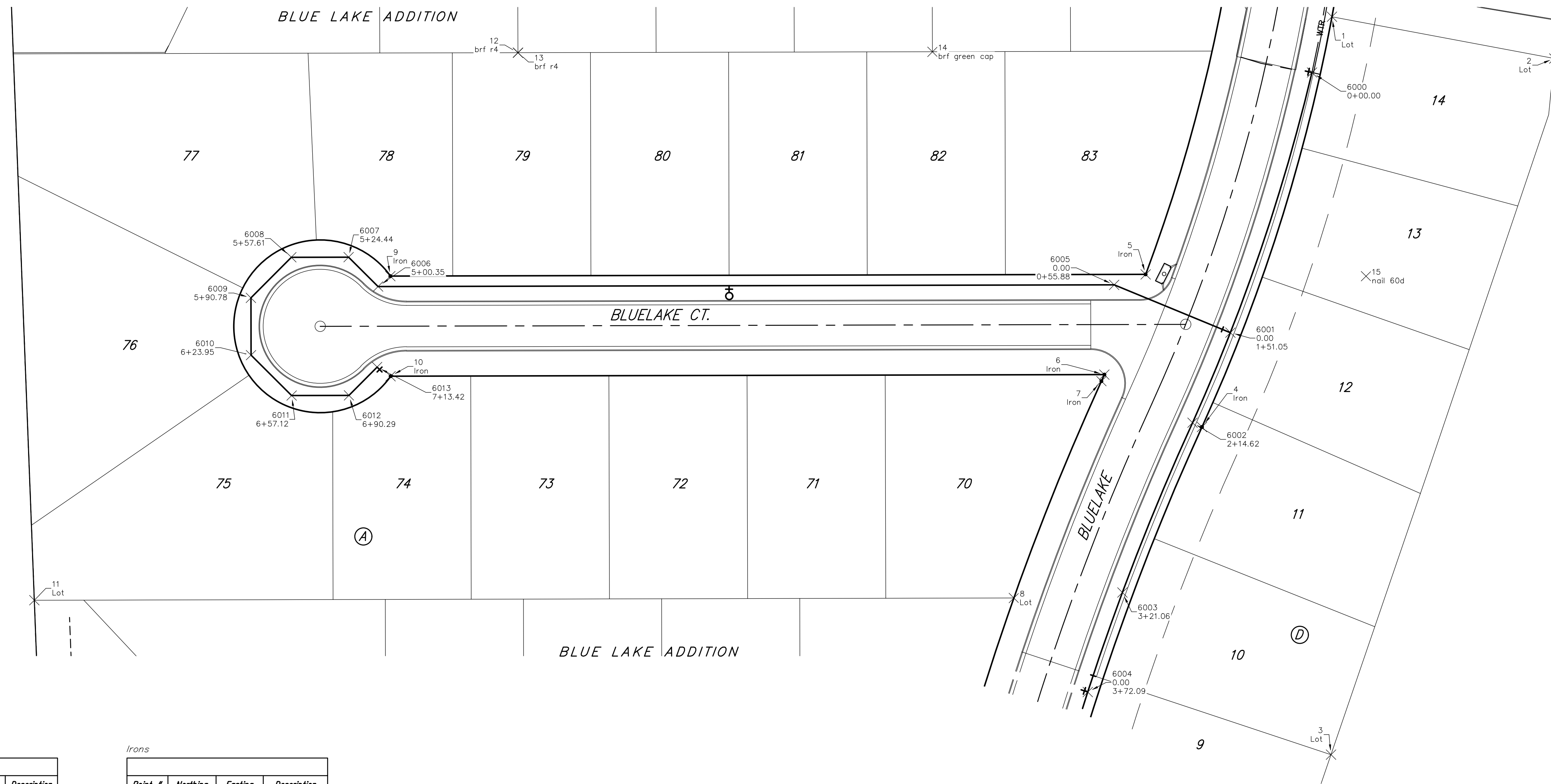
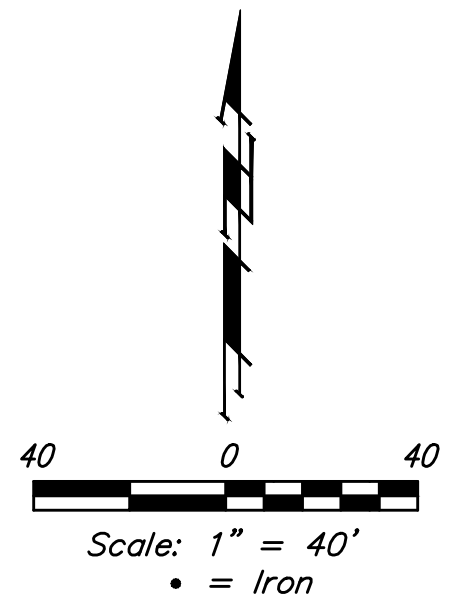


BENCHMARKS:

BM #1: "□" on top of South curb
 Bluelake Ct, Northwest corner of Lot
 84, Block A, Blue Lake Addition
 Elev. = 103.10 (City Datum)

BM #2: "□" Centerline face of Catch
 Basin, East Curb Lot 84, Block A,
 Blue Lake Addition
 Elev. = 101.95 (City Datum)

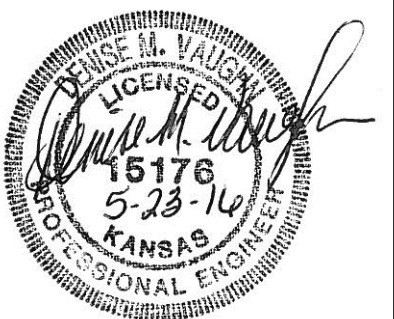


Water

| Point # | Northing | Easting | Description |
|---------|----------|----------|-------------|
| 6000 | 29903.35 | 32575.65 | 0+00.00 |
| 6001 | 29752.66 | 32528.39 | 1+51.05 |
| 6002 | 29700.51 | 32506.48 | 2+14.62 |
| 6003 | 29602.16 | 32465.85 | 3+21.06 |
| 6004 | 29544.51 | 32445.83 | 3+72.09 |
| 6005 | 29780.36 | 32461.08 | 0+55.88 |
| 6006 | 29779.39 | 32034.91 | 5+00.35 |
| 6007 | 29796.39 | 32017.83 | 5+24.44 |
| 6008 | 29796.32 | 31984.66 | 5+57.61 |
| 6009 | 29772.81 | 31961.26 | 5+90.78 |
| 6010 | 29739.64 | 31961.34 | 6+23.95 |
| 6011 | 29716.24 | 31984.84 | 6+57.12 |
| 6012 | 29716.32 | 32018.01 | 6+90.29 |
| 6013 | 29732.71 | 32034.34 | 7+13.42 |

Irons

| Point # | Northing | Easting | Description |
|---------|----------|----------|---------------|
| 1 | 29835.64 | 32587.21 | Lot |
| 2 | 29911.46 | 32715.91 | Lot |
| 3 | 29508.22 | 32586.65 | Lot |
| 4 | 29698.02 | 32511.94 | Iron |
| 5 | 29786.40 | 32479.36 | Iron |
| 6 | 29728.35 | 32455.42 | Iron |
| 7 | 29724.58 | 32453.71 | Iron |
| 8 | 29598.98 | 32403.02 | Lot |
| 9 | 29785.41 | 32042.00 | Iron |
| 10 | 29727.41 | 32042.13 | Iron |
| 11 | 29597.69 | 31835.84 | Lot |
| 12 | 29914.81 | 32115.86 | brf r4 |
| 13 | 29914.81 | 32115.96 | brf r4 |
| 14 | 29915.34 | 32355.89 | brf green cap |
| 15 | 29785.37 | 32606.95 | nail 60d |



| | | | |
|--|-----------------|---|--|
| | | Blue Lake Addition-Phase 3A | |
| | | COORDINATES | |
| Baughman Company, P.A. 315 Ellis St. Wichita, KS 67211 P 316-262-7271 F 316-262-0149 | | ENGINEERING SURVEYING PLANNING LANDSCAPE ARCHITECTURE | |
| PROJECT NUMBER 448-89990 | DESIGN DMV | DRAWN DJL | |
| REVISIONS: | APPROVED | DATE 4/16 | |
| | SCALE Noted | | |
| | 13 OF 14 | | |