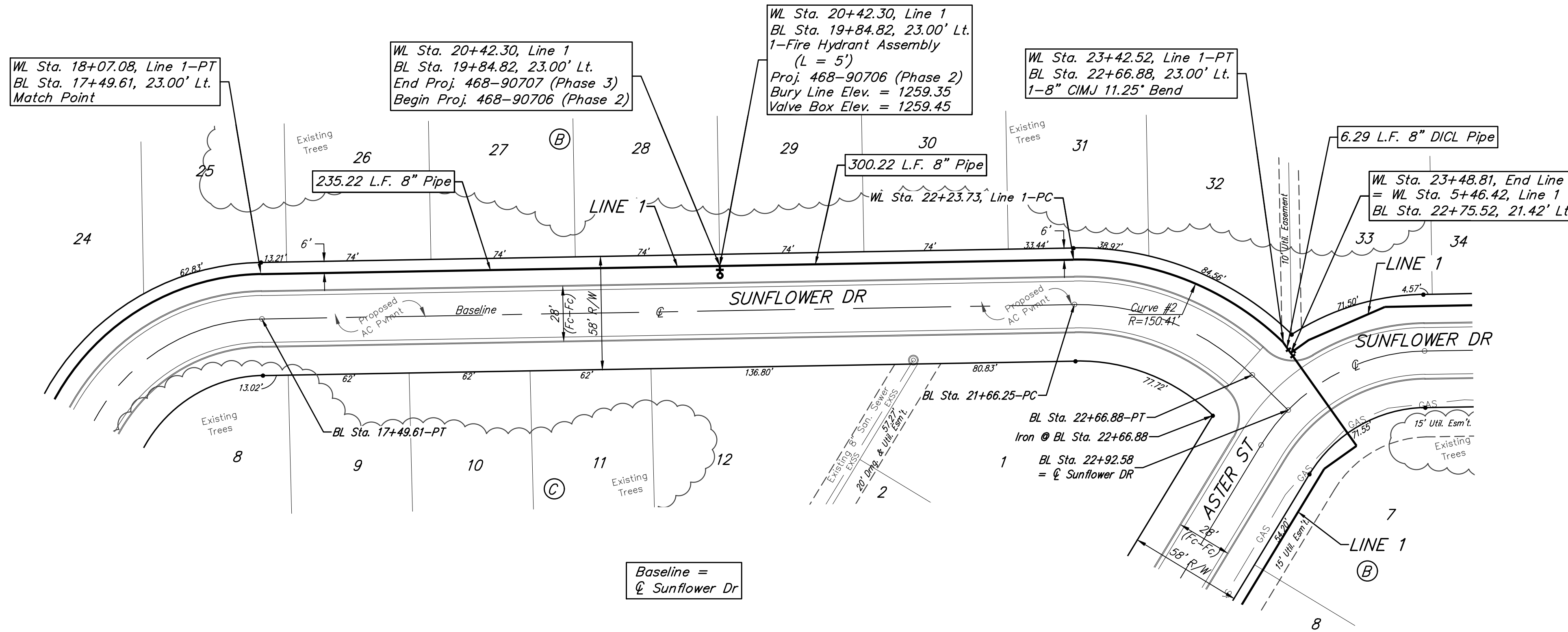


**BENCHMARKS:**  
 Chiseled square on top of catch basin, 43.5' N. & 20.4' W. of the northwest corner of Lot 24, Block B, Vassar Addition.  
 Elev. = 1259.55 NGVD29

Chiseled cross on top of catch basin, 48.2' N. & 41.2' W. of the northeast corner of Lot 37, Block B, Vassar Addition.  
 Elev. = 1258.46 NGVD29

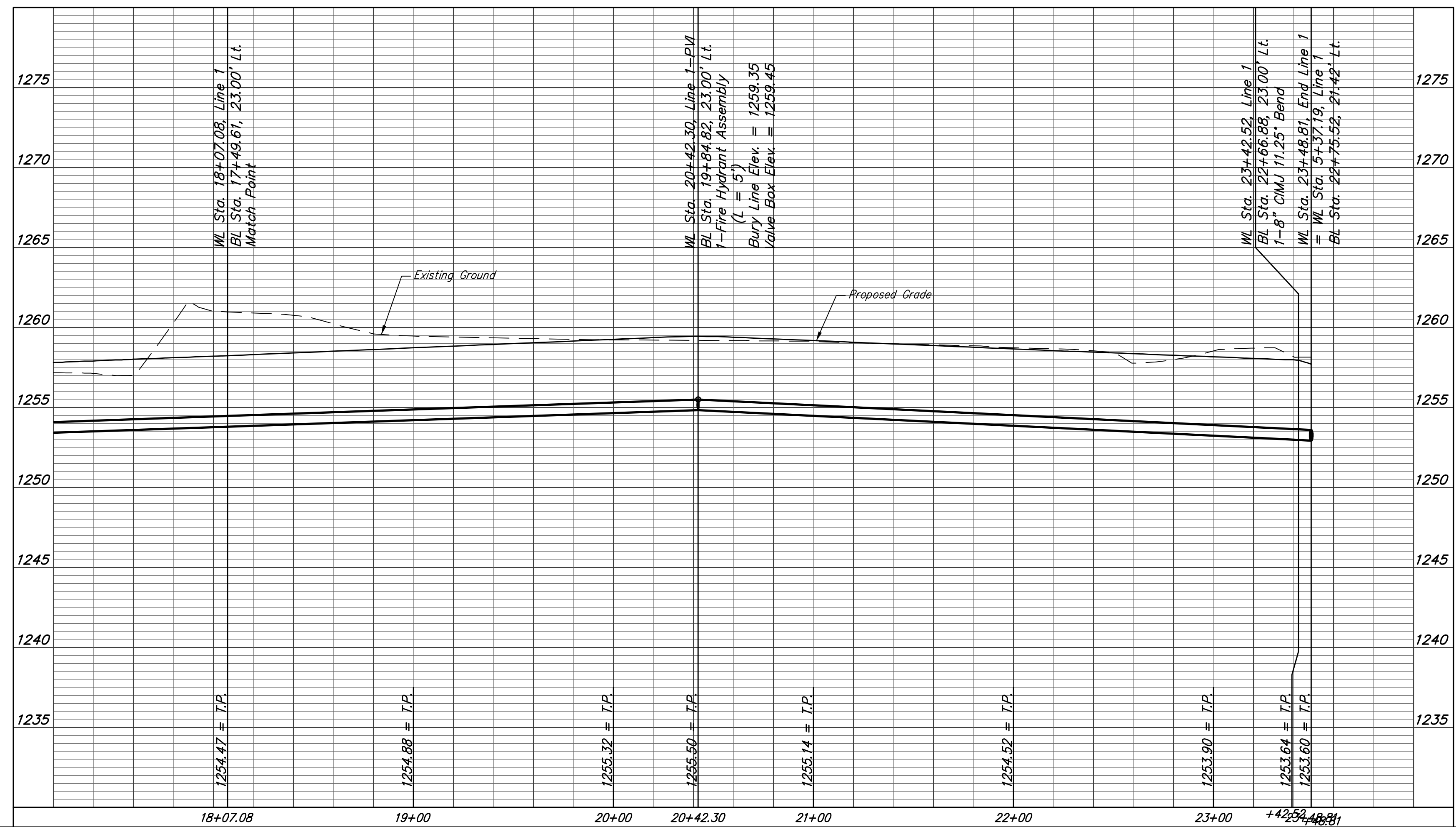
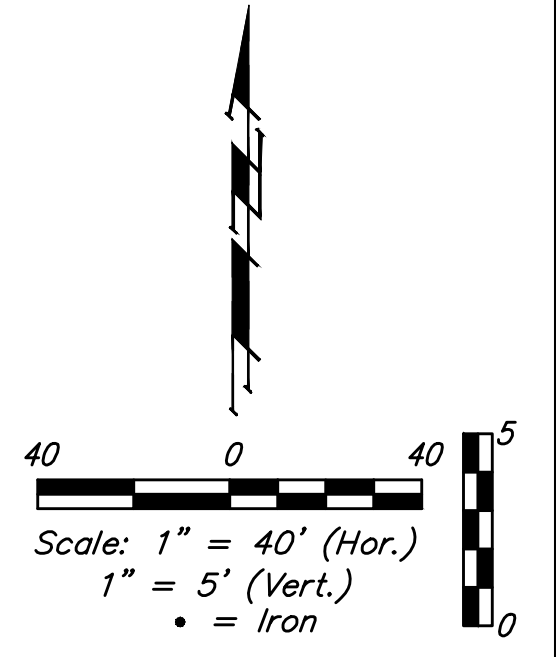
Chiseled cross on walk, most easterly corner, (block corner), Lot 4, Block D, Clifton Cove Addition, 35.2' W. & 8.5' S. of the northwest corner, Lot 20, Block B, Vassar Addition.  
 Elev. = 1258.62 NGVD29

FIRE HYDRANTS REQUIRED				
STATION	BURY LINE ELEVATION	TOP OF PIPE ELEVATION	FIRE HYDRANT BURY REQUIRED*	VALVE STEM EXT. REQUIRED (ft)*
20+42.30	1259.35	1255.50	4.50	-



Curve #2  
 Curve Data Based on Centerline of Pipe  
 Rad. = 150.41' Delta = 45°14'58" Tangent = 62.69'  
 Arc = 118.79' L.C. = 115.72' Def./ft. = 11.42759 Min.

Station	Arc	Chord	Defl.	Total Defl.
22+23.73	-	-	0°00'00"	0°00'00"
22+25.00	1.27'	1.34'	0°14'31"	0°14'31"
22+50.00	25.00'	26.30'	4°45'41"	5°00'12"
22+75.00	25.00'	26.30'	4°45'42"	9°45'54"
23+00.00	25.00'	26.30'	4°45'41"	14°31'35"
23+25.00	25.00'	26.30'	4°45'41"	19°17'16"
23+42.52	17.52'	18.44'	3°20'13"	22°37'29"



		Vassar Addition <b>LINE 1</b> Water Distribution System	
		Baughman Company, P.A. 315 Ellis St. Wichita, KS 67211 P 316-262-7271 F 316-262-0149 ENGINEERING   SURVEYING   PLANNING   LANDSCAPE ARCHITECTURE	
PROJECT NUMBER	DESIGN AEG	DRAWN JAK	APPROVED DATE 5/23/16
REVISIONS:	SCALE Noted SHEET		
		<b>7 OF 16</b>	