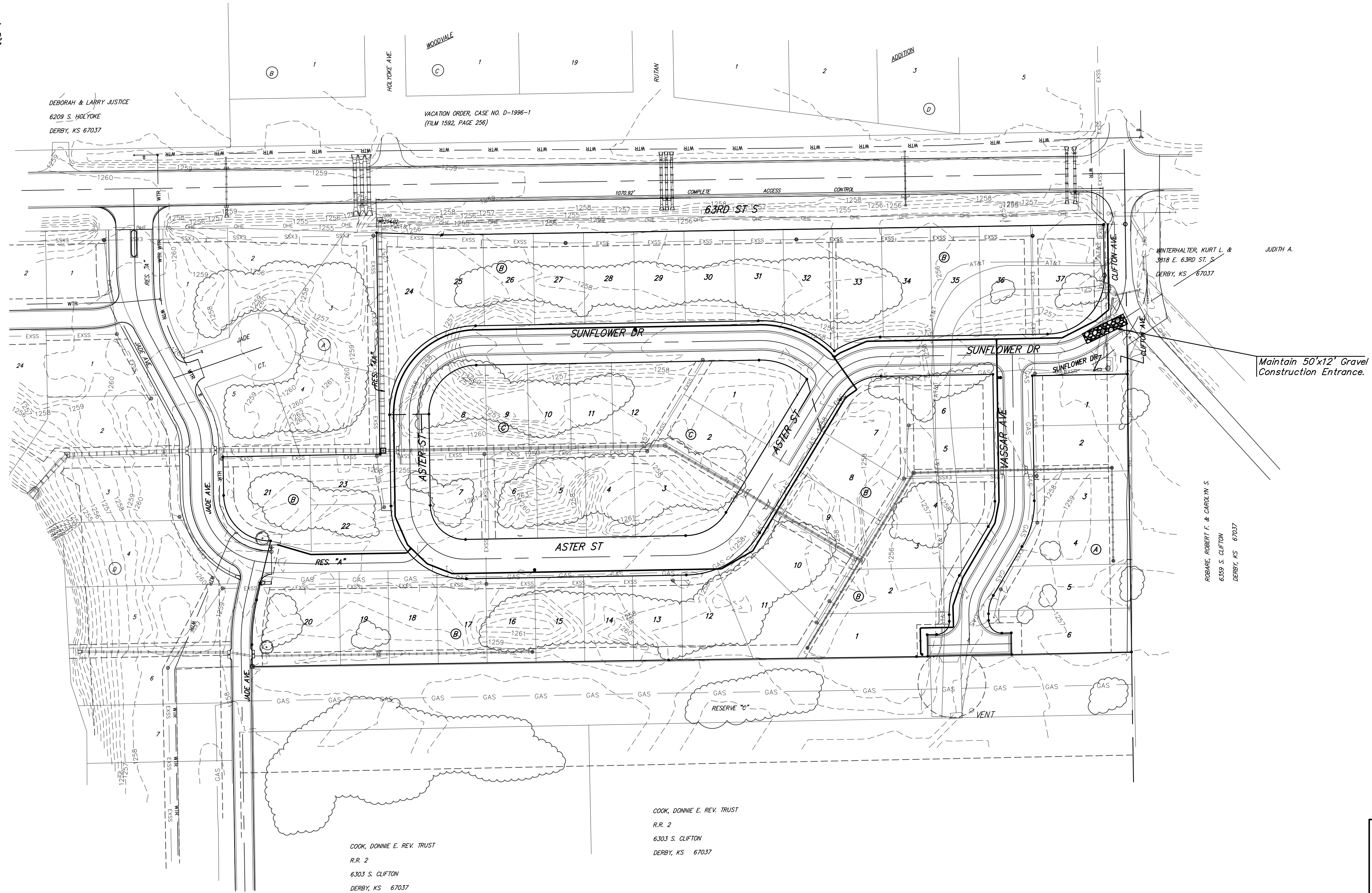
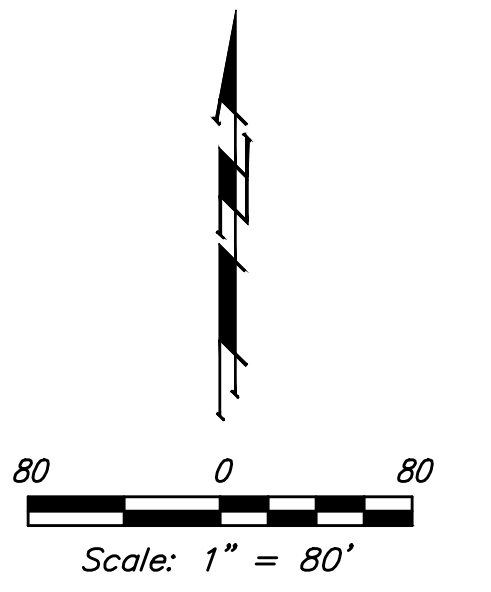


**BENCHMARKS:**  
 Chiseled square on top of catch basin, 43.5' N. & 20.4' W. of the northwest corner of Lot 24, Block B, Vassar Addition.  
 Elev. = 1259.55 NGVD29

Chiseled cross on top of catch basin, 48.2' N. & 41.2' W. of the northeast corner of Lot 37, Block B, Vassar Addition.  
 Elev. = 1258.46 NGVD29

Chiseled cross on walk, most easterly corner, (block corner), Lot 4, Block D, Clifton Cove Addition, 35.2' W. & 8.5' S. of the northwest corner, Lot 20, Block B, Vassar Addition.  
 Elev. = 1258.62 NGVD29



Maintain 50'x12' Gravel Construction Entrance.

COOK, DONNIE E. REV. TRUST  
 R.R. 2  
 6303 S. CLIFTON  
 DERBY, KS 67037

COOK, DONNIE E. REV. TRUST  
 R.R. 2  
 6303 S. CLIFTON  
 DERBY, KS 67037

ROBAHE, ROBERT F. & CAROLYN S.  
 6359 S. CLIFTON  
 DERBY, KS 67037



		<b>Vassar Addition</b> <b>EROSION CONTROL</b> Water Distribution System	
		<small>Baughman Company, P.A. 315 Ellis St. Wichita, KS 67211 P 316-262-7271 F 316-262-0149          ENGINEERING   SURVEYING   PLANNING   LANDSCAPE ARCHITECTURE</small>	
PROJECT NUMBER	DESIGN	DRAWN	
	AEG	JAK	
REVISIONS:	APPROVED	DATE	
		5/23/16	
	SCALE	Noted	
	SHEET	9 OF 16	