

COUNTRY ACRES
SECOND ADDITION
Block 43

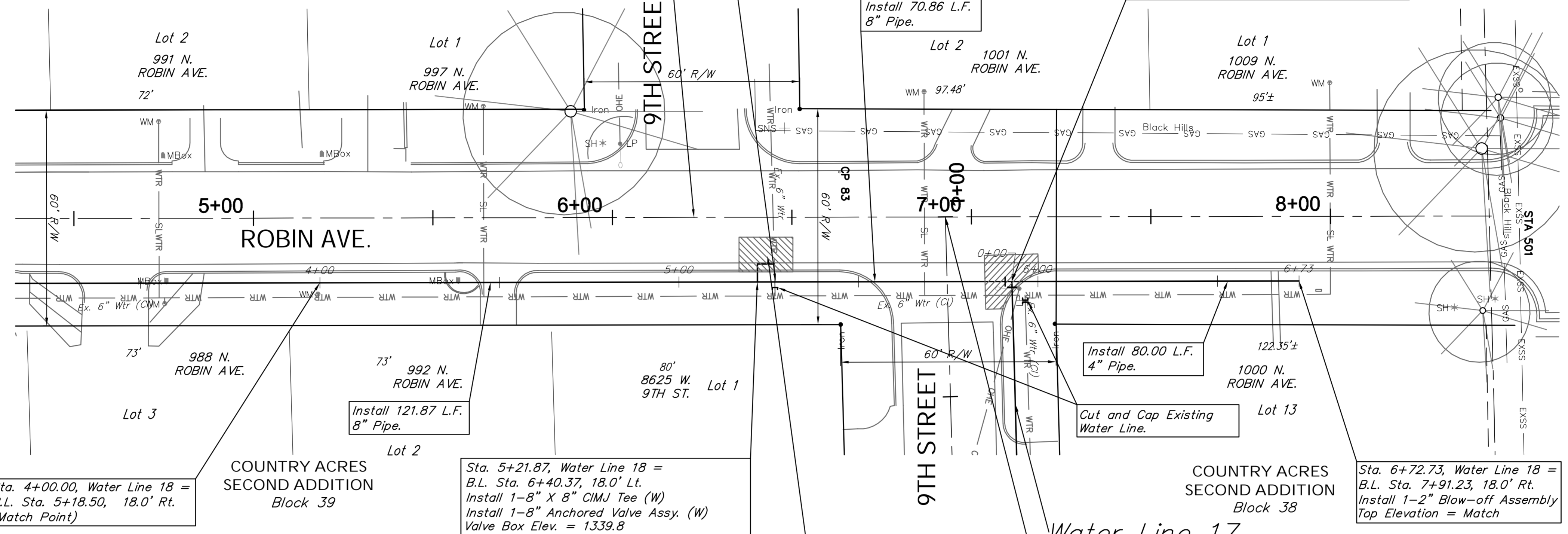
Water Line 18 B.L. Sta. 6+22.75 =
Intersection of Robin and 9th St.

CAUTION!
Existing
Water
Crossing

COUNTRY ACRES
SECOND ADDITION
Block 44

Sta. 5+92.73, Water Line 18 =
Sta. 0+00.00, Water Line 17
B.L. Sta. 7+11.23, 18.0' Rt.
Install 1-8" X 8" CIMJ Tee (E)
Install 1-8" Anchored Valve Assy. (E)
Install 1-8" X 4" CIMJ Reducer (N)
Valve Box Elev. = 1339.8

SCALE:
HORIZONTAL: 1" = 20'
VERTICAL: 1" = 5'



Sta. 4+00.00, Water Line 18 =
B.L. Sta. 5+18.50, 18.0' Rt.
(Match Point)

COUNTRY ACRES
SECOND ADDITION
Block 39

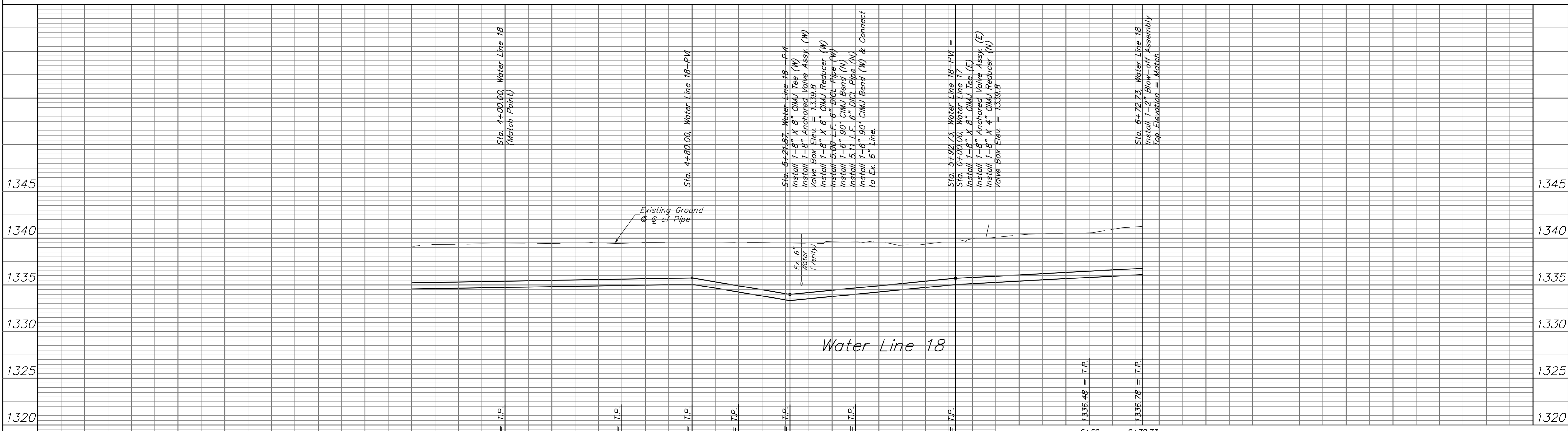
Sta. 5+21.87, Water Line 18 =
B.L. Sta. 6+40.37, 18.0' Lt.
Install 1-8" X 8" CIMJ Tee (W)
Install 1-8" Anchored Valve Assy. (W)
Valve Box Elev. = 1339.8
Install 1-8" X 6" CIMJ Reducer (W)
Install 5.00 L.F. 6" DICL Pipe (W)
Install 1-6" 90° CIMJ Bend (N)
Install 5.11 L.F. 6" DICL Pipe (N)
Install 1-6" 90° CIMJ Bend (W) & Connect
to Ex. 6" Line.

Remove and Replace 16.1 S.Y.
of Pavement, per Note 25 of
Sheet 4, as Necessary for
Construction.

Water Line 17
Water Line 18 B.L. Sta. 6+92.75 =
Intersection of Robin and 9th St.

Sta. 6+72.73, Water Line 18 =
B.L. Sta. 7+91.23, 18.0' Rt.
Install 1-2" Blow-off Assembly
Top Elevation = Match

Location of Existing Line is Based on Record
Information from the City. The Contractor Shall
Excavate the Ex. Water and to Verify Size and
Location PRIOR to Beginning Construction. This
Work Shall be Considered SUBSIDIARY to the
Water Line Installation.



Drawing File: E:\Projects\Country Acres WMR\Civil 3d\Country Acres WMR Basemap.dwg (Robin 02)
Design: MWS
Drawn: STAFF
Approved: TPV
Scale: NOTED
Project No. 1309E968 CAPITAL IMPROVEMENT PROJECT
ROBIN WATER PLAN/PROFILE
Water Line 18 - Sta. 4+00.00 to Sta. 6+72.73
COUNTRY ACRES WATER MAIN REPLACEMENT PROJECT - PHASE 1b

Baughman Company, P.A.
315 Ellis St., Wichita, KS 67211 P 316-262-7271 F 316-262-0149
ENGINEERING | SURVEYING | PLANNING | LANDSCAPE ARCHITECTURE

January 2016
SHEET
14
OF
67